

## HOOTY QUEEN — SEA RAY



**Builder:** SEA RAY

**Year Built:** 2007

**Model:** Cruiser

**Price:** PRICE ON APPLICATION

**Location:** United States

**LOA:** 48' 0" (14.63m)

**Beam:** 14' 9" (4.47m)

**Min Draft:** 4' 0" (1.22m)

**Max Draft:** 4' 0" (1.22m)

Our experienced yacht broker, Andrey Shestakov, will help you choose and buy a yacht that best suits your needs **Hooty Queen — SEA RAY** from our catalogue. Presently, at Shestakov Yacht Sales Inc., we have a wide variety of yachts available on our sale's list. We also work in close contact with all the big yacht manufacturers from all over the world.

If you would like to buy a yacht **Hooty Queen — SEA RAY** or would like help answering any questions concerning purchasing, selling or chartering a yacht, please call **+1(954)274-4435**

---

# TABLE OF CONTENTS

---

TABLE OF CONTENTS	2
SPECIFICATIONS	3
Overview	3
Basic Information	3
Dimensions	3
Speed, Capacities and Weight	3
Accommodations	4
Hull and Deck Information	4
Engine Information	4
DETAILED INFORMATION	5
Accommodations / Full Specs / Key Features	5
Exclusions	13
Disclaimer	14
PHOTOS	15
CONTACTS	22
Contact details	22
Telephones	22
Office hours	22
Address	22

---

# SPECIFICATIONS

---

## Overview

---

**2007 48' Sea Ray Sundancer -- Bristol Condition -- Fresh Water Kept for Most of her Life!**

**Loaded with all the Right Options: Twin Raymarine E120's, Upgraded M5 Satellite TV System, Bow Thruster, Underwater Lights, Teak Helm Area + Much More!!**

*Owner Says Sell, Won't Last at This Price! -- You won't find a Nicer 2007 48' Sundancer on the market today, call for a Showing!*

## Basic Information

---

**Category:** Cruiser

**Sub Category:** Express

**Model Year:** 2007

**Year Built:** 2007

**Country:** United States

**Cockpit:** Yes

## Dimensions

---

**LOA:** 48' 0" (14.63m)

**Beam:** 14' 9" (4.47m)

**Min Draft:** 4' 0" (1.22m)

**Max Draft:** 4' 0" (1.22m)

## Speed, Capacities and Weight

---

**Displacement:** 34250 Pounds

**Water Capacity:** 110 Gallons

**Holding Tank:** 60 Gallons

**Fuel Capacity:** 400 Gallons

---

## Accommodations

---

**Total Cabins:** 2

**Total Heads:** 2

---

## Hull and Deck Information

---

**Hull Material:** Fiberglass

**Hull Color:** White

---

## Engine Information

---

**Engines:** 2

**Manufacturer:** Cummins

**Model:** QSC-540

**Engine Type:** Inboard

**Fuel Type:** Diesel

---

# DETAILED INFORMATION

---

## Accommodations / Full Specs / Key Features

---

### Key Features & Upgrades / Build Sheet

Twin Raymarine E120 Radar / GPS / Navigation Systems

Raymarine Autopilot

Upgraded M5 High Definition Satellite TV System

Teak Flooring in Helm Area

Bow Thruster

Underwater Lighting - Transom

26' HD LCD TV / DVD - Salon

HD LCD TV / DVD - VIP Stateroom

Bose LS48 Surround Sound - Master Stateroom & Salon

Wood Galley Flooring

Washer / Dryer Combo

Spotlight, ACR

Rod Holders

Cockpit Refrigerator

White Hull Gel Coat

Black Canvas

Int D - Voyage - Bronze / Navy

D - Salon - Dist Lasso, Dinette - Pecan

Candleglow (Dark) Counter Tops

Light Cherry Wood (Hi-Gloss)

Dash Cover - Canvas

Macerator w/ Sealcock Interlock System

Sun Pad Forward Deck

Vacuum System

Windlass, All-Chain

Yacht Flag & Flag Pole

## **Hull & Deck Features**

Bottom Paint

Bow Rail, 316 Stainless Steel w/Welded Stanchions, Intermediate Rails & Life Lines

Canvas - Black

Cleats, Custom Sea Ray<sup>®</sup> ThruBolted - Stainless Steel (8) Color Schemes (Blue, Green, Black/Silver)

Deck Fill Plates, Stainless Steel Deck Rails, 316 Stainless Steel Gel Coat, Arctic White

Graphics, Striping

Handrails, 316 Stainless Steel Hatch, Deck Vent - Translucent w/Locks & Sky Screen Covers - Trapezoidal - (20X20)

Hull Windows, Stainless Steel - Fixed

Lights, Navigation

Portlights, Stainless Steel

(3 Opening, 3 Fixed)

Resin, High-Performance Vinylester Rub Rail, PVC w/Stainless-Steel Insert Skylight, Flush Mount w/Retractable Sunshade - Salon

Storage, Transom Wall - (For Fenders & Gear)

Stringer System, Fiberglass Swim Platform, Integral/Extended w/Concealed Stainless-Steel

Three-Step Swim Ladder w/Integral Grab Handle

Thru-Hull Fittings, Stainless Steel Toe Rail, Molded Fiberglass - Deck Vent System, Engine Room -

Integral w/Stainless-Steel Accents Windshield, Tempered/Tinted Curved Glass w/Aluminum Frame, & Electric Front Vents

Windshield Washer System Windshield Wipers w/Intermittent Wiping

***Canvas (Sunbrella®):***

Aft Curtain

Canvas Storage Bag

***Windlass System:***

Anchor Chute, Stainless Steel Anchor, Galvanized

Anchor Rope/Chain Storage w/Hatches (2)

Anchor Washdown Spigot w/Hose

Windlass, Rope/Chain w/Foot Switches

***Certifications:***

Meets Applicable USCG & ABYC Standards

NMMA Certification

**Cockpit Features**

Beverage Holders (10)

Carpet Liner, Snap-In

Door, Sliding Cabin Entry - Framed Acrylic

Door, Transom

Floor Liner, Fiberglass - Self-Bailing Hardtop, Fiberglass w/Stainless-Steel Grab Rails & Overhead Lighting Hatch, Engine Service - Gas Assisted Hatches, Hardtop Vent - Translucent

w/Locks (2)

Icemaker, 120V

Lighting, Indirect

Outlet, 12V Accessory

Outlet, 120V GFI Protected

Seating, Port Helm L-Shape Bench w/Molded Fiberglass Base & EuroStyle Backrest

Seating - Pivoting Double Helm - Custom Euro-Style w/Flip-Up

Thigh-Rise Bolster, Armrests & Heavy-Duty Pedestal w/Slides, & Pneumatic Vertical Adjustment (Helm Only) Seating, U-Shaped - Aft w/Storage Below Ship's Bell Steps, Molded-Deck Access Stereo, Clarion® 12V AM/FM Single CD, Sirius® Satellite Receiver w/Antenna, 6-Disc CD Changer, Amplifier, Subwoofer Speakers (4) & Digital Cockpit Remote Control Storage, Side Panel - Starboard Table, Cockpit - Fiberglass

Wet Bar w/Sink, Faucet, Stainless-Steel Handrail, Trash Receptacle & Storage Cabinet - Port

## **Cabin Features**

Carbon Monoxide Monitor

Carpet, Deep-Pile BCF - 44-Ounce Carpet Runners, Interior (Sunbrella®) Handrails, Stainless Steel

Hardwood Cabinets & Trim, Handcrafted

Lighting, 12V Xenon

Lighting, 12V Indirect

Outlets, 120V GFI Protected

Outlet, Phone

Outlet & Switch Plates - Satin Nickel Finish

Pillows, Accent Storage, In-Floor Wood Interior Finish - Dark Cherry

## **Salon:**



Blinds, Wood

Entertainment Center, Aft

- Stereo, Clarion 12V AM/FM Single CD, Interfaced w/Sirius Satellite Receiver, 6-Disc CD Changer, Amplifier & Speakers (4) - Storage Cabinet - CD & Videotapes

- 26" TV, LCD Flatscreen,

w/Remote DVD Player, Coax

Outlet & Gain Control Panel Mirror, Wall Accent

Seating, L-Shaped Sofa w/Pull-Out Bed (Ultraleather HPTM)

Steps, Entryway w/Stainless-Steel Handrail - Cherry

Storage, Gunwale Cabinets

Table, Dinette (Movable) Hi-Lo

**Galley:**

Coffeemaker, 120V

Countertop, Solid-Surface w/Stainless-Steel Sink, Grohe® Faucet & Sink Cover

Microwave/Convection Oven - Stainless Steel 120V Outlet, 12V Accessory

Power Vent, 12V Refrigerator/Freezer, Upright w/Stainless-Steel Front Storage, Drawers w/Cutlery Insert Storage, Upper & Lower

w/Designated Plate & Glass Storage Stove, 240V Two-Burner w/Stainless-Steel Safety Rail  
Trash Receptacle w/Chute & Solid-Surface Cover

**Master Stateroom:**

Berth, Full-Size w/Innerspring Mattress, Pillows, Sheets &

Coordinated Spread w/Drawer Storage Below

Door, Privacy w/Mirror

Flooring, Wood

Hanging Locker - Port w/Light & Shelves

Hanging Locker - Starboard w/Light & Shelves

Mirrored Rope Locker - Bulkhead Storage, Gunwale Shelves Storage, In-Floor

---

TV, 15" Flatscreen LCD 120V/DVD Combo w/Coax Outlet

***Forward Head - Port:***

Door, Privacy - Access from Forward Stateroom

Handrails, Stainless Steel

Head, VacuFlush®

Power Vent, 12V w/Stainless-Steel Grill Storage, Gunwale Cabinet

Storage, Medicine Cabinet - Mirrored Vanity w/Solid-Surface Countertop, Sink, Grohe Faucet, & Storage Below

***Forward Shower - Starboard:***

Clothes Hook

Curtain, Shower

Door, Privacy - Access from Forward Stateroom

Handrails, Stainless Steel

Shower w/Seat & Adjustable Shower Wand (Grohe®)

***Mid-Stateroom:***

Bed, Twin (2) Mattresses, Pillows, Sheets, & Coordinated Spread w/ Slide System to Convert into Queen-Size Bed

Door, Privacy

Hanging Locker - Forward

Portlight, Stainless Steel

Storage, Cabinets - Starboard

***Mid-Stateroom Head/Shower:***

Clothes Hook

Curtain, Shower

Door, Privacy - Access from Mid-Stateroom

Handrail, Stainless Steel

Head, VacuFlush

Storage, Medicine Cabinet - Mirrored Shower w/Seat & Adjustable Shower Wand (Grohe)

Vanity w/Solid-Surface Countertop, Sink, Faucet, & Storage Below

## Technical Features

### ***Control Station:***

Alarms, Engine - Oil, Water & Transmission Oil

Alarms, High-Water - Bilge

Compass

Emergency Start System - Engines Gel-Coated Dash - Nickel

Horn, Air - Single Trumpet Instrument Panel - Linear Flux Power Steering, Hydraulic, Tilt Wheel, Wood Accent

Shift & Throttle Controls w/Gold Knobs SmartCraft™ Diagnostics:

- Instrumentation, Custom

Sea Ray® SmartCraft 4-in-1 Multigauges (2), w/Low-Glare Blue Night Lighting & Chrome Bezels (Includes: Fuel Level, Oil Pressure, Tachometer (2), Voltmeter, & Water Temperature)

SmartCraft System View (Includes: Air & Water Temperature,

Combined Fuel Flow/Range, Depth, Engine Alarms/Hour Meters, Engine Synchronizer, GPS Interface & Raymarine 125 GPS Antenna, System Maintenance Records)

Switch Panel, Backlit - Gray Burl Switches, Illuminated Weatherproof Rockers & Dimmer Control

### ***Electronics:***

Electronics Circuit, 50 Amp/12V VHF Radio w/Remote Speaker & 8' Fiberglass Antenna

### ***Electrical Systems:***

Batteries, 8-D w/Boxes (2)

Battery Charger/Converter, 120V/50 Amp/12V

Battery Charger Overcurrent Protection

Inlet, TV Coax & Telephone w/Cords Panel, DC Main Breaker

Panel, Main Distribution - AC

Panel, Main Distribution - DC Panel, Remote Circuit Breaker

Shore Power, Cablemaster (Glendinning) 240V/50 Amp w/75' Cord & Wireless Remote  
(Cablemaster Not Available w/220V/50 Cycle Shore Power)

Transformer, Shore Power Isolation - 240V/50 Amp

Wiring, Color-Coded w/Chafe Protection

**Generator:**

9.0 kW Onan – Diesel, 120/240V/60 Cycle, w/Remote Start, Muffler, Closed Cooling, Fuel Filter,

Seacock & Seawater Strainer (Generator manufacturer and size may vary due to product availability)

**Air Conditioning/Heating:** Zone-Controlled Reverse-Cycle System (30,000 BTU)

Custom Integral Vent System

**Engine Room:**

Bilge Pumps, 12V Automatic (2) Bilge Pump, 12V Automatic High-Water (1 Bilge)

Blowers, 12V Bilge (2)

Exhaust, Underwater - Patented

Fire Suppression System - Automatic w/Manual Pull

Gel-Coated Engine Room, Oyster Insulation, Engine Room - 2" w/Loaded Vinyl Barrier

Ladder, Stainless Steel - Removable Lighting, 12V

Oil Changer System - Engines, Transmissions & Generator Synchronizer, Engines

**Fuel System:**

Crossover Fuel System -

Generator Only

Fuel Filters (3) Racor®

(2) 75-900 MAX for Engines (1) 500 MA for Generator

Fuel Lines, USCG - Type A-1 Fuel Tanks, Aluminum w/Electric Sending Units (2)

***Water System:***

Freshwater Washdown Spigot - Engine Room

Freshwater Washdown Spigot - Transom

Freshwater Washdown Spigot - Anchor Pressure Water System w/12V Pump Shower, Cockpit - Hot & Cold

Water Heater, 240V (11-Gallon) Water Inlet, Dockside

***Waste System:***

Head System, VacuFlush®

Holding Tank Level Indicators - MDP & Heads

Holding Tank w/Dockside Pump-Out, & Automatic Cutoff (60-Gallon) Sump Box w/Pumps - Automatic

***Underwater Gear:***

Bonding System w/Zinc Hull Plate Propeller Shafts, 2" Stainless Steel (2) - Aquamet 22

Propellers, Nibral 4-Blade Cup Rudders, Manganese-Bronze w/Stainless-Steel Posts

Seacocks on all Underwater Fittings Seawater Strainers

Shaft, Logs, Dripless w/Extra Seal Carrier Kit

Struts, Manganese-Bronze

Trim Tabs, Hydraulic

---

## **Exclusions**

Owner's personal belongings.

---

## Disclaimer

---

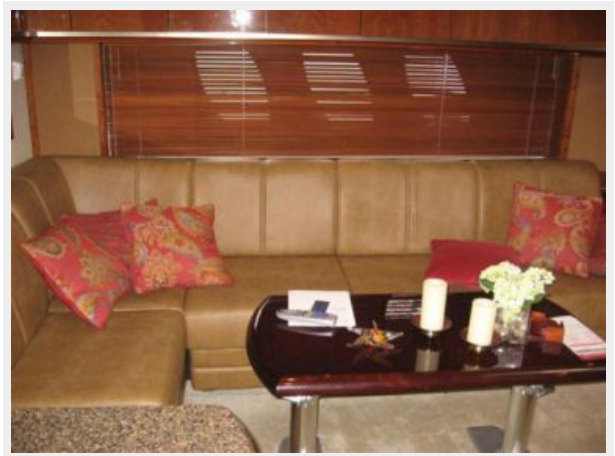
The Company offers the details of this vessel or yacht in good faith but cannot guarantee or warrant the accuracy of this information nor warrant the condition of the vessel. A buyer should instruct his representatives, agents, or his surveyors, to investigate such details as the buyer desires validated. This vessel or yacht is offered subject to prior sale, price change, or withdrawal without notice.

# PHOTOS



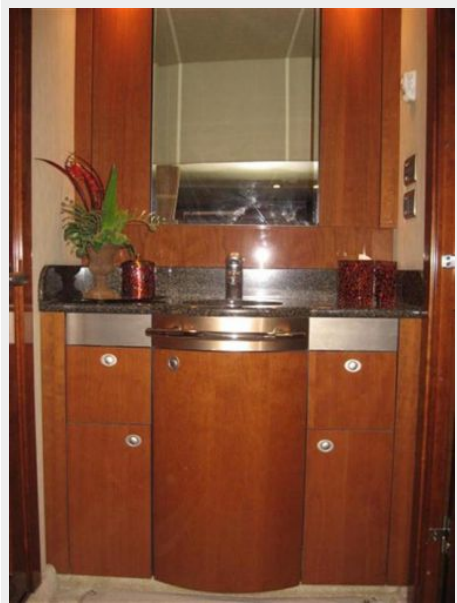
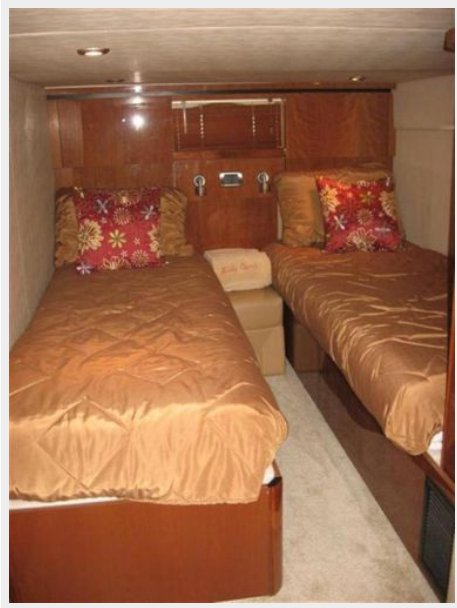














# CONTACTS

---

Andrey Shestakov, leading yacht broker of the sales department of Shestakov Yacht Sales Inc. Shestakov Yacht Sales Inc., the official representative of the Miami/Fort Lauderdale FL headquarters.

## Contact details

---

Email: [andrey@shestakovyachtsales.com](mailto:andrey@shestakovyachtsales.com)

Web: [shestakovyachtsales.com/en/](http://shestakovyachtsales.com/en/)

## Telephones

---

USA: +1(954)274-4435

## Office hours

---

Monday – Saturday: **9:00 - 21:00** EDT

Sunday: **closed**

## Address

---



Harbour Towne Marina, 850 NE 3rd St,  
STE 213, Dania, FL 33004