

## HOOTY QUEEN — SEA RAY



**Судостроитель:** SEA RAY

**Год постройки:** 2007

**Модель:** Крейсер

**Цена:** **ЦЕНА ЯХТЫ ПО ЗАПРОСУ**

**Местонахождение:** United States

**Длина общая:** 48' 0" (14.63m)

**Ширина:** 14' 9" (4.47m)

**Мин. осадка:** 4' 0" (1.22m)

**Макс. осадка:** 4' 0" (1.22m)

Купить **Hooty Queen — SEA RAY** а также выбрать подходящую вам яхту из нашего каталога яхт вам поможет опытный яхтенный брокер Андрей Шестаков. На сегодняшний день компания **Shestakov Yacht Sales Inc.** имеет большое количество яхт в собственном списке продаж, а также тесно сотрудничает со всеми крупными яхтенными производителями по всему миру.

Для того чтобы купить яхту **Hooty Queen — SEA RAY** а также проконсультироваться по любому вопросу связанному с покупкой, продажей, чартером яхт позвоните по телефону **+7(918)465-66-44**.

# ОГЛАВЛЕНИЕ

---

ОГЛАВЛЕНИЕ	2
ХАРАКТЕРИСТИКИ	3
Обзор	3
Основная информация	3
Размеры	3
Скорость, вместимость и масса	3
Размещение	4
Корпус и палуба	4
Информация о двигателе	4
ПОДРОБНОЕ ОПИСАНИЕ	5
Accommodations / Full Specs / Key Features	5
Исключения	13
Отказ от ответственности	14
ФОТОГРАФИИ	15
КОНТАКТЫ	22
Контактная информация	22
Телефоны	22
Время работы	22
Адрес	22

# ХАРАКТЕРИСТИКИ

## Обзор

**2007 48' Sea Ray Sundancer -- Bristol Condition -- Fresh Water Kept for Most of her Life!**

**Loaded with all the Right Options: Twin Raymarine E120's, Upgraded M5 Satellite TV System, Bow Thruster, Underwater Lights, Teak Helm Area + Much More!!**

*Owner Says Sell, Won't Last at This Price! -- You won't find a Nicer 2007 48' Sundancer on the market today, call for a Showing!*

## Основная информация

**Тип судна:** Крейсер

**Подкатегория:** Express

**Модельный год:** 2007

**Год постройки:** 2007

**Страна:** United States

**Кубрик:** Да

## Размеры

**Длина общая:** 48' 0" (14.63m)

**Ширина:** 14' 9" (4.47m)

**Мин. осадка:** 4' 0" (1.22m)

**Макс. осадка:** 4' 0" (1.22m)

## Скорость, вместимость и масса

**Водоизмещение:** 34250 Pounds

**Вместимость воды:** 110 Gallons

**Вместимость сточного бака:** 60 Gallons

**Объем топливного бака:** 400 Gallons

## Размещение

---

Всего кают: 2

Всего ком. состава: 2

## Корпус и палуба

---

Материал корпуса: Fiberglass

Цвет корпуса: White

## Информация о двигателе

---

Двигатели: 2

Производитель: Cummins

Модель: QSC-540

Тип двигателя: Inboard

Тип топлива: Diesel

---

# ПОДРОБНОЕ ОПИСАНИЕ

---

## Accommodations / Full Specs / Key Features

---

### Key Features & Upgrades / Build Sheet

Twin Raymarine E120 Radar / GPS / Navigation Systems

Raymarine Autopilot

Upgraded M5 High Definition Satellite TV System

Teak Flooring in Helm Area

Bow Thruster

Underwater Lighting - Transom

26' HD LCD TV / DVD - Salon

HD LCD TV / DVD - VIP Stateroom

Bose LS48 Surround Sound - Master Stateroom & Salon

Wood Galley Flooring

Washer / Dryer Combo

Spotlight, ACR

Rod Holders

Cockpit Refrigerator

White Hull Gel Coat

Black Canvas

Int D - Voyage - Bronze / Navy

D - Salon - Dist Lasso, Dinette - Pecan

Candleglow (Dark) Counter Tops

Light Cherry Wood (Hi-Gloss)

Dash Cover - Canvas

Macerator w/ Sealcock Interlock System

Sun Pad Forward Deck

Vacuum System

Windlass, All-Chain

Yacht Flag & Flag Pole

## **Hull & Deck Features**

Bottom Paint

Bow Rail, 316 Stainless Steel w/Welded Stanchions, Intermediate Rails & Life Lines

Canvas - Black

Cleats, Custom Sea Ray® ThruBolted - Stainless Steel (8) Color Schemes (Blue, Green, Black/Silver)

Deck Fill Plates, Stainless Steel Deck Rails, 316 Stainless Steel Gel Coat, Arctic White

Graphics, Striping

Handrails, 316 Stainless Steel Hatch, Deck Vent - Translucent w/Locks & Sky Screen Covers - Trapezoidal - (20X20)

Hull Windows, Stainless Steel - Fixed

Lights, Navigation

Portlights, Stainless Steel

(3 Opening, 3 Fixed)

Resin, High-Performance Vinylester Rub Rail, PVC w/Stainless-Steel Insert Skylight, Flush Mount w/Retractable Sunshade - Salon

Storage, Transom Wall - (For Fenders & Gear)

Stringer System, Fiberglass Swim Platform, Integral/Extended w/Concealed Stainless-Steel

Three-Step Swim Ladder w/Integral Grab Handle

Thru-Hull Fittings, Stainless Steel Toe Rail, Molded Fiberglass - Deck Vent System, Engine Room -

Integral w/Stainless-Steel Accents Windshield, Tempered/Tinted Curved Glass w/Aluminum Frame, & Electric Front Vents

Windshield Washer System Windshield Wipers w/Intermittent Wiping

***Canvas (Sunbrella®):***

Aft Curtain

Canvas Storage Bag

***Windlass System:***

Anchor Chute, Stainless Steel Anchor, Galvanized

Anchor Rope/Chain Storage w/Hatches (2)

Anchor Washdown Spigot w/Hose

Windlass, Rope/Chain w/Foot Switches

***Certifications:***

Meets Applicable USCG & ABYC Standards

NMMA Certification

**Cockpit Features**

Beverage Holders (10)

Carpet Liner, Snap-In

Door, Sliding Cabin Entry - Framed Acrylic

Door, Transom

Floor Liner, Fiberglass - Self-Bailing Hardtop, Fiberglass w/Stainless-Steel Grab Rails & Overhead Lighting Hatch, Engine Service - Gas Assisted Hatches, Hardtop Vent - Translucent

w/Locks (2)

Icemaker, 120V

Lighting, Indirect

Outlet, 12V Accessory

Outlet, 120V GFI Protected

Seating, Port Helm L-Shape Bench w/Molded Fiberglass Base & EuroStyle Backrest

Seating - Pivoting Double Helm - Custom Euro-Style w/Flip-Up

Thigh-Rise Bolster, Armrests & Heavy-Duty Pedestal w/Slides, & Pneumatic Vertical Adjustment (Helm Only) Seating, U-Shaped - Aft w/Storage Below Ship's Bell Steps, Molded-Deck Access Stereo, Clarion® 12V AM/FM Single CD, Sirius® Satellite Receiver w/Antenna, 6-Disc CD Changer, Amplifier, Subwoofer Speakers (4) & Digital Cockpit Remote Control Storage, Side Panel - Starboard Table, Cockpit - Fiberglass

Wet Bar w/Sink, Faucet, Stainless-Steel Handrail, Trash Receptacle & Storage Cabinet - Port

## **Cabin Features**

Carbon Monoxide Monitor

Carpet, Deep-Pile BCF - 44-Ounce Carpet Runners, Interior (Sunbrella®) Handrails, Stainless Steel

Hardwood Cabinets & Trim, Handcrafted

Lighting, 12V Xenon

Lighting, 12V Indirect

Outlets, 120V GFI Protected

Outlet, Phone

Outlet & Switch Plates - Satin Nickel Finish

Pillows, Accent Storage, In-Floor Wood Interior Finish - Dark Cherry

## **Salon:**



Blinds, Wood

Entertainment Center, Aft

- Stereo, Clarion 12V AM/FM Single CD, Interfaced w/Sirius Satellite Receiver, 6-Disc CD Changer, Amplifier & Speakers (4) - Storage Cabinet - CD & Videotapes

- 26" TV, LCD Flatscreen,

w/Remote DVD Player, Coax

Outlet & Gain Control Panel Mirror, Wall Accent

Seating, L-Shaped Sofa w/Pull-Out Bed (Ultraleather HPTM)

Steps, Entryway w/Stainless-Steel Handrail - Cherry

Storage, Gunwale Cabinets

Table, Dinette (Movable) Hi-Lo

**Galley:**

Coffeemaker, 120V

Countertop, Solid-Surface w/Stainless-Steel Sink, Grohe® Faucet & Sink Cover

Microwave/Convection Oven - Stainless Steel 120V Outlet, 12V Accessory

Power Vent, 12V Refrigerator/Freezer, Upright w/Stainless-Steel Front Storage, Drawers w/Cutlery Insert Storage, Upper & Lower

w/Designated Plate & Glass Storage Stove, 240V Two-Burner w/Stainless-Steel Safety Rail Trash Receptacle w/Chute & Solid-Surface Cover

**Master Stateroom:**

Berth, Full-Size w/Innerspring Mattress, Pillows, Sheets &

Coordinated Spread w/Drawer Storage Below

Door, Privacy w/Mirror

Flooring, Wood

Hanging Locker - Port w/Light & Shelves

Hanging Locker - Starboard w/Light & Shelves

Mirrored Rope Locker - Bulkhead Storage, Gunwale Shelves Storage, In-Floor

---

TV, 15" Flatscreen LCD 120V/DVD Combo w/Coax Outlet

***Forward Head - Port:***

Door, Privacy - Access from Forward Stateroom

Handrails, Stainless Steel

Head, VacuFlush®

Power Vent, 12V w/Stainless-Steel Grill Storage, Gunwale Cabinet

Storage, Medicine Cabinet - Mirrored Vanity w/Solid-Surface Countertop, Sink, Grohe Faucet, & Storage Below

***Forward Shower - Starboard:***

Clothes Hook

Curtain, Shower

Door, Privacy - Access from Forward Stateroom

Handrails, Stainless Steel

Shower w/Seat & Adjustable Shower Wand (Grohe®)

***Mid-Stateroom:***

Bed, Twin (2) Mattresses, Pillows, Sheets, & Coordinated Spread w/ Slide System to Convert into Queen-Size Bed

Door, Privacy

Hanging Locker - Forward

Portlight, Stainless Steel

Storage, Cabinets - Starboard

***Mid-Stateroom Head/Shower:***

Clothes Hook

Curtain, Shower

Door, Privacy - Access from Mid-Stateroom

Handrail, Stainless Steel

Head, VacuFlush

Storage, Medicine Cabinet - Mirrored Shower w/Seat & Adjustable Shower Wand (Grohe)

Vanity w/Solid-Surface Countertop, Sink, Faucet, & Storage Below

## Technical Features

### **Control Station:**

Alarms, Engine - Oil, Water & Transmission Oil

Alarms, High-Water - Bilge

Compass

Emergency Start System - Engines Gel-Coated Dash - Nickel

Horn, Air - Single Trumpet Instrument Panel - Linear Flux Power Steering, Hydraulic, Tilt Wheel, Wood Accent

Shift & Throttle Controls w/Gold Knobs SmartCraft™ Diagnostics:

- Instrumentation, Custom

Sea Ray® SmartCraft 4-in-1 Multigauges (2), w/Low-Glare Blue Night Lighting & Chrome Bezels (Includes: Fuel Level, Oil Pressure, Tachometer (2), Voltmeter, & Water Temperature)

SmartCraft System View (Includes: Air & Water Temperature,

Combined Fuel Flow/Range, Depth, Engine Alarms/Hour Meters, Engine Synchronizer, GPS Interface & Raymarine 125 GPS Antenna, System Maintenance Records)

Switch Panel, Backlit - Gray Burl Switches, Illuminated Weatherproof Rockers & Dimmer Control

### **Electronics:**

Electronics Circuit, 50 Amp/12V VHF Radio w/Remote Speaker & 8' Fiberglass Antenna

### **Electrical Systems:**

Batteries, 8-D w/Boxes (2)

Battery Charger/Converter, 120V/50 Amp/12V

Battery Charger Overcurrent Protection

Inlet, TV Coax & Telephone w/Cords Panel, DC Main Breaker

Panel, Main Distribution - AC

Panel, Main Distribution - DC Panel, Remote Circuit Breaker

Shore Power, Cablemaster (Glendinning) 240V/50 Amp w/75' Cord & Wireless Remote  
(Cablemaster Not Available w/220V/50 Cycle Shore Power)

Transformer, Shore Power Isolation - 240V/50 Amp

Wiring, Color-Coded w/Chafe Protection

**Generator:**

9.0 kW Onan – Diesel, 120/240V/60 Cycle, w/Remote Start, Muffler, Closed Cooling, Fuel Filter,

Seacock & Seawater Strainer (Generator manufacturer and size may vary due to product availability)

**Air Conditioning/Heating:** Zone-Controlled Reverse-Cycle System (30,000 BTU)

Custom Integral Vent System

**Engine Room:**

Bilge Pumps, 12V Automatic (2) Bilge Pump, 12V Automatic High-Water (1 Bilge)

Blowers, 12V Bilge (2)

Exhaust, Underwater - Patented

Fire Suppression System - Automatic w/Manual Pull

Gel-Coated Engine Room, Oyster Insulation, Engine Room - 2" w/Loaded Vinyl Barrier

Ladder, Stainless Steel - Removable Lighting, 12V

Oil Changer System - Engines, Transmissions & Generator Synchronizer, Engines

**Fuel System:**

Crossover Fuel System -

Generator Only

Fuel Filters (3) Racor®

(2) 75-900 MAX for Engines (1) 500 MA for Generator

Fuel Lines, USCG - Type A-1 Fuel Tanks, Aluminum w/Electric Sending Units (2)

***Water System:***

Freshwater Washdown Spigot - Engine Room

Freshwater Washdown Spigot - Transom

Freshwater Washdown Spigot - Anchor Pressure Water System w/12V Pump Shower, Cockpit - Hot & Cold

Water Heater, 240V (11-Gallon) Water Inlet, Dockside

***Waste System:***

Head System, VacuFlush®

Holding Tank Level Indicators - MDP & Heads

Holding Tank w/Dockside Pump-Out, & Automatic Cutoff (60-Gallon) Sump Box w/Pumps - Automatic

***Underwater Gear:***

Bonding System w/Zinc Hull Plate Propeller Shafts, 2" Stainless Steel (2) - Aquamet 22

Propellers, Nibral 4-Blade Cup Rudders, Manganese-Bronze w/Stainless-Steel Posts

Seacocks on all Underwater Fittings Seawater Strainers

Shaft, Logs, Dripless w/Extra Seal Carrier Kit

Struts, Manganese-Bronze

Trim Tabs, Hydraulic

---

## **Исключения**

При продаже яхты исключаются личные вещи владельца.

## Отказ от ответственности

---

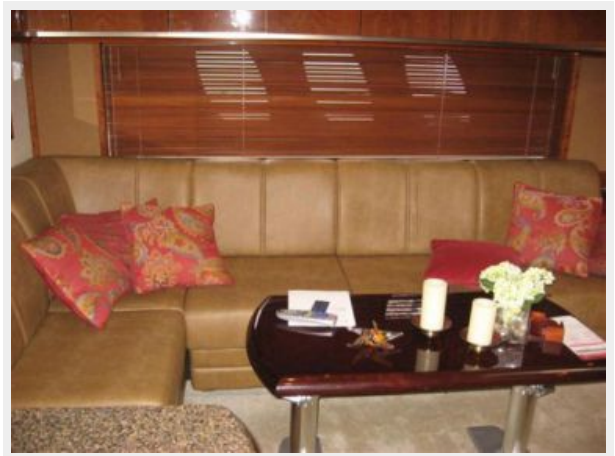
Компания предоставляет описание судна или яхты добросовестно, но не может гарантировать точность этой информации, а также не ручается за техническое состояние. Покупатель должен проинструктировать своих агентов или оценщиков исследовать представленную информацию более подробно, по собственному желанию. Продажа судна или яхты, изменение цены или снятие с продажи будет происходить без предварительного уведомления.

# ФОТОГРАФИИ



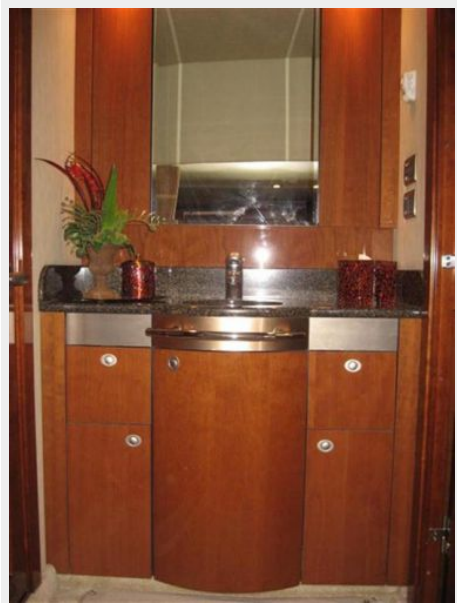
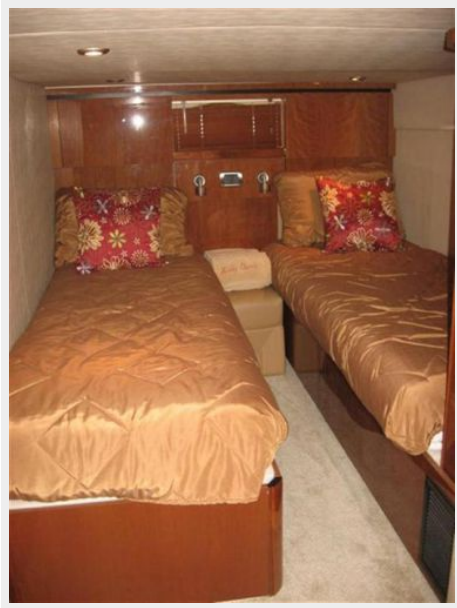














# КОНТАКТЫ

---

Андрей Шестаков (Andrey Shestakov) – ведущий яхтенный брокер отдела продаж яхт и судов компании Shestakov Yacht Sales Inc. Официальный представитель Shestakov Yacht Sales Inc. для русскоговорящих клиентов в центральном офисе компании в Майами/Форт Лодердейл/Флорида/США.

## Контактная информация

---

Email: [andrey@shestakovyachtsales.com](mailto:andrey@shestakovyachtsales.com)

Web: [shestakovyachtsales.com](http://shestakovyachtsales.com)

## Телефоны

---

Краснодарский край: **+7(918)465-66-44**

США, Майами, Флорида: **+1(954)274-4435**

## Время работы

---

Понедельник – Суббота: **9:00 - 21:00**  
EDT

Воскресенье: **Закрито**

## Адрес

---



Harbour Towne Marina, 850 NE 3rd St,  
STE 213, Dania, FL 33004