

SOPHIE BLUE — CBI NAVI



Builder: CBI NAVI

Year Built: 1998

Model: Motor Yacht

Price: PRICE ON APPLICATION

Location: Italy

LOA: 134' 7" (41.00m)

Beam: 27' 11" (8.50m)

Max Draft: 7' 11" (2.40m)

Cruise Speed: 13 Kts. (15 MPH)

Max Speed: 17 Kts. (20 MPH)

Our experienced yacht broker, Andrey Shestakov, will help you choose and buy a yacht that best suits your needs **SOPHIE BLUE — CBI NAVI** from our catalogue. Presently, at Shestakov Yacht Sales Inc., we have a wide variety of yachts available on our sale's list. We also work in close contact with all the big yacht manufacturers from all over the world.

If you would like to buy a yacht **SOPHIE BLUE — CBI NAVI** or would like help answering any questions concerning purchasing, selling or chartering a yacht, please call **+1(954)274-4435**

TABLE OF CONTENTS

TABLE OF CONTENTS	2
SPECIFICATIONS	4
Basic Information	4
Dimensions	4
Speed, Capacities and Weight	4
Accommodations	4
Hull and Deck Information	4
Engine Information	5
DETAILED INFORMATION	6
Accommodations	6
Electronics and Navigational Equipment	6
Engine /Mechanical Equipment	6
Galley	7
Tenders	7
A/V Equipment	7
Exclusions	7
Disclaimer	7
PHOTOS	8
Game table	8
Main saloon	8
Main saloon	8
Main saloon	8
Dining	8
Dining	8
Hallway	9
Entrance Owner's area	9
Master's office	9
Master's stateroom	9

Master's stateroom	9
Master's stateroom bathroom	9
Guest double stateroom	10
Guest bathroom	10
Guest twin stateroom	10
Guest twin stateroom 1	10
Guest twin stateroom	10
Guest bathroom	10
Guest twin stateroom 2	11
Sundeck	11
Sundeck looking aft	11
Swimming pool	11
Dining area on sundeck	11
Main deck aft	11
Engine room	12
Stern	12
Sundeck view	12
Running	12
Aerial view	12
Sundeck view	12
Runnin	13
Running	13
Stern view	13
CONTACTS	14
Contact details	14
Telephones	14
Office hours	14
Address	14

SPECIFICATIONS

Basic Information

Category: Motor Yacht

Sub Category: Displacement

Model Year: 1998

Year Built: 1998

Refit Year: 2010

Country: Italy

Cockpit: Yes

Dimensions

LOA: 134' 7" (41.00m)

Beam: 27' 11" (8.50m)

Max Draft: 7' 11" (2.40m)

Speed, Capacities and Weight

Cruise Speed: 13 Kts. (15 MPH)

Cruise Speed Range: 2925

Max Speed: 17 Kts. (20 MPH)

Displacement: 2204.62262 Pounds

Accommodations

Total Cabins: 6

Sleeps: 12

Hull and Deck Information

Hull Material: Steel

Deck Material: Teak

Exterior Designer: Luca Dini

Engine Information

Engines: 2

Manufacturer: Caterpillar

Model: 2 x 1800 HP Caterpillar mod. 3512 B **Engine Type:** Inboard

Fuel Type: Diesel

DETAILED INFORMATION

Accommodations

Sophie Blue has a simple, warm and high quality mahogany interior. Famous Luca Dini Design is responsible for her beautiful exterior and interior design. She has timeless styling, sumptuous furnishings and seating features throughout her living areas to create an elegant and comfortable atmosphere.

Main salon The salon is a social focal point with 3 large L shaped sofas, additional lounge chairs, a games / cocktail table, complete wet bar where there are two fridges and ice maker. The décor has light and coral soft furnishings with white carpeting, giving a tasteful contrast to the dark woods. The salon also has a TV entertainment center. Sophie Blue's impressive leisure and entertainment facilities make her the ideal yacht for socializing and entertaining with family and friends. The formal dining space is separate and forward of the salon and has an elegant atmosphere featuring a beautiful oval table set on gorgeous high gloss traditional wood floors. It has a table for 10 guests and has a direct access to the galley.

Master stateroom The full beam Master stateroom, located on the main deck, has a separate office, walk-in wardrobe, settee, vanity and safe. The stateroom benefits from plenty of light thanks to large portholes on each side. The Master cabin's bathroom is equipped with a luxury fixtures and elegant wood paneling. It has a marble twin sink and shower. Bed size (2,10 x 2,00m)

VIP cabin The VIP cabin is located on the lower deck and is also equipped with King size bed. Bed size (2,00m x 1,70m)

Twin cabins (x 4) Four twin cabins are located on the lower deck. Bed size (2,00m x 1,00m) All cabins are ensuite with bathrooms with marble and quality fixtures.

Crew Mess The crew mess is located at the forward and has a laundry room, 2 washing machines, a drying machine, an ironing station and 3 crew cabins with individual bathrooms.

Aft deck Sophie Blue has ample deck space for all to enjoy; the aft deck has wicker style set of 2 large outdoor sofas with 2 lounge chairs and a coffee table, off the stern the clever drop down door doubles as a 10 square meter private teak-beach ensuring easy water access to enjoy the toys.

Sun deck Above the main deck, the sundeck offers guests plenty of places to relax. It has wicker style and coral colored cushions with an alfresco dining option and round cabana seats. There is a Jacuzzi tub and a substantial surrounding sun pad.

Deck forward There is a further alfresco dining option and sun pads on the deck forward. Comfortable seating with a C shaped seating able to accommodate for 6 to 8 guests.

Electronics and Navigational Equipment

Radar: Furuno 1824C-BB GPS: Furuno GP 30 Chart plotter: Furuno GD-190C-BB Eco Sounder: Black Box Auto Pilot: Anschutz, Log, Girouette Sounder: Furuno FCV 611 VHF: Sailor compact, Sailor DSC SSB: Skantiv TRP 7000 Interphone: Cantalupi Telephone: Panasonic Satellite Phone: Thrane TT3046 - A Security Cameras: JVC Navtex: Furuno nx-700 AIS: Furuno FA-150

Engine /Mechanical Equipment

Engines: 2 x 1800 HP Caterpillar mod. 3512 B Engine hours (August 2013): 3500 Propulsion: Shaft line with 6 blade props Inverter/ ZF mod. BW 465 Consumption/ 340L at 13 knots Range 2925 nm Generator: 3 x 80 Kw Norther lights Generator hours (August 2013): 11500 Emergency Generator: 2500 Hrs Electricity: 12/24/220/380 - 50 Hz Bow thruster: Hydromarine - Mannsman rexroth mod. YM-BT20 Air conditionning: Marine Air 250.000 BTU Stabiliser: Zero speed Naiad

Galley

1 x Cooking station 1 x Oven 1 x Dish washer 1 x Fridge 1 x Freezer

Tenders

Novurania 5.40 inbord 2 x Jet skis

A/V Equipment

Main salon: Television: LCD DVD player: Sony Hifi: Sony Decoder: Sky Italy Master stateroom: Plasma screen DVD player Sky box Hifi system Vip cabin: DVD player and hifi system Twin cabins: Hifi system available Crew mess: Sony TV

Exclusions

Owner's personal belongings.

Disclaimer

The Company offers the details of this vessel or yacht in good faith but cannot guarantee or warrant the accuracy of this information nor warrant the condition of the vessel. A buyer should instruct his representatives, agents, or his surveyors, to investigate such details as the buyer desires validated. This vessel or yacht is offered subject to prior sale, price change, or withdrawal without notice.

PHOTOS

Game table



Main saloon



Main saloon



Main saloon



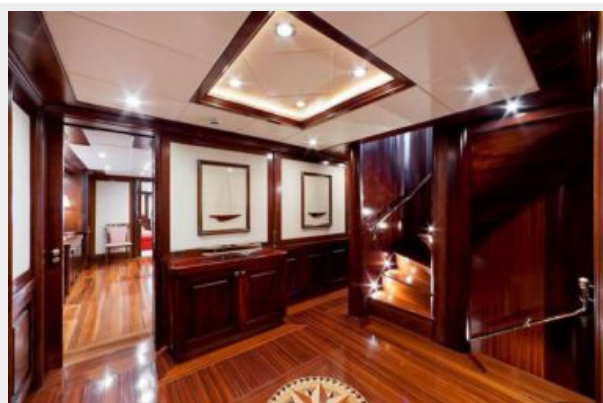
Dining



Dining



Hallway



Entrance Owner's area



Master's office



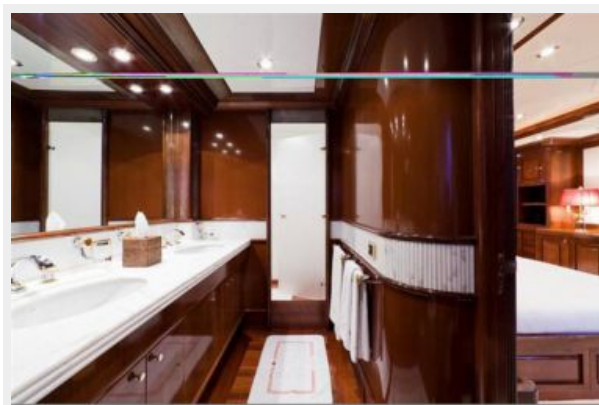
Master's stateroom



Master's stateroom



Master's stateroom bathroom



Guest double stateroom**Guest bathroom****Guest twin stateroom****Guest twin stateroom 1****Guest twin stateroom****Guest bathroom**

Guest twin stateroom 2



Sundeck



Sundeck looking aft



Swimming pool



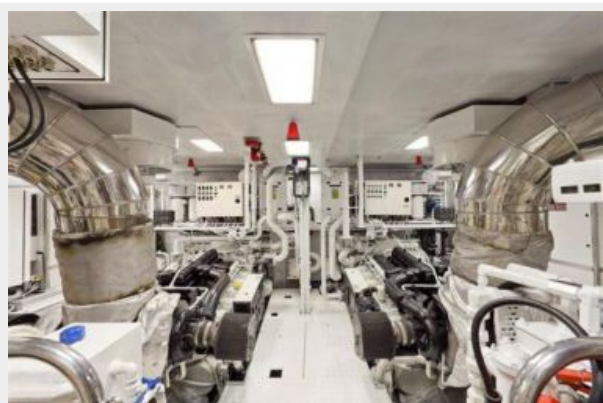
Dining area on sundeck



Main deck aft



Engine room



Stern



Running



Sundeck view

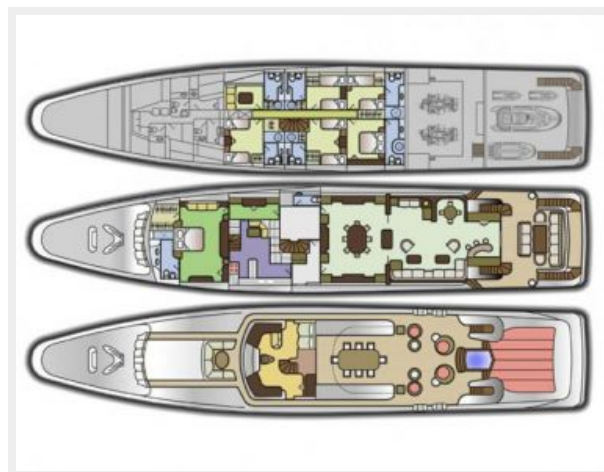


Aerial view



Sundeck view



Running**Runnin****Stern view**

CONTACTS

Andrey Shestakov, leading yacht broker of the sales department of Shestakov Yacht Sales Inc. Shestakov Yacht Sales Inc., the official representative of the Miami/Fort Lauderdale FL headquarters.

Contact details

Email: **andrey@shestakovyachtsales.com**

Web: shestakovyachtsales.com/en/

Telephones

USA: **+1(954)274-4435**

Office hours

Monday – Saturday: **9:00 - 21:00 EDT**

Sunday: **closed**

Address



Harbour Towne Marina, 850 NE 3rd St,
STE 213, Dania, FL 33004