

## RAIN E DAZE — CABO



**Судостроитель:** CABO

**Год постройки:** 2007

**Модель:** Катер для спортивной рыбалки

**Цена:** **ЦЕНА ЯХТЫ ПО ЗАПРОСУ**

**Местонахождение:** United States

**Длина общая:** 32' 0" (9.75m)

**Ширина:** 13' 3" (4.04m)

**Макс. осадка:** 2' 8" (0.81m)

Купить Rain E Daze — CABO а также выбрать подходящую вам яхту из нашего каталога яхт вам поможет опытный яхтенный брокер Андрей Шестаков. На сегодняшний день компания Shestakov Yacht Sales Inc. имеет большое количество яхт в собственном списке продаж, а также тесно сотрудничает со всеми крупными яхтенными производителями по всему миру.

Для того чтобы купить яхту Rain E Daze — CABO а также проконсультироваться по любому вопросу связанному с покупкой, продажей, чартером яхт позвоните по телефону **+7(918)465-66-44**.

# ОГЛАВЛЕНИЕ

---

ОГЛАВЛЕНИЕ	2
ХАРАКТЕРИСТИКИ	4
Обзор	4
Основная информация	4
Размеры	4
Скорость, вместимость и масса	5
Корпус и палуба	5
Информация о двигателе	5
ПОДРОБНОЕ ОПИСАНИЕ	6
Accommodations	6
Main Cabin	6
Galley	6
Forward Berth	7
Head Compartment	7
Helm Console/Electronics	7
Helm Deck	8
Electrical	8
Mechanical	8
Hull	9
Deck	9
Cockpit	10
Features	10
Exclusions	11
Disclaimer	11
Исключения	11
Отказ от ответственности	11
ФОТОГРАФИИ	13
КОНТАКТЫ	17

---

Контактная информация	17
Телефоны	17
Время работы	17
Адрес	17

---

# ХАРАКТЕРИСТИКИ

## Обзор

CABO Yachts 32 Express represents the finest in hull design from Michael Peters Yacht Design, coupled with the renowned CABO execution of overall yacht design, engineering and construction. The hull is remarkably balanced to provide a dry, smooth and fast ride. A balanced hull is the most difficult design aspect of any sportfisher under 35 feet. The proper balance allows the CABO 32 Express to ride high in waves, kick up less spray and move forward effortlessly.

The CABO 32 Express has a weight distribution similar to that of much larger boats. This allows the CABO 32 to track better, especially in following seas. The key is to move as much weight as possible aft. That delicate balance creates a superior sportfisher, one worthy of the CABO reputation for building the best production sportfishers in the world.

Of course, the CABO 32 is built with the same care and quality as that of the largest CABO - color-coded and labeled wiring, stainless steel hardware and more, as well as the meticulous attention to detail that comes with every CABO. "Rain E Daze" features low hours on the preferred-quieter Cummins Common Rail diesels, a custom Hardtop and a Furuno electronics package. Combine this with Cabo's legendary quality and you get a premium offshore fishing machine. Call listing broker for more details or to setup an appointment to see the boat.

## Основная информация

**Тип судна:** Катер для спортивной рыбалки

**Подкатегория:** Express

**Модельный год:** 2007

**Год постройки:** 2007

**Страна:** United States

**Кубрик:** Да

## Размеры

**Длина общая:** 32' 0" (9.75m)

**Ширина:** 13' 3" (4.04m)

**Макс. осадка:** 2' 8" (0.81m)

## Скорость, вместимость и масса

---

**Водоизмещение:** 19100 Pounds

**Вместимость воды:** 50 Gallons

**Вместимость сточного бака:** 25 Gallons **Объем топливного бака:** 350 Gallons

## Корпус и палуба

---

**Материал корпуса:** Fiberglass

## Информация о двигателе

---

**Двигатели:** 2

**Производитель:** Cummins

**Модель:** QSB 5.9

**Тип двигателя:** Inboard

**Тип топлива:** Diesel

---

# ПОДРОБНОЕ ОПИСАНИЕ

---

## Accommodations

---

The interior of "RAIN E DAZE" is in perfect condition and features full Teak & Holly sole flooring down below. The dinette is L-shaped to the starboard side. The back cushion flips up to make two single berths. The main sleeping area has a very large full sized bed that is angled to maximize room.

The galley is fully appointed. with a stainless steel Tappan microwave/convection oven, a hidden two burner Kenyon stove top, Stainless steel faucet, Corian counter top and two Nova Cool under counter refrigerator/freezers.

The interior is surprisingly large for a 32 ft. express. For a comparable size interior you would need to go to a 35-36 foot boat.

The head is fully enclosed with, the shower was never used. The VacuFlush head is plumbed to a holding tank with a deck plate and macerator.

## Main Cabin

---

- AC Duplex Outlets, GFI Protected
- Access Hatch To Bilge
- Air Conditioning/Heating 10,000 BTU
- Teak Interior Wood Superbly Joined & Finished In Satin Varnish
- "L" Shaped Lounge Converts to Upper & Lower Sleeping Berths W/ Removable Table
- Recessed Halogen Lighting
- Positive Latches On Cabin Doors & Drawers
- Selection Of Fine Quality Interior Fabrics & Coverings Throughout

## Galley

---

- AC Duplex Outlet / GFI Protected
- Ceramic Two Burner Cook Top Recessed W/ Corian Cover
- Corian Counter Top W/ Custom Corian Sea Rails
- Counter Top Recessed Halogen Lighting
- TAPPAN Convection Microwave Oven
- AC/DC Side By Side Refrigerator/Freezer

- Deep Single Sink
- Storage Compartments & Silverware Drawer

---

## Forward Berth

---

- Access to Anchor/Rope Locker
- Deck hatch Opening W/ Screen & Sun Shade
- Offset Double Berth W/ Storage Below
- Positive Latches On Cabinet Doors & Drawers
- Recessed Halogen Lighting
- Rod Storage Cabinets Port & Starboard

---

## Head Compartment

---

- Custom Vanity W/ Mirror
- Custom Vanity Sink
- Electric Marine Head
- Recessed DC Halogen Lighting
- Positive Latches On Cabinet Doors
- Hand Held Shower W/ Automatic Shower Sump Pump
- Storage Cabinet W/ Sliding Mirror Doors
- Towel Rack

---

## Helm Console/Electronics

---

- Furuno NAVNET VX 2 12" MFD C-Map NT MAX
- Furuno GPS Sensor
- Furuno Radar w/ Open Array Antenna
- Furuno Fish Finder
- Simrad AP26 Auto Pilot
- ICOM IC M-502 VHF Radio
- ICOM IC M-604 VHF Radio
- Furuno RD 30 Digital Depth Finder w/Bronze Transducer
- AM/FM CD Stereo w/6 Speakers
- 17' LCD Flat Panel TV (Below)
- Flush Mounted Compass W/ Light

- (2) Cummins CM Smart Craft Engine Instrumentation Displays W/ Audible Warning System
- Custom Switch Panels
- Fire & Bilge Water Level W/ Audible Alarms

---

## Helm Deck

---

- Integrally Molded Helm Console
- Adjustable Helm & Companion Seats W/ Adjustable Foot Rest
- Hydraulically Lifted Molded Fiberglass Helm Deck W/ Cockpit Control
- White Translucent Acrylic Sliding Companionway Door W/ Latch, Lock & Safety Stop.
- Starboard Storage Cabinets W/ Tackle Drawers
- Port Storage Cabinets

---

## Electrical

---

- 5 KW Freshwater-Cooled Diesel Generator W/ Sea Strainer, Remote Start & Gauge Panel, Water Muffler, Safety Shut Down System
- 30 AMP Shore Power W/ 50' Shore Cord
- (5) Batteries
- Automatic Battery Charger
- Automatic Battery Paralleling
- Bonded Electrical System
- Circuit Breaker Protection Throughout
- Custom AC/DC Electrical Distribution Panel W/ Line Voltage, Battery Voltage, Load Meter & Reverse Polarity Light
- DC Engine Room Lighting
- Dual Trumpet Air Horn
- Reverse Cycle Air Conditioning/Heat
- Vapor Proof Battery On/Off Switches

---

## Mechanical

---

- Twin Cummins Diesel QSB 5.9 Engines 425 HP Each
- (2) Engine Hour Meters W/515 Hours As Of 7/1/2011
- (3) DC/ Auto/Man Bilge Pumps
- Bilge W/ White Gel-Coated Finish



- Bonding System W/ Transom Zinc Plate
- Bronze High Speed Water Intake Scoops W/ Integral Sea Water Strainers
- Bronze UL Approved Sea Cocks Fitted On All Thru-Hulls Below The Water Line
- Bronze Drip Less Stuffing Boxes
- DC Windlass For Rope & Chain
- Double Contact Torque SS Clamps On Engine Exhaust Hoses
- Double SS Hose Clamps On All Hose Fittings Where Possible
- Emergency Bilge Suction Valve On One Engine
- Engine Alarm System
- Fiberglass Baffled Fuel Tank W/ Fire-Retardant Vinylester Resins
- Fire Extinguishing System
- Fresh Water Cooling System On Main Engines
- Fuel Filters W/ Water Separators On Main Engines & Generator
- High Water Bilge Alarm
- High Strength Bronze Rudders
- Holding Tank W/ Macerator & Dockside Discharge
- Metal Braided Fire-Retardant Fuel Lines
- Mufflers Fiberglass W/ Backwash Surge Tube
- Propeller Shafts, 1.75 Inch Diameter, Double Taper
- Silver Mylar Faced High Density Engine Room Sound Insulation
- SS Water Heater

---

## Hull

- Molded Fiberglass Construction W/ Superior ISO/NPG Gelcoat Finish & Premium Vinylester Resins Throughout Bi-Axial Stitched Fabric Reinforcement
- Solid Fiberglass Bottom
- Core Construction From Chine To Sheer
- Premium Quality Molded-In Gelcoat Finish
- Stainless Steel Rub Strip On Face Of White High Density PVC Rub Rail
- Fully Recessed Trim Tabs

---

## Deck

- Aluminum Reinforcing Plate Installed For Mounting Fighting Chair Or Rocket Launcher
- Custom Aluminum Bow Rails
- 10" SS Bow Cleats
- Molded Fiberglass Integral Bow Pulpit
- Molded Fiberglass Using Premium Polyester Resin, Bi-Axial Stitched Fabric

### Reinforcement & Core Construction

- Molded-In Non Skid Surface
- Premium Quality Molded In White Gelcoat Finish
- Recessed Custom Stainless Steel Anchor Roller Assembly
- 10" SS Spring Line Cleats
- 10" SS Stern Cleats
- SS Stern Hawse Pipes
- HD Aluminum Windshield W/ White Painted Finish & Center Vent
- (2) Self Parking Windshield Wipers W/ Washers

## Cockpit

---

- Port Side Bait Prep Center Includes Sink, Rigging Board, Fitted Lid W/ Gas Spring Actuator & Tackle Storage
- 45 Gallon Bait Tank Molded Into Transom W/ Large Overboard Drain
- Courtesy Lighting Under Gunwales
- Large Removable Fishbox Built Into Cockpit Sole
- Port & Starboard Gaff Racks
- Starboard Side Ice Box Fitted W/ Gasketed Lid & Gas Spring Actuator
- Padded Cockpit Coaming
- (4) Rod Holders
- Self Bailing Cockpit Scuppers
- Port & Starboard Side Step
- Transom Door W/ Top Gate & Extreme Duty Polished SS Hardware
- Saltwater Washdown

## Features

---

- Hull Color: White
- Boot Stripe: Black
- Bottom Paint: Black
- Interior: St. Augustine
- Corian Color: Fossil
- Bow Rail: Std. East Coast Brushed Aluminum
- Teak & Holly Sole
- Trim Tabs, Fully Recessed
- Custom Rocket Launcher
- Sheet Set

- 17" LCD Flat Screen TV/DVD
- Stereo AM/FM/CD 12V w/ 6 Speakers
- Main Cabin: L-Shaped Lounge Converts to Upper & Lower Sleeping Berths w/Removable Table
- Forward Cabin: Offset Double Berth w/Storage below
- Forward Cabin: Rod Storage Cabinets Port & Starboard; Total 8 Rods
- Custom Hardtop W/ 3 Sided Enclosure
- 7 Flush Mounted Rod Holders

---

## Exclusions

---

While every effort was made to include all pertinent included equipment aboard "RAIN E DAZE", there are some personal items aboard. Prospective purchasers should assume any item not specifically mentioned herein would not convey at closing. Refer specific items in question to the listing broker.

---

## Disclaimer

---

While we attempt to display current and accurate data, this listing may not reflect the most recent transactions or may contain occasional data entry errors. Selling agent makes no warranties, express or implied, regarding the content or availability of the products described herein. All inventory listed is subject to availability and prior sale. Please consult selling agent for details. Prices are quoted for the USA only and may not include transportation, taxes, or other applicable charges. Photographs may be representative only and may vary somewhat from the actual items offered for sale. We will not be responsible for inaccurate data obtained from our site. Please check with your local dealer to ensure that you have the latest information available. Information on this web site could include technical inaccuracies or typographical errors. Changes may be periodically made to the information or the products herein. Questions or comments regarding these policies may be directed to website hosting agent.

---

## Исключения

---

При продаже яхты исключаются личные вещи владельца.

---

## Отказ от ответственности

---

Компания предоставляет описание судна или яхты добросовестно, но не может гарантировать точность этой информации, а также не ручается за техническое состояние. Покупатель должен проинструктировать своих агентов или оценщиков

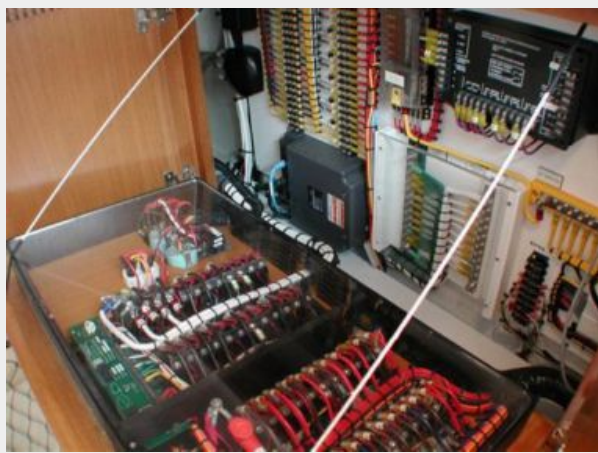
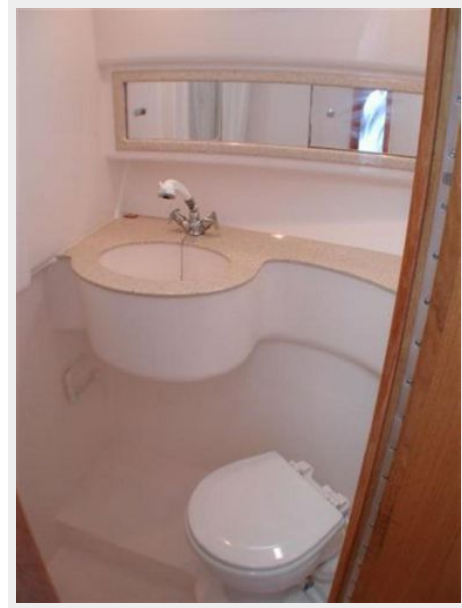
исследовать представленную информацию более подробно, по собственному желанию. Продажа судна или яхты, изменение цены или снятие с продажи будет происходить без предварительного уведомления.

# ФОТОГРАФИИ













# КОНТАКТЫ

---

Андрей Шестаков (Andrey Shestakov) – ведущий яхтенный брокер отдела продаж яхт и судов компании Shestakov Yacht Sales Inc. Официальный представитель Shestakov Yacht Sales Inc. для русскоговорящих клиентов в центральном офисе компании в Майами/Форт Лодердейл/Флорида/США.

## Контактная информация

---

Email: [andrey@shestakovyachtsales.com](mailto:andrey@shestakovyachtsales.com)

Web: [shestakovyachtsales.com](http://shestakovyachtsales.com)

## Телефоны

---

Краснодарский край: **+7(918)465-66-44**

США, Майами, Флорида: **+1(954)274-4435**

## Время работы

---

Понедельник – Суббота: **9:00 - 21:00**  
EDT

Воскресенье: **Закрето**

## Адрес

---



Harbour Towne Marina, 850 NE 3rd St,  
STE 213, Dania, FL 33004