

GAME ON — BUDDY DAVIS



Builder: BUDDY DAVIS

Year Built: 1989

Model: Sport Fisherman

Price: PRICE ON APPLICATION

Location: United States

LOA: 47' 0" (14.33m)

Beam: 16' 0" (4.88m)

Max Draft: 4' 0" (1.22m)

Cruise Speed: 24 Kts. (28 MPH)

Max Speed: 30 Kts. (35 MPH)

Our experienced yacht broker, Andrey Shestakov, will help you choose and buy a yacht that best suits your needs **Game on — BUDDY DAVIS** from our catalogue. Presently, at Shestakov Yacht Sales Inc., we have a wide variety of yachts available on our sale's list. We also work in close contact with all the big yacht manufacturers from all over the world.

If you would like to buy a yacht **Game on — BUDDY DAVIS** or would like help answering any questions concerning purchasing, selling or chartering a yacht, please call **+1(954)274-4435**

TABLE OF CONTENTS

TABLE OF CONTENTS	2
SPECIFICATIONS	3
Basic Information	3
Dimensions	3
Speed, Capacities and Weight	3
Accommodations	3
Hull and Deck Information	3
Engine Information	4
DETAILED INFORMATION	5
Introduction	5
Vessel Walkthrough	5
Main Salon	5
Galley & Dinette	5
Master Stateroom	5
Deck	6
Electronics And Helm	6
Electrical	6
Engine Details & Mechanical Equipment	6
Detailed Broker's Comments	6
Exclusions	6
Disclaimer	7
PHOTOS	8
CONTACTS	14
Contact details	14
Telephones	14
Office hours	14
Address	14

SPECIFICATIONS

Basic Information

Category: Sport Fisherman

Sub Category: Convertible

Model Year: 1989

Year Built: 1989

Country: United States

Cockpit: Yes

Dimensions

LOA: 47' 0" (14.33m)

Beam: 16' 0" (4.88m)

Max Draft: 4' 0" (1.22m)

Speed, Capacities and Weight

Cruise Speed: 24 Kts. (28 MPH)

Max Speed: 30 Kts. (35 MPH)

Displacement: 42000 Pounds

Water Capacity: 100 Gallons

Fuel Capacity: 760 Gallons

Accommodations

Total Cabins: 2

Hull and Deck Information

Hull Material: Fiberglass

Engine Information

Engines: 2

Manufacturer: Caterpillar

Model: C12

Engine Type: I/O

Fuel Type: Diesel

DETAILED INFORMATION

Introduction

This boat is a battle wagon. This is one of the best riding boats on the water. Built by Buddy Davis himself. Best sea boat in it class.

Vessel Walkthrough

Starting at the stern there is a fighting chair. On the bulkhead there is a tackle center and freezer. The salon door is just off center to the port side. As you walk in the door there are couches on the port and starboard side. The salon offers comfort and is user friendly. The galley is down on the port side. It is a full galley. Across from the galley is the dinette. AS you move forward in the boat you go down a set of stairs. At the bottom of the stairs there is a stand up washer and drier to the star side. On the port side there is the crew's quarters. This is a bunk room with one bunk that runs forward and aft and one that is side to side. Back to the star side there is a day head and shower. Forward of this is the master state room. This is a queen sized bed, cedar closets, plenty of storage, and an entertainment center. All the way forward in the boat is the master head and shower.

Main Salon

The main salon has a teak finish. The couches are leather and are on the port and star side. The floor has a full rug. There is a large flat screen TV and entertainment center on the port side forward in the salon. There is a bar in the center of the salon with two bar stools.

Galley & Dinette

The galley is down to the left side it is a full size galley. There is a full size stand up refrigerator and freezer, Jenn Air stove, microwave, stainless sink, cabinet storage, counter space, teak and holly floor.

Master Stateroom

The master is forward there is a queen size bed that run forward and aft. There are hanging closets, and an entertainment center on the star side. It has a head and shower that is just for the master.

Deck

The decks are non skid. There is a fighting chair w/rocket launcher, helm chair, hard top, rocket launcher on fly bridge, bridge ladder, bench seats on the bridge, Rupp outriggers, grab rail going to the bow, pulpit, windlass, fish boxes, tackle center, rod holders, cleats, three sided enclosure.

Electronics And Helm

- Cat controls
- Furuno Navnet
- 2-GPS sounder fish finder- radar all in one
- 2 Icom VHF radios
- B&G 92
- Garmin 3010 GPS plotter
- Simrad AP 22 auto pilot

Electrical

- 50 amp shore power cord 120 and 240 service
- 12 volt system
- 4 8d batteries w/century charger
- Two cruise air units
- Salt and fresh water pumps
- Nor pro 18kw gen
- Hot water heater

Engine Details & Mechanical Equipment

Caterpillar C12 705 hp 250hrs year 2006 Warranty left on engines

Detailed Broker's Comments

The boat has many new upgrades. All new enclosure, new deck and covering boards, fresh paint job in 2011

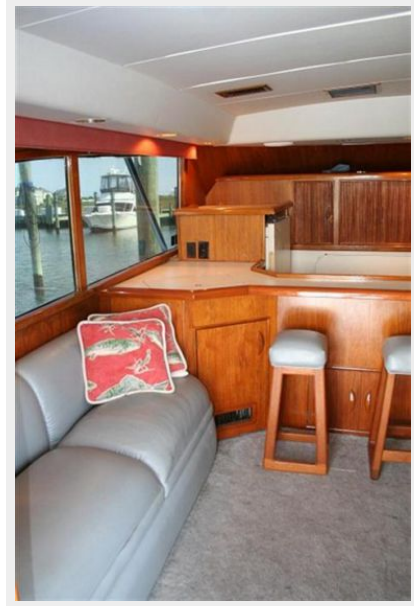
Exclusions

Owner's personal belongings.

Disclaimer

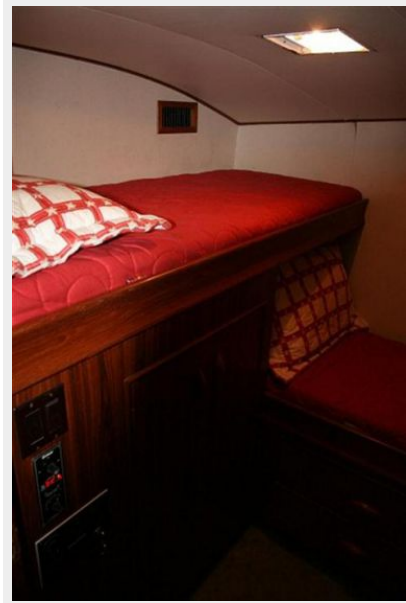
The Company offers the details of this vessel or yacht in good faith but cannot guarantee or warrant the accuracy of this information nor warrant the condition of the vessel. A buyer should instruct his representatives, agents, or his surveyors, to investigate such details as the buyer desires validated. This vessel or yacht is offered subject to prior sale, price change, or withdrawal without notice.

PHOTOS













CONTACTS

Andrey Shestakov, leading yacht broker of the sales department of Shestakov Yacht Sales Inc. Shestakov Yacht Sales Inc., the official representative of the Miami/Fort Lauderdale FL headquarters.

Contact details

Email: andrey@shestakovyachtsales.com

Web: shestakovyachtsales.com/en/

Telephones

USA: +1(954)274-4435

Office hours

Monday – Saturday: **9:00 - 21:00** EDT

Sunday: **closed**

Address



Harbour Towne Marina, 850 NE 3rd St,
STE 213, Dania, FL 33004