

NEPTUNE — FITZROY YACHTS



Builder: FITZROY YACHTS

Year Built: 2004

Model: Cruising Sailboat

Price: PRICE ON APPLICATION

Location: Italy

LOA: 84' 0" (25.60m)

Beam: 21' 4" (6.50m)

Max Draft: 10' 6" (3.20m)

Cruise Speed: 15 Kts. (17 MPH)

Our experienced yacht broker, Andrey Shestakov, will help you choose and buy a yacht that best suits your needs **NEPTUNE — FITZROY YACHTS** from our catalogue. Presently, at Shestakov Yacht Sales Inc., we have a wide variety of yachts available on our sale's list. We also work in close contact with all the big yacht manufacturers from all over the world.

If you would like to buy a yacht **NEPTUNE — FITZROY YACHTS** or would like help answering any questions concerning purchasing, selling or chartering a yacht, please call **+1(954)274-4435**

TABLE OF CONTENTS

TABLE OF CONTENTS	2
SPECIFICATIONS	3
Overview	3
Basic Information	3
Dimensions	3
Speed, Capacities and Weight	3
Accommodations	3
Hull and Deck Information	4
Engine Information	4
PHOTOS	5
CONTACTS	6
Contact details	6
Telephones	6
Office hours	6
Address	6

SPECIFICATIONS

Overview

Neptune is a stunning aluminium sloop of Judel/Vrolijk design. The spacious accommodation includes a three guest cabin layout aft, all with private en suite bathrooms. The two forward crew cabins also have separate bathrooms. The large main saloon includes a comfortable dining area and lounge. The deckhouse incorporates an additional dining area, chart table and inside steering station.

Basic Information

Category: Cruising Sailboat

Model Year: 2004

Year Built: 2004

Country: Italy

Dimensions

LOA: 84' 0" (25.60m)

Beam: 21' 4" (6.50m)

Max Draft: 10' 6" (3.20m)

Speed, Capacities and Weight

Cruise Speed: 15 Kts. (17 MPH)

Displacement: 160937.45126 Pounds

Water Capacity: 396.258078 Gallons

Fuel Capacity: 1532.1979016 Gallons

Accommodations

Total Cabins: 5

Total Berths: 10

Crew Berths: 2

Crew Sleeps: 4

Hull and Deck Information

Hull Material: Aluminum

Deck Material: Teak

Hull Color: Dark Blue

Hull Designer: Judel-Vrolok

Engine Information

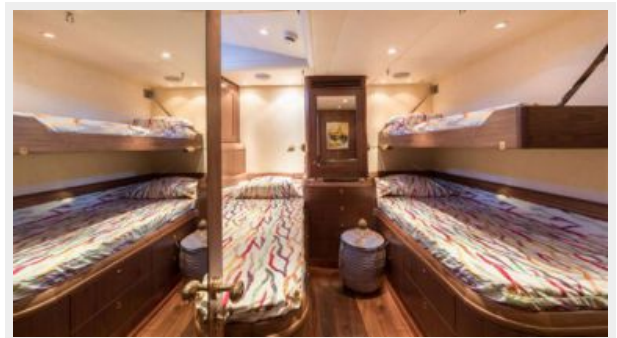
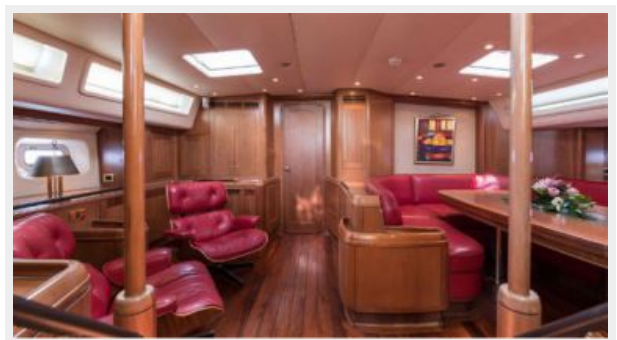
Engines: 1

Manufacturer: Luger

Model: 222KW

Fuel Type: Diesel

PHOTOS



CONTACTS

Andrey Shestakov, leading yacht broker of the sales department of Shestakov Yacht Sales Inc. Shestakov Yacht Sales Inc., the official representative of the Miami/Fort Lauderdale FL headquarters.

Contact details

Email: andrey@shestakovyachtsales.com

Web: shestakovyachtsales.com/en/

Telephones

USA: +1(954)274-4435

Office hours

Monday – Saturday: **9:00 - 21:00** EDT

Sunday: **closed**

Address



Harbour Towne Marina, 850 NE 3rd St,
STE 213, Dania, FL 33004