

## NIGHT SWAN — OYSTER MARINE LTD



**Судостроитель:** OYSTER MARINE LTD

**Год постройки:** 1996

**Модель:** Cruising/Racing Sailboat

**Цена:** ЦЕНА ЯХТЫ ПО ЗАПРОСУ

**Местонахождение:** United States

**Длина общая:** 48' 6" (14.78m)

**Ширина:** 14' 0" (4.27m)

**Макс. осадка:** 6' 2" (1.88m)

Купить **Night Swan — OYSTER MARINE LTD** а также выбрать подходящую вам яхту из нашего каталога яхт вам поможет опытный яхтенный брокер Андрей Шестаков. На сегодняшний день компания **Shestakov Yacht Sales Inc.** имеет большое количество яхт в собственном списке продаж, а также тесно сотрудничает со всеми крупными яхтенными производителями по всему миру.

Для того чтобы купить яхту **Night Swan — OYSTER MARINE LTD** а также проконсультироваться по любому вопросу связанному с покупкой, продажей, чартером яхт позвоните по телефону **+7(918)465-66-44**.

# ОГЛАВЛЕНИЕ

---

ОГЛАВЛЕНИЕ	2
ХАРАКТЕРИСТИКИ	4
Обзор	4
Основная информация	4
Размеры	4
Скорость, вместимость и масса	4
Размещение	4
Корпус и палуба	5
Информация о двигателе	5
ПОДРОБНОЕ ОПИСАНИЕ	6
Accommodations	6
Galley	7
Electronics	7
Electrical System	8
Engine and Mechanical Equipment	8
Hull and Deck	9
Mast, Sails and Rigging	10
Canvas	11
Safety and Fire Protection	11
Closing Remarks	12
Исключения	12
Отказ от ответственности	12
ФОТОГРАФИИ	13
Salon Looking Aft to Starboard Side	13
Salon looking aft to Port Side	13
Salon Dining	13
Salon Port Side	13
Salon, Starboard Settee	13

---

Nav Station	13
Companionway Steps	14
Galley	14
Galley Stove	14
Owner's Stateroom	14
Forward Head	15
Forward Guest Cabin	15
Cockpit	15
Forward Guest Cabin	15
Deck	16
Electric Headsail Winch	16
Foredeck	16
<b>КОНТАКТЫ</b>	<b>17</b>
Контактная информация	17
Телефоны	17
Время работы	17
Адрес	17

---

# ХАРАКТЕРИСТИКИ

## Обзор

**Night Swan** is an extremely well-equipped Oyster 485 Deck Salon model built in 1996 in England by one of the world's highest quality companies. She has been lightly used in US waters and shows very well. Her condition is exceptional and her equipment inventory includes all the luxury options including furling mainsail and electric primary winches.

## Основная информация

**Тип судна:** Cruising/Racing Sailboat **Модельный год:** 1996

**Год постройки:** 1996 **Страна:** United States

## Размеры

**Длина общая:** 48' 6" (14.78m) **Длина по ватерлинии:** 39' 1" (11.91m)

**Ширина:** 14' 0" (4.27m) **Макс. осадка:** 6' 2" (1.88m)

**Трапы:** 64' 6" (19.66m)

## Скорость, вместимость и масса

**Водоизмещение:** 37550 Pounds **Вместимость воды:** 179 Gallons

**Вместимость сточного бака:** 20 Gallons **Объем топливного бака:** 140 Gallons

## Размещение

**Всего кают:** 2 **Всего коек:** 2

**Спальные места:** 4 **Всего ком. состава:** 2

## Корпус и палуба

---

**Материал корпуса:** Fiberglass

**Материал палубы:** Fiberglass Sandwich

**Цвет корпуса:** Asteria Blue

**Отделка корпуса:** Plastic

**Дизайнер корпуса:** Holman & Pye -  
Oyster Design

## Информация о двигателе

---

**Двигатели:** 1

**Производитель:** Perkins Diesel

**Тип двигателя:** Inboard

**Тип топлива:** Diesel

---

# ПОДРОБНОЕ ОПИСАНИЕ

---

## Accommodations

---

### Manufacturer's Provided Description:

**Night Swan**, a beautiful Oyster 485, is a well-proportioned yacht that looks good from any angle and offers a combination of excellent performance, ease of sail handling offshore and comfort under way. Like all Oysters the 485 features a deck saloon configuration creating a light, airy saloon and unbeatable ventilation. The 485 is well proven as a blue water cruiser, with numerous ocean crossings and at least one circumnavigation to her credit. The 485 has a low center of gravity, high performance bulb keel, and a fully-protected skeg-hung rudder. Performance was demonstrated in an Olympic triangle race during Antigua Race Week, when two 485s led the fleet and showed tremendous speed, particularly to windward. The standard sloop rig is set up with a conventional spar with a fully-battened mainsail and lazy jacks for ease of handling. The majority of these yachts have been fitted with in-mast furling, which enables all sail handling functions to be undertaken from the cockpit.

The Oyster 485 has a spacious owner's stateroom aft featuring a centerline berth which makes the cabin feel light and airy, particularly in warm climates. This stateroom also incorporates a large head within which is a separate stall shower. Forward there's the usual Oyster-type "walkthrough" galley, which is ideally located within easy reach of the cockpit and saloon. Both sides of the galley feature counter space, and ventilation is assured with a number of adjacent opening ports.

The saloon uses the yacht's maximum beam to good effect and includes a pair of oversized opening hullports for use while at anchor or dock, which allows good athwartships ventilation. In addition, really good fore-and-aft ventilation is offered by the deck saloon with its two opening forward windows. The saloon table is a "clam" type design so it can be used in the small size, closed position, typically for drinks or informal gatherings. The table then opens to provide a much larger surface for dining by means of an ingenious pair of additional leaves that unfold from underneath when the table is opened from its "clam" position.

**Night Swan's** forward accommodation has one double cabin forward to suit those owners looking for a yacht with just two cabins, but offers a very high standard of comfort comparable to the owner's stateroom for two guests.

On deck right aft there is a large-size lazarette locker and adjacent propane gas cylinder locker, so that all the usual cruising amenities have suitable stowage. At the end of the aft coachroof there is a pair of large bin lockers with enough space to house a life raft and other safety equipment on one side, with more than enough room for fenders, docklines, and other gear that needs to be kept to hand when sailing. The stern platform has a folding bathing - safety ladder and provides an ideal place to board the yacht from a dinghy. It also houses an optional flush mounted locker for a hot and cold freshwater deck shower.

## Galley

---

Passageway galley very well appointed with ample storage and counter space.

- Refrigeration/Freezer, 120 v Grunert top-loading freezer and front-loading refrigerator
- Force 10 3-burner LPG stove with oven
- Propane solenoid shutoff switch near galley
- Deep double stainless steel sink
- Sink drain pump 24 volt
- Pressurized hot and cold water
- Fresh water filter by CUNO - replaceable cartridge + Puro filter
- Quasar 120v Microwave oven
- Oyster china and silverware set

## Electronics

---

- **Sat phone/internet** - via Sailor Fleet Broadband - **New 2011**
- **Skymate email & position** - **2011**
- Furuno RP 110 chartplotter with Navnet 3D displays at nav station and cockpit - Software upgrade **2011**
- Garmin 2006C chartplotter mounted in a nav pod at helm - Software upgrade **2011**
- Furuno color radar with 19" closed array, displays in cockpit and nav station
- Furuno GPS/WAAS, GP-32 Navigator
- ICOM VHF radio IC-M58 at nav station
- ICOM VHF M-72 handheld submersible - **New 2011**
- Autohelm ST7000 autopilot
- ICOM SSB radio, IC -M710
- Two Dynaplates, 3" x 8" and 2 1/2" x 5"
- Furuno F1-50 wind/True/Apparent/Speed/Direction
- Furuno F1-50 Multi Depth Sounder
- Furuno F 1-50 Multi speed log
- Binnacle mounted compass
- Weems and Plath barometer and ship's clock

- Pioneer AM/FM/CD
- Pioneer 6 CD changer
- Hitachi 26" flat screen TV - 2011
- **KVH TracVision** satellite TV antenna - reconditioned **Jan 2011**

---

## Electrical System

---

DC system:

- Main 24 v system DC panel is located at nav station

Batteries:

- AGM 12v batteries
- 2 group #24 wired as (1) 24v bank for bow thruster
- 6 Energy Star batteries in parallel making up 24 volt bank
- Engine start battery - 2 x 12 v = 24 v.
- Generator start battery - 12 volt
- Batteries located under main salon sole, secured
- Rotary type main battery switches
- Link 2000 battery monitor/inverter controller
- Xantrex Freedom inverter/charger 65 amp
- Two alternators, engine mounted 1 x 40 amp, 1 x 125 amp

AC System

- Onan 6 KW genset 120/240 v.
- Racor fuel/water separator filter, one for main engine, one for generator
- Generator muffler - polyplastic water lift type
- Xantrex Freedom Marine 2500 inverter/charger
- MAIN AC PANEL with analog volt and amp gauges
- 2 Hubbell 50 amp 125v/150v inlets
- 2 30 amp shore power cords with various 50 amp Y splitters

---

## Engine and Mechanical Equipment

---

- Perkins Model M90, 80 hp 4-cylinder naturally-aspirated diesel - **1846 hours**
- Perkins control panel with audible alarms and analog gauges
- Racor fuel and water separator type fuel filters
- Algae X fuel conditioning system



- Copper supply and return fuel lines with approved flexible hose and ss clamps
- Hurth hydraulic transmission
- 1 1/2" ss shaft
- Maxprop 3-bladed propeller
- Sidepower 24 v bow thruster
- 1 x 24 v electric bilge pump with both automatic float and manual switches
- 2 x Whale Gusher manual bilge pumps, one operated from cockpit, one operated from main salon
- Bronze seacock with bronze strainer for cooling engine
- Engine room blower

#### Air Conditioning:

- 1 16000 BTU Cruisair unit in main salon with electronic control.
- 1 10,000 BTU Marineair unit in aft stateroom with electronic control
- 1 9,000 BTU Marineair unit in forward stateroom with electronic control
- All units are reverse cycle, offering heat and air conditioning

#### TANKAGE - FUEL

- One molded FRP fuel tank integral to the hull located under the starboard side of the main salon, approx. capacity 149 galls.
- 2 Large easily accessible inspection ports

#### PLUMBING - WATER

- 2 poly plastic water tanks, 179 total capacity
- 2 large easily accessible inspection ports
- 12 v Jabsco on demand freshwater pump
- 12 gallon hot water heater, 110v and engine heat exchanger
- Water temperature indicator when water is hot in the water heater
- Forward: Groco manual head. Waste can be diverted overboard or to holding tank approx. 20 galls., gravity drained overboard.
- Tank level indicator for forward holding tank
- Aft: Raritan electric 24v head runs directly Electro Scan MSD Type 1
- Whale Gulper pumps, 24v to empty shower pans and sink basins

#### ADDITIONAL

- Many spare parts
- Custom Oyster tool kit

---

## Hull and Deck

---

## HULL

- Solid fiberglass hull with fin keel and skeg hung rudder.
- Exterior Awlgrip hull paint is Aristo Blue
- Cast lead fin keel with bulb through bolted with ss bolts
- Hull to deck joint is through bolted every 6" and fiberglassed
- Cored fiberglass crash bulkhead aft of chain locker

## DECK

- Cored fiberglass deck
- Teak decks epoxied down in good condition!
- Lewmar 2000 vertical windlass with chain/rope gypsy and capstan
- 60 lb CQR with 300' of 1/2" chain
- 66 lbs. Claw anchor 20' 3/8" chain and 200' nylon rode
- Fortress FX 48 with 5/8" three strand nylon rode
- Whitlock pedestal with ss destroyer wheel
- Double scale inclinometer
- Chain to cable type steering
- Aluminum slotted toe rail
- 12 opening Lewmar port lights
- 4 Lewmar deck hatches
- Two rows of ss cable lifelines, swaged fittings,
- Port and starboard boarding gates
- 6 cast aluminum open chocks in toe rail
- 6 cast aluminum mooring cleats through bolted to deck
- Dinghy davits, stainless steel, manually operated
- Stainless steel grab rails, port and starboard on cabin top
- Magma propane barbecue
- Anchor/deck salt-water washdown
- Docklines, fenders and spare line
- Walker Bay Genesis 11'2" RIB - **New 2011**
- Nissan 15HP 4 stroke outboard engine, electric start with battery- **New 2011**

## Mast, Sails and Rigging

---

### Quantum sails

- Mainsail, triple stitched
- Genoa, 150% double stitched with white canvas UV strip
- Asymmetrical spinnaker in sock
- Storm jib

## Mast and Rigging

- Hood Inmast Furling system - manual
- Hood Seafurl headsail furling system
- Double spreader rig
- Aluminum spinnaker pole mounted on mast
- Shrouds and stays - 1 x 19 ss wire
- Boom vang
- 14 rope clutches

## Winches, Harken

- 2 electric #56 primaries
- 1 x #32
- 3 x #40

Vessel sail handling hardware is by Lewmar

## Canvas

---

- Dodger & Bimini
- Canvas & clear plastic full cockpit enclosure with connector
- Second set of screened cockpit enclosure
- Full set of cockpit cushions
- Pedestal cover and winch covers
- Cover for barbecue

## Safety and Fire Protection

---

- Beaufort Swiftsure 6 person liferaft in a valise (requires current certification)
- Lifesling MOB system
- MOB modular throw line
- 6 USCG Type I PFDs with attached strobes
- Lifesling USCGT approved Type IV throwable device
- ACR Global Fix 406 EPIRB - New battery **2011**
- Firdell Blipper radar reflector
- Smoke detectors and CO detectors
- Bilge water alarm and safety switches
- Fireboy fixed fire extinguisher system
- 3 USCG approved dry chemical fire extinguishers
- First Aid kit
- Searchlight
- Fireboy Xintex CO detectors

- Current flare kit

## Closing Remarks

---

**Night Swan** has had only two owners and been exceptionally well maintained by both of them. She has only been sailed in US waters and does not show the wear and tear for her age. The owner is motivated to sell and appreciates any and all offers.

## Исключения

---

При продаже яхты исключаются личные вещи владельца.

## Отказ от ответственности

---

Компания предоставляет описание судна или яхты добросовестно, но не может гарантировать точность этой информации, а также не ручается за техническое состояние. Покупатель должен проинструктировать своих агентов или оценщиков исследовать представленную информацию более подробно, по собственному желанию. Продажа судна или яхты, изменение цены или снятие с продажи будет происходить без предварительного уведомления.

# ФОТОГРАФИИ

**Salon Looking Aft to Starboard Side**



**Salon looking aft to Port Side**



**Salon Port Side**



**Salon Dining**



**Salon, Starboard Settee**



**Nav Station**



**Companionway Steps**



**Galley**



**Galley Stove**



**Owner's Stateroom**





**Forward Guest Cabin**



**Forward Head**



**Forward Guest Cabin**



**Cockpit**

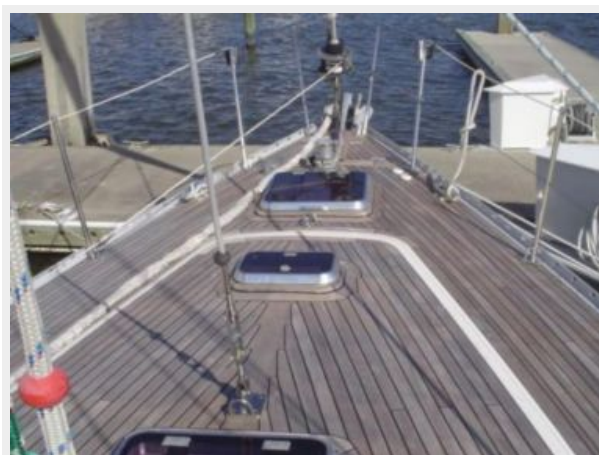


## Deck

### Electric Headsail Winch



## Foredeck





# КОНТАКТЫ

---

Андрей Шестаков (Andrey Shestakov) – ведущий яхтенный брокер отдела продаж яхт и судов компании Shestakov Yacht Sales Inc. Официальный представитель Shestakov Yacht Sales Inc. для русскоговорящих клиентов в центральном офисе компании в Майами/Форт Лодердейл/Флорида/США.

## Контактная информация

---

Email: [andrey@shestakovyachtsales.com](mailto:andrey@shestakovyachtsales.com)

Web: [shestakovyachtsales.com](http://shestakovyachtsales.com)

## Телефоны

---

Краснодарский край: **+7(918)465-66-44**

США, Майами, Флорида: **+1(954)274-4435**

## Время работы

---

Понедельник – Суббота: **9:00 - 21:00**  
EDT

Воскресенье: **Закрито**

## Адрес

---



Harbour Towne Marina, 850 NE 3rd St,  
STE 213, Dania, FL 33004