

SAND DOLLAR — LITTLE HARBOR



Builder: LITTLE HARBOR

Year Built: 1996

Model: Performance Sailboat

Price: PRICE ON APPLICATION

Location: United States

LOA: 51' 0" (15.54m)

Beam: 15' 2" (4.62m)

Min Draft: 6' 0" (1.83m)

Max Draft: 13' 6" (4.11m)

Cruise Speed: 8 Kts. (9 MPH)

Max Speed: 9 Kts. (10 MPH)

Our experienced yacht broker, Andrey Shestakov, will help you choose and buy a yacht that best suits your needs **Sand Dollar — LITTLE HARBOR** from our catalogue. Presently, at Shestakov Yacht Sales Inc., we have a wide variety of yachts available on our sale's list. We also work in close contact with all the big yacht manufacturers from all over the world.

If you would like to buy a yacht **Sand Dollar — LITTLE HARBOR** or would like help answering any questions concerning purchasing, selling or chartering a yacht, please call **+1(954)274-4435**

TABLE OF CONTENTS

TABLE OF CONTENTS	2
SPECIFICATIONS	5
Overview	5
Basic Information	5
Dimensions	5
Speed, Capacities and Weight	5
Accommodations	6
Hull and Deck Information	6
Engine Information	6
DETAILED INFORMATION	7
51' Little Harbor Overview	7
51' Little Harbor Vessel Walkthrough	7
51' Little Harbor Accommodations	7
51' Little Harbor Salon	7
51' Little Harbor Dining	7
51' Little Harbor Galley	7
51' Little Harbor Master Stateroom	8
51' Little Harbor Guest Stateroom	8
51' Little Harbor Pilothouse	8
51' Little Harbor Cockpit	8
51' Little Harbor Audio And Visual Equipment	8
51' Little Harbor Electronics and Navigational Equipment	9
51' Little Harbor Electrical System	9
51' Little Harbor Engine /Mechanical Equipment	9
51' Little Harbor Deck Equipment	10
51' Little Harbor Sails and Rigging	10
51' Little Harbor Safety And Fire Protection	11
51' Little Harbor Exclusions	11

Exclusions	11
Disclaimer	11
PHOTOS	12
51' Little Harbor starboard profile	12
51' Little Harbor port forward profile	12
51' Little Harbor anchor windlass	12
51' Little Harbor port aft profile	12
51' Little Harbor foredeck	13
51' Little Harbor foredeck aft	13
51' Little Harbor port side deck	13
51' Little Harbor cockpit forward	13
51' Little Harbor cockpit aft	13
51' Little Harbor cockpit port	13
51' Little Harbor cockpit starboard	14
51' Little Harbor swimplatform	14
51' Little Harbor pilothouse forward	14
51' Little Harbor pilothouse aft	14
51' Little Harbor pilothouse port	14
51' Little Harbor pilothouse starboard	14
51' Little Harbor salon forward	15
51' Little Harbor salon aft	15
51' Little Harbor salon port forward seating	15
51' Little Harbor salon starboard seating1	15
51' Little Harbor salon starboard seating2	15
51' Little Harbor salon starboard seating3	15
51' Little Harbor galley1	16
51' Little Harbor galley2	16
51' Little Harbor galley refrigerator	16
51' Little Harbor galley freezer	16

51' Little Harbor master stateroom1	16
51' Little Harbor master stateroom2	16
51' Little Harbor master stateroom head	17
51' Little Harbor master stateroom shower	17
51' Little Harbor guest stateroom head	17
51' Little Harbor guest stateroom	17
51' Little Harbor engine room aft	18
51' Little Harbor main engine1	18
51' Little Harbor main engine2	18
51' Little Harbor gearbox	18
51' Little Harbor electrical panel	18
51' Little Harbor water heater	18
51' Little Harbor generator panel	19
51' Little Harbor generator1	19
51' Little Harbor generator2	19
51' Little Harbor layout	19
CONTACTS	20
Contact details	20
Telephones	20
Office hours	20
Address	20

SPECIFICATIONS

Overview

Sand Dollar is a well maintained, US built 51' Little Harbor performance cruiser in turn-key condition. From her long waterline length to her moderate wetted surface to her powerful sail plan, she offers very good performance. She is a good option for short handed operations and her spacious, classic interior offers comfort and a light, open feel. Designed and built by the world renowned Ted Hood, and very carefully spec'd by her owner, Sand Dollar is a great opportunity to own a well-respected, well-maintained classic performance cruiser. Price reduced!

Basic Information

Category: Performance Sailboat

Sub Category: Cruising Sailboat

Model Year: 1996

Year Built: 1996

Country: United States

Coast Guard #: 1041572/Newport, RI

Vessel Top: Hardtop

Dimensions

LOA: 51' 0" (15.54m)

LWL: 41' 2" (12.55m)

Beam: 15' 2" (4.62m)

Min Draft: 6' 0" (1.83m)

Max Draft: 13' 6" (4.11m)

Clearance: 72' 10" (22.20m)

Speed, Capacities and Weight

Cruise Speed: 8 Kts. (9 MPH)

Max Speed: 9 Kts. (10 MPH)

Displacement: 51000 Pounds

Gross Tonnage: 28 Pounds

Water Capacity: 400 Gallons

Holding Tank: 33 Gallons

Fuel Capacity: 200 Gallons

Accommodations

Total Cabins: 2

Total Berths: 4

Sleeps: 6

Total Heads: 2

Hull and Deck Information

Hull Material: Composite

Deck Material: Composite Fiberglass

Hull Color: Dark Green

Hull Finish: Fiberglass

Hull Designer: Ted Hood

Engine Information

Engines: 1

Manufacturer: Yanmar

Model: 4LH-TE

Engine Type: Inboard

Fuel Type: Diesel

DETAILED INFORMATION

51' Little Harbor Overview

Sand Dollar is a well maintained, US built 51' Little Harbor performance cruiser in turn-key condition. From her long waterline length to her moderate wetted surface to her powerful sail plan, she offers very good performance. She is a good option for short handed operations and her spacious, classic interior offers comfort and a light, open feel. Designed and built by the world renowned Ted Hood, and very carefully spec'd by her owner, Sand Dollar is a great opportunity to own a well-respected, well-maintained classic performance cruiser. Price reduced!

51' Little Harbor Vessel Walkthrough

From the aft cockpit, one walks through the pilothouse and down the companionway to the large salon with the galley to starboard, wrap around seating and table starboard forward, guest stateroom port aft, benchseat/berth port forward and the master stateroom all the way forward. The engine room is accessed through the guest head.

51' Little Harbor Accommodations

There is a master stateroom forward with ensuite head and a guest stateroom aft with over/under bunks and ensuite head.

51' Little Harbor Salon

The large salon offers wrap around seating and teak table to starboard, galley starboard aft, benchseat/berth port forward, 5 portlights and two overhead hatches for plenty of natural light and ventilation and Teak & Holley sole.

51' Little Harbor Dining

Dining is offered at the salon table with wrap around seating, pilothouse double pedestal teak table and cockpit folding teak table.

51' Little Harbor Galley

The galley is located starboard aft in the salon and offers ample countertop space, Teak & Holley sole, storage drawers, cabinets and dry storage.

- GE Microwave
- Force 10 4-burner gas cooktop and oven
- Double stainless steel sink
- Grunert cold plate side loading refrigerator and top loading 7 cu ft freezer with secondary engine driven compressor

51' Little Harbor Master Stateroom

Sand Dollar offers a master stateroom forward with a very large V-berth. There are two large hanging lockers, storage drawers and shelves, 2 portlights and overhead deck hatch for plenty of natural light and ventilation, ensuite head with a separate shower, Teak & Holley sole and reading lights.

51' Little Harbor Guest Stateroom

The guest stateroom is located to port and aft of the salon with an ensuite head, over/under bunks, night stand with drawers and hanging locker.

51' Little Harbor Pilothouse

The low profile pilothouse offers an electronics station port forward, benchseats both sides with a double pedestal Teak table to port, chart countertop starboard forward, Eisenglass aft, windows on the sides and forward and three overhead hatches.

51' Little Harbor Cockpit

The large aft cockpit offers an Edson helm, seating, with storage underneath, on each side and aft and a Bimini.

51' Little Harbor Audio And Visual Equipment

- Panasonic Omnivision TV/VHS in salon
- Alpine CDE-7822 AM/FM/CD player in salon

51' Little Harbor Electronics and Navigational Equipment

- Icom IC-M710 SSB
- Robertson AP300X autopilot
- Dataline X Multi Function System
- Shipmate RS8300 VHF
- Anritsu RA770ua Radar
- Ritchie Powerdamp magnetic compass
- Harwich ship's clock and barometer

51' Little Harbor Electrical System

- 6 kW Fischer Panda generator with 336 hours
- Freedom 20 inverter/charger
- 12vdc/120vac electrical system
- Two house battery banks, start battery and bowthruster battery
- 135 amp alternator
- 50' 50 amp shore chord

51' Little Harbor Engine /Mechanical Equipment

- Upgraded 160 hp Yanmar main engine with 100 hours
- Racor 500FG fuel filters for main engine and generator
- Groco sea strainer and thru-hulls
- Navtec engine control
- Borg Warner gearbox
- Wesmar bowthruster
- Tankwatch III tank level monitor system
- Marinair reverse cycle air conditioning system

- Atlantic 12 gallon stainless steel water heater
- 18" X 24" 3-blade Max prop
- 1 1/2" Aquamet 22 shaft
- PSS dripless shaft seal

51' Little Harbor Deck Equipment

- Maxwell VWC2200 anchor windlass
- 65 lb Bruce anchor
- 55 lb Fortress anchor
- 250' 5/16" anchor chain
- Dual stainless steel anchor roller
- Stainless seat rails aft and lifelines with stainless steel stanchions each side and forward
- Non-skid decks
- Varnished teak cap rails with covers
- Swim ladder
- Hot and cold shower on swimplatform
- Lewmar deck hatches

51' Little Harbor Sails and Rigging

- Hood Stoway furling mast
- Roller furling headsail
- Navtec hydraulic backstay and boom vang
- Navtec rod rigging
- Solbert Spectra in-mast mainsail
- Solbert Spectra 130% furling headsail

-
- Solbert 100% hank on staysail
 - Harken 3-speed electric ST primaries and secondaries
 - Harken 48 electric ST mainsheet and ST outhaul
 - Harken 42 mMin halyard winch and Genoa ST winch

51' Little Harbor Safety And Fire Protection

- Par 10.8 gpm bilge pump
- Whale Gusher manula bilge pump
- Zodiac 6pax liferaft
- Boss gas control panel in galley
- Horseshoe lifering and lifejackets

51' Little Harbor Exclusions

Seller's personal belongings

Exclusions

Owner's personal belongings.

Disclaimer

The Company offers the details of this vessel or yacht in good faith but cannot guarantee or warrant the accuracy of this information nor warrant the condition of the vessel. A buyer should instruct his representatives, agents, or his surveyors, to investigate such details as the buyer desires validated. This vessel or yacht is offered subject to prior sale, price change, or withdrawal without notice.

PHOTOS

51' Little Harbor starboard profile



51' Little Harbor port forward profile



51' Little Harbor port aft profile



51' Little Harbor anchor windlass



51' Little Harbor foredeck



51' Little Harbor foredeck aft



51' Little Harbor port side deck



51' Little Harbor cockpit forward



51' Little Harbor cockpit aft



51' Little Harbor cockpit port



51' Little Harbor cockpit starboard



51' Little Harbor swimplatform



51' Little Harbor pilothouse forward



51' Little Harbor pilothouse aft



51' Little Harbor pilothouse port



51' Little Harbor pilothouse starboard



51' Little Harbor salon forward



51' Little Harbor salon aft



51' Little Harbor salon port forward seating



51' Little Harbor salon starboard seating1



51' Little Harbor salon starboard seating2



51' Little Harbor salon starboard seating3



51' Little Harbor galley1



51' Little Harbor galley2



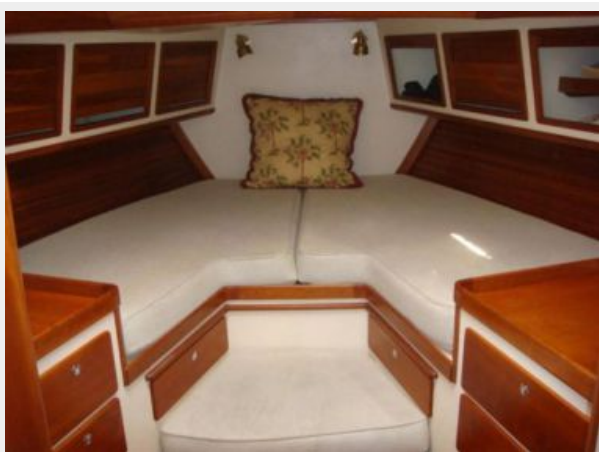
51' Little Harbor galley refrigerator



51' Little Harbor galley freezer



51' Little Harbor master stateroom1



51' Little Harbor master stateroom2



51' Little Harbor master stateroom head



51' Little Harbor master stateroom shower



51' Little Harbor guest stateroom head

51' Little Harbor guest stateroom



51' Little Harbor engine room aft



51' Little Harbor main engine1



51' Little Harbor main engine2



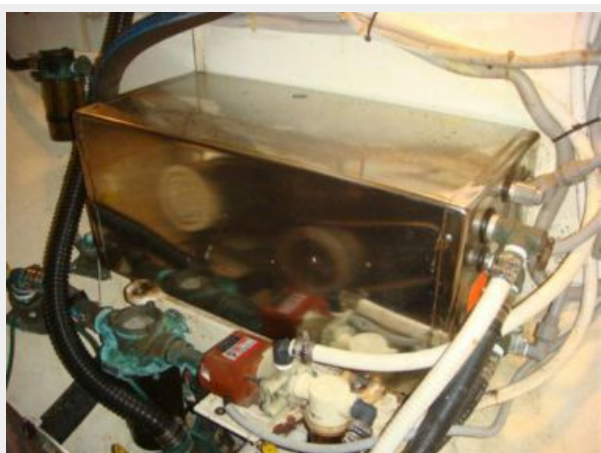
51' Little Harbor gearbox



51' Little Harbor electrical panel



51' Little Harbor water heater



51' Little Harbor generator panel



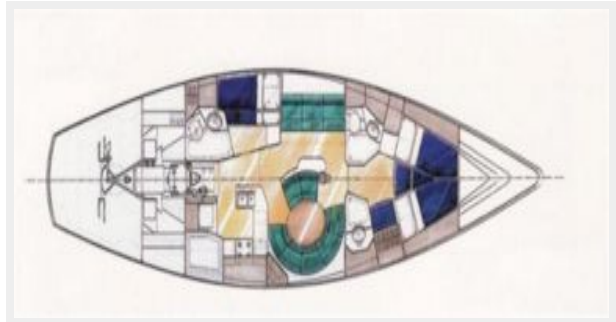
51' Little Harbor generator1



51' Little Harbor generator2



51' Little Harbor layout



CONTACTS

Andrey Shestakov, leading yacht broker of the sales department of Shestakov Yacht Sales Inc. Shestakov Yacht Sales Inc., the official representative of the Miami/Fort Lauderdale FL headquarters.

Contact details

Email: andrey@shestakovyachtsales.com

Web: shestakovyachtsales.com/en/

Telephones

USA: +1(954)274-4435

Office hours

Monday – Saturday: **9:00 - 21:00** EDT

Sunday: **closed**

Address



Harbour Towne Marina, 850 NE 3rd St,
STE 213, Dania, FL 33004