

## SAND DOLLAR — LITTLE HARBOR



**Судостроитель:** LITTLE HARBOR

**Год постройки:** 1996

**Модель:** Представительская парусная яхта

**Цена:** ЦЕНА ЯХТЫ ПО ЗАПРОСУ

**Местонахождение:** United States

**Длина общая:** 51' 0" (15.54m)

**Ширина:** 15' 2" (4.62m)

**Мин. осадка:** 6' 0" (1.83m)

**Макс. осадка:** 13' 6" (4.11m)

**Крейс. скорость:** 8 Kts. (9 MPH)

**Макс. скорость:** 9 Kts. (10 MPH)

Купить Sand Dollar — LITTLE HARBOR а также выбрать подходящую вам яхту из нашего каталога яхт вам поможет опытный яхтенный брокер Андрей Шестаков. На сегодняшний день компания Shestakov Yacht Sales Inc. имеет большое количество яхт в собственном списке продаж, а также тесно сотрудничает со всеми крупными яхтенными производителями по всему миру.

Для того чтобы купить яхту Sand Dollar — LITTLE HARBOR а также проконсультироваться по любому вопросу связанному с покупкой, продажей, чартером яхт позвоните по телефону **+7(918)465-66-44**.

# ОГЛАВЛЕНИЕ

---

ОГЛАВЛЕНИЕ	2
ХАРАКТЕРИСТИКИ	5
Обзор	5
Основная информация	5
Размеры	5
Скорость, вместимость и масса	5
Размещение	6
Корпус и палуба	6
Информация о двигателе	6
ПОДРОБНОЕ ОПИСАНИЕ	7
51' Little Harbor Overview	7
51' Little Harbor Vessel Walkthrough	7
51' Little Harbor Accommodations	7
51' Little Harbor Salon	7
51' Little Harbor Dining	7
51' Little Harbor Galley	7
51' Little Harbor Master Stateroom	8
51' Little Harbor Guest Stateroom	8
51' Little Harbor Pilothouse	8
51' Little Harbor Cockpit	8
51' Little Harbor Audio And Visual Equipment	8
51' Little Harbor Electronics and Navigational Equipment	9
51' Little Harbor Electrical System	9
51' Little Harbor Engine /Mechanical Equipment	9
51' Little Harbor Deck Equipment	10
51' Little Harbor Sails and Rigging	10
51' Little Harbor Safety And Fire Protection	11
51' Little Harbor Exclusions	11

Исключения	11
Отказ от ответственности	11
<b>ФОТОГРАФИИ</b>	<b>12</b>
51' Little Harbor starboard profile	12
51' Little Harbor port forward profile	12
51' Little Harbor anchor windlass	12
51' Little Harbor port aft profile	12
51' Little Harbor foredeck	13
51' Little Harbor foredeck aft	13
51' Little Harbor port side deck	13
51' Little Harbor cockpit forward	13
51' Little Harbor cockpit aft	13
51' Little Harbor cockpit port	13
51' Little Harbor cockpit starboard	14
51' Little Harbor swimplatform	14
51' Little Harbor pilothouse forward	14
51' Little Harbor pilothouse aft	14
51' Little Harbor pilothouse port	14
51' Little Harbor pilothouse starboard	14
51' Little Harbor salon forward	15
51' Little Harbor salon aft	15
51' Little Harbor salon port forward seating	15
51' Little Harbor salon starboard seating1	15
51' Little Harbor salon starboard seating2	15
51' Little Harbor salon starboard seating3	15
51' Little Harbor galley1	16
51' Little Harbor galley2	16
51' Little Harbor galley refrigerator	16
51' Little Harbor galley freezer	16

---

51' Little Harbor master stateroom1	16
51' Little Harbor master stateroom2	16
51' Little Harbor master stateroom head	17
51' Little Harbor master stateroom shower	17
51' Little Harbor guest stateroom head	17
51' Little Harbor guest stateroom	17
51' Little Harbor engine room aft	18
51' Little Harbor main engine1	18
51' Little Harbor main engine2	18
51' Little Harbor gearbox	18
51' Little Harbor electrical panel	18
51' Little Harbor water heater	18
51' Little Harbor generator panel	19
51' Little Harbor generator1	19
51' Little Harbor generator2	19
51' Little Harbor layout	19
<b>КОНТАКТЫ</b>	<b>20</b>
Контактная информация	20
Телефоны	20
Время работы	20
Адрес	20

# ХАРАКТЕРИСТИКИ

## Обзор

Sand Dollar is a well maintained, US built 51' Little Harbor performance cruiser in turn-key condition. From her long waterline length to her moderate wetted surface to her powerful sail plan, she offers very good performance. She is a good option for short handed operations and her spacious, classic interior offers comfort and a light, open feel. Designed and built by the world renowned Ted Hood, and very carefully spec'd by her owner, Sand Dollar is a great opportunity to own a well-respected, well-maintained classic performance cruiser. Price reduced!

## Основная информация

**Тип судна:** Представительская парусная яхта **Подкатегория:** Крейсерская яхта

**Модельный год:** 1996

**Год постройки:** 1996

**Страна:** United States

**Номер регистрации в береговой охране:** 1041572/Newport, RI

**Верх:** Hardtop

## Размеры

**Длина общая:** 51' 0" (15.54m)

**Длина по ватерлинии:** 41' 2" (12.55m)

**Ширина:** 15' 2" (4.62m)

**Мин. осадка:** 6' 0" (1.83m)

**Макс. осадка:** 13' 6" (4.11m)

**Трапы:** 72' 10" (22.20m)

## Скорость, вместимость и масса

**Крейс. скорость:** 8 Kts. (9 MPH)

**Макс. скорость:** 9 Kts. (10 MPH)

**Водоизмещение:** 51000 Pounds

**Чистый вес:** 28 Pounds

**Вместимость воды:** 400 Gallons

**Вместимость сточного бака:** 33 Gallons

**Объем топливного бака:** 200 Gallons

## Размещение

---

Всего кают: 2

Всего коек: 4

Спальные места: 6

Всего ком. состава: 2

## Корпус и палуба

---

Материал корпуса: Composite

Материал палубы: Composite Fiberglass

Цвет корпуса: Dark Green

Отделка корпуса: Fiberglass

Дизайнер корпуса: Ted Hood

## Информация о двигателе

---

Двигатели: 1

Производитель: Yanmar

Модель: 4LH-TE

Тип двигателя: Inboard

Тип топлива: Diesel

---

# ПОДРОБНОЕ ОПИСАНИЕ

---

---

## 51' Little Harbor Overview

---

Sand Dollar is a well maintained, US built 51' Little Harbor performance cruiser in turn-key condition. From her long waterline length to her moderate wetted surface to her powerful sail plan, she offers very good performance. She is a good option for short handed operations and her spacious, classic interior offers comfort and a light, open feel. Designed and built by the world renowned Ted Hood, and very carefully spec'd by her owner, Sand Dollar is a great opportunity to own a well-respected, well-maintained classic performance cruiser. Price reduced!

---

## 51' Little Harbor Vessel Walkthrough

---

From the aft cockpit, one walks through the pilothouse and down the companionway to the large salon with the galley to starboard, wrap around seating and table starboard forward, guest stateroom port aft, benchseat/berth port forward and the master stateroom all the way forward. The engine room is accessed through the guest head.

---

## 51' Little Harbor Accommodations

---

There is a master stateroom forward with ensuite head and a guest stateroom aft with over/under bunks and ensuite head.

---

## 51' Little Harbor Salon

---

The large salon offers wrap around seating and teak table to starboard, galley starboard aft, benchseat/berth port forward, 5 portlights and two overhead hatches for plenty of natural light and ventilation and Teak & Holley sole.

---

## 51' Little Harbor Dining

---

Dining is offered at the salon table with wrap around seating, pilothouse double pedestal teak table and cockpit folding teak table.

---

## 51' Little Harbor Galley

---

The galley is located starboard aft in the salon and offers ample countertop space, Teak & Holley sole, storage drawers, cabinets and dry storage.

- GE Microwave
- Force 10 4-burner gas cooktop and oven
- Double stainless steel sink
- Grunert cold plate side loading refrigerator and top loading 7 cu ft freezer with secondary engine driven compressor

---

## 51' Little Harbor Master Stateroom

---

Sand Dollar offers a master stateroom forward with a very large V-berth. There are two large hanging lockers, storage drawers and shelves, 2 portlights and overhead deck hatch for plenty of natural light and ventilation, ensuite head with a separate shower, Teak & Holley sole and reading lights.

---

## 51' Little Harbor Guest Stateroom

---

The guest stateroom is located to port and aft of the salon with an ensuite head, over/under bunks, night stand with drawers and hanging locker.

---

## 51' Little Harbor Pilothouse

---

The low profile pilothouse offers an electronics station port forward, benchseats both sides with a double pedestal Teak table to port, chart countertop starboard forward, Eisenglass aft, windows on the sides and forward and three overhead hatches.

---

## 51' Little Harbor Cockpit

---

The large aft cockpit offers an Edson helm, seating, with storage underneath, on each side and aft and a Bimini.

---

## 51' Little Harbor Audio And Visual Equipment

---

- Panasonic Omnivision TV/VHS in salon
- Alpine CDE-7822 AM/FM/CD player in salon



---

## 51' Little Harbor Electronics and Navigational Equipment

---

- Icom IC-M710 SSB
- Robertson AP300X autopilot
- Dataline X Multi Function System
- Shipmate RS8300 VHF
- Anritsu RA770ua Radar
- Ritchie Powerdamp magnetic compass
- Harwich ship's clock and barometer

---

## 51' Little Harbor Electrical System

---

- 6 kW Fischer Panda generator with 336 hours
- Freedom 20 inverter/charger
- 12vdc/120vac electrical system
- Two house battery banks, start battery and bowthruster battery
- 135 amp alternator
- 50' 50 amp shore chord

---

## 51' Little Harbor Engine /Mechanical Equipment

---

- Upgraded 160 hp Yanmar main engine with 100 hours
- Racor 500FG fuel filters for main engine and generator
- Groco sea strainer and thru-hulls
- Navtec engine control
- Borg Warner gearbox
- Wesmar bowthruster
- Tankwatch III tank level monitor system
- Marinair reverse cycle air conditioning system

- Atlantic 12 gallon stainless steel water heater
- 18" X 24" 3-blade Max prop
- 1 1/2" Aquamet 22 shaft
- PSS dripless shaft seal

## 51' Little Harbor Deck Equipment

---

- Maxwell VWC2200 anchor windlass
- 65 lb Bruce anchor
- 55 lb Fortress anchor
- 250' 5/16" anchor chain
- Dual stainless steel anchor roller
- Stainless seat rails aft and lifelines with stainless steel stanchions each side and forward
- Non-skid decks
- Varnished teak cap rails with covers
- Swim ladder
- Hot and cold shower on swimplatform
- Lewmar deck hatches

## 51' Little Harbor Sails and Rigging

---

- Hood Stoway furling mast
- Roller furling headsail
- Navtec hydraulic backstay and boom vang
- Navtec rod rigging
- Solbert Spectra in-mast mainsail
- Solbert Spectra 130% furling headsail

- Solbert 100% hank on staysail
- Harken 3-speed electric ST primaries and secondaries
- Harken 48 electric ST mainsheet and ST outhaul
- Harken 42 mMin halyard winch and Genoa ST winch

## 51' Little Harbor Safety And Fire Protection

---

- Par 10.8 gpm bilge pump
- Whale Gusher manula bilge pump
- Zodiac 6pax liferaft
- Boss gas control panel in galley
- Horseshoe lifering and lifejackets

## 51' Little Harbor Exclusions

---

Seller's personal belongings

## Исключения

---

При продаже яхты исключаются личные вещи владельца.

## Отказ от ответственности

---

Компания предоставляет описание судна или яхты добросовестно, но не может гарантировать точность этой информации, а также не ручается за техническое состояние. Покупатель должен проинструктировать своих агентов или оценщиков исследовать представленную информацию более подробно, по собственному желанию. Продажа судна или яхты, изменение цены или снятие с продажи будет происходить без предварительного уведомления.

# ФОТОГРАФИИ

51' Little Harbor starboard profile



51' Little Harbor port forward profile



51' Little Harbor port aft profile



51' Little Harbor anchor windlass



**51' Little Harbor foredeck**



**51' Little Harbor foredeck aft**



**51' Little Harbor port side deck**



**51' Little Harbor cockpit forward**



**51' Little Harbor cockpit aft**



**51' Little Harbor cockpit port**



**51' Little Harbor cockpit starboard**



**51' Little Harbor swimplatform**



**51' Little Harbor pilothouse forward**



**51' Little Harbor pilothouse aft**



**51' Little Harbor pilothouse port**



**51' Little Harbor pilothouse starboard**



51' Little Harbor salon forward



51' Little Harbor salon aft



51' Little Harbor salon port forward seating



51' Little Harbor salon starboard seating1



51' Little Harbor salon starboard seating2



51' Little Harbor salon starboard seating3



**51' Little Harbor galley1**



**51' Little Harbor galley2**



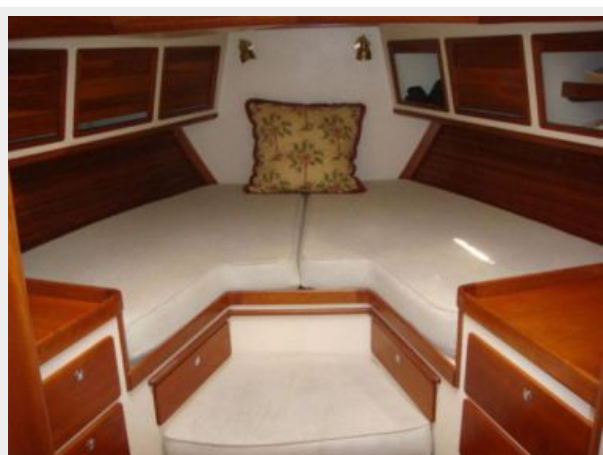
**51' Little Harbor galley refrigerator**



**51' Little Harbor galley freezer**



**51' Little Harbor master stateroom1**



**51' Little Harbor master stateroom2**





51' Little Harbor master stateroom head



51' Little Harbor master stateroom shower



51' Little Harbor guest stateroom head

51' Little Harbor guest stateroom



51' Little Harbor engine room aft



51' Little Harbor main engine1



51' Little Harbor main engine2



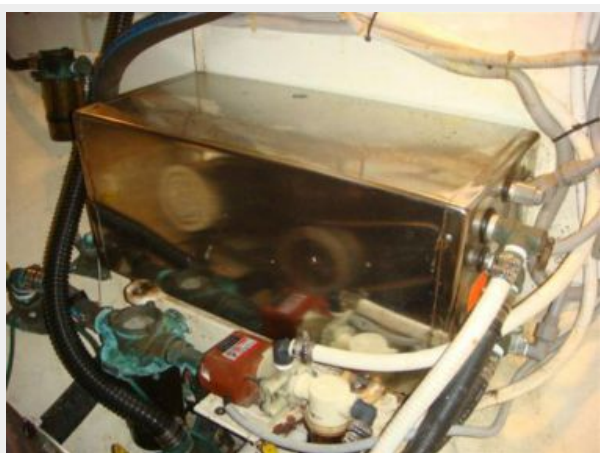
51' Little Harbor gearbox



51' Little Harbor electrical panel



51' Little Harbor water heater



51' Little Harbor generator panel



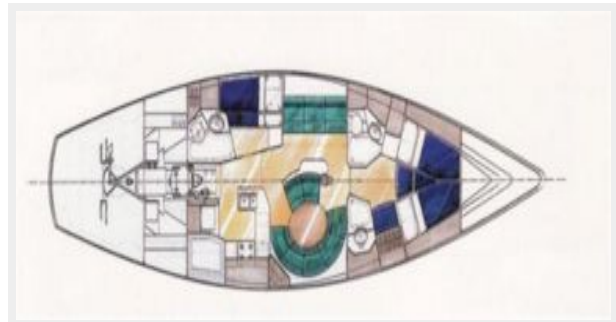
51' Little Harbor generator1



51' Little Harbor generator2



51' Little Harbor layout



# КОНТАКТЫ

---

Андрей Шестаков (Andrey Shestakov) – ведущий яхтенный брокер отдела продаж яхт и судов компании Shestakov Yacht Sales Inc. Официальный представитель Shestakov Yacht Sales Inc. для русскоговорящих клиентов в центральном офисе компании в Майами/Форт Лодердейл/Флорида/США.

## Контактная информация

---

Email: [andrey@shestakovyachtsales.com](mailto:andrey@shestakovyachtsales.com)

Web: [shestakovyachtsales.com](http://shestakovyachtsales.com)

## Телефоны

---

Краснодарский край: **+7(918)465-66-44**

США, Майами, Флорида: **+1(954)274-4435**

## Время работы

---

Понедельник – Суббота: **9:00 - 21:00**  
EDT

Воскресенье: **Закрито**

## Адрес

---



Harbour Towne Marina, 850 NE 3rd St,  
STE 213, Dania, FL 33004