

NO NAME — SEA RAY



Builder: SEA RAY

Year Built: 2008

Model: Motor Yacht

Price: PRICE ON APPLICATION

Location: United States

LOA: 47' 0" (14.33m)

Beam: 14' 9" (4.47m)

Min Draft: 4' 3" (1.27m)

Max Draft: 4' 3" (1.27m)

Cruise Speed: 24 Kts. (28 MPH)

Max Speed: 28 Kts. (32 MPH)

Our experienced yacht broker, Andrey Shestakov, will help you choose and buy a yacht that best suits your needs **No Name — SEA RAY** from our catalogue. Presently, at Shestakov Yacht Sales Inc., we have a wide variety of yachts available on our sale's list. We also work in close contact with all the big yacht manufacturers from all over the world.

If you would like to buy a yacht **No Name — SEA RAY** or would like help answering any questions concerning purchasing, selling or chartering a yacht, please call **+1(954)274-4435**

TABLE OF CONTENTS

TABLE OF CONTENTS	2
SPECIFICATIONS	3
Overview	3
Basic Information	3
Dimensions	3
Speed, Capacities and Weight	4
Accommodations	4
Hull and Deck Information	4
Engine Information	4
DETAILED INFORMATION	5
Accommodations & Key Features	5
Exclusions	7
Disclaimer	7
PHOTOS	8
CONTACTS	13
Contact details	13
Telephones	13
Office hours	13
Address	13

SPECIFICATIONS

Overview

Price Just Reduced AGAIN - End of Season Sale - Nicest 47 Bridge Available, Always in FRESH WATER - Call With an Offer!!

******Under Full Warranty until May 2012!!!******

This 2008 47' is truly one of the finest 47 Sedan Bridges on the market. Always kept in Fresh Water & stored in Heated Storage during lay up, she has been professionally maintained by the local Sea Ray dealer and pampered by her Owner. Only 2 Seasons of Use since Deployed in 2010!!

Features of this exquisitely maintained yacht include: Hydraulic Swim Platform, Bridge Air Conditioning, Bow & Stern Thrusters, DSS TV System, Dark Cherry Interior and Much More. This truly is a uniquely well maintained yacht and is a Must See!

Basic Information

Category: Motor Yacht

Sub Category: Flybridge

Model Year: 2008

Year Built: 2008

Country: United States

Cockpit: Yes

Dimensions

LOA: 47' 0" (14.33m)

Beam: 14' 9" (4.47m)

Min Draft: 4' 3" (1.27m)

Max Draft: 4' 3" (1.27m)

Speed, Capacities and Weight

Cruise Speed: 24 Kts. (28 MPH)

Max Speed: 28 Kts. (32 MPH)

Displacement: 37500 Pounds

Water Capacity: 117 Gallons

Holding Tank: 60 Gallons

Fuel Capacity: 530 Gallons

Accommodations

Total Cabins: 2

Total Heads: 2

Hull and Deck Information

Hull Material: Fiberglass

Hull Configuration: Planing

Hull Color: White

Engine Information

Engines: 2

Manufacturer: Cummins

Model: QSC-600

Engine Type: Inboard

Fuel Type: Diesel

DETAILED INFORMATION

Accommodations & Key Features

Accommodations

This 2008 47' Sea Ray Sedan Bridge is the preferred 2 Stateroom version. The spacious, open salon area has the galley aft and comfortable seating areas for entertaining or lounging.

Moving forward and down you will find the master stateroom with a large walk around berth, hanging locker and drawer storage areas, custom lighting, Flat Screen Television and a private head with a stall shower.

Further forward is the guest stateroom with a centerline berth, Flat Screen Television, hanging locker and a private entrance to the guest head with stall shower.

She is a very comfortable boat which is tastefully decorated.

Electrical / Mechanical

- Onan 17KW Generator w/ 120 Hours
- Glendenning CABLEMASTER w/ 50amp Cord
- Charles Isolation Transformer
- Pro Mariner Nautic Batt Charger
- Dual Racor Filters on Each Main
- Sea Star Power Assist Steering
- Reverso Oil Change System
- Bow & Stern Thrusters
- SeaFire FE240 Fire Suppression System

Exterior

- Hydraulic Swim Platform Dinghy Lift
- Aft Deck Shower w/ Hot & Cold Water
- Bench Seat on Aft Deck
- Fender Holders Fwd
- Windlass / Delta Anchor
- Aft Deck Stereo Control
- Transom Storage Area

- Textaline Window Cover

Flybridge

- Factory Hardtop
- Full Enclosure w/ U-Zips
- Isotherm Refrigerator
- Sink
- Dinette Seating w/ Table
- Dual Pedestal Helm Seats
- Aft Bench Seat
- Overhead Stereo Locker
- Clarion CMD5 Stereo & CD Changer

Helm

- Raymarine E120 GPS / Chartplotter
- Raymarine E120 Radar
- RayPilot ST-8002
- Ray VHF Radio
- SmartCraft
- Electronic Engine Synchronizer
- Compass

Interior Items

- Bose Speakers Throughout
- 3 Sharp Aquos LCD TV's
- Bose Lifestyle CD/DVD Surround Sound
- 2 Domestic VacuFlush Heads
- Wooden Blinds in Staterooms
- Glomex Digital TV Antenna
- KVH M3 Satellite TV System
- Roman Shades on Salon Windows
- Oceanair Shades on Aft Salon Windows

Galley

- Multiple Drawer Storage Areas
- Flush Sink
- Isotherm Refrigerator Freezer DC
- Ice maker Aft
- Opening Aft Window to Cockpit
- Tappan Convection Microwave

Exclusions

Owner's personal belongings.

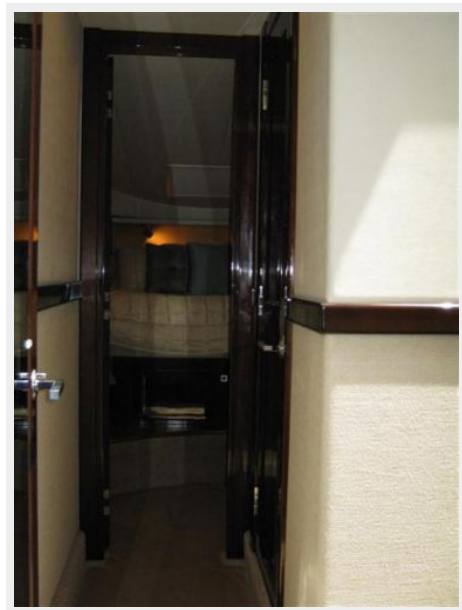
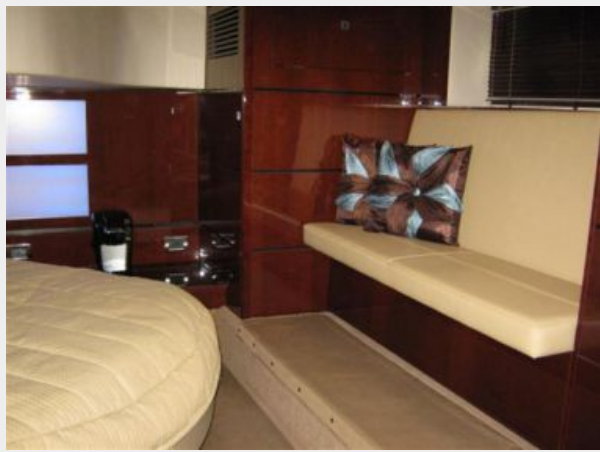
Disclaimer

The Company offers the details of this vessel or yacht in good faith but cannot guarantee or warrant the accuracy of this information nor warrant the condition of the vessel. A buyer should instruct his representatives, agents, or his surveyors, to investigate such details as the buyer desires validated. This vessel or yacht is offered subject to prior sale, price change, or withdrawal without notice.

PHOTOS











CONTACTS

Andrey Shestakov, leading yacht broker of the sales department of Shestakov Yacht Sales Inc. Shestakov Yacht Sales Inc., the official representative of the Miami/Fort Lauderdale FL headquarters.

Contact details

Email:
andrey@shestakovyachtsales.com

Web: shestakovyachtsales.com/en/

Telephones

USA: **+1(954)274-4435**

Office hours

Monday – Saturday: **9:00 - 21:00 EDT**

Sunday: **closed**

Address



Harbour Towne Marina, 850 NE 3rd St,
STE 213, Dania, FL 33004