

NO NAME — BREAUX



Судостроитель: BREAUX

Год постройки: 2002

Модель: Моторная яхта

Цена: ЦЕНА ЯХТЫ ПО ЗАПРОСУ

Местонахождение: United States

Длина общая: 85' 0" (25.91m)

Ширина: 22' 0" (6.71m)

Макс. осадка: 5' 5" (1.65m)

Купить No Name — BREAUX а также выбрать подходящую вам яхту из нашего каталога яхт вам поможет опытный яхтенный брокер Андрей Шестаков. На сегодняшний день компания Shestakov Yacht Sales Inc. имеет большое количество яхт в собственном списке продаж, а также тесно сотрудничает со всеми крупными яхтенными производителями по всему миру.

Для того чтобы купить яхту No Name — BREAUX а также проконсультироваться по любому вопросу связанному с покупкой, продажей, чартером яхт позвоните по телефону **+7(918)465-66-44**.

ОГЛАВЛЕНИЕ

ОГЛАВЛЕНИЕ	2
ХАРАКТЕРИСТИКИ	3
Основная информация	3
Размеры	3
Скорость, вместимость и масса	3
Размещение	3
Корпус и палуба	3
Информация о двигателе	4
ПОДРОБНОЕ ОПИСАНИЕ	5
Vessel Walkthrough	5
Galley/Laundry	6
Deck Equipment	6
Electronics And Navigational Equipment	7
Mechanical Equipment	7
Remarks	8
Исключения	8
Отказ от ответственности	8
ФОТОГРАФИИ	9
КОНТАКТЫ	14
Контактная информация	14
Телефоны	14
Время работы	14
Адрес	14

ХАРАКТЕРИСТИКИ

Основная информация

Тип судна: Моторная яхта

Модельный год: 2002

Год постройки: 2002

Страна: United States

Кубрик: Да

Размеры

Длина общая: 85' 0" (25.91m)

Ширина: 22' 0" (6.71m)

Макс. осадка: 5' 5" (1.65m)

Скорость, вместимость и масса

Водоизмещение: 218257.63938 Pounds Вместимость воды: 1350 Gallons

Объем топливного бака: 2000 Gallons

Размещение

Всего кают: 4

Корпус и палуба

Материал корпуса: Aluminum

Информация о двигателе

Двигатели: 2

Производитель: Caterpillar

Модель: 3412

Тип двигателя: Inboard

Тип топлива: Diesel

ПОДРОБНОЕ ОПИСАНИЕ

Vessel Walkthrough

The main access to the salon is via the Freeman Marine single panel automatic sliding glass door. Step inside and you can immediately appreciate the elegant styling of September Song's interior. The salon is bright and airy with large fixed and tinted windows with electrically actuated Roman shades, providing a great view abeam and astern. There is more than ample cabinetry, an entertainment center, a liquor cabinet, end tables and stowage cabinets along with joinery and trim work that provides elegant warmth to the ship's ambience. All are built from exquisite maple hardwoods.

Aft, to starboard is the entertainment center with an electrically actuated lift built into the TV's cabinetry. Providing the enjoyment from the KVH is a Sony Trinitron 27" color TV and also houses a Bose Audio System AM/FM/DVD, 2-ZONE system with Bose amplifier. The salon is furnished with a fabric sofa with stowage under, occasional chairs and tables and a coffee table.

The formal dining area lies to port across from a mid level day head, a built-in bar and stairway accessing staterooms below and another one up to the pilothouse. It is outfitted with a custom-built glass table top set upon matching maple pedestals. The seating is for eight and the table is secured in place for steaming in heavier seas. Outboard is an L-shaped set of cabinets for serving buffet and stowing dinnerware. Also, additional serving access is through a louvered half-door to the galley.

The **VIP stateroom** is to port with its own private access to the full head with separate shower. The guest sleep in a double island berth with night stands to port and starboard

The Full beam **master stateroom** is aft. It has a king-size pedestal bed with port and starboard night tables and an L-shaped settee. It also features dresser-styled cabinetry and his/her hanging lockers. To port is the master head compartment with lavatory and vanity and enclosed walk-in shower.

- Full Beam
- King size bed
- Beautiful Decor
- Two night stands

- L shaped settee
- His and Her closets
- Private head with walk in shower
- TV

Galley/Laundry

- Viking 4-burner electric glass top range/over, commercial duty s/s with overhead vent hood
- Viking s/s front trash compactor.
- Viking s/s front tub dishwasher
- Whirlpool side-by-side refrigerator/ freezer w/ approx 21 cu. ft
- GE Profile Series microwave/convection oven
- Krupps toaster oven
- Braun coffee maker.
- Viking 1-HP food disposal unit
- Double, deep s/s sink

Deck Equipment

The fore deck is open and features a settee notched into the forward section of the cabin house. The side deck passageways are sheltered. The main aft deck has a settee in the after section, athwart ship with a teak-grated dinette table w/ canvas cover. Aft is a step-down to the cockpit deck. There is an access door to the engine room in the forward bulkhead, centerline and access to the swim platform is through a hinged transom door to port. Swim platform has s/s grab railings.

The flying bridge pilothouse is fully enclosed with water tight doors opening onto the port and starboard wing decks. Access from below is via the stairway into the forward section of the pilothouse to starboard. The teak-rimmed wheel is center-lined and combined with a Stidd helmsman seat. There is a work station with settee to port. Below the after window in the pilothouse, lying athwart ship is a settee and dinette table. To starboard there is a stowage compartment with an enclosed refrigerator and to port is the entertainment electronics cabinet.

The exceptional custom built maple cabinetry, joinery and trim work found in the lower two levels also abounds in the pilothouse. Like the galley, the custom teak and holly adding an extra bonus feature is the inlaid Compass Rose in the center of the cabin.

Out and aft of the enclosed wheelhouse is the tender and life raft station with 5 ton hydraulic davit.

Electronics And Navigational Equipment

- 1 - 4 " Magnetic Compass
- Dell personal computer system with flat screen monitor. Computer fitted with nav software pkg.
- Closed circuit television system w/ 13" color TV and 3 remote cameras to monitor P/S engine room and aft deck.
- KVH Tracvision 4 Sat TV antenna, self tracking system. System is served by 4 Sony SATB55 Direct TV receiver units
- ICOM M-127 VHF
- ICOM M710 SSB Radio
- KVH Tracphone 252 Mini-M Imarsat Sat phone system
- Simrad EQ 42 Echo Sounder w/ 12" LCD color display
- Furuno GP-80 GPS/Plotter unit
- Furuno GP-36 GPS Plotter/DBR unit
- Simrad RA-54 Radar
- Robertson AP-22 Auto Pilot

Mechanical Equipment

- Wesman hydraulic bow thruster w/ control in pilothouse and remote sta.
- 3 - Cruise Air, 14,400 BTUs each. All fitted with SMX II controls
- 2 - 50amp 125/250 VAC shore power inlets w/ Cablemaster
- Wards Marine Service automatic power inlet parallel system w/ Phase reverse warning indicator.
- 4- 8D we cell batteries and 2 banks of (4) each 6 volt.
- 1 - Newmar PT-40CE Battery Charger
- Breaux/ visual and audible alarm monitors high bilge water
- Auto Pulse IQ-301 fire alarm system
- ACR EPIRB
- Sea Recovery 800-OAWC, 800 gallon/ day water maker
- Underwater lights in hull at transom
- Twin 3412 Caterpillar, 4 cycle twin turbo charged and after cooled developing approx. 1400 HP each @ 2300 RPM. 140(Hrs)

- Engines drive Twin Disc MG5449 hydraulic clutch reverse reduction V-drive gears. Ratio 2.44:1 driving 3-1/2 " s/s shaft.
- 2 - 40 KW Northern Lights driven by John Deere engines. Both fitted with Northern Lights hard sound shield
- Drip less shaft seals
- 2 - 41 Z 53 5-blade NIBRAL Wheels
- Racor 180MC duel fuel filtration and water separators for mains
- Remote Caterpillar analogue and digital instrumentation panels
- Gulf coast Hydraulics steering system
- Twin Disc Engine Controls - Model EC250, electric engine & transmission
- Ruud 50 Gal water heater.

Remarks

This Yacht is a one of a kind Custom made Motor Yacht with a High end fit and finish. This boat has less than 200 hrs of use still has plastic on the carpet, and a fresh new boat smell. Launched in 2003 the boat has been babied with a full time professional captain. The owner's plans have changed, and He is READY TO SELL! Bring offers!

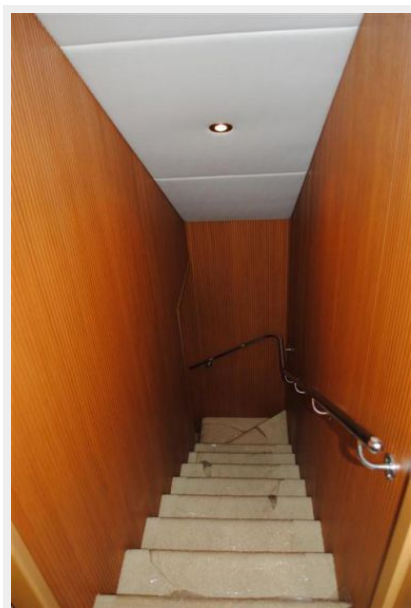
Исключения

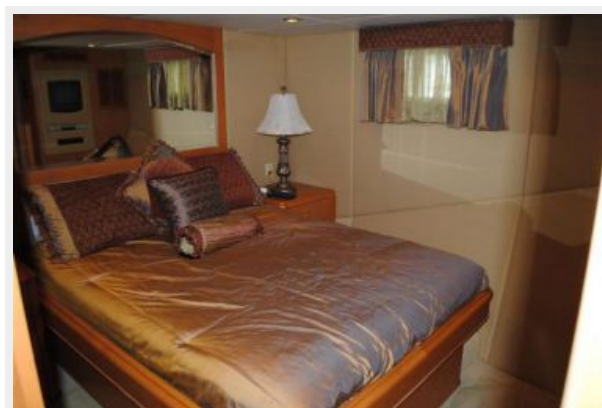
При продаже яхты исключаются личные вещи владельца.

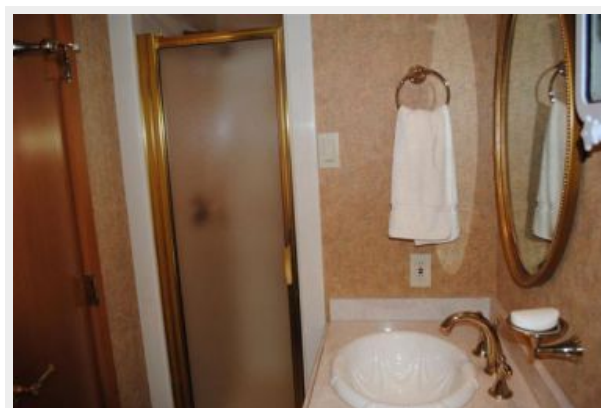
Отказ от ответственности

Компания предоставляет описание судна или яхты добросовестно, но не может гарантировать точность этой информации, а также не ручается за техническое состояние. Покупатель должен проинструктировать своих агентов или оценщиков исследовать представленную информацию более подробно, по собственному желанию. Продажа судна или яхты, изменение цены или снятие с продажи будет происходить без предварительного уведомления.

ФОТОГРАФИИ











КОНТАКТЫ

Андрей Шестаков (Andrey Shestakov) – ведущий яхтенный брокер отдела продаж яхт и судов компании Shestakov Yacht Sales Inc. Официальный представитель Shestakov Yacht Sales Inc. для русскоговорящих клиентов в центральном офисе компании в Майами/Форт Лодердейл/Флорида/США.

Контактная информация

Email: andrey@shestakovyachtsales.com

Web: shestakovyachtsales.com

Телефоны

Краснодарский край: **+7(918)465-66-44**

США, Майами, Флорида: **+1(954)274-4435**

Время работы

Понедельник – Суббота: **9:00 - 21:00**
EDT

Воскресенье: **Закрето**

Адрес



Harbour Towne Marina, 850 NE 3rd St,
STE 213, Dania, FL 33004