

JESSIE LEA — OCEAN ALEXANDER



Судостроитель: OCEAN ALEXANDER

Год постройки: 1991

Модель: Моторная яхта

Цена: **ЦЕНА ЯХТЫ ПО ЗАПРОСУ**

Местонахождение: United Kingdom

Длина общая: 57' 6" (17.53m)

Ширина: 15' 6" (4.72m)

Макс. осадка: 4' 0" (1.22m)

Крейс. скорость: 15 Kts. (17 MPH)

Макс. скорость: 18 Kts. (21 MPH)

Купить **JESSIE LEA — OCEAN ALEXANDER** а также выбрать подходящую вам яхту из нашего каталога яхт вам поможет опытный яхтенный брокер Андрей Шестаков. На сегодняшний день компания **Shestakov Yacht Sales Inc.** имеет большое количество яхт в собственном списке продаж, а также тесно сотрудничает со всеми крупными яхтенными производителями по всему миру.

Для того чтобы купить яхту **JESSIE LEA — OCEAN ALEXANDER** а также проконсультироваться по любому вопросу связанному с покупкой, продажей, чартером яхт позвоните по телефону **+7(918)465-66-44**.

ОГЛАВЛЕНИЕ

ОГЛАВЛЕНИЕ	2
ХАРАКТЕРИСТИКИ	3
Обзор	3
Основная информация	3
Размеры	3
Скорость, вместимость и масса	3
Размещение	3
Корпус и палуба	4
Информация о двигателе	4
ПОДРОБНОЕ ОПИСАНИЕ	5
SPECIFICATION	5
Исключения	13
Отказ от ответственности	13
ФОТОГРАФИИ	14
КОНТАКТЫ	19
Контактная информация	19
Телефоны	19
Время работы	19
Адрес	19

ХАРАКТЕРИСТИКИ

Обзор

With only two careful owners throughout her life, this fully stabilised motor yacht has just undergone a complete exterior repaint and looks very smart indeed, a vast saloon with open plan galley and 3 cabins enables extended periods afloat in comfort.

Основная информация

Тип судна: Моторная яхта

Модельный год: 1992

Год постройки: 1991

Страна: United Kingdom

Открытая палуба мостика: Да

Кубрик: Да

Размеры

Длина общая: 57' 6" (17.53m)

Ширина: 15' 6" (4.72m)

Макс. осадка: 4' 0" (1.22m)

Скорость, вместимость и масса

Крейс. скорость: 15 Kts. (17 MPH)

Макс. скорость: 18 Kts. (21 MPH)

Водоизмещение: 45000.75691944
Pounds

Вместимость воды: 300.363623124
Gallons

Вместимость сточного бака:
59.967055804 Gallons

Объем топливного бака: 696.621701124
Gallons

Размещение

Всего кают: 3

Всего коек: 6

Всего ком. состава: 2

Корпус и палуба

Материал корпуса: GRP

Материал палубы: GRP

Комплектация корпуса: Semi-Displacement

Отделка корпуса: Stainless Steel

Дизайнер корпуса: Ed Monk

Информация о двигателе

Двигатели: 2

Производитель: Caterpillar

Модель: 3208TA

Тип двигателя: Inboard

Тип топлива: Diesel

ПОДРОБНОЕ ОПИСАНИЕ

SPECIFICATION

Construction:

RCD Status: Our understanding is that the yacht is exempt from the essential safety requirements of Directive 94/25EC (Recreational Craft Directive) as she was built and placed into use within the EU prior to 1998.

JESSIE LEA is a moulded GRP semi-displacement hull motor yacht. She is moulded in three major sections which are: the hull, superstructure and flybridge. Large flat areas in some sections are reinforced for rigidity by sandwiching a rigid core in between layers of fiberglass, thus obtaining the desired rigidity without materially adding to the weight. The basic fiberglass sections of the boat are both mechanically and chemically bonded together to make the boat an integral unit.

Hull:

The hull section is of one piece moulded fiberglass construction. There are four moulded fiberglass longitudinal stringers bonded to the hull. Transverse bulkheads of marine plywood are fiberglass bonded in place while the hull section is still in the mould. A hull drain valve is located in the engine room to enable draining the boat when it is pulled out of the water.

- Professional Awlgrip painted in 2010.

Deck/Superstructure:

The deck/superstructure is moulded as one piece. It is fiberglass bonded and mechanically fastened to the hull section to make the two sections integral. Teak laid side decks and aft cockpit.

Flybridge:

The flybridge is also moulded as one piece, and is mechanically fastened to the superstructure.

Fittings:

All underwater through hull fittings are bronze and have sea cocks inside the boat. All through full fittings are electrically bonded to each other and connected to the boat's grounding system.

Machinery:

Engine & Gearboxes:

- 2 x Caterpillar 425hp 3208TA with twin disc MG 507-1 gearboxes.
- Raycor filters (twin filters which can be isolated or switched over as necessary)
- Glendinning automatic engine synchronisers.
- Morse dual position engine and gearbox controls.

Maintenance & Performance:

- Engine Hours – Port 1835 and Starboard 1832.
- Regular annual servicing by CAT trained engineer (last service 2010).

Propulsion & Steering:

- Michigan 4 blade Nybril propellers plus a spare set of 3 blade props on 50mm. Stainless steel shafts.
- Spur robe cutters.
- Gyro-gale quad fin pneumatic stabilizer system.
- Attema 25hp hydraulic bowthruster with dual position controls.
- Bennett trim tabs.
- Hynautic dual position steering.

Other Mechanical Equipment:

- Automatic oil drain and filler pump system for engines and generators.
- Fuel polishing system.
- Engineroom and heads blowers.

Electrical Systems:

Voltage Systems:

- 12v DC; 22v AC; 110v AC systems.
- 220v/110v ringmains throughout.

Battery Banks:

- All batteries are sealed type.
- 6 x Batteries. 950amp. Parallel switching.

Battery Chargers:

- 50amp Mastervolt battery charger.

Alternators:

- 2 x Engine alternators.

Generator:

- 2 x 12kw Northernlights generators with sound shields. 1 x 220v and 1 x 110v.

Shore Power:

- Dual external shore power connection positions for 220v and 110v.

Other Electrical:

- Full electrical panel with full AC/DC controls in pilothouse.

Plumbing Systems:*Fresh Water & Water Heating System:*

- Silent electric water pressure system.
- Hot water from 2 x calorifiers (110 litres), heated via immersion heater or Mikuni heater.

Watermaker:

- Sea Recovery 600gpd watermaker.

Bilge Pumps:

- 4 x Automatic bilge pumps.
- Manual bilge pump.

*Grey & Black Water:***Tankage:**

- Pilothouse gauges for fuel and water, plus sight gauges on tanks.

Fuel:

- 2 x Aluminium tanks. 580 gallons total.

Fresh water:

- 2 x Stainless steel tanks. 250 gallons total.

Grey/Blackwater holding tanks:

- 1 x Stainless steel tank. 40 gallons total with level indicator in pilothouse and heads.
- 1 x GRP greywater tank. 10 gallons total with automatic pump.

Navigation Equipment:

- Raymarine ST8002 Auto Pilot.
- Raymarine C Sat Nav.
- Sea-Me Radar Enhancer.
- AI3000 AIS Reciever.
- Icom M603 DSC Radio.
- Icom M1 Euro V VHF Transceiver.
- Autohelm Tridata.
- Macmudo GPS EPIRB.
- Macmudo Personal Location Beacon.
- Domestic full intercom system.
- 2 x Ships clocks.
- Yeoman plotter built into a custom teak chart table with AP. DGPS.
- SEA 322 HF/SSB.
- Echopilot forward looking sounder.
- Autohelm log, depth, speed with flybridge repeat.

Domestic Equipment:

Galley:

- AEG combi oven.
- Neff 4 burner halogen hob.
- Sharp microwave.
- Fridge and freezer.
- U Line ice maker.
- Washing machine with separate dryer.
- Euro sink with mixer taps and spray.
- Extractor fan over hob.

Heads/Showers:

- Separate shower with thermostat shower tap, washbasin with mixer taps, blower and Vacuflush toilet in owner's ensuite.
- Vacuflush toilets have separate systems, discharging to overboard or holding tank with overboard pump or pump out system.

Heating & Ventilation:

- Marineair A/C system with reverse cycle heating, 5 x units. Total output of 76000 Btu.
- Mikuni MXG 100, water heated unit, 5 x heat exchangers with thermostats and fan speed controls.

Entertainment:

- Sony TV.
- Sky Box.
- Raymarine Satellite Receiver.

Lighting:

- 12v and halogen lighting.

- Courtesy nightlights to saloon main and guest cabins.

Accommodation:

Summary of Accommodation:

- Sleeps six in owner and guest cabins (two doubles and one bunk cabin).

Description of layout from forwards:

The master stateroom is forward and features an island walk around queen berth. There is a hanging locker to port, plenty of drawer space, vanity, indirect lighting, five opening ports, one opening roof hatch, reverse cycle air conditioning with digital thermostat plus hot air heating vents, intercom system, cream curtains, bedspread and sprung mattress. The owner's en-suite is located aft to port and has a separate cubicle shower with thermostat shower, washbasin with mixer taps, blower, Vacuflush toilet, plus an A/C outlet.

Proceeding aft to starboard is the day heads with shower and WC. In the corridor aft to port is a washer dryer. Further aft to port is a double berth cabin and to starboard is a cabin with upper and lower berths, both with hanging lockers and drawer space, and both with A/C outlets, plus hot air heating vents.

The focal point of JESSIE LEA is the pilothouse which is ideal for the owner/operator who ventures offshore. The custom installed electronics are conveniently arranged, there are wing doors to the side decks port and starboard, which are ideal for shorthand mooring. It features a polished teak floor, leather settee, plus bookshelves, chart drawer, and plenty of storage cupboards and drawers. To starboard are the stairs to the flybridge. The main electrical panel is located to starboard of the helm. The pilothouse also features both A/C and heating outlets as previously described.

Aft of the pilothouse to port is the on deck open galley which features an AEG combi oven, Neff 4 burner halogen hob and a Sharp microwave. There is a fridge and freezer together with an A/C outlet as previously described. This area also features a polished teak floor. To starboard is the breakfast settee and table for four people.

The saloon has a large L shaped settee to port with teak and glass coffee table. The bar is to port with a built in U line icemaker, across to starboard is the built in entertainment centre with TV/DVD/stereo. Two barrel chairs with an end table complete this arrangement. This area has both A/C and heating outlets as previously described. All internal woodwork, wall paneling together with external doors and capping are polished teak.

Deck Equipment:

Double doors open to the aft deck, which is ideal for alfresco dining, a stainless steel ladder leads up to the upper boat deck. The aft has teak decking, with a transom door leading to the teak decked swim platform, with a stainless steel swim ladder.

Under the aft deck is a large lazarette housing the heating system and water maker, it is also ideal for storing spare warps etc.

The flybridge is ideal for lounging and entertaining and has a fully enclosed bimini, with a captains chair, L shaped settee and bench seat to starboard. The boat deck houses a Zodiac Projet rib with an electric davit, for launching and recovery.

General:

- ARC-100 duel remote control spotlight.
- 1000lbs Marquipt electric crane.
- Stainless steel swim ladder.
- Air horns.
- Teak aft cockpit and swim platform.
- Fresh and seawater deck wash down systems.
- Hand shower unit on swim platform.

Anchoring & Mooring Equipment:

- Maxwell windlass and capstan with Danforth anchor, 90m 3/8ths chain and stainless steel bow roller.

Covers, Canvas & Cushions:

- Bimini frame available.

Tender & Outboard:

- Inflatable tender.

Safety Equipment:

- 2 x Six man life raft.

Fire-fighting equipment:

- Automatic Seafire (non halon) fire extinguisher system with automatic engine electronic cut out.

Исключения

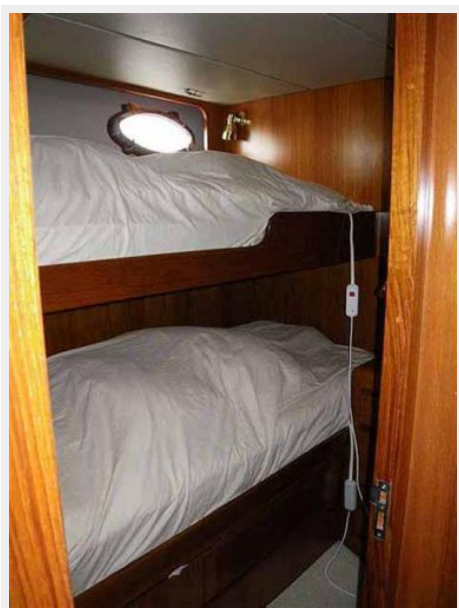
При продаже яхты исключаются личные вещи владельца.

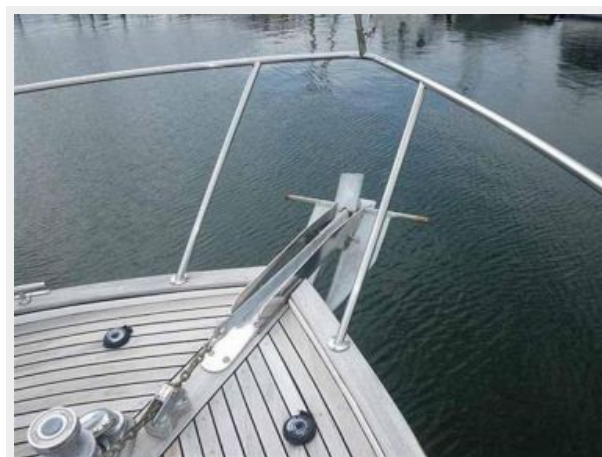
Отказ от ответственности

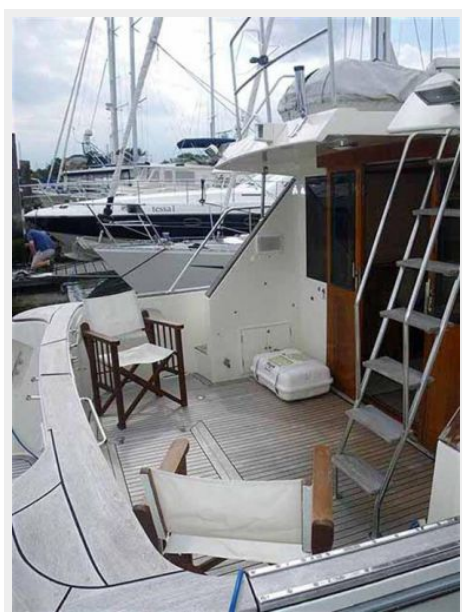
Компания предоставляет описание судна или яхты добросовестно, но не может гарантировать точность этой информации, а также не ручается за техническое состояние. Покупатель должен проинструктировать своих агентов или оценщиков исследовать представленную информацию более подробно, по собственному желанию. Продажа судна или яхты, изменение цены или снятие с продажи будет происходить без предварительного уведомления.

ФОТОГРАФИИ











КОНТАКТЫ

Андрей Шестаков (Andrey Shestakov) – ведущий яхтенный брокер отдела продаж яхт и судов компании Shestakov Yacht Sales Inc. Официальный представитель Shestakov Yacht Sales Inc. для русскоговорящих клиентов в центральном офисе компании в Майами/Форт Лодердейл/Флорида/США.

Контактная информация

Email: andrey@shestakovyachtsales.com

Web: shestakovyachtsales.com

Телефоны

Краснодарский край: **+7(918)465-66-44**

США, Майами, Флорида: **+1(954)274-4435**

Время работы

Понедельник – Суббота: **9:00 - 21:00**
EDT

Воскресенье: **Закрето**

Адрес



Harbour Towne Marina, 850 NE 3rd St,
STE 213, Dania, FL 33004