

TRADE IN — REGAL



Builder: REGAL

Year Built: 2004

Model: Cruiser

Price: PRICE ON APPLICATION

Location: United States

LOA: 35' 0" (10.67m)

Beam: 12' 2" (3.71m)

Min Draft: 3' 0" (0.91m)

Cruise Speed: 28 Kts. (32 MPH)

Max Speed: 40 Kts. (46 MPH)

Our experienced yacht broker, Andrey Shestakov, will help you choose and buy a yacht that best suits your needs **Trade In — REGAL** from our catalogue. Presently, at Shestakov Yacht Sales Inc., we have a wide variety of yachts available on our sale's list. We also work in close contact with all the big yacht manufacturers from all over the world.

If you would like to buy a yacht **Trade In — REGAL** or would like help answering any questions concerning purchasing, selling or chartering a yacht, please call **+1(954)274-4435**

TABLE OF CONTENTS

TABLE OF CONTENTS	2
SPECIFICATIONS	4
Basic Information	4
Dimensions	4
Speed, Capacities and Weight	4
Accommodations	4
Hull and Deck Information	4
Engine Information	5
DETAILED INFORMATION	6
Introduction	6
Galley	6
Salon	6
Stateroom	7
Head	7
Electronics	7
Electrical	7
Deck	7
Heating & Cooling	8
Hull	8
Other	8
Exclusions	8
Disclaimer	8
PHOTOS	9
Galley Refrigerator	9
Galley	9
Galley	9
Galley	9
Helm	9

Helm Deck	9
Helm Deck Seating	10
Helm Seating	10
Bow Stateroom	10
Aft Stateroom	10
Salon	10
Salon Sofa	10
Salon Sofa	11
Head	11
Shower	11
Head	11
Cockpit Seating	11
Aft Enclosure	11
CONTACTS	12
Contact details	12
Telephones	12
Office hours	12
Address	12

SPECIFICATIONS

Basic Information

Category: Cruiser

Sub Category: Express

Model Year: 2004

Year Built: 2004

Country: United States

Cockpit: Yes

Dimensions

LOA: 35' 0" (10.67m)

Beam: 12' 2" (3.71m)

Min Draft: 3' 0" (0.91m)

MFG Length: 38' 0" (11.58m)

Speed, Capacities and Weight

Cruise Speed: 28 Kts. (32 MPH)

Max Speed: 40 Kts. (46 MPH)

Displacement: 15200 Pounds

Water Capacity: 67 Gallons

Holding Tank: 30 Gallons

Fuel Capacity: 276 Gallons

Accommodations

Total Berths: 2

Sleeps: 4

Total Heads: 1

Hull and Deck Information

Hull Material: Fiberglass

Engine Information

Engines: 2

Manufacturer: Volvo

Model: 8.1 GI w/Duo-Props

Engine Type: I/O

Fuel Type: Gas

DETAILED INFORMATION

Introduction

DRASTIC PRICE REDUCTION TO MOVE THIS BOAT NOW!

Regal has been known for putting together a very nicely styled luxury sport cruiser and this is a fine example. She is at the top of her class in luxury and performance.

The helm deck area has great seating for you at the helm and all of your guests. With the 12'2" beam she also has plenty of interior room. The high gloss cherry cabinetry and leather upholstery is elegant and looks stunning with the highlighted teak and holly floor.

There is a large bow stateroom with an angled berth. The head is also very large and has a separate shower stall. The salon should fit the bill for all your culinary needs for the day or even an extended weekend away. There is an aft stateroom seating area that converts to another berth in addition to the seating in the salon.

With the Volvo package she cruises in the high 20's and tops out at around 40 knots.

This boat is our trade and priced to move. Don't wait, call and make this your next boat. Do it now!

Galley

- Kenyon 2-burner cooktop
- Isotherm refrigerator
- Seaward hot water heater
- U-Line ice maker
- Origo microwave

Salon

- Leatherette sofa

- Teak and holly flooring

Stateroom

- Bow master stateroom with large angled berth

Head

- Vacu-Flush head
- Holding tank
- Macerator pump out

Electronics

- Danforth compass
- Raymarine 215 VHF
- Raymarine RL-80C color GPS
- Raymarine RL-80-C radar
- Raymarine ST-60 depth sounder

Electrical

- (3) 12-volt batteries
- Vapor proof main panel master switch
- Charles 60 amp battery charger
- 2-Rule 12-volt automatic bilge pumps
- Kohler 7kw generator

Deck

- Danforth style anchor
- Stainless steel bow rail
- Swim platform w/ladder
- Electric wipers
- (2) Flush mounted rod holders
- (2) 30 amp cable connections
- Bimini and full enclosure

Heating & Cooling

- Marine Air reverse cycle air conditioning

Hull

- Black hull color
- White top sides

Other

- Kenwood stereo and CD player
- Sharp TV's
- Pyle DVD player

Exclusions

Owner's personal belongings.

Disclaimer

The Company offers the details of this vessel or yacht in good faith but cannot guarantee or warrant the accuracy of this information nor warrant the condition of the vessel. A buyer should instruct his representatives, agents, or his surveyors, to investigate such details as the buyer desires validated. This vessel or yacht is offered subject to prior sale, price change, or withdrawal without notice.

PHOTOS

Galley



Galley Refrigerator



Galley



Galley



Helm



Helm Deck



Helm Deck Seating



Helm Seating



Bow Stateroom



Aft Stateroom



Salon



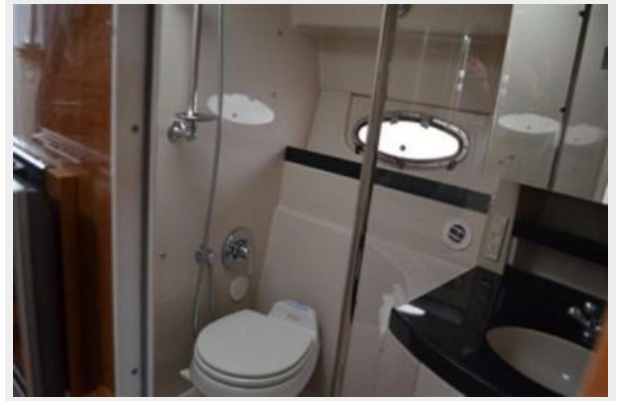
Salon Sofa



Salon Sofa



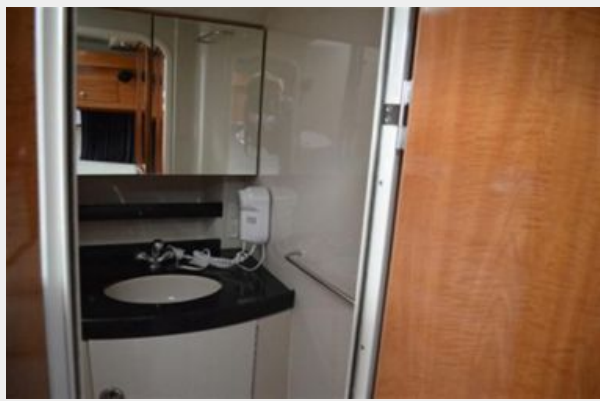
Head



Shower



Head



Cockpit Seating



Aft Enclosure



CONTACTS

Andrey Shestakov, leading yacht broker of the sales department of Shestakov Yacht Sales Inc. Shestakov Yacht Sales Inc., the official representative of the Miami/Fort Lauderdale FL headquarters.

Contact details

Email: andrey@shestakovyachtsales.com

Web: shestakovyachtsales.com/en/

Telephones

USA: +1(954)274-4435

Office hours

Monday – Saturday: **9:00 - 21:00** EDT

Sunday: **closed**

Address



Harbour Towne Marina, 850 NE 3rd St,
STE 213, Dania, FL 33004