

## PAWS TO FISH — CABO



**Builder:** CABO

**Year Built:** 2001

**Model:** Sport Fisherman

**Price:** PRICE ON APPLICATION

**Location:** United States

**LOA:** 35' 0" (10.67m)

**Beam:** 13' 0" (3.96m)

**Min Draft:** 3' 0" (0.91m)

**Cruise Speed:** 27 Kts. (31 MPH)

**Max Speed:** 31 Kts. (36 MPH)

Our experienced yacht broker, Andrey Shestakov, will help you choose and buy a yacht that best suits your needs **PAWS TO FISH — CABO** from our catalogue. Presently, at Shestakov Yacht Sales Inc., we have a wide variety of yachts available on our sale's list. We also work in close contact with all the big yacht manufacturers from all over the world.

If you would like to buy a yacht **PAWS TO FISH — CABO** or would like help answering any questions concerning purchasing, selling or chartering a yacht, please call **+1(954)274-4435**

---

# TABLE OF CONTENTS

---

TABLE OF CONTENTS	2
SPECIFICATIONS	3
Overview	3
Basic Information	3
Dimensions	3
Speed, Capacities and Weight	4
Accommodations	4
Hull and Deck Information	4
Engine Information	4
DETAILED INFORMATION	5
Recent Upgrades	5
Overview	5
Electronics	5
Additional Equipment	6
Owner Comments	6
Cabo Yachts 35 Flybridge	6
Exclusions	8
Disclaimer	8
PHOTOS	9
CONTACTS	16
Contact details	16
Telephones	16
Office hours	16
Address	16

---

# SPECIFICATIONS

---

## Overview

---

2014 - Everything has been repainted except for the hull 2015 - \$12,500+ invested in a one month yard period assuring she was fully serviced & ready for a buyer List of upgrades in 2015:

- New pump & servicing of the head
- Oil & Fluid & Zincs changed out on Generator & Engines
- New compass - Voyager compass flush mount
- Flo Scan - rewired
- New LED spreader lights - 300w White Twin Pk Floodlight
- Replaced ALL 5 batteries on the vessel
- Full exterior buff & wax
- New Engine & Generator gauges at the upper helm - old gauges were yellow and hard to read (replaced)
- Servicing of all Thru Valves
- Props & Thru Hull Valves sanded primed & painted

## Basic Information

---

**Category:** Sport Fisherman

**Sub Category:** Convertible

**Model Year:** 2001

**Year Built:** 2001

**Country:** United States

**Fly Bridge:** Yes

**Cockpit:** Yes

## Dimensions

---

**LOA:** 35' 0" (10.67m)

**Beam:** 13' 0" (3.96m)

**Min Draft:** 3' 0" (0.91m)

---

## Speed, Capacities and Weight

---

**Cruise Speed:** 27 Kts. (31 MPH)

**Max Speed:** 31 Kts. (36 MPH)

**Displacement:** 20000 Pounds

**Water Capacity:** 100 Gallons

**Holding Tank:** 40 Gallons

**Fuel Capacity:** 400 Gallons

---

## Accommodations

---

**Total Cabins:** 2

**Sleeps:** 4

**Total Heads:** 1

---

## Hull and Deck Information

---

**Hull Material:** Fiberglass

**Deck Material:** Fiberglass

**Hull Configuration:** Deep Vee

---

## Engine Information

---

**Engines:** 2

**Manufacturer:** Caterpillar

**Model:** 3208TA

**Engine Type:** Inboard

**Fuel Type:** Diesel

---

# DETAILED INFORMATION

---

## Recent Upgrades

---

2014 - Everything has been repainted except for the hull which is in excellent condition 2015 - Over \$12,000 invested in a complete mechanical servicing, and upgrades List of upgrades in 2015:

- New pump & servicing of the head
- Oil & Fluid & Zincs changed out on Generator & Engines
- New compass - Voyager compass flush mount
- Flo Scan - rewired
- New LED spreader lights - 300w White Twin Pk Floodlight
- Replaced ALL 5 batteries on the vessel
- Full exterior buff & wax
- New Engine & Generator gauges at the upper helm - old gauges were yellow and hard to read (replaced)
- Servicing of all Thru Valves
- Props & Thru Hull Valves sanded primed & painted

## Overview

---

Equipped with :

Air conditioning : Cruiseair Hydraulic steering: flybridge station only, throttles - flybridge and cockpit, Glendinning synchronizer) RC water maker ( new membrane - pickled - 2009) fresh water holding 80 gallon capacity Fuel diesel 400 gallon capacity Filters are spin on and Racors ( I have extra filters for oil and fuel that I keep on hand) Fuel flow meters on flybridge (flo-scan brand) 2 burner electric stove, sharp microwave oven Noco refrigerator -- Auxiliary Glacier Bay freezer ( under the seats on the starboard side ) Corian counter tops Wooden shades and matching knife holder in Galley/salon. Oak and holly flooring Batteries 5 series 31 / 12 V DC 9 (new batteries) and 1250-30 amp International battery charger (replaced last year). Bilges pumps - (2) Rule 2000 for and aft, (1) digital center bilge ( high water alarm and emergency pickup at main engine) Auto fire system clean agent Fe 241 in engine room EPIRB - ACR / 2002

Ground tackle: Lewmar windlass electric . Plow type anchor ( chain and nylon rodes) and an additional Fortress FX80. Waste - black/gray water FRP, 40 gallon capacity

## Electronics

---

Radio - (2) Icom (salon and helm)

GPS Nav - Furuno GPS 1850D, Furuno GP37 (with several navigation chips Florida both coasts

and Bahamas)Radar - Furuno 48 Mile radarAuto pilot - Simrad AP22Compass- RitchieSpeed log  
- Data marine and GPSDepth reading - B&G network and Furuno color LCDSearchlight - ACR

## Additional Equipment

---

Oil change systems

Hard topHelm enclosedIce makerOut riggersFish boxesLive wellStainless bow railStainless side railsWash downAdditional spreader lights ( 4 - total )

## Owner Comments

---

November 2013 - Complete superstructure paint from the hull up including cockpit, superstructure, bow, flybridge, hard top - everything except the hull which did not need paint. Total cost was over \$20,000

At the same time the hull was professionally waxed and buffed along with new bottom paint.

Since she has been lift kept and only in the water for 20-30 hours.

November 2013 - Just prior to repaint both the engines and generator were serviced (oil change, filters, zincs, acid washed through the engines to clean them).

Charter plotter was also replaced and upgraded just prior to repaint. Toilet valves were also replaced November 2013 and works perfectly now. I installed Glendinning synchronizer.(2009). New canvas - replaced last year(2009) front Tick mirror glass type in front and strata-glass type on sides to allow access to the out riggers. New exhaust elbows on both engines last year. New Icom radio at the helm.

This vessel is set up as a Bahama cruiser. The larger freezer on the starboard side under the seating, the water maker, extra shaft and props allows for a fairly self sufficient vessel. Although I primarily used her fishing for Sails, Tuna and Swords in the Keys of Florida, this fishing battle wagon is also very comfortable for cruising and overnights. I have all my receipts on the work done since owning the boat and the exact type of canvas I had installed. She is lift kept and in excellent condition, ready for a new home.

## Cabo Yachts 35 Flybridge

---

The quality of our 35 Flybridge is legendary. She was the first boat off the CABO line in 1991, and over the years this pocket battlewagon has been called "bulletproof" and "a benchmark for construction, design, and bluewater performance" by some of sportfishing's most respected experts. In 1999, she was retooled from the keel up to incorporate technical improvements and increase accessibility to her systems and components. More than 300 hulls now fish the oceans

---

of the world, making the 35 Flybridge one of our best-selling models ever.

**Performance** The CABO 35 Flybridge will get owners to the bite like no other boat her size. Her deep-V hull rides exceptionally soft in choppy head seas and is one of the driest, most comfortable fishing platforms in the business. This impeccable running bottom is further separated from the competition by its manufacturing process and materials. Solid and lightweight vinylester resins are used throughout, with stitched biaxial fiberglass roving further strengthening the hull without adding excess pounds. State-of-the-art coring materials are used where appropriate to reduce load and to enhance performance, but never at the expense of CABO's celebrated strength.

**Fishability** Made by fishermen for fishermen, the 35 Flybridge's offshore sporting prowess is professional-grade. Accommodating up to four stand-up anglers, the cockpit measures an astounding 130 square feet - unsurpassed acreage in a 35-footer. Padded bolsters ring the cockpit for enhanced comfort when bringing big fish to the outward-opening transom door with top gate. Tackle and gear are easily organized in 12 custom-built drawers at two rigging stations.

The 35 Express boasts a pair of large, macerator-equipped fish boxes that lie flush with the sole, as well as both fresh and saltwater washdowns. To minimize intrusion into the boat's valuable cockpit space, the 40-gallon bait tank is located in the transom, and port and starboard cabinets run nearly the length of the cockpit, providing convenient storage for gaffs and bait nets.

**Design & Construction** The flybridge features a tournament-style configuration, with the helm chair and controls located aft for 360-degree visibility - including into the cockpit. Comfortably seating five, the flybridge has a padded bench seat forward of the console with a large storage locker below. The engine instrumentation cluster is mounted centrally on the helm, and the console is designed with extra room to house today's latest marine electronics.

CABO's emphasis on the best engineering, materials, and construction is immediately visible in the engine room, which is entered through a hatch in the salon sole. Every surface is finished in white gelcoat that wipes clean. Unparalleled organization here means that every component and system can be easily accessed for maintenance. Find out much more about these and other CABO construction hallmarks here.

**Accommodations** When it comes to interior appointments and craftsmanship, the 35 Flybridge

goes head to head with the finest yachts. Teak woodwork is elegant and durable. Polished Corian countertops, a twin-burner cook top, a large refrigerator, and a convection/microwave oven meet the needs of discerning chefs. Opposite, the salon sofa seats six and converts to a double berth. Understated luxury continues below deck in the spacious master cabin with large, double island berth and the guest cabin with two single berths. Onboard storage, including two custom lockers to store as many as 10 offshore rods with reels, puts many larger boats to shame. A spacious head with separate shower stall adjoins the forward stateroom.

## Exclusions

---

Owner's personal belongings.

## Disclaimer

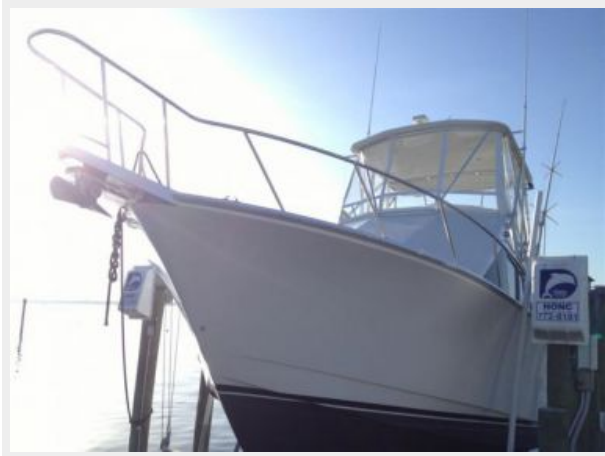
---

The Company offers the details of this vessel or yacht in good faith but cannot guarantee or warrant the accuracy of this information nor warrant the condition of the vessel. A buyer should instruct his representatives, agents, or his surveyors, to investigate such details as the buyer desires validated. This vessel or yacht is offered subject to prior sale, price change, or withdrawal without notice.

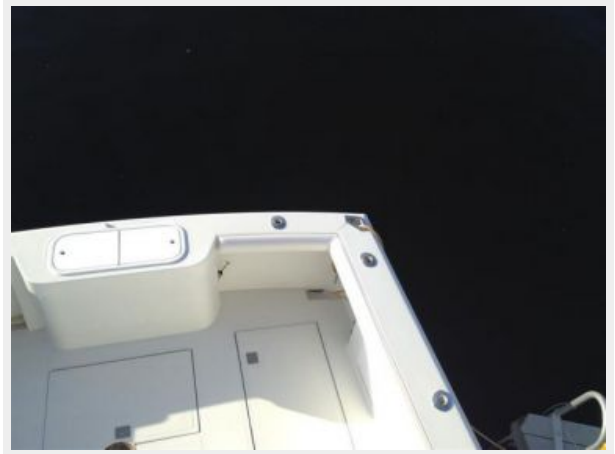


# PHOTOS

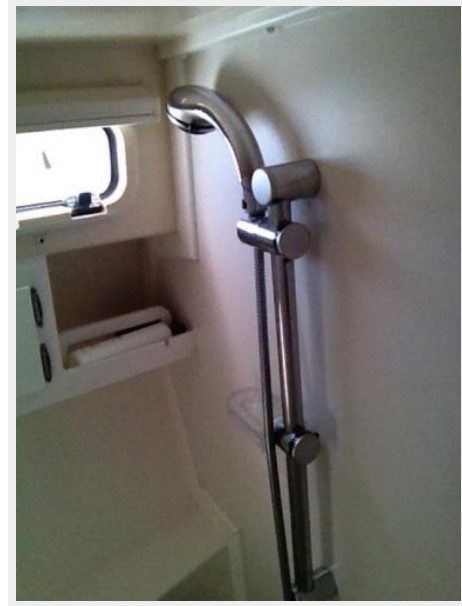


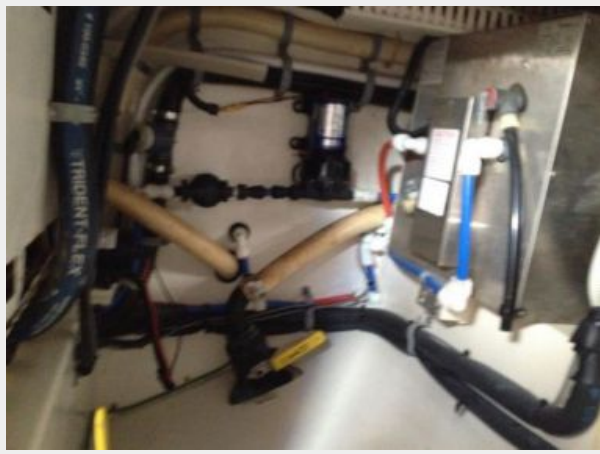












# CONTACTS

---

Andrey Shestakov, leading yacht broker of the sales department of Shestakov Yacht Sales Inc. Shestakov Yacht Sales Inc., the official representative of the Miami/Fort Lauderdale FL headquarters.

## Contact details

---

Email: [andrey@shestakovyachtsales.com](mailto:andrey@shestakovyachtsales.com)

Web: [shestakovyachtsales.com/en/](http://shestakovyachtsales.com/en/)

## Telephones

---

USA: +1(954)274-4435

## Office hours

---

Monday – Saturday: **9:00 - 21:00** EDT

Sunday: **closed**

## Address

---



Harbour Towne Marina, 850 NE 3rd St,  
STE 213, Dania, FL 33004