

PAWS TO FISH — CABO



Судостроитель: CABO

Год постройки: 2001

Модель: Катер для спортивной рыбалки

Цена: **ЦЕНА ЯХТЫ ПО ЗАПРОСУ**

Местонахождение: United States

Длина общая: 35' 0" (10.67m)

Ширина: 13' 0" (3.96m)

Мин. осадка: 3' 0" (0.91m)

Крейс. скорость: 27 Kts. (31 MPH)

Макс. скорость: 31 Kts. (36 MPH)

Купить **PAWS TO FISH — CABO** а также выбрать подходящую вам яхту из нашего каталога яхт вам поможет опытный яхтенный брокер Андрей Шестаков. На сегодняшний день компания **Shestakov Yacht Sales Inc.** имеет большое количество яхт в собственном списке продаж, а также тесно сотрудничает со всеми крупными яхтенными производителями по всему миру.

Для того чтобы купить яхту **PAWS TO FISH — CABO** а также проконсультироваться по любому вопросу связанному с покупкой, продажей, чартером яхт позвоните по телефону **+7(918)465-66-44**.

ОГЛАВЛЕНИЕ

ОГЛАВЛЕНИЕ	2
ХАРАКТЕРИСТИКИ	3
Обзор	3
Основная информация	3
Размеры	3
Скорость, вместимость и масса	4
Размещение	4
Корпус и палуба	4
Информация о двигателе	4
ПОДРОБНОЕ ОПИСАНИЕ	5
Recent Upgrades	5
Overview	5
Electronics	5
Additional Equipment	6
Owner Comments	6
Cabo Yachts 35 Flybridge	6
Исключения	8
Отказ от ответственности	8
ФОТОГРАФИИ	9
КОНТАКТЫ	16
Контактная информация	16
Телефоны	16
Время работы	16
Адрес	16

ХАРАКТЕРИСТИКИ

Обзор

2014 - Everything has been repainted except for the hull 2015 - \$12,500+ invested in a one month yard period assuring she was fully serviced & ready for a buyer List of upgrades in 2015:

- New pump & servicing of the head
- Oil & Fluid & Zincs changed out on Generator & Engines
- New compass - Voyager compass flush mount
- Flo Scan - rewired
- New LED spreader lights - 300w White Twin Pk Floodlight
- Replaced ALL 5 batteries on the vessel
- Full exterior buff & wax
- New Engine & Generator gauges at the upper helm - old gauges were yellow and hard to read (replaced)
- Servicing of all Thru Valves
- Props & Thru Hull Valves sanded primed & painted

Основная информация

Тип судна: Катер для спортивной рыбалки

Подкатегория: Convertible

Модельный год: 2001

Год постройки: 2001

Страна: United States

Открытая палуба мостика: Да

Кубрик: Да

Размеры

Длина общая: 35' 0" (10.67m)

Ширина: 13' 0" (3.96m)

Мин. осадка: 3' 0" (0.91m)

Скорость, вместимость и масса

Крейс. скорость: 27 Kts. (31 MPH)

Макс. скорость: 31 Kts. (36 MPH)

Водоизмещение: 20000 Pounds

Вместимость воды: 100 Gallons

Вместимость сточного бака: 40 Gallons

Объем топливного бака: 400 Gallons

Размещение

Всего кают: 2

Спальные места: 4

Всего ком. состава: 1

Корпус и палуба

Материал корпуса: Fiberglass

Материал палубы: Fiberglass

Комплектация корпуса: Deep Vee

Информация о двигателе

Двигатели: 2

Производитель: Caterpillar

Модель: 3208TA

Тип двигателя: Inboard

Тип топлива: Diesel

ПОДРОБНОЕ ОПИСАНИЕ

Recent Upgrades

2014 - Everything has been repainted except for the hull which is in excellent condition 2015 - Over \$12,000 invested in a complete mechanical servicing, and upgrades List of upgrades in 2015:

- New pump & servicing of the head
- Oil & Fluid & Zincs changed out on Generator & Engines
- New compass - Voyager compass flush mount
- Flo Scan - rewired
- New LED spreader lights - 300w White Twin Pk Floodlight
- Replaced ALL 5 batteries on the vessel
- Full exterior buff & wax
- New Engine & Generator gauges at the upper helm - old gauges were yellow and hard to read (replaced)
- Servicing of all Thru Valves
- Props & Thru Hull Valves sanded primed & painted

Overview

Equipped with :

Air conditioning : Cruiseair Hydraulic steering: flybridge station only, throttles - flybridge and cockpit, Glendinning synchronizer) RC water maker (new membrane - pickled - 2009) fresh water holding 80 gallon capacity Fuel diesel 400 gallon capacity Filters are spin on and Racors (I have extra filters for oil and fuel that I keep on hand) Fuel flow meters on flybridge (flo-scan brand) 2 burner electric stove, sharp microwave oven Noco refrigerator -- Auxiliary Glacier Bay freezer (under the seats on the starboard side) Corian counter tops Wooden shades and matching knife holder in Galley/salon. Oak and holly flooring Batteries 5 series 31 / 12 V DC 9 (new batteries) and 1250-30 amp International battery charger (replaced last year). Bilges pumps - (2) Rule 2000 for and aft, (1) digital center bilge (high water alarm and emergency pickup at main engine) Auto fire system clean agent Fe 241 in engine room EPIRB - ACR / 2002 Ground tackle: Lewmar windlass electric . Plow type anchor (chain and nylon rodes) and an additional Fortress FX80. Waste - black/gray water FRP, 40 gallon capacity

Electronics

Radio - (2) Icom (salon and helm)

GPS Nav - Furuno GPS 1850D, Furuno GP37 (with several navigation chips Florida both coasts

and Bahamas)Radar - Furuno 48 Mile radarAuto pilot - Simrad AP22Compass- RitchieSpeed log
- Data marine and GPSDepth reading - B&G network and Furuno color LCDSearchlight - ACR

Additional Equipment

Oil change systems

Hard topHelm enclosedIce makerOut riggersFish boxesLive wellStainless bow railStainless side railsWash downAdditional spreader lights (4 - total)

Owner Comments

November 2013 - Complete superstructure paint from the hull up including cockpit, superstructure, bow, flybridge, hard top - everything except the hull which did not need paint. Total cost was over \$20,000

At the same time the hull was professionally waxed and buffed along with new bottom paint.

Since she has been lift kept and only in the water for 20-30 hours.

November 2013 - Just prior to repaint both the engines and generator were serviced (oil change, filters, zincs, acid washed through the engines to clean them).

Charter plotter was also replaced and upgraded just prior to repaint. Toilet valves were also replaced November 2013 and works perfectly now. I installed Glendinning synchronizer.(2009). New canvas - replaced last year(2009) front Tick mirror glass type in front and strata-glass type on sides to allow access to the out riggers. New exhaust elbows on both engines last year. New Icom radio at the helm.

This vessel is set up as a Bahama cruiser. The larger freezer on the starboard side under the seating, the water maker, extra shaft and props allows for a fairly self sufficient vessel. Although I primarily used her fishing for Sails, Tuna and Swords in the Keys of Florida, this fishing battle wagon is also very comfortable for cruising and overnights. I have all my receipts on the work done since owning the boat and the exact type of canvas I had installed. She is lift kept and in excellent condition, ready for a new home.

Cabo Yachts 35 Flybridge

The quality of our 35 Flybridge is legendary. She was the first boat off the CABO line in 1991, and over the years this pocket battlewagon has been called "bulletproof" and "a benchmark for construction, design, and bluewater performance" by some of sportfishing's most respected experts. In 1999, she was retooled from the keel up to incorporate technical improvements and increase accessibility to her systems and components. More than 300 hulls now fish the oceans

of the world, making the 35 Flybridge one of our best-selling models ever.

Performance The CABO 35 Flybridge will get owners to the bite like no other boat her size. Her deep-V hull rides exceptionally soft in choppy head seas and is one of the driest, most comfortable fishing platforms in the business. This impeccable running bottom is further separated from the competition by its manufacturing process and materials. Solid and lightweight vinylester resins are used throughout, with stitched biaxial fiberglass roving further strengthening the hull without adding excess pounds. State-of-the-art coring materials are used where appropriate to reduce load and to enhance performance, but never at the expense of CABO's celebrated strength.

Fishability Made by fishermen for fishermen, the 35 Flybridge's offshore sporting prowess is professional-grade. Accommodating up to four stand-up anglers, the cockpit measures an astounding 130 square feet - unsurpassed acreage in a 35-footer. Padded bolsters ring the cockpit for enhanced comfort when bringing big fish to the outward-opening transom door with top gate. Tackle and gear are easily organized in 12 custom-built drawers at two rigging stations.

The 35 Express boasts a pair of large, macerator-equipped fish boxes that lie flush with the sole, as well as both fresh and saltwater washdowns. To minimize intrusion into the boat's valuable cockpit space, the 40-gallon bait tank is located in the transom, and port and starboard cabinets run nearly the length of the cockpit, providing convenient storage for gaffs and bait nets.

Design & Construction The flybridge features a tournament-style configuration, with the helm chair and controls located aft for 360-degree visibility - including into the cockpit. Comfortably seating five, the flybridge has a padded bench seat forward of the console with a large storage locker below. The engine instrumentation cluster is mounted centrally on the helm, and the console is designed with extra room to house today's latest marine electronics.

CABO's emphasis on the best engineering, materials, and construction is immediately visible in the engine room, which is entered through a hatch in the salon sole. Every surface is finished in white gelcoat that wipes clean. Unparalleled organization here means that every component and system can be easily accessed for maintenance. Find out much more about these and other CABO construction hallmarks here.

Accommodations When it comes to interior appointments and craftsmanship, the 35 Flybridge

goes head to head with the finest yachts. Teak woodwork is elegant and durable. Polished Corian countertops, a twin-burner cook top, a large refrigerator, and a convection/microwave oven meet the needs of discerning chefs. Opposite, the salon sofa seats six and converts to a double berth. Understated luxury continues below deck in the spacious master cabin with large, double island berth and the guest cabin with two single berths. Onboard storage, including two custom lockers to store as many as 10 offshore rods with reels, puts many larger boats to shame. A spacious head with separate shower stall adjoins the forward stateroom.

Исключения

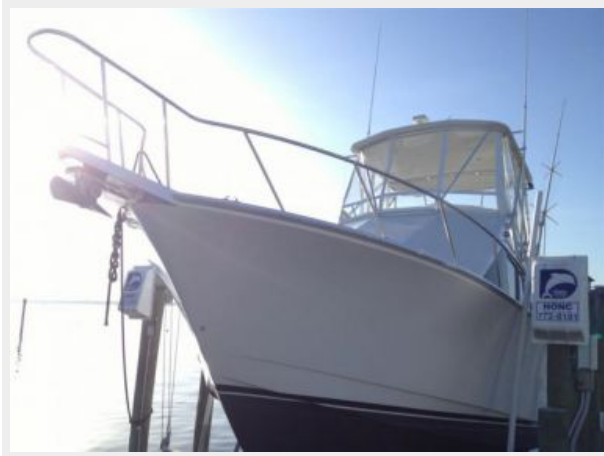
При продаже яхты исключаются личные вещи владельца.

Отказ от ответственности

Компания предоставляет описание судна или яхты добросовестно, но не может гарантировать точность этой информации, а также не ручается за техническое состояние. Покупатель должен проинструктировать своих агентов или оценщиков исследовать представленную информацию более подробно, по собственному желанию. Продажа судна или яхты, изменение цены или снятие с продажи будет происходить без предварительного уведомления.

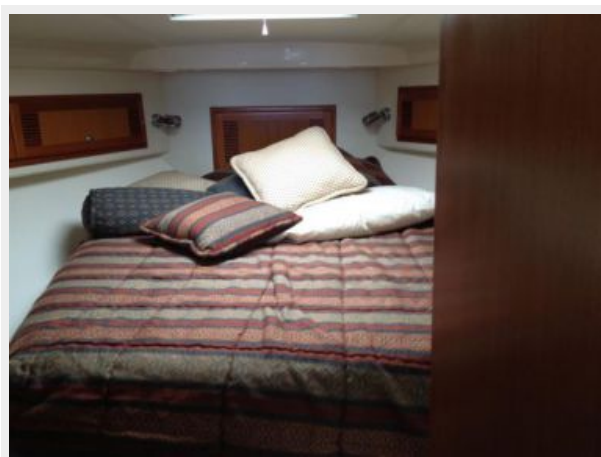
ФОТОГРАФИИ

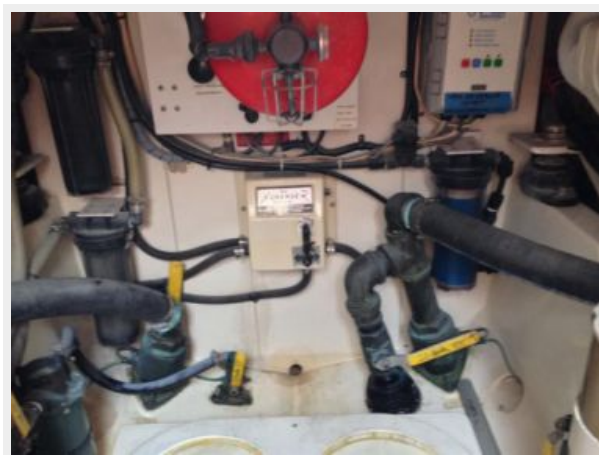
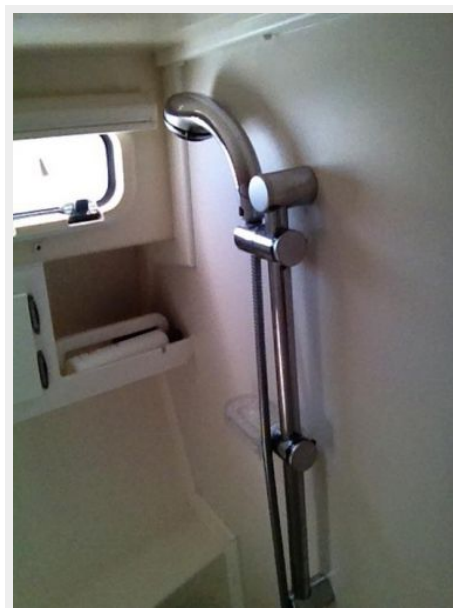














КОНТАКТЫ

Андрей Шестаков (Andrey Shestakov) – ведущий яхтенный брокер отдела продаж яхт и судов компании Shestakov Yacht Sales Inc. Официальный представитель Shestakov Yacht Sales Inc. для русскоговорящих клиентов в центральном офисе компании в Майами/Форт Лодердейл/Флорида/США.

Контактная информация

Email: andrey@shestakovyachtsales.com

Web: shestakovyachtsales.com

Телефоны

Краснодарский край: **+7(918)465-66-44**

США, Майами, Флорида: **+1(954)274-4435**

Время работы

Понедельник – Суббота: **9:00 - 21:00**
EDT

Воскресенье: **Закрыто**

Адрес



Harbour Towne Marina, 850 NE 3rd St,
STE 213, Dania, FL 33004