

## NAMOH — CHEOY LEE



**Судостроитель:** [CHEOY LEE](#)

**Год постройки:** 2003

**Модель:** Моторная яхта

**Цена:** **ЦЕНА ЯХТЫ ПО ЗАПРОСУ**

**Местонахождение:** United States

**Длина общая:** 125' 0" (38.10m)

**Ширина:** 25' 0" (7.62m)

**Макс. осадка:** 7' 2" (2.18m)

**Крейс. скорость:** 14 Kts. (16 MPH)

**Макс. скорость:** 21 Kts. (24 MPH)

Купить **NAMOH — CHEOY LEE** а также выбрать подходящую вам яхту из нашего каталога яхт вам поможет опытный яхтенный брокер Андрей Шестаков. На сегодняшний день компания **Shestakov Yacht Sales Inc.** имеет большое количество яхт в собственном списке продаж, а также тесно сотрудничает со всеми крупными яхтенными производителями по всему миру.

Для того чтобы купить яхту **NAMOH — CHEOY LEE** а также проконсультироваться по любому вопросу связанному с покупкой, продажей, чартером яхт позвоните по телефону **+7(918)465-66-44**.

# ОГЛАВЛЕНИЕ

ОГЛАВЛЕНИЕ	2
ХАРАКТЕРИСТИКИ	4
Основная информация	4
Размеры	4
Скорость, вместимость и масса	4
Размещение	4
Корпус и палуба	5
Информация о двигателе	5
ПОДРОБНОЕ ОПИСАНИЕ	6
BROKER'S REMARKS	6
MACHINERY	6
COMMUNICATION & NAVIGATION SYSTEMS	7
ENTERTAINMENT SYSTEMS	10
GALLEY & LAUNDRY EQUIPMENT	10
TENDERS & TOYS	12
DECK EQUIPMENT	12
SECURITY, FIRE FIGHTING & SAFETY EQUIPMENT	13
EXCLUSIONS	14
ACCOMMODATIONS	14
ADDITIONAL COMMENTS	15
Исключения	16
Отказ от ответственности	16
ФОТОГРАФИИ	17
Main Deck Aft	17
Main Aft Deck Dining	17
Main Salon	17
Dining Salon	17
Skylounge	17

---

Skylounge	17
Upper Deck Alfresco Dining	18
Master Stateroom	18
Master Stateroom	18
Master Stateroom Office	18
Master Bath	18
Master Bath His	18
Guest Stateroom - King	19
Guest Stateroom - King	19
Guest Stateroom Head	19
Guest Stateroom - Queen	19
Guest Stateroom Bath	19
Guest Stateroom Bath	19
Guest Stateroom - Twin	20
Pilothouse	20
Pilothouse	20
Galley	20
Upper Deck Jacuzzi	20
Flybridge	20
Forward Sunning	21
Stern	21
<b>КОНТАКТЫ</b>	<b>22</b>
Контактная информация	22
Телефоны	22
Время работы	22
Адрес	22

---

# ХАРАКТЕРИСТИКИ

## Основная информация

Тип судна: Моторная яхта

Подкатегория: Tri-Deck

Модельный год: 2003

Год постройки: 2003

Страна: United States

Верх: 2358

Открытая палуба мостика: Да

## Размеры

Длина общая: 125' 0" (38.10m)

Длина по ватерлинии: 105' 0" (32.00m)

Ширина: 25' 0" (7.62m)

Макс. осадка: 7' 2" (2.18m)

Длина привального бруса: 125' 0"  
(38.10m)

## Скорость, вместимость и масса

Крейс. скорость: 14 Kts. (16 MPH)

Дальность на крейсерской скорости:  
3000

Макс. скорость: 21 Kts. (24 MPH)

Водоизмещение: 412000 Pounds

Чистый вес: 323 Pounds

Вместимость воды: 2000 Gallons

Объем топливного бака: 9800 Gallons

## Размещение

Всего кают: 5

Всего коек: 6

Спальные места: 10

Каюта капитана: Да

Каюты экипажа: 5

Спальных мест экипажа: 7

## Корпус и палуба

---

**Материал корпуса:** Fiberglass

**Материал палубы:** Fiberglass

**Комплектация корпуса:** Semi-Displacement

**Отделка корпуса:** Fiberglass

## Информация о двигателе

---

**Двигатели:** 2

**Производитель:** Caterpillar

**Модель:** 3512B

**Тип двигателя:** Inboard

**Тип топлива:** Diesel

---

# ПОДРОБНОЕ ОПИСАНИЕ

---

## BROKER'S REMARKS

---

NAMOH represents an exceptional opportunity to purchase an immaculately cared for, huge volume custom tri-deck motor yacht. NAMOH has done a recent refit to include a complete exterior paint job, 10 year ABS class certification, new main salon carpet and new fabrics on the sundeck. She is ABS classed and MCA Compliant. NAMOH is built to a demanding and experienced owner's specifications and is one of the finest yachts to have been produced by Cheoy Lee. The interior volume is exceptional and would normally be found in a much larger yacht, the exterior decks are expansive with a full length sun deck, beautiful teak decks and substantial room to entertain in comfort either Al Fresco or in formal elegance. The layout is superb, perfectly proportioned with huge windows to filter natural ambient light and complimented by an impeccable fit and finish. All systems, electronics, AV, fixtures and fittings are of the highest quality throughout. NAMOH is an absolute must-see for anyone considering a top quality yacht of this size; she is ready to go and easily available for showings on request.

## MACHINERY

---

### Main Engines

Engine Type: (2) Caterpillar 3512B

Engine Hours: 6654 hrs approx per engine as of 24 October 2014

Gearboxes for Main Engines: ZF BW 465 Ratio:2.476:1A

### Generators & Electricity

Generators: (2) Northern Lights 65 kW @ 1800 rpm

Generator Hours: 17649 (recently rebuilt 2011) as of 24 October 2014

Generator Fuel Consumption: 5 gal/hr

Shore Power: Atlas 60 kVA

## Batteries

Main Engine Starting: (2) 24V DC 65 amp and 24 V DC

Generator Starting: (2) 12V DC 175 amp-hour gel batteries

Air Conditioning:

Type: Aqua-air 30 ton chilled water AC

## Other Machinery

Watermakers: (2) Filtration Concepts INC watermakers 1,600 GPD ea

Stabilizers: Naiad roll stabilizer model 410

Bow Thruster: Naiad 20" 75 hp proportional AC electric run off Atlas System

Steering System: Wagner power hydraulic

Fuel Separator & Filtration: Alfa Laval MAB103 230 GPH

Sewage System: Hamann Waste Treatment System

Fresh Water System: Headhunter

Lube Oil Capacity 127 USG

Waste Oil Capacity 127 USG

## COMMUNICATION & NAVIGATION SYSTEMS

Thrane & Thrane Mini M

SATcom: KVH Fleet Broadband 250 (mini VSat)

Telephone System: Internal Panasonic PBX system

SSB: Sea 235

VHF: Sea 157  
ICOM M602

Wifi: Syrens  
3G/4G Router  
e3 Systems Integrated Router

Cellular Phone System: SX7T GSM Terminal

### **BRIDGE Navigation Systems**

Radars: (2) Furuno 2827 96 miles ARPA color radars

Gyrocompass: Furuno SC Satellite Compass

AIS: Furuno F150

Magnetic Compass: Ritchie

Auto Pilot: Anschutz with jog control

Depth Sounder: Brookes & Gatehouse

Ships Computer: 1 x Transas ECS 4000, 1 x Nobeltec



Printer:	HP All in one series
Wind/Speed Log:	B&G
Navigation System	Transas system with 2 Hatteland 21” screen s  Brooks & Gatehouse  Northstar 952
Sonar	Wesmar HD800
Receiver	Furuno NX-500 Navtex
Additional Equipment	FLIR infrared camera ACR Searchlight (2) Kahlenberg Auto/Manual airhorns Anschutz Autopilot
Wing Stations (port & starboard)	Engine controls, bowthruster, steering, horn, engine start/stop.
Additional Equipment	(3) STIDD Luxury seats

**FLYBRIDGE SYSTEMS** Flybridge has a full set of driving equipment: engine controls, bow thruster, steering

	(2) Furuno 96 miles ARPA color radars
Radars:	(1) Furuno Radar monitor  (1) Sonar repeater monitor
Auto Pilot:	Anschutz with jog control
Navigation System	Transas system with VEI screen

Brooks & Gatehouse

Northstar 952

Sonar

Wesmar HD800

Additional Equipment (3) STIDD Luxury seats

---

## ENTERTAINMENT SYSTEMS

---

(2) 20" Sharp Flat screen TVs

(2) 25" Sharp Flat screen TVs

Televisions (1) 37" Sharp Flat screen TV

(1) 31" Sharp Flat screen TV

(1) 40" Samsung Flat Screen TV

(7) Direct TV receivers for both USA & Caribbean regions (7) Samsung Bluray/dvd players

(7) IPOD hookups

---

## GALLEY & LAUNDRY EQUIPMENT

---

Main Galley Equipment

Cooking Equipment: (1) Miele induction stove top

Refrigeration/Freezer: (2) Sub zero 700TR Refrigerators

(1) Sub-Zero 700TFI Freezer

Dishwasher: (1) Miele Diamante dishwasher

## Crew Galley/Mess Equipment

Cooking Equipment: (1) Gaggenau electric over

Refrigeration/Freezer: KitchenAid Superba side by side refrigerator/freezer

(2) Asko household dishwashers

Other: (1) Franke instant-hot water dispensers

Best Pull-out type range hoods

## Additional Galley Equipment

(2) KitchenAid Oven

(2) Gaggenau EB964-965-611 Electric Ovens

Cooking Equipment: (3) Gaggenau VC116-602 Glass-ceramic cooking range with "Powerlight" cooking zones

(2) Kitchen Aid microwave Ovens

Refrigeration/Freezer: (4) Sub-zero 259RP under counter refrigerators

(2) Sub-zero 424G/O wine storage units

Wine Storage:

(1) Sub-zero

Laundry Equipment:

(2) Miele dryers

Main Laundry Equipment (1) Novotronic washer  
(1) Novotronic dryer  
(1) Maytag washer

## TENDERS & TOYS

---

Tenders: 17 ft Zodiac Eclipse w/115 4-stroke Yamaha

Waverunners: (2) Yamaha VX1000

Bauer dive compressor

Dive Gear: 3<sup>rd</sup> Lung

Full dive equipment x 8, Snorkel equipment x 10

Yoga mat

Wii Fitness

Wakeboard

Knee board

Water skis

Additional Equipment Towable Tubes

18 ft Trampoline

(2) sets of Golf Clubs

(2) Mobility Scooters

(2) 12 ft Wilderness Pungo Sea Kayaks

Electronic player piano (in Skylounge)

## DECK EQUIPMENT

---

Anchor Windlass: (2) Maxwell VWC 8000 hydraulic anchors windlasses

Aft Warping Capstans: (2) Maxwell

Anchors: (2) Poole 400 lb each

Anchor Chain: (2) 400' of 5/8" high test galvanized chain

Boat Crane and Davits: Marquipt 3000lb

Passerelle: Marquipt hydraulic

Swimming Platform: With ladders and rails, bumpers for Jupiter

---

## SECURITY, FIRE FIGHTING & SAFETY EQUIPMENT

---

Security Equipment:

CCTV System: Cameras engine room, side decks and aft deck

Cameras: Elbex

Fire Fighting Equipment:

Fire Control System: Ansul CO2

Fire Extinguishers: 20

Alarms: DMP Radio Zeeland

Safety Equipment

Life Rafts: (2) 10 person Zodiac (1) 16 person

Life Rings: 4 with smoke, and light

EPIRBs: 1

Flares: Full grab bag, with SART

Medical Equipment: Full medical bag (2) oxygen bottles; AED

---

## EXCLUSIONS

Owner's personal effects and art work. A full inventory of exclusions to be provided at time of fully executed Purchase Agreement.

---

## ACCOMMODATIONS

Main Salon & Dining Room: In the formal dining room, forward of the main salon, is a gorgeous custom dining table that is 7' diameter with a lazy Susan that seats 10 comfortably. There is a marble-topped buffet forward and long banquets to port and starboard that are "fiddled" to house the yacht's crystal and china.

The dining salon is separated from the "main" salon by a beautiful four-posted entertainment center that contains a 37" pop-up flat screen television that will rotate allowing it to be viewed from the dining room or salon. The salon is spacious and comfortable, warm ambient light is filtered from oversized windows and is perfectly complimented by elegant window treatments, soft goods and the main seating area that consists of 2 sofas and 2 chairs around a central coffee table. Master Stateroom: Centerline king bed in full beam stateroom located on the main deck, forward of the dining room. It is entered through the owner's private office on the starboard side through double stained glass doors. There is a cedar lined walk-in closet, three hanging closets, ample drawer space, entertainment center, and large windows on the port and starboard sides.

There are his and hers baths with Persian-gold marble vanity tops, floors, and bulkheads with mother of pearl inlays. All hardware is polished gold with crystal faucets. Her bath has a Jacuzzi tub/shower with steam bath and his has a shower with frameless door.

Guest Stateroom Foyer: All of the guest staterooms are accessed from the main deck starboard entrance foyer via stairs that lead to a large guest foyer with blue granite-topped cabinetry. The lower guest accommodations are finished in quarter-figured Anigre wood and a selection of marbles and granites.

VIP Staterooms (2): Island king beds, granite topped bedside nightstands, entertainment systems with individual satellite decoders, hanging closets, and bureaus. Both en suite bathrooms have a Jacuzzi tub/shower and millennium blue granite vanity tops and floors.

Guest Stateroom One: Queen sized bed, entertainment system, hanging locker and storage drawers. The en suite bathroom has a port light, Jacuzzi tub/shower and blue Macuba granite vanity tops and floors.

Guest Stateroom Two: Twin beds with granite topped night stand, and entertainment system with LCD TV. The en suite bathroom has a Jacuzzi tub/shower and blue Bahia granite vanity tops and floor.

Main Salon & Dining Room: In the formal dining room, forward of the main salon, is a beautiful custom dining table that is 7' diameter with a lazy Susan that seats 10 comfortably. There is a marble-topped buffet forward and long banquets to port and starboard that are "fiddled" to house the yachts crystal and china.

The dining salon is separated from the "main" salon by a four-posted entertainment center that contains a 37" pop-up flat screen television that will rotate allowing it to be viewed from the dining room or salon. The salon seating area consists of 2 sofas and 2 chairs around a coffee table.

Aft Deck: The main aft deck with teak flooring is well proportioned and has a beautiful custom mahogany inlaid hi/lo, in/out table that seats 10 comfortably. There is access from the aft deck to the skylounge deck, the swim platform, and walk around decks.

Sky lounge Deck: The skylounge deck is an excellent place for entertaining. There is a large formal bar in Makore and black-galaxy granite that seats 5, a large semi-circular sofa around a big screen TV, a card table, and electronic player piano.

The skylounge powder room vanity has a roman-gold marble top with a gravity glass bowl sink and roman-gold marble flooring.

Access to the covered outside deck with teak floor is via double stainless sliding glass doors aft. This deck features a 32" flat panel television, teak table and teak chairs for 10, and large round 6 person spa with lots of built-in seating.

Sundeck: The spectacular sundeck has a helm with complete electronics and three captains' chairs. Just aft of the helm chairs is an oversized, half circle, sun pad with back cushions perfect for watching where you are going with excellent views. The sundeck also has a BBQ grill and a refreshment center.

---

## ADDITIONAL COMMENTS

---

The exceptional quality and spaciousness of this yacht is readily apparent and she will compare

favorably with all of her competitors. She was a no expense spared semi-custom build which is reflected in the use of teak on all exterior decks, the quality and combinations of the wood used in the millwork package, the use of beautiful granites and inlaid marble throughout, the stunning stained glass doors in the master, the expansive and thoughtfully laid out crew accommodations, the liberal use of insulation material making her extremely quiet at speed, Jacuzzi tubs and king sized berths in the guest accommodation, a vast and very comfortable skylounge designed to entertain and beautiful complimentary soft goods, furniture and treatments. She is, in general a simply stunning yacht that needs to be seen to be appreciated.

## **Исключения**

---

При продаже яхты исключаются личные вещи владельца.

## **Отказ от ответственности**

---

Компания предоставляет описание судна или яхты добросовестно, но не может гарантировать точность этой информации, а также не ручается за техническое состояние. Покупатель должен проинструктировать своих агентов или оценщиков исследовать представленную информацию более подробно, по собственному желанию. Продажа судна или яхты, изменение цены или снятие с продажи будет происходить без предварительного уведомления.



# ФОТОГРАФИИ

**Main Deck Aft**



**Main Aft Deck Dining**



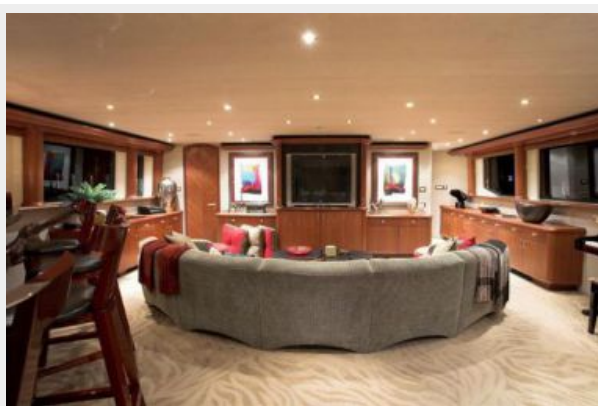
**Main Salon**



**Dining Salon**



**Skylounge**



**Skylounge**



**Upper Deck Alfresco Dining**



**Master Stateroom**



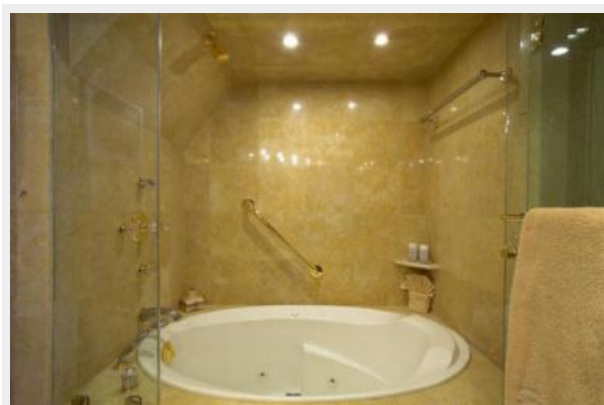
**Master Stateroom**



**Master Stateroom Office**



**Master Bath**



**Master Bath His**





**Guest Stateroom - King**



**Guest Stateroom - King**



**Guest Stateroom Head**



**Guest Stateroom - Queen**



**Guest Stateroom Bath**



**Guest Stateroom Bath**



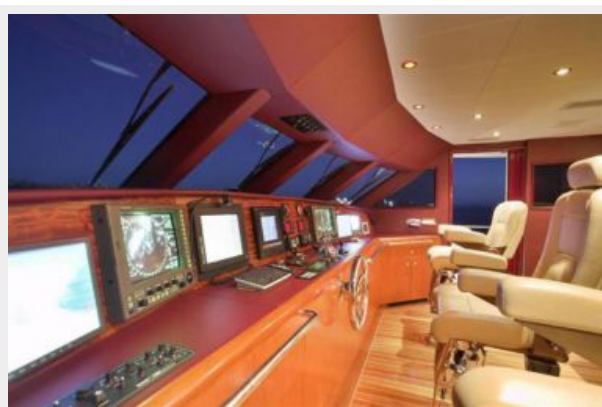
**Guest Stateroom - Twin**



**Pilothouse**



**Pilothouse**



**Galley**



**Upper Deck Jacuzzi**



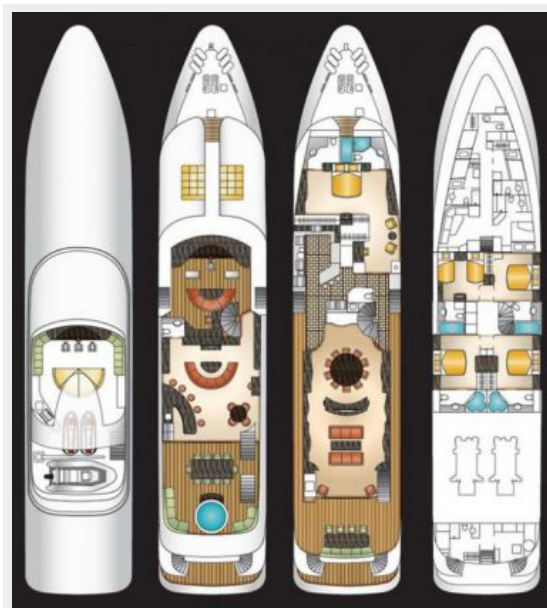
**Flybridge**



### Forward Sunning



### Stern





# КОНТАКТЫ

---

Андрей Шестаков (Andrey Shestakov) – ведущий яхтенный брокер отдела продаж яхт и судов компании Shestakov Yacht Sales Inc. Официальный представитель Shestakov Yacht Sales Inc. для русскоговорящих клиентов в центральном офисе компании в Майами/Форт Лодердейл/Флорида/США.

## Контактная информация

---

Email: [andrey@shestakovyachtsales.com](mailto:andrey@shestakovyachtsales.com)

Web: [shestakovyachtsales.com](http://shestakovyachtsales.com)

## Телефоны

---

Краснодарский край: **+7(918)465-66-44**

США, Майами, Флорида: **+1(954)274-4435**

## Время работы

---

Понедельник – Суббота: **9:00 - 21:00**  
EDT

Воскресенье: **Закрито**

## Адрес

---



Harbour Towne Marina, 850 NE 3rd St,  
STE 213, Dania, FL 33004