

SEAGULL OF CAYMAN — FEADSHIP



Судостроитель: FEADSHIP

Год постройки: 1980

Модель: Моторная яхта

Цена: **ЦЕНА ЯХТЫ ПО ЗАПРОСУ**

Местонахождение: United States

Длина общая: 131' 2" (39.98m)

Ширина: 25' 9" (7.85m)

Макс. осадка: 7' 8" (2.34m)

Крейс. скорость: 13 Kts. (15 MPH)

Макс. скорость: 14 Kts. (16 MPH)

Купить **SEAGULL OF CAYMAN — FEADSHIP** а также выбрать подходящую вам яхту из нашего каталога яхт вам поможет опытный яхтенный брокер Андрей Шестаков. На сегодняшний день компания **Shestakov Yacht Sales Inc.** имеет большое количество яхт в собственном списке продаж, а также тесно сотрудничает со всеми крупными яхтенными производителями по всему миру.

Для того чтобы купить яхту **SEAGULL OF CAYMAN — FEADSHIP** а также проконсультироваться по любому вопросу связанному с покупкой, продажей, чартером яхт позвоните по телефону **+7(918)465-66-44**.

ОГЛАВЛЕНИЕ

ОГЛАВЛЕНИЕ	2
ХАРАКТЕРИСТИКИ	5
Основная информация	5
Размеры	5
Скорость, вместимость и масса	5
Размещение	5
Корпус и палуба	5
Информация о двигателе	6
ПОДРОБНОЕ ОПИСАНИЕ	7
Overview	7
Accommodations	7
Main Deck	7
LOWER DECK, GUEST STATEROOMS	7
Pilothouse	8
Captain's Cabin	8
Crew Lounge	8
Crew Quarters	8
Galley	8
Deck Equipment	9
Electrical System	9
Audio and Visual	9
Electronics	10
Construction	10
Laundry equipment	10
Mechanical Equipment	10
Исключения	11
Отказ от ответственности	11
ФОТОГРАФИИ	12

Salon	12
Bar	12
Dining	12
Master Bath	12
Sink	12
AFT DECK	13
Master	13
Master	13
Guest King Stateroom	13
Guest Twin Stateroom (converts to King berth)	13
Master Bath	13
Side Deck	14
Master On Deck	14
Main Deck Bar	14
Master Bath	14
Galley	14
Galley	14
Pilot House	15
Galley	15
Pilothouse	15
Boat Deck	15
Boat Deck	15
Boat Deck	16
Engine Room	16
Flybridge	16
Engine Room	16
КОНТАКТЫ	18
Контактная информация	18
Телефоны	18

Время работы	18
Адрес	18

ХАРАКТЕРИСТИКИ

Основная информация

Тип судна: Моторная яхта

Модельный год: 1980

Год постройки: 1980

Год обновления: 2006

Страна: United States

Открытая палуба мостика: Да

Размеры

Длина общая: 131' 2" (39.98m)

Ширина: 25' 9" (7.85m)

Макс. осадка: 7' 8" (2.34m)

Скорость, вместимость и масса

Крейс. скорость: 13 Kts. (15 MPH)

Макс. скорость: 14 Kts. (16 MPH)

Чистый вес: 335 Pounds

Вместимость воды: 4450 Gallons

Объем топливного бака: 13581 Gallons

Размещение

Всего кают: 6

Корпус и палуба

Материал корпуса: Steel

Материал палубы: Teak

Комплектация корпуса: Full Displacement

Дизайнер корпуса: DeVoogt and Voon

Информация о двигателе

Двигатели: 2

Производитель: GM

Модель: 12-149

Тип двигателя: Inboard

Тип топлива: Diesel

ПОДРОБНОЕ ОПИСАНИЕ

Overview

SEAGULL OF CAYMAN, a well owned, well cared for Classic Canoe Stern Feadship, with 6 staterooms, including an on deck Master, and flybridge, is truly a delightful and rare yacht on today's market. It is obvious she has been blessed with a knowledgeable owner and crew, and perhaps most exciting of all; she is an unmolested classic yacht that has been upgraded with care and forethought.

Accommodations

SEAGULL'S interior is one of quiet elegance with an interior volume that feels much larger than her 131'. The main salon, with her original rich wood finish, creates the feel of a luxuriously appointed home.

Main Deck

A formal starboard entrance is amidships, opening to a beautiful curved bar and bar seating. Forward is the entrance to the galley, access to the pilothouse stairs and the lower crew quarters/engine room. Further forward, well separated is the entrance to the on Deck Master Stateroom. A Day Head is conveniently located aft of the Bar area. MASTER SUITE, upon entering, consists of a large private bath area with stall shower, vanity and sanitary facilities, all done in a beautiful marble. The center-line king bed has a panoramic view from both port and starboard windows, while directly forward is entertainment and two large walk in closets. MAIN SALON and DINING SALON, are both considerably larger than one would expect in a yacht this size, and are located amidships aft, with the Dining Salon offering both guest dining with storage for the various fine china, crystal and silver. A few steps aft to the Main Salon, with original Feadship joinery, and featuring a beautiful long curved couch, matching arm chairs on port. An original curved, built in bookcase by Feadship is on the aft section of the port salon. To starboard of the salon is an entertainment center, and desk. A custom wool carpet adorns the sole. Access to the guest accommodations is by a curved staircase, located on the starboard aft corner of the salon. The Aft Deck opens from double teak and glass doors, which serve to make these expansive areas even larger. A wall of windows completely surround the aft deck, offering the option to be open or air conditioned at one's choice. A beautiful curved teak settee mimics the curve of the canoe stern, with a matching curved coffee table. In the center of this expansive space resides a round glass topped table with seating for 10.

LOWER DECK, GUEST STATEROOMS

Five Guest Staterooms are located in this area: After going down the traditional Feadship

staircase and proceed forward, there are two mirror image staterooms, port and starboard. These offer the option of either twin beds or with a quick adjustment, a king bed stateroom. Both have entertainment centers and large ensuite bath with stall shower. Aft of these staterooms is the smallest of the guest staterooms, with a pair of single berths arranged in an over/under fashion. Regardless of being the smallest, this area still offers a large closet and ensuite head with stall shower. In the passage way aft there is both linen and towel storage. Opposite the staircase is the Fourth guest stateroom, which like the two forward staterooms offers the re-arrangement of the beds to be singles or full king. Ensuite bath and large closet. The aft most stateroom is one that is traditionally found on a canoe stern yacht, which follows the curve of the hull. This allows for large single beds on both sides, an ensuite bath and two large closets, while also offering the most floor space of any the guest staterooms. The entire guest stateroom area is finished to Feadship standards and woodwork.

Pilothouse

Accessed from the starboard side, just forward of the Galley; A visual delight with Feadship joinery, full size chart table, with drawers and space for all the electronic that could be desired. A fully functional suite of electronics is on board, with some due for updating. Please see the Electronics List Wing controls are Port and Starboard.

Captain's Cabin

Located behind the Pilothouse and like all other spaces on this yacht, is very large indeed. Featuring an island queen berth, two closets, full desk and book cases, with ensuite bath and stall shower. Adjacent to the Captain's cabin is a small watch cabin with one berth. There is a day head adjacent to this cabin.

Crew Lounge

Four staterooms each with two single berths ,ensuite baths and showers, for a total of eight crew in this area. Large and spacious crew lounge, with communications and entertainment. Crew galley, full laundry and tremendous storage

Crew Quarters

Four staterooms each with two single berths ,ensuite baths and showers, for a total of eight crew in this area. Large and spacious crew lounge, with communications and entertainment. Crew galley, full laundry and tremendous storage

Galley

Located on the main deck, amidships. This is a large L-shaped space with full service galley located on one portion of the L and running fore and aft. Accessed from the port side of the yacht.

- Stainless steel counters through-out
- Garland 6 burner
- Grill and two ovens
- Kenmore and Whirlpool microwave
- Deep fryer
- (3) Sub Zero refrigerators
- (1) Foster refrigerators/freezers
- (3) Larkin Freezers in laundry
- (3) Kitchen Aid dishwashers
- (1) Kitchen-Aid garbage disposal
- (3) Subzero icemakers
- (2) 50 gallon Whirlpool water heaters
- Dumb waiter to crew mess to galley

Deck Equipment

- (2) Remote controlled 14" searchlights
- Kahlenberg air horns
- Steen Electric Deck windlass
- (2) Pool anchors of 270 kg, with 300' of 3/4" stud link
- anchor chain on both anchors
- Boarding platform/ladder
- Cleaview screen in Pilothouse

Electrical System

Generators:

- (2) 99 kw Northern Lights, new 2006:
- hours: port: 1630 stbd. 3075 as of 8/2011
- Output: 110V/220V, 3-phase, 60 hz, 100 amp

Shore Power: (2) 208V, 3-phase, 60 hz, 100 amp; with ASEA converter/transformers shore power converters Chargers: Sentry, Larmarche, Newmar Switch Panel, both engine room and wheelhouse

Audio and Visual

Seatrack Sat system with 3 receivers (10) TV's

Electronics

Communication Systems

- Raytheon SSB
- (2) ICOM VHF's

Navigation Systems

- Furuno FR 71-12 color radar
- Furuno RDP-150 radar
- Simrad CP-44 plotter
- (2) Northstar 6100i plotters
- Simrad AP-50 autopilot
- Furuno RD 30
- SeaDepth and Temp
- Furuno FE 500 recording depth sounder
- B&G network depth sounder
- Furuno AIS
- Rayfax 500 weather fax
- Wind Indicator

Construction

In 2006 the General Motors main engines were subject to a complete in frame rebuild., and new generators installed Completed a full paint job at the same time

Laundry equipment

- (2) Maytag washers
- Kenmore and Maytag dryers

Mechanical Equipment

Machinery (2) General Motors 12-149 Diesels of 675 hp engines, with in frame rebuild in 2006,
Engine hours: 1500 port 1500 stbd. As of 9/1/2011 Twin disk
transmissions also rebuilt in late 2006 Above and below water exhausts Kobelt 3 station air
controls, port and starboard wing and pilothouse Village Marine water maker

A/C: CruiseAir chilled water system with 4 Technicold 5 ton chillers, new 2007

with most air handlers Vosper Stabilizers MK 12/2 Schottle Bow thruster, 35 hp three speed
 Capacities Fuel 13,580 U.S. gallons in 4 tanks Water 4,450 U.S.
 gallons Watermakers 1,200 U.S. gallons Black water
 150 US Gallons in MSD sewage system Lube Oil 60 U.S. gallons Village Marine
 SPW Watermaker Speed Cruising 12.5 knots 4,800 nm
 range Economical 10.0 knots 6,000 nm range Engine Room

The engine room is entered from aft of the crew quarters. Upon entering the engine room, you immediately understand why Feadship's are considered a premier yacht. From the placement of equipment, the quality of materials used and the excellent access to all important areas of the machinery spaces, a Feadship engine room has no rivals. It is apparent why marine engineers prefer to work on these yachts. Beyond the normal high quality machinery spaces, SEAGULL'S engine room has been maintained to the highest standards possible and shows the high level of pride taken by the chief engineer, captain, and owner.

Исключения

При продаже яхты исключаются личные вещи владельца.

Отказ от ответственности

Компания предоставляет описание судна или яхты добросовестно, но не может гарантировать точность этой информации, а также не ручается за техническое состояние. Покупатель должен проинструктировать своих агентов или оценщиков исследовать представленную информацию более подробно, по собственному желанию. Продажа судна или яхты, изменение цены или снятие с продажи будет происходить без предварительного уведомления.

ФОТОГРАФИИ



Bar



Master Bath



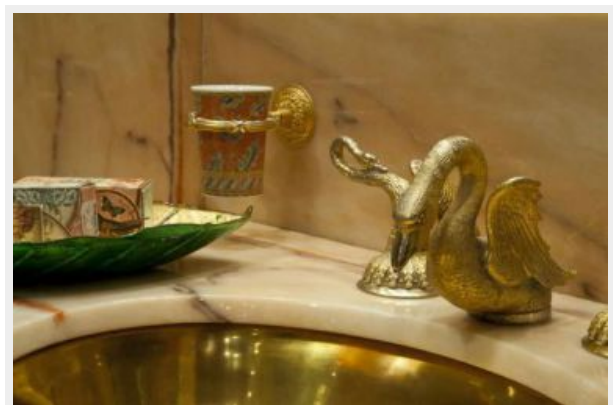
Salon



Dining



Sink



Master



AFT DECK



Master



Guest King Stateroom



Guest Twin Stateroom (converts to King berth)



Master Bath



Side Deck



Master On Deck



Main Deck Bar



Master Bath



Galley



Galley



Pilot House



Galley



Pilothouse



Boat Deck



Boat Deck



Boat Deck



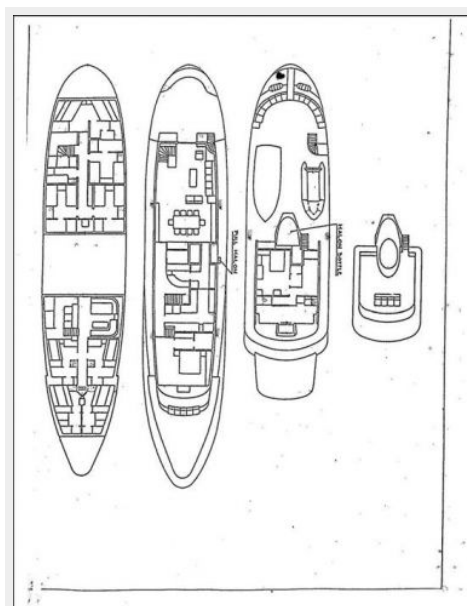
Engine Room



Flybridge



Engine Room





КОНТАКТЫ

Андрей Шестаков (Andrey Shestakov) – ведущий яхтенный брокер отдела продаж яхт и судов компании Shestakov Yacht Sales Inc. Официальный представитель Shestakov Yacht Sales Inc. для русскоговорящих клиентов в центральном офисе компании в Майами/Форт Лодердейл/Флорида/США.

Контактная информация

Email: andrey@shestakovyachtsales.com

Web: shestakovyachtsales.com

Телефоны

Краснодарский край: **+7(918)465-66-44**

США, Майами, Флорида: **+1(954)274-4435**

Время работы

Понедельник – Суббота: **9:00 - 21:00**
EDT

Воскресенье: **Закрито**

Адрес



Harbour Towne Marina, 850 NE 3rd St,
STE 213, Dania, FL 33004