

TEMPTRESS — HATTERAS



Судостроитель: HATTERAS

Год постройки: 1971

Модель: Моторная яхта

Цена: **ЦЕНА ЯХТЫ ПО ЗАПРОСУ**

Местонахождение: United States

Длина общая: 58' 5" (17.81m)

Ширина: 15' 10" (4.83m)

Мин. осадка: 4' 0" (1.22m)

Крейс. скорость: 15 Kts. (17 MPH)

Макс. скорость: 19 Kts. (22 MPH)

Купить **Temptress — HATTERAS** а также выбрать подходящую вам яхту из нашего каталога яхт вам поможет опытный яхтенный брокер Андрей Шестаков. На сегодняшний день компания **Shestakov Yacht Sales Inc.** имеет большое количество яхт в собственном списке продаж, а также тесно сотрудничает со всеми крупными яхтенными производителями по всему миру.

Для того чтобы купить яхту **Temptress — HATTERAS** а также проконсультироваться по любому вопросу связанному с покупкой, продажей, чартером яхт позвоните по телефону **+7(918)465-66-44**.

ОГЛАВЛЕНИЕ

ОГЛАВЛЕНИЕ	2
ХАРАКТЕРИСТИКИ	4
Обзор	4
Основная информация	4
Размеры	4
Скорость, вместимость и масса	4
Размещение	5
Корпус и палуба	5
Информация о двигателе	5
ПОДРОБНОЕ ОПИСАНИЕ	6
Overview	6
Accommodations	6
Hull and Deck	9
Engines & Mechanical Equipment	9
Comments	9
Исключения	10
Отказ от ответственности	10
ФОТОГРАФИИ	11
Pilot House with Raymarine RL80CRC	11
Underway w/Custom Pilot House Door Open	11
Pilothouse Helm Chair & Sofa Seating	11
Upper Salon Custom Chairs	11
Custom full sized "L" sofa & endtables w/storage	12
Upper Salon looking forward	12
Custom TV Capinet	12
Custom TV & A/C Cabinet w/granite counter	12
Hand painted Chinese Chest for storage	12
Dining Salon w/seating for 6 - 8	12

Dining Salon Wet Bar & Ice Maker	13
Galley Dinette with Avonite top	13
Galley w/Avonite counter & S/S Appliances (1)	13
Galley w/Hi-End S/S Appliances (2)	13
Galley Full Size LG S/S French Door Fridge w/freezer drawer	14
Fwd Cabin - Ostrich Texture Bulkheads	14
Companionway from Dining Salon to Staterooms	14
Guest Stateroom to Port	14
Master Stateroom w/Custom Bedding	15
Master Stateroom looking fwd	15
Master SR Head/Shower (All heads done similar)	15
Master Stateroom Large Hanging Closet	15
Aft deck custom enclosure w/line handling area	15
Looking fwd from Custom Pilothouse door	15
Starboard Profile w/Custom Arch & 11 ft Whaler	16
Looking Aft from the bow	16
Stbd Hull - Waterline	16
Stern w/teak swim patform	16
Haul Out	16
Routine Maintenance	16
КОНТАКТЫ	17
Контактная информация	17
Телефоны	17
Время работы	17
Адрес	17

ХАРАКТЕРИСТИКИ

Обзор

Tempress is a stunning example of the classic Hatteras 58 Tri-Cabin Motor Yacht. Retaining her original beauty, charm and excellent joinery, she was extensively refurbished in 1985, 1991 and 2007. Her owners have lovingly cared for this beautiful vessel with continuous upgrades and improvements during her life on the waters of the Chesapeake Bay and Potomac River. Sliding Pilot House Doors were added port and starboard in the 2007 re-fit.

Основная информация

Тип судна: Моторная яхта	Подкатегория: Tri-Cabin
Модельный год: 1971	Год постройки: 1971
Год обновления: 2007	Страна: United States
Открытая палуба мостика: Да	

Размеры

Длина общая: 58' 5" (17.81m)	Ширина: 15' 10" (4.83m)
Мин. осадка: 4' 0" (1.22m)	Трапы: 23' 6" (7.16m)

Скорость, вместимость и масса

Крейс. скорость: 15 Kts. (17 MPH)	Макс. скорость: 19 Kts. (22 MPH)
Водоизмещение: 63000 Pounds	Вместимость воды: 275 Gallons
Вместимость сточного бака: 50 Gallons	Объем топливного бака: 950 Gallons

Размещение

Всего кают: 3

Всего коек: 4

Всего ком. состава: 3

Корпус и палуба

Материал корпуса: Fiberglass

Материал палубы: Fiberglass

Комплектация корпуса: Modified V-Hull

Цвет корпуса: Cloud White

Отделка корпуса: Fiberglass

Дизайнер корпуса: J. Hargrave

Дизайнер экстерьера: Jack Hargrave

Информация о двигателе

Двигатели: 2

Производитель: Detroit Diesel / Johnson & Towers

Модель: 12V71N

Тип двигателя: Inboard

Тип топлива: Diesel

ПОДРОБНОЕ ОПИСАНИЕ

Overview

Tempress is a stunning example of the classic Hatteras 58 Tri-Cabin Motor Yacht. Retaining her original beauty, charm and excellent joinery, she was extensively refurbished in 1985, 1991 and 2007. Her owners have lovingly cared for this beautiful vessel with continuous upgrades and improvements during her life on the waters of the Chesapeake Bay and Potomac River.

The *Tempress* is appointed with three ample staterooms, three heads, two of which have separate stall showers and an up-to-date stainless steel galley down with comfortable galley seating for four. The full sized mid-ship dining salon offers sit down dining for six to eight, incredible storage and a wet bar. The customized pilothouse and upper main salon beckon family and guests to enjoy spacious air conditioned luxury amidst custom furnishings, carpeting and teak and holly flooring. New matching helm seats add comfort and convenience to an accommodating flybridge, large foredeck with seating and aft on-deck seating and line handling area make this yacht great for entertaining. The *Tempress* is an absolute pleasure whether for weekends, a cocktail cruise, vacation cruising or as a live-aboard.

Accommodations

The *Tempress* is an incredible example of classic Hatteras. Her interior decor, last updated in 2007/2011 shows beautifully, incorporating all the matched tiger striped teak so prized in the earlier Hatteras with custom furnishings, lighting, and an exhaustive list of updates.

Easy access to the fully enclosed pilot house and aft upper main saloon is provided thru custom hand crafted side entry sliding doors added to this classic lady in 2007. The main salon, aft of the pilot house was created with the addition of a custom, hard aft bulkhead with an expanse of window and aft door when the *Tempress* was first purchased by the current owner and spent the winter in the shed for her first makeover. The aft line handling deck is comfortable, appealing and extends the wonderful livability and flow of the main deck. The granite topped built-in entertainment center houses the flat screen television and air conditioning, low pile tight weave tropical carpeting, a custom made full sized "L" shaped sofa, end-tables and cocktail tables all provide incredible storage and two custom made upholstered chairs and cocktail table round out the charm of this warm, comfortable and inviting space.

The 6.5' beautifully upholstered sofa in the pilot house sits atop eight storage drawers for all of the piloting essentials and makes the pilot house an intricate part of the on-deck cruising/entertainment center. The leather upholstered helm seat can be removed from the pilot house and affixed to the floor of the main saloon for added seating during non-cruising times.

Forward and down three steps you descend into a large Dining Saloon, a wonderfully unusual feature for a yacht of this size. The storage and flexibility of this room is incredible. Again the original teak overlay and joinery remains to add charm to this spacious dining saloon. Storage abounds in a hand painted Chinese chest, ample built in cabinetry that houses everything from a wine rack to the two custom made cabinets Port and Starboard, that were added to house the ample fore deck sun seat cushions.

Continue forward down three beautifully finished teak steps to a full width Galley/Dinette that incorporates a well designed and functional galley that includes a four burner black ceramic GE Monogram stove, stainless steel GE Profile Convection Oven/Microwave with multi-speed vent, stainless steel Kitchen Aid Dishwasher, full sized stainless steel LG French Door Refrigerator with freezer draw. The ample Avonite counter top incorporates a deep molded sink for easy cleaning and is finished off with chrome faucet, Kitchen Aid disposal and is accessorized with an over the sink port light that was added for both visibility and good cross ventilation.

Access to the main engines, generator and batteries for minimum maintenance is also from this area, along with hydraulic hatch access to the galley based hot water heater and V-Berth storage forward of the galley.

The Guest/Captain's cabin is located forward of the galley with ample separate head/shower, and storage, including a cedar lined closet. Well ventilated with overhead hatch, air conditioning and heat the original upper and lower single berth bed arrangement was redesigned to provide an ample single plus berth, with beautiful designer wall coverings, teak and holly flooring and custom made bedding and extensive storage under.

Conveniently located just four steps below and aft of the dining saloon you find the custom cabinet housing a stacked full size Maytag washer and dryer – an absolute must

for cruising and live aboard.

The Guest Cabin to Port is bright with custom bed linens for twin side by side bunks in the traditional styling of Hatteras, ample port lights for light, individually air conditioned with a large hanging locker and eight under-bunk drawers that provide excellent clothing storage for guests. Two four drawer nightstands provide additional storage space. The head and stall shower is located across the companionway and opposite this cabin which also was refurbished with new countertops, molded sink, hardware, faucet, cabinet laminates, flooring, lighting and window treatments.

The Master Cabin is located aft and is a full width cabin. The queen-sized berth is located to Port and athwartship. Large double hanging cedar lined closet and ten drawers provide good clothes storage. This cabin was refurbished with custom bedding, mattress, lighting and carpet. The master head is ensuite to Starboard with stall shower, new vanity, sink, hardware, faucet and electric VacuFlush head as do the other two heads.

All of the interior headliner and overhead dimmer controlled lighting has been upgraded throughout. Draperies and honey coned blinds are attractive and coordinated throughout to provide both privacy and insulation from the elements.

The updating of the flybridge includes a new aluminum arch that houses the radar, GPS, anchor light and search light; the arch is cantilevered to allow you to easily lower the arch aft when needed. The new windshield and substantial stainless steel handrail are angled forward. Dual helm seats and an expansive bimini provide excellent visibility and comfortable cruising. The *Temptress*' exterior was updated with Awlgrip-2000 Cloud White and her bridge and hull are accented with black striping. New custom made engine louvers that ride flush to the hull provide a sleek update that also adds ease for placing fenders where needed. Her teak inlaid bow pulpit, handrails and swim platform add just the right touch of wood trim with limited maintenance.

The *Temptress* is clean, well maintained, without leaks, mold, blisters or other hidden issues and is available for inspection by appointment only. The *Temptress* comes fully furnished, however, owner's personal items and her extensive art work do not convey.

Hull and Deck

Fiberglass hull, deck, deckhouse and flybridge were sanded, primed and painted in late 2007; Hull color is Awlgrip-2000 Cloud White with black accent stripes and window frames (Awlgrip-2000); Non-skid on deck; Varnished teak exterior trim; Teak swim platform; S/S swim ladder; Bow pulpit with rails; Side stanchions and varnished teak hand rails; Two donnage boxes on foredeck; UMT 1000 lb low profile davit; Boston Whaler 11' dinghy 1987 with cover; 20hp Johnson outboard engine 1988.

* Modern Maid electric anchor windlass * Swim platform

* Danforth anchor w/250' chain

* Boat hooks

* Docklines

* Fenders

* Flare kit

* Flagstaff & ensign

* Life jackets

* Throw cushions

* CG safety package

* MarQuipt Sea Stair

Engines & Mechanical Equipment

T/525hp Detroit Diesel/Allison 12V71N diesel engines; Fresh water cooled; Raw water strainers; Engine block heaters; Fuel filters; Engine fuel shut-off valve; Allison transmission 2:1 ratio transmission; (2) extra props; Hydraulic steering; Trim tabs; (5) Cruise-Air reverse cycle air conditioning; Electric heating units in all cabins; White full sized Maytag washer and dryer; Onan 15kW generator; Rule electric bilge pumps; Kiddie fire extinguishing system: (6) Fire extinguishers; 50 gal.holding tank system.

Comments

The *Temptress* is clean, well maintained, without leaks, mold, and blisters or other hidden issues and is available for inspection by appointment only. The *Temptress* comes fully furnished, however, owner's personal items and her extensive art work do not convey.

Исключения

При продаже яхты исключаются личные вещи владельца.

Отказ от ответственности

Компания предоставляет описание судна или яхты добросовестно, но не может гарантировать точность этой информации, а также не ручается за техническое состояние. Покупатель должен проинструктировать своих агентов или оценщиков исследовать представленную информацию более подробно, по собственному желанию. Продажа судна или яхты, изменение цены или снятие с продажи будет происходить без предварительного уведомления.

ФОТОГРАФИИ

Underway w/Custom Pilot House Door Open



Pilot House with Raymarine RL80CRC



Pilothouse Helm Chair & Sofa Seating



Upper Salon Custom Chairs



Upper Salon looking forward



Custom full sized "L" sofa & endtables w/storage



Custom TV Capinet



Custom TV & A/C Cabinet w/granite counter



Hand painted Chinese Chest for storage



Dining Salon w/seating for 6 - 8



Dining Salon Wet Bar & Ice Maker



Galley Dinette with Avonite top



Galley w/Avonite counter & S/S Appliances (1)



Galley w/Hi-End S/S Appliances (2)



**Galley Full Size LG S/S French Door Fridge
w/freezer drawer**

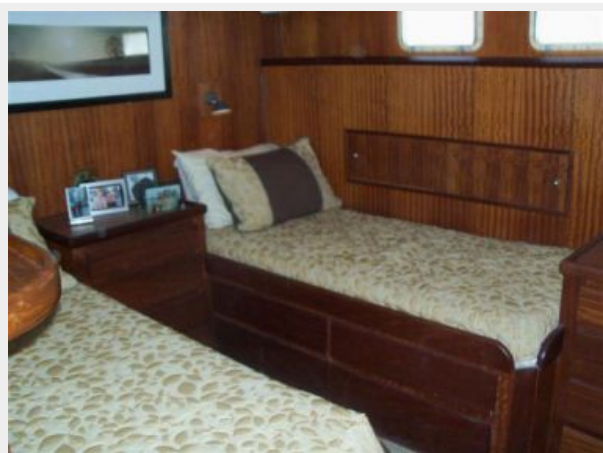


Fwd Cabin - Ostrich Texture Bulkheads



**Companionway from Dining Salon to
Staterooms**

Guest Stateroom to Port



Master Stateroom w/Custom Bedding



Master Stateroom looking fwd



Master Stateroom Large Hanging Closet



Master SR Head/Shower (All heads done similar)



Aft deck custom enclosure w/line handling area



Looking fwd from Custom Pilothouse door



Starboard Profile w/Custom Arch & 11 ft Whaler



Looking Aft from the bow



Stbd Hull - Waterline



Stern w/teak swim platform



Haul Out



Routine Maintenance



КОНТАКТЫ

Андрей Шестаков (Andrey Shestakov) – ведущий яхтенный брокер отдела продаж яхт и судов компании Shestakov Yacht Sales Inc. Официальный представитель Shestakov Yacht Sales Inc. для русскоговорящих клиентов в центральном офисе компании в Майами/Форт Лодердейл/Флорида/США.

Контактная информация

Email:
andrey@shestakovyachtsales.com

Web: shestakovyachtsales.com

Телефоны

Краснодарский край: +7(918)465-66-44

США, Майами, Флорида: +1(954)274-4435

Время работы

**Понедельник – Суббота: 9:00 - 21:00
EDT**

Воскресенье: Закрыто

Адрес



**Harbour Towne Marina, 850 NE 3rd St,
STE 213, Dania, FL 33004**