

## AMARILLI — SAN LORENZO



**Builder:** San Lorenzo

**Year Built:** 1986

**Model:** Motor Yacht

**Price:** PRICE ON APPLICATION

**Location:** Italy

**LOA:** 56' 6" (17.20m)

**Beam:** 17' 1" (5.20m)

**Min Draft:** 3' 8" (1.10m)

**Cruise Speed:** 22 Kts. (25 MPH)

**Max Speed:** 28 Kts. (32 MPH)

Our experienced yacht broker, Andrey Shestakov, will help you choose and buy a yacht that best suits your needs **AMARILLI — San Lorenzo** from our catalogue. Presently, at Shestakov Yacht Sales Inc., we have a wide variety of yachts available on our sale's list. We also work in close contact with all the big yacht manufacturers from all over the world.

If you would like to buy a yacht **AMARILLI — San Lorenzo** or would like help answering any questions concerning purchasing, selling or chartering a yacht, please call **+1(954)274-4435**

---

# TABLE OF CONTENTS

---

TABLE OF CONTENTS	2
SPECIFICATIONS	3
Overview	3
Basic Information	3
Dimensions	3
Speed, Capacities and Weight	3
Accommodations	3
Hull and Deck Information	4
Engine Information	4
DETAILED INFORMATION	5
Deck Equipment	5
Electrical System	5
Electronics and Navigational Equipment	5
Exclusions	5
Disclaimer	5
PHOTOS	6
CONTACTS	8
Contact details	8
Telephones	8
Office hours	8
Address	8

---

# SPECIFICATIONS

---

## Overview

---

**GREAT OPPORTUNITY**

## Basic Information

---

**Category:** Motor Yacht

**Sub Category:** Classic

**Model Year:** 1986

**Year Built:** 1986

**Refit Year:** 1991

**Refit Type:** Engines

**Country:** Italy

**Fly Bridge:** Yes

## Dimensions

---

**LOA:** 56' 6" (17.20m)

**Beam:** 17' 1" (5.20m)

**Min Draft:** 3' 8" (1.10m)

## Speed, Capacities and Weight

---

**Cruise Speed:** 22 Kts. (25 MPH)

**Max Speed:** 28 Kts. (32 MPH)

**Water Capacity:** 264.172052 Gallons

**Fuel Capacity:** 898.1849768 Gallons

## Accommodations

---

**Total Cabins:** 3

**Sleeps:** 6

**Total Heads:** 3

**Crew Cabin:** 1

**Crew Sleeps:** 2

**Crew Heads:** 1

---

## Hull and Deck Information

---

**Hull Material:** Fiberglass

**Deck Material:** Fiberglass Sandwich

**Hull Configuration:** Planing

**Hull Finish:** Iron

---

## Engine Information

---

**Engines:** 2

**Manufacturer:** General Motors

**Model:** 8V

**Engine Type:** Inboard

**Fuel Type:** Diesel

---

## DETAILED INFORMATION

---

### Deck Equipment

---

Teak cockpit Teak sidedecks Hydraulic gangway Cockpit cushions Cockpit table Swimming ladder Cockpit shower Radar reflector Tender Liferaft

### Electrical System

---

Electric bilge pump Manual bilge pump Battery charger Air conditioning Heating Hot water Fresh water maker Oven Electric head Refrigerator Deep freezer

Shore power inlet Generator 16 Kw

12/24/220 Volt

### Electronics and Navigational Equipment

---

Depthsounder Log-speedometer Plotter Autopilot Compass GPS VHF Radar TV set VCR Radio CD player Cockpit speakers

### Exclusions

---

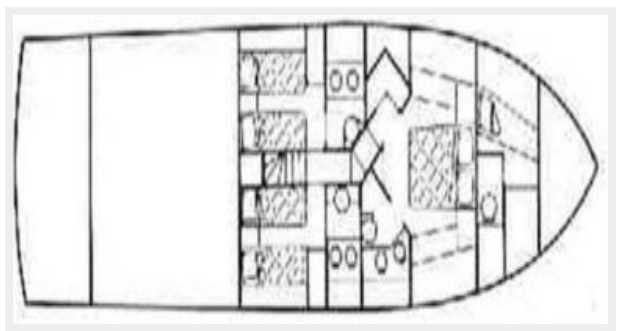
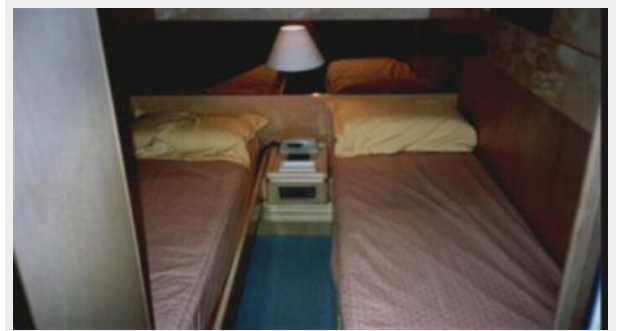
Owner's personal belongings.

### Disclaimer

---

The Company offers the details of this vessel or yacht in good faith but cannot guarantee or warrant the accuracy of this information nor warrant the condition of the vessel. A buyer should instruct his representatives, agents, or his surveyors, to investigate such details as the buyer desires validated. This vessel or yacht is offered subject to prior sale, price change, or withdrawal without notice.

# PHOTOS





# CONTACTS

---

Andrey Shestakov, leading yacht broker of the sales department of Shestakov Yacht Sales Inc. Shestakov Yacht Sales Inc., the official representative of the Miami/Fort Lauderdale FL headquarters.

## Contact details

---

Email: [andrey@shestakovyachtsales.com](mailto:andrey@shestakovyachtsales.com)

Web: [shestakovyachtsales.com/en/](http://shestakovyachtsales.com/en/)

## Telephones

---

USA: +1(954)274-4435

## Office hours

---

Monday – Saturday: **9:00 - 21:00** EDT

Sunday: **closed**

## Address

---



Harbour Towne Marina, 850 NE 3rd St,  
STE 213, Dania, FL 33004