

NO NAME — TOPAZ



Builder: TOPAZ

Year Built: 1986

Model: Sport Fisherman

Price: PRICE ON APPLICATION

Location: United States

LOA: 36' 0" (10.97m)

Beam: 13' 0" (3.96m)

Min Draft: 3' 0" (0.91m)

Cruise Speed: 20 Kts. (23 MPH)

Max Speed: 25 Kts. (29 MPH)

Our experienced yacht broker, Andrey Shestakov, will help you choose and buy a yacht that best suits your needs **No Name — TOPAZ** from our catalogue. Presently, at Shestakov Yacht Sales Inc., we have a wide variety of yachts available on our sale's list. We also work in close contact with all the big yacht manufacturers from all over the world.

If you would like to buy a yacht **No Name — TOPAZ** or would like help answering any questions concerning purchasing, selling or chartering a yacht, please call **+1(954)274-4435**

TABLE OF CONTENTS

TABLE OF CONTENTS	2
SPECIFICATIONS	4
Basic Information	4
Dimensions	4
Speed, Capacities and Weight	4
Hull and Deck Information	4
Engine Information	4
DETAILED INFORMATION	5
Accommodations	5
Cabin	5
Head	5
Helm Deck	6
Deck Equipment	6
Electrical System	7
Electronics and Navigational Equipment	7
Engine /Mechanical Equipment	8
Galley	8
Forward Berth	9
Tower	9
Exclusions	9
Disclaimer	9
PHOTOS	10
Cockpit	10
Tower	10
Helm	10
Controls	10
Bow	10
Cockpit	10

Forward Berth	11
Dining	11
Galley Area	11
Head	11
Engines	11
CONTACTS	12
Contact details	12
Telephones	12
Office hours	12
Address	12

SPECIFICATIONS

Basic Information

Category: Sport Fisherman

Sub Category: Express

Model Year: 1986

Year Built: 1986

Country: United States

Cockpit: Yes

Dimensions

LOA: 36' 0" (10.97m)

Beam: 13' 0" (3.96m)

Min Draft: 3' 0" (0.91m)

MFG Length: 36' 0" (10.97m)

Speed, Capacities and Weight

Cruise Speed: 20 Kts. (23 MPH)

Max Speed: 25 Kts. (29 MPH)

Displacement: 18000 Pounds

Water Capacity: 50 Gallons

Fuel Capacity: 300 Gallons

Hull and Deck Information

Hull Material: Fiberglass

Engine Information

Engines: 2

Manufacturer: Caterpillar

Model: 3208

Engine Type: Inboard

Fuel Type: Diesel

DETAILED INFORMATION

Accommodations

Owned by one of the East Coast's premier Offshore fishing experts, every feature of this express sportfish has been meticulously customized and built in by the current owner with a goal of getting to and catching the largest saltwater gamefish with efficiency and economy. Seriously upgraded features include Simrad NSO electronics through including a 3kw transducer for crystal clear bottoms scan to well over 2000 feet. A 100 gallon cockpit livewell and workstation. Interior and exterior retrofit by CA Marine of Pompano Beach, FL features include Awlgrip paint throughout, large cockpit and helm deck area that will offer comfort to anyone wishing to fish or cruise from this exquisite custom boat. A centrally located salon door allows access to the cabin. There is a private head with separate shower to port, dining to starboard, galley to port, and a large bunk arrangement forward. The cabin is completed with teak wood and custom matching fabrics. Flooring is teak and holly.

Cabin

- Sofa to port with dining and storage
- CruisAir A/C with SMX controls
- JL surround system with Clarion head
- Accent lighting
- Teak wood finish
- Teak and holly flooring
- Spreader lights

Head

Located to Port

- Shower head

- Teak and holly sole
- Vacuflush head with holding
- Vanity with sink

Helm Deck

- Console to starboard
- CA Marine custom features include
 - Electronics dash upper and lower station
 - Awlgrip paint completed 2008 Hull” ice blue” All other painted areas “bright white”
 - Cockpit bait/work station with integral 100 gal livewell
 - Built in drink box
 - Built in fish box
 - Spray rails
- Engine room access
- Bluewater tower
- Full enclosure
- Stereo speakers
- Center cabin door location
- Bench seating with storage beneath
- Custom Simrad Electronics layout
- Twin helm seats
- Overhead lighting
- Spreader lights

Deck Equipment

- Bow pulpit
- Bow rail
- Lewmar windlass
- (2) Underwater lights

Electrical System

- 7 KW Phasar generator (1 year old)
- 50 amp shore power
- Ship's service electric panel in salon
- True Charge Battery charger
- AC/DC Systems

Electronics and Navigational Equipment

- Fully integrated Simrad NSO dual station electronics package including
 - 2x 15" lower station screens
 - 1x 8" NSE upper station screen
 - Radar 12kw broadband radar
 - Chart plotter
 - Sonar w/ R309 3kw transducer w/ BSM2 Black Box
 - Auto pilot
- Telephone style VHF upper and lower station
- Trim tab controls
- Simrad AP 11 autopilot
- (2) Richie compass
- Engine gauges and controls
- JL Audio system w/ Clarian head control

- Sirius Sat. weather

Engine /Mechanical Equipment

- 3208 Caterpillars 2x 375hp
- Oil change system
- Fuel transfer
- 16,000 BTU A/C compressor (1 year old)
- Macerator (new)
- Trim tabs
- Engine room blowers
- Bilge pumps
- Racor filters
- Dripless shaft seals
- Hot water heater
- Battery switches
- Engine batteries include 2x 8d, 2x 31 series
- Glendinning cablemaster
- Fire suppression system
- ZF Transmissions 1.5:1 reduction ratio
- 16,000 BTU A/C compressor (1 year old)
- Engine synchronizer
- Trolling Valves

Galley

Located to port

- Sharp microwave oven

- Norcold refrigerator
- Storage
- Drawers
- Cabinets sink

Forward Berth

Queen arrangement

- Custom decor, pillows and shams
- Teak and holly floor
- Anchor locker access

Tower

Bluewater (9) Step tower

- Buggy top
- Fiberglass platform
- Padded bench seat with backrest
- Padded belly band

Exclusions

Owner's personal belongings.

Disclaimer

The Company offers the details of this vessel or yacht in good faith but cannot guarantee or warrant the accuracy of this information nor warrant the condition of the vessel. A buyer should instruct his representatives, agents, or his surveyors, to investigate such details as the buyer desires validated. This vessel or yacht is offered subject to prior sale, price change, or withdrawal without notice.

PHOTOS

Cockpit



Tower



Helm



Controls



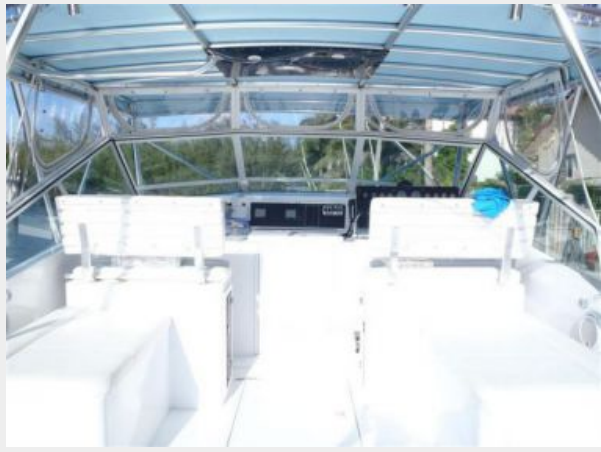
Bow



Cockpit



Forward Berth



Dining



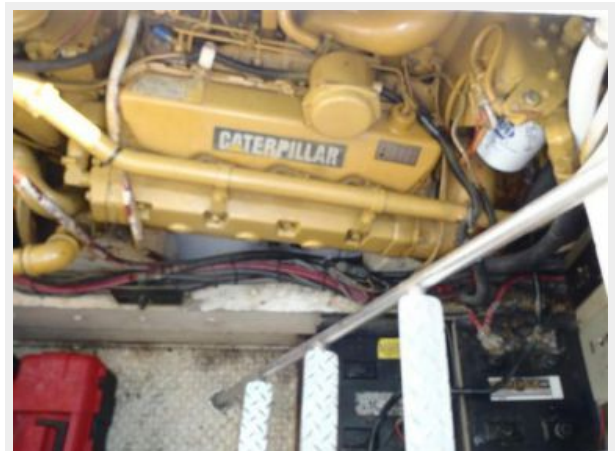
Galley Area



Head



Engines



CONTACTS

Andrey Shestakov, leading yacht broker of the sales department of Shestakov Yacht Sales Inc. Shestakov Yacht Sales Inc., the official representative of the Miami/Fort Lauderdale FL headquarters.

Contact details

Email: andrey@shestakovyachtsales.com

Web: shestakovyachtsales.com/en/

Telephones

USA: +1(954)274-4435

Office hours

Monday – Saturday: **9:00 - 21:00** EDT

Sunday: **closed**

Address



Harbour Towne Marina, 850 NE 3rd St,
STE 213, Dania, FL 33004