

## **DON'T WORRY — CRESCENT BEACH**



**Судостроитель:** CRESCENT BEACH

**Год постройки:** 1995

**Модель:** Моторная яхта

**Цена:** **ЦЕНА ЯХТЫ ПО ЗАПРОСУ**

**Местонахождение:** United States

**Длина общая:** 116' 0" (35.36m)

**Ширина:** 24' 0" (7.32m)

**Макс. осадка:** 6' 5" (1.96m)

**Крейс. скорость:** 17 Kts. (20 MPH)

**Макс. скорость:** 20 Kts. (23 MPH)

Купить Don't Worry — CRESCENT BEACH а также выбрать подходящую вам яхту из нашего каталога яхт вам поможет опытный яхтенный брокер Андрей Шестаков. На сегодняшний день компания Shestakov Yacht Sales Inc. имеет большое количество яхт в собственном списке продаж, а также тесно сотрудничает со всеми крупными яхтенными производителями по всему миру.

Для того чтобы купить яхту Don't Worry — CRESCENT BEACH а также проконсультироваться по любому вопросу связанному с покупкой, продажей, чартером яхт позвоните по телефону **+7(918)465-66-44**.

# ОГЛАВЛЕНИЕ

ОГЛАВЛЕНИЕ	2
ХАРАКТЕРИСТИКИ	5
Обзор	5
Основная информация	5
Размеры	5
Скорость, вместимость и масса	6
Размещение	6
Корпус и палуба	6
Информация о двигателе	6
ПОДРОБНОЕ ОПИСАНИЕ	7
Accommodations	7
List of Improvements	8
Galley/Laundry	10
Mechanical	10
Electronics & Navigation	11
Electrical	12
Deck & Hull	13
Safety	13
Remarks	14
Исключения	14
Отказ от ответственности	14
ФОТОГРАФИИ	16
Master Stateroom	16
Guest Stateroom	16
Forward Stateroom	16
Guest Stateroom	16
Flybridge	16
Forward Deck	16

Guest Head	17
Captain's cabin	17
Large foredeck with sunpad and dual anchors	17
original layout has been modified	17
24' beam and walkaround decks	18
Large extended integral swim platform for watersports	18
large covered aft deck	18
aft deck seating for 12	18
Large eat-in galley	18
All new galley 2009	18
Dinette with extra freezer storage for'd	19
salon looking for'd	19
salon theater	19
salon formal wet bar	19
on deck powder room	20
carbon fibre helm with updated navionics	20
salon looking aft	20
flybridge helm - 4 Stidd chairs	20
aft flybridge with sunbed and 2500# davit	20
Flybridge formal wet bar	21
master looking aft	21
large master walk-in shower	21
Stern shot	21
tender storage aft flybridge	21
<b>КОНТАКТЫ</b>	<b>22</b>
Контактная информация	22
Телефоны	22
Время работы	22
Адрес	22



# ХАРАКТЕРИСТИКИ

## Обзор

"Don't Worry" represents an exceptionally well built Crescent Motor Yacht that was built on an ABS certified Westport hull. She has only had two owners in her history and had an extensive 2 year interior refit by the current owner, completed in 2010 Her interior was completely upgraded in 2010 to including refinished and new cabinetry, all new soft goods, including overheads, wall panelling, flooring, countertops, all new bathrooms, countertops and hard surfaces, fixtures, lighting, appliances, audio visual, navionics.

Offering a generous 24' beam, with walk-around decks and large aft deck, she is well equipped with Naiad stabilizers, bow thruster, water maker, new heads including Headhunter USCG certified sewage treatment system & twin Northern Lights 55KW generators (new 2004 -only 3,300 original hours) along with extensive modern electronics package (2009). This vessel shows well and must be sold!

## Основная информация

**Тип судна:** Моторная яхта

**Подкатегория:** Pilothouse

**Модельный год:** 1995

**Год постройки:** 1995

**Год обновления:** 2010

**Страна:** United States

**Открытая палуба мостика:** Да

## Размеры

**Длина общая:** 116' 0" (35.36m)

**Длина по ватерлинии:** 97' 0" (29.57m)

**Ширина:** 24' 0" (7.32m)

**Макс. осадка:** 6' 5" (1.96m)

## Скорость, вместимость и масса

---

**Крейс. скорость:** 17 Kts. (20 MPH)

**Макс. скорость:** 20 Kts. (23 MPH)

**Чистый вес:** 198 Pounds

**Вместимость воды:** 1000 Gallons

**Вместимость сточного бака:** 350 Gallons **Объем топливного бака:** 6395 Gallons

## Размещение

---

**Всего кают:** 5

**Всего коек:** 6

**Спальные места:** 9

**Всего ком. состава:** 6

**Каюты экипажа:** 2

**Койки экипажа:** 3

**Спальных мест экипажа:** 3

**Комм. состав экипажа:** 1

## Корпус и палуба

---

**Материал корпуса:** Fiberglass

**Материал палубы:** Fiberglass

**Комплектация корпуса:** Semi-Displacement

**Цвет корпуса:** White

**Отделка корпуса:** Stainless Steel

**Дизайнер корпуса:** Jack W. Sarin Naval Architects Inc.

## Информация о двигателе

---

**Двигатели:** 2

**Производитель:** MTU

**Модель:** 12V396

**Тип двигателя:** Inboard

**Тип топлива:** Diesel

---

# ПОДРОБНОЕ ОПИСАНИЕ

---

## Accommodations

---

DON'T WORRY accommodates eight owners and guests in four staterooms, plus a Captains cabin or 5th stateroom for'd with ensuite head and 2 crew cabins aft - to port are two single berths and the starboard cabin features one berth. They share a head and shower area aft and they both have TVs. The crew quarters lead to the engine room with separate air conditioned control room for monitoring all functions.

The large covered aft deck offers dining for up to 12. Access to the large teak integral swim platform port and stb'd and also the walk-around side decks for easy access all around the vessel. Aft deck also houses emergency access/egress to the engineroom and crew quarters aft.

The main salon is accessed from the aft deck via double sliding doors, which also house pocket screen doors. The complete interior of this rugged vessel has been extensively upgraded throughout, offering a contemporary, sophisticated look. The salon is divided into two main areas, seating/lounging aft with formal wet bar and theater seating with 60" surround sound TV forward.

There is an on deck powder room to stb'd on way to the updated "country galley" forward with U shaped dinette. Forward from the "country galley" is an island queen VIP with ensuite head. Also located here is a double cabin with ensuite head, which could be used as a Captains cabin or a 5th stateroom. Two sets of Miele stack washer & dryers are located in both guest foyers.

The full beam king Master Stateroom, accessed from the amidship guest foyer features his-and-hers wardrobes and a full beam bathroom with a large walk-in shower.

Aft to port is the island queen VIP with ensuite head with shower To starboard is the Twin guest stateroom also with an en suite head. All guest accommodations have new mattresses (2010), digital climate controls, combo Sharp flat screen LCD TV's with built in DVD.

The oversized teak swim platform offers plenty of room for watersports set-up, with shower, swim ladder and floating dock access. Shorepower is also located here with Glendinning reelmaster. The Flybridge, accessed from the midships raised pilothouse, has both sunning and shaded areas and can accommodate a 40 person cocktail party or BBQ lunch for eight. Formal wetbar with drink refrigerator and icemaker. The four Stidd helm chairs allow great viewing while

cruising.

The Captain has all the navigation aids at his disposal both in the large updated pilothouse and at the central flybridge station with fold out pneumatic wing stations coming out of the side house port and stb'd, making docking a breeze. There is also a hydraulic fold down radar arch.

See the extensive list of upgrades!

## List of Improvements

---

This vessel finished an extensive multi-million dollar two year makover /refit in 2010, which shows from her sophisticated contemporary interior, to her updated navioncs and audio visual equipment, which has modernized a well built and thought out yacht.

The interior of this vessel was completely upgraded throughout, with **all new soft goods**, hard surfaces, woodwork replaced or refinished, new flooring, new wall coverings and new overheads.

- Extensive lighting throughout . New lighting system incorporated with the Professional Computerized Control System in all guest areas, including "all lights off switch" at salon entrance/exit.
- Extensive audio visual, with 9 satellite decoder boxes and built-in controls.
- New Headhunter sewage treatment system (TW-50LP) with control panel (WTS-1500)
- New Headhunter super bowl toilet heads & bidet (BDS-9)
- New Headhunter multistage fresh water pressure pumps (M5-230/60)
- New Headhunter accumulators (PT-102) for fresh water system
- New plumbing of black water system to heads.
- New plumbing of fresh water system to heads.
- All new domestic appliances.
- New Reupholster 183 pieces Headliner Ceilings Panels in all owner Areas throughout Boat:
- All new exterior upholster including:
- Flybridge Forward Port and Starboard Lounges; Aft Salon Deck Lounge Cushions including increasing height of back cushions by adding 6' of additional Dry-Fast Foam: Cockpit Coaming Bolsters.
- Two Forward Console Seat And Back Cushions
- New Seat and Back Cushions for Six High Back Dining Chairs for Aft Salon Deck Dining Table:



- New Padded and Lined Table Cover for Aft Salon Deck Teak Table
  - New Three Sun Cushions for Boat Deck for Aft Sun Lounge including 4' Dry-Fast Foam:
  - New Boat Deck Sun Lounge Weather Cover
  - New Weather Cover for Aft Salon Deck Lounge.
  - All new carpeting and Soundown padded underlay throughout.
  - New Wallpaper Installation throughout the guest accomodation.
  - New System complete for lighting and Sound (new speakers throughout)
  - New 60' Pioneer Elite Flat Screen in Salon
  - New 50' Panasonic Flat Screen in Master
  - New TV's Throughout
  - New IPod pads with Crestron in Salon and Master
  - New teak and holly look flooring in the galley, dinette, wheelhouse and passageway.
  - New Custom Fabricate teak table approximate 9'x30' for the aft deck
  - All interior wood work was refinished complete with SS stripping
  - New low voltage programmable lighting throughout guest areas
- 
- New fluorescent light fixtures in engine room and control room
  - New underwater lights with total rewiring underwater light control system.
  - New shore/generator switch panel cooling fan and switching
  - New Appliances
  - New window treatments throughout
  - All new granite/stone countertops throughout, including: Galley, all bathrooms, salon, staterooms.
  - New Miele Washer/Dryers (2 sets)
  - New Panasonic and Sony Ericsson phone system
  - New Flybridge 42" drop down WATERPROOF flat screen TV
  - New Kobelt Engine controls
  - New Port and Starboard all four cutlass bearings 4'x5 1/4"
  - New tides strong seal drip less system
  - New bow thruster control
  - Factory Rebuild Maxwell 4500 Windlasses and Bosun Locker Hydraulic System
  - New Fire pump
  - New Seafair Horizon watermaker

All pilothouse navionics upgraded or replaced, including:

- Four Vitec 20" monitors
- One 22" IMO approved Nauticomp Monitor
- New Flir Navigator Thermal Night Vision Camera
- New two ultra light Elbex cameras & upgrade for CCTV system.
- Complete GMDSS system
- New Ethernet Intersystem Communications
- Custom navigation computer with Nobletec navigation suite.

- Furuno RD30
- Furuno GP150
- Furuno FA 150 AIS
- Navtek
- Furuno 72m radar
- Furuno 48 m radar
- GMDSS communication system
- Flybridge Electronics has been improved, with Two Furuno Monitors, Furuno RD 30
- Furuno GP37, Sea 156 Vhf
- Furuno VHF'
- Wireless remote controlling computer and plotter
- Furuno weather
- Furuno Satellite Compass

---

## Galley/Laundry

---

The completely updated country-style galley is fully equipped and features large windows and a large U seating area for casual meals.

- Kitchen Aid convection oven
- Kitchen Aid 5-burner ceramic cook top
- Frigidaire convection microwave Stainless Steel Professional Series
- Frigidaire SS dishwasher
- Frigidaire SS trash compactor
- Custom range hood
- Built-in Cospolich Custom freezer/refrigerator (for'd galley bulkhead)
- LG refrigerator/freezer side by side (galley)
- Nu-Tone CV 353 WC central vacuum
- 2 sets Miele SS washer/dryer stack (one located in each guest area with laundry storage)
- DeLonghi SS coffee pot
- Kitchen Aid incinerator
- Tv with satellite decoder box.

---

## Mechanical

---

Engines 800 hrs SMOH 7,100 total hrs W6 done at 6,300 hrs

- 2 x ZF BW455 gear boxes
- 2 x 4" Aquamet 22 High Strength shafts
- Props: Lips 48" x 481/ 2 x 5 Blade Osborne 48" (Spares)
- Rudders: 2 x 5" Aquamet 22 stock with 9.3 sq ft stainless steel blades.
- Fuel capacity: 6,395 US Gallons (24,205 l) in 5 tanks
- Forward belly tank 1150 US Gallons (4350 l) - Mid belly tank 845 US Gallons (3200 l) - Day tank 1230 US Gallons (4655 l) - Port & Stbd tanks 1585 US Gallons (6000 l)
- Water: 1,000 US Gallons (3,785 l)
- Hot water: 2 x 40 Gallon feeding the hot water loop - 1 x 10 Gallon tank in line with loop - 1 x Circ pump
- New lube oil: 150 US Gallons (568 l)
- Used lube oil: 150 US Gallons (568 l)
- Steering oil: 10 US Gallons (37.8 l)
- Hydraulic oil: 10 US Gallons (37.8 l)
- Black tank: 350 US Gallons (1324.9 l)
- Headhunter USCG waste treatment system (2010)
- Steering system: Kobelt Hydraulic system driven from either main engine or back up electric pump
- 16" 50 hp hydraulically driven American Bow Thruster
- Engine room air conditioned control room.
- 2 new 5 ton air con chillers 2013.
- Naiad model # 353 stabilizers with Koopnautic control unit and 12 sq ft blades
- Fuel separator: Alfa Laval MMB 203S-13 fuel centrifuge fuel
- Fuel filters: Racor 79 1000 MAV on each main engine / Racor 900 MA on each generator
- Flomax five fuel transfer pump (Alfa Laval can also be used)
- 1 x Flomax bilge pump (Also used for anchor wash)
- Marine air Systems 216,000 btu air conditioner.
- Horizon Safari 1500 gal/day.
- Campbell Hausfeld 20-gallon VT629003AJ air compressor
- Brownies Yacht Pro series AM252 Bauer dive tank compressor
- Fresh water: 2 x Headhunter multistage fresh water pump (M5-230/60) with high flow strainer (IS-1000L) and 2 x Headhunter accumulator (PT-102)
- 2 x 55Kw Northern Lights Generators (new 2004) PORT 3,400 hrs and Generator STBD 3,400hrs.
- 6 x high level bilge alarms
- Both high and low bilge level alarms show on a panel in the wheelhouse. The high level alarm is audible throughout the vessel ER and wheelhouse

## Electronics & Navigation

Sat TV SeaTel Dish for Direct TV, SeaTel dish for GLA or extended Direct TV coverage. Total of

7 satellite decoder boxes, all accessed in central location.

Cameras on Aft deck, Engine room, two new Elbex side cameras monitored FB and wheelhouse. Cameras can be monitored on any TV. Wired, but not yet set up on TV's.

FLIR night vision camera monitored from pilothouse.

All new TV, Hi-Fi and Wi-Fi system throughout guest areas. Both DVD and VCR in main saloon can be viewed throughout the boat on in house channels in wheelhouse only. All SR TV's have own DVD's. CD/Tuners: Main Saloon 5-disc CD player - Guest cabins have been tied into System in Salon- Crew all have CD car stereos. Engine room, wheelhouse and flybridge have tied into System. Panasonic TRW 848 12 lines and intercom 2 desk units and 5 wireless units Sony Erickson W25 cell with wireless data PC computer in wheelhouse custom for navigation only

- Robertson AP9 MK3 automatic pilot
- Nobletec Admiral chart plotter
- Furuno Fax-207 weather fax - has Navtex board installed
- Rai: Kobelt - Robertson
- Aqua signal Nav lights
- (2) ACR RCL 100D 24vdc spot lights - Hand held plug in spot on bow
- Furuno Satellite Compass
- Ritchie fluxgate compass
- Robertson fluxgate compass
- Furuno FCV-292 wheelhouse (Aug 2005)
- Brookes and Gatehouse
- Furuno FCV-582 fly bridge
- Furuno 2117BB Arpa, 72 Mile
- Furuno 1944CBB 48 Mile
- Fleet 77 (Nera) Satcom
- Mini M (Nera) Satcom
- Westinghouse skycell Satcom
- MCM3 SeaTel Satcom
- Panasonic TRW 848 12 lines and intercom 2 desk units and 5 wireless units
- Sony Ericsson W25 cell with wireless data
- 2 x shore line receptacle
- Kalenberg M-511A Whistle Controller
- Twin trumpet Stromberg horns fed by compressed air

## Electrical

- 2 x Northern Light M1064T-55KW, new in **August 2004** - approx. 3,400hrs each
- 240/120 Volt single phase 60 hertz
- 2 x 240/208 100amp shore cords on Glendining
- 2 x 8d start batteries for port engine and port generator.( March 2010)
- 2 x 8d start batteries for starboard engine and starboard generators. (March 2010)
- Sentry 24v 40 Amp start battery

- 2 x 25 KVA Isolation transformers.
- Generator and main engine lead acid batteries.
- The house/inverter battery bank consists of twelve 2 volt lead acid batteries with a total amp per hour capacity of 1500
- 2 x trace 4024 inverter/charger for house bank charger
- 3 x SG27 gel cell emergency batteries. (2009)
- One bank of 2 volt cells for 24 volt house use (1500 Ah), new in 2009
- Charging by engine alternators and Sentry 24 volts 40 amp charger

## Deck & Hull

- ABS certified hull by Westport
- Awlgrip Matterhorn white paint. Total repaint Nov 2004. All decks repaint 2010.
- Swim platform and aft deck have new teak decking systems teak laid Nov 2004
- Custom propellers, 48'x 42.5'x 5 blades, Please be advised they were polished, dynamic-balanced and painted during the last refit work
- 2 x Maxwell 4500 hydraulically driven - (rebuilt 2008)-  
2 x Custom devils claw and double dog system
- 2 x Poole 3961b self stowing anchors fit up into stainless steel pockets
- Bottom paint 1- 2013.
- Pneumatic operated fold-out bridge wing control stations flybridge port and stb'd.
- 18' Novurania 2003 with VHF, Garmin,
- Dual battery, with outboard Yamaha 115 hp 4 Stroke.
- 2 x 350 ft of 5/8 Galv high test chain (G4 Link) ground tackle.
- 2 x Maxwell 3500 warping capstans on aft swim platform
- Nautical structures EZ2500-FB (Dec 2002) davit -2500 lb with 14' boom
- Self-stowing ladder under the swim platform swim ladder Air Controlled
- 1 x Marquip six-step sea ladders

## Safety

- 1x12 Elliot person life raft SOLAS

- 1 x EPIRB Cat 2 ACR RLB-28 located left of helm
- 2 x White Ring Life buoys with ACR Strobe lights, USCG 30'
- 18 x Adult life jackets (Over 32kg) fitted with strobes and whistles USCG/SOLAS
- 2 x Children life jackets (Under 32kg) Fitted with strobes and whistles USCG/SOLAS
- Flare kit
- 1 Large medical kit with portable oxygen-gas for medical use
- 2 x Fire Blankets
- 2 x Fixed Fire hoses
- 1 x Fireman's axe
- 14 x Fire extinguishers
- 1 x Foam nozzle for AFFF
- Operational Halon system in engine room
- 6 x DC powered bilge pumps with float switches
- 1 x Fire pump it was new in 2010 can be brought on line to all bilges
- Both main engine raw water pumps can be used to de-water
- Fire alarm bell system with 3 release points
- Smoke detectors in all areas connected to the alarm system
- Heat sensor in engine space connected to the alarm system

## Remarks

---

DON'T WORRY has had two Owners in her history and she was built specifically for the first owner, utilizing a proven Westport ABS certified hull.

She has had numerous upgrades throughout her life; from updated satellite equipment, new generators and main engine overhaul in 2004 to a comprehensive 2 year interior refit completed in 2010 by present owner. From her twin anchors, walk-around decks, oversized stabilizers, Headhunter waste treatment system, 1 button "all-off" Creston Lighting system, updated interior and low mechanical hours, this vessel is an outstanding value!

## Исключения

---

При продаже яхты исключаются личные вещи владельца.

## Отказ от ответственности

---

Компания предоставляет описание судна или яхты добросовестно, но не может

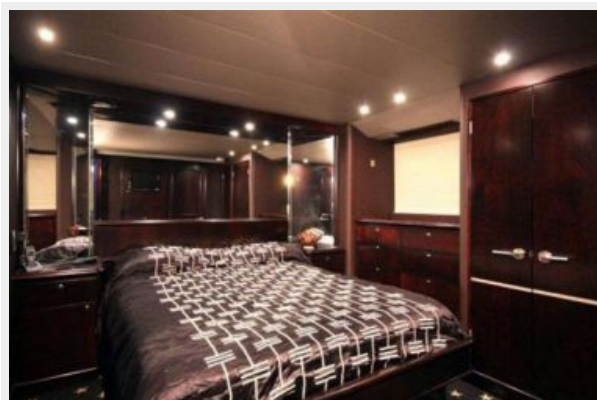
гарантировать точность этой информации, а также не ручается за техническое состояние. Покупатель должен проинструктировать своих агентов или оценщиков исследовать представленную информацию более подробно, по собственному желанию. Продажа судна или яхты, изменение цены или снятие с продажи будет происходить без предварительного уведомления.

# ФОТОГРАФИИ

**Master Stateroom**



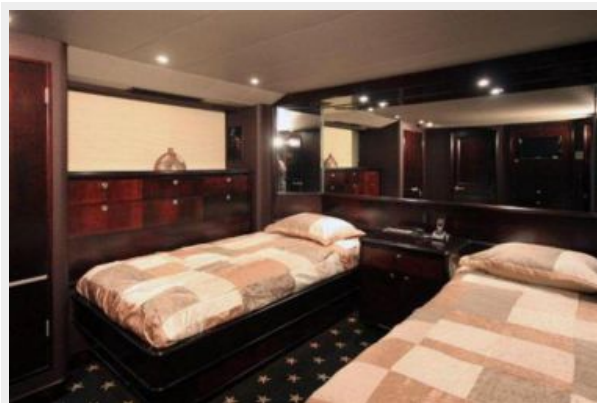
**Guest Stateroom**



**Forward Stateroom**



**Guest Stateroom**



**Flybridge**



**Forward Deck**





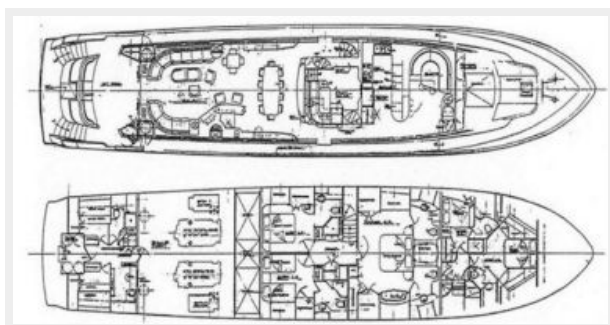
**Guest Head**



**Captain's cabin**



**original layout has been modified**



**Large foredeck with sunpad and dual anchors**



**24' beam and walkaround decks**

**Large extended integral swim platform for watersports**



**large covered aft deck**



**aft deck seating for 12**



**Large eat-in galley**



**All new galley 2009**



**Dinette with extra freezer storage for'd**



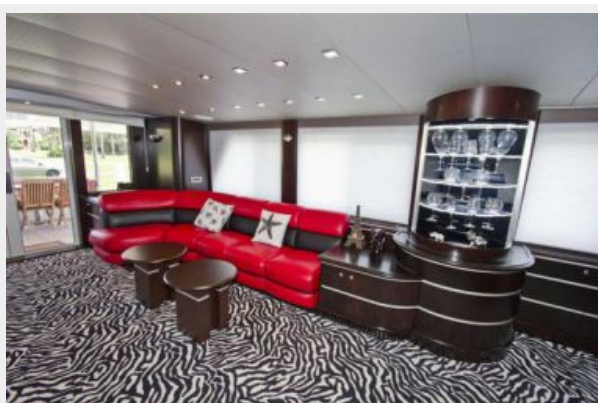
**salon looking for'd**



**salon theater**



**salon formal wet bar**



**carbon fibre helm with updated navionics**



**on deck powder room**



**salon looking aft**



**flybridge helm - 4 Stidd chairs**



**aft flybridge with sunbed and 2500# davit**



**Flybridge formal wet bar**



**master looking aft**



**large master walk-in shower**



**Stern shot**



**tender storage aft flybridge**



# КОНТАКТЫ

---

Андрей Шестаков (Andrey Shestakov) – ведущий яхтенный брокер отдела продаж яхт и судов компании Shestakov Yacht Sales Inc. Официальный представитель Shestakov Yacht Sales Inc. для русскоговорящих клиентов в центральном офисе компании в Майами/Форт Лодердейл/Флорида/США.

## Контактная информация

---

Email: [andrey@shestakovyachtsales.com](mailto:andrey@shestakovyachtsales.com)

Web: [shestakovyachtsales.com](http://shestakovyachtsales.com)

## Телефоны

---

Краснодарский край: **+7(918)465-66-44**

США, Майами, Флорида: **+1(954)274-4435**

## Время работы

---

Понедельник – Суббота: **9:00 - 21:00**  
EDT

Воскресенье: **Закрито**

## Адрес

---



Harbour Towne Marina, 850 NE 3rd St,  
STE 213, Dania, FL 33004