

FOUR PLAY — OCEAN YACHTS



Builder: [Ocean Yachts](#)

Year Built: 2007

Model: Sport Fisherman

Price: PRICE ON APPLICATION

Location: United States

LOA: 50' 0" (15.24m)

Beam: 16' 9" (5.11m)

Cruise Speed: 24 Kts. (28 MPH)

Our experienced yacht broker, Andrey Shestakov, will help you choose and buy a yacht that best suits your needs **Four Play — Ocean Yachts** from our catalogue. Presently, at **Shestakov Yacht Sales Inc.**, we have a wide variety of yachts available on our sale's list. We also work in close contact with all the big yacht manufacturers from all over the world.

If you would like to buy a yacht **Four Play — Ocean Yachts** or would like help answering any questions concerning purchasing, selling or chartering a yacht, please call **+1(954)274-4435**

TABLE OF CONTENTS

TABLE OF CONTENTS	2
SPECIFICATIONS	4
Basic Information	4
Dimensions	4
Speed, Capacities and Weight	4
Hull and Deck Information	4
Engine Information	4
DETAILED INFORMATION	5
Introduction	5
Accommodations	5
Main Salon	5
Galley & Dinette	6
Master Stateroom	6
VIP Guest Stateroom	6
Master & Guest Baths	6
Guest Cabin	7
Deck	7
Flybridge & Electronics	7
Fishing Cockpit	8
Electrical	8
Engine Details & Mechanical Equipment	8
Exclusions	9
Disclaimer	9
PHOTOS	10
CONTACTS	19
Contact details	19
Telephones	19
Office hours	19

Address

19

SPECIFICATIONS

Basic Information

Category: Sport Fisherman

Sub Category: Convertible

Model Year: 2007

Year Built: 2007

Country: United States

Cockpit: Yes

Dimensions

LOA: 50' 0" (15.24m)

Beam: 16' 9" (5.11m)

Speed, Capacities and Weight

Cruise Speed: 24 Kts. (28 MPH)

Displacement: 54038 Pounds

Water Capacity: 150 Gallons

Fuel Capacity: 780 Gallons

Hull and Deck Information

Hull Material: Fiberglass

Engine Information

Engines: 2

Manufacturer: Detroit Diesel

Model: 60 MTU 14.0L

Engine Type: Inboard

Fuel Type: Diesel

DETAILED INFORMATION

Introduction

FULLY EQUIPPED, EXCELLENT CONDITION, DESIGNER INTERIOR, LOW HOURS AND FRESH BOTTOM 04/2011. THIS IS THE WHOLE PACKAGE!!! FOUR PLAY is an AS NEW Plan A yacht which has enjoyed great ownership and an easy life. She's never been fished, is washed weekly and waxed three times a year. The gelcoat and her interior are factory fresh. When you combine the pedigree of an offshore tournament fisherman with the spacious and innovative interior floor plan that is Ocean trademarks, you get - The Perfect Cruising Convertible. Take advantage of her owners' retirement plans. Never fished, yet highly capable

Accommodations

Popular Plan A floor plan with Three Staterooms and Two Heads. Also, featuring a VIP Guest Stateroom with centerline double forward and an Upgraded Bruce Bales designer interior. Cabinetry and joinery is a beautiful satin teak and furnishings are elegant with ultra-leather and designer fabrics throughout. Moving forward through the main salon, the galley is to port with dining on the starboard side. Continuing forward and down five steps, the landing offers access to the staterooms and houses the Maytag washer and dryer in addition to the central vacuum system. The master stateroom is to port with private head and shower, the guest cabin is to starboard and the VIP guest accommodations are all the way forward. The second head offers dual access for both guest staterooms.

(4) Cruisair reverse cycle air conditioning units

Salon, bridge, master and guest, VIP

Main Salon

The carpeted main salon is accessed through an aluminum sliding door from the cockpit and is appointed with an L-shaped sofa (rod storage is below), occasional chair and cocktail table with storage.

- Retractable 30" LCD Flatscreen TV
- Bose Lifestyle CD/DVD Stereo with remote
- JBL AM/FM/CD Stereo
- U-Line icemaker

Galley & Dinette

Forward to port in the salon and opposite a booth-style dinette with high gloss teak table. Low profile galley with large under deck storage area.

- Sub Zero Under-counter Refrigerator drawer
- Sub Zero Under-counter Freezer drawer
- Force 10 3-burner stove top
- Sharp convection/microwave oven
- Broan trash compactor
- Disposal
- Corian countertops and sink
- Teak & holly flooring
- Spacious drawers and cabinets
- 20 Gallon Space Saver water heater
- Instant hot water faucet
- Pressure water system

Master Stateroom

Down and midships to port, the master stateroom offers a centerline full sized berth, built-in cabinets and two hanging lockers, nightstand with drawer storage, and a private head with shower. There is a 20" LCD flatscreen TV with DVD player and an AM/FM/CD Stereo.

VIP Guest Stateroom

All the way forward with a centerline queen bed, private access to the head and shower, two hanging lockers, cabinets, reading lamps, overhead lighting and a deck hatch.

Master & Guest Baths

- VacuFlush Heads

- Vanities w/Corian countertops & sinks
- Mirrored medicine cabinets
- Built-in shower seating
- Teak & Holly soles
- Holding tank w/macerator

Guest Cabin

Down and starboard off the landing with side-by-side twin berths, a hanging locker and built-in cabinetry and storage.

Deck

- Lewmar windlass w/remote
- S1600 Danforth anchor w/chain & rode
- Bow pulpit w/anchor roller
- Factory Hardtop w/Bomar hatch
- EZ2CY 4-side enclosure
- Full San Juan retractable cockpit sunshade
- Fresh & salt water washdowns
- Varnished Teak cap rails
- Teak covering boards
- Transom door w/gate
- Cockpit side lockers
- Fenders & lines
- Aluminum ladder, CP to FB
- FB safety hatch (clear Lucite) at ladder access
- Insulated drink box in salon entry step
- Dockside water connectors
- Boarding step box
- Fog Bell
- Air horns

Flybridge & Electronics

The AIR CONDITIONED FLYBRIDGE has a hardtop and fully instrumented helm station with excellent visibility, protected by an EZ2CY enclosure. There are two upgraded Murray ladder-back teak helm and companion chairs, lounge seating with pleated cushions for four guests forward, a newer refrigerator and insulated cooler.

- Raymarine E120 (72mi) Radar/GPS/Bottom Finder w/2 E120 Displays
- Simrad AP25 Autopilot
- Raymarine Tri-Data
- Icom VHF Radio
- 4" Danforth Compass
- Trac Vision KVH Satellite TV System, New 2009
- ACR Spotlight w/remote

Fishing Cockpit

- 6-Place rocket launcher
- Live baitwell in transom
- Cockpit rod holders
- (2) Insulated fish boxes w/macerator
- Bait prep center w/tackle drawers, sink & fresh water
- Cockpit Freezer

Electrical

- 24/110/220 Volt Systems
- 12.6 KW Westerbeke Generator in shield
- 470 Hours
- (8) Heavy duty batteries
- Newmar converter
- Sentry charger
- Glendenning Cablemaster
- 50amp Shore Cord
- Dyna plate grounding
- Breaker panel
- Spreader/Navigation/Engine Room Lights
- Cockpit courtesy lighting

Engine Details & Mechanical Equipment

Twin Detroit Diesel Series 60 MTU 14.0L Diesel Engines generate 825 HP and only 465 Hours. The sound and heat insulated (stand up) engine room is easily accessed from the cockpit.

- MTU Synchronizer

- MTU Emergency manual controls
- Twin Disc MG5114-A - 1.75:1 RG
- Bennett trim tabs
- Horizon RO 19gph Watermaker, New 2009 (fully automatic)
- Lubricating oil & recovery system
- Fuel transfer pump
- Blowers & pumps
- Fresh water spigot in ER
- Engine alarm system
- Automatic and manual fire suppression
- Hydraulic steering
- 30 x 36 4-Blade props
- 2.5" SS Shafts

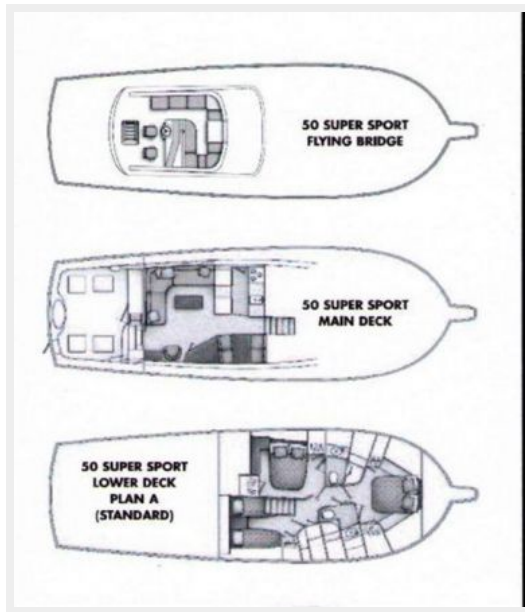
Exclusions

Owner's personal belongings.

Disclaimer

The Company offers the details of this vessel or yacht in good faith but cannot guarantee or warrant the accuracy of this information nor warrant the condition of the vessel. A buyer should instruct his representatives, agents, or his surveyors, to investigate such details as the buyer desires validated. This vessel or yacht is offered subject to prior sale, price change, or withdrawal without notice.

PHOTOS



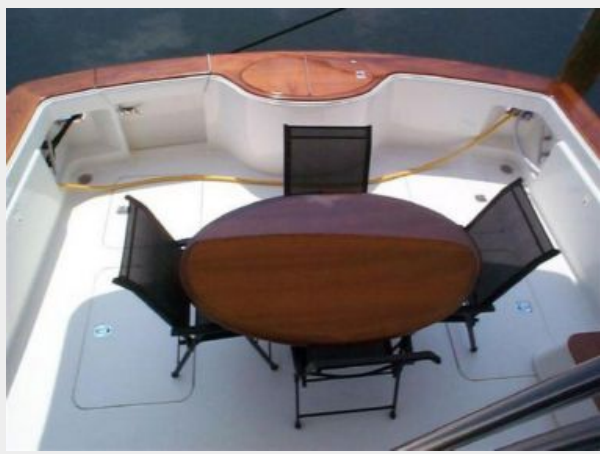


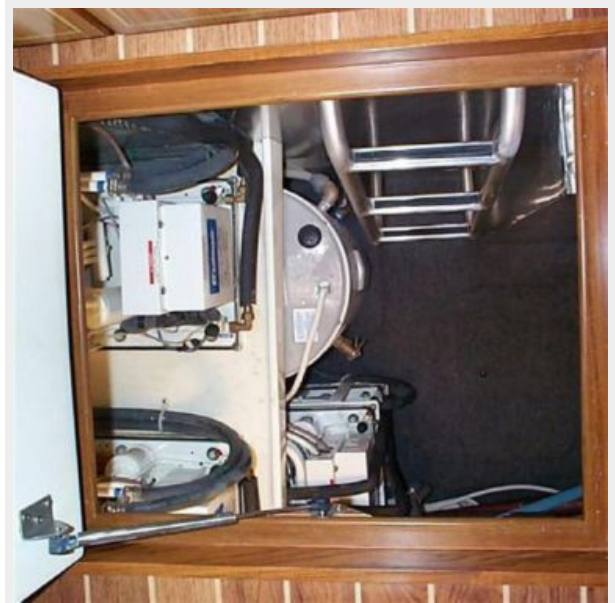














CONTACTS

Andrey Shestakov, leading yacht broker of the sales department of Shestakov Yacht Sales Inc. Shestakov Yacht Sales Inc., the official representative of the Miami/Fort Lauderdale FL headquarters.

Contact details

Email: andrey@shestakovyachtsales.com

Web: shestakovyachtsales.com/en/

Telephones

USA: +1(954)274-4435

Office hours

Monday – Saturday: **9:00 - 21:00** EDT

Sunday: **closed**

Address



Harbour Towne Marina, 850 NE 3rd St,
STE 213, Dania, FL 33004