

## BEST OF BOTH WORLDS — GULFSTAR



**Builder:** GULFSTAR

**Year Built:** 1982

**Model:** Motor Yacht

**Price:** PRICE ON APPLICATION

**Location:** United States

**LOA:** 48' 0" (14.63m)

**Beam:** 15' 3" (4.62m)

**Min Draft:** 3' 8" (1.09m)

Our experienced yacht broker, Andrey Shestakov, will help you choose and buy a yacht that best suits your needs **Best Of Both Worlds — GULFSTAR** from our catalogue. Presently, at Shestakov Yacht Sales Inc., we have a wide variety of yachts available on our sale's list. We also work in close contact with all the big yacht manufacturers from all over the world.

If you would like to buy a yacht **Best Of Both Worlds — GULFSTAR** or would like help answering any questions concerning purchasing, selling or chartering a yacht, please call **+1(954)274-4435**

# TABLE OF CONTENTS

---

TABLE OF CONTENTS	2
SPECIFICATIONS	4
Basic Information	4
Dimensions	4
Speed, Capacities and Weight	4
Accommodations	4
Hull and Deck Information	4
Engine Information	5
DETAILED INFORMATION	6
Features	6
Salon	7
Dinette Starboard	7
Galley Down Portside	7
Master Stateroom Aft	7
Guest Stateroom Forward	7
Guest Stateroom Portside Aft	8
Guest Head Starboard	8
Fly Bridge	8
Lower Helm	8
Foredeck	8
Aft deck	9
Deck	9
Electronics	9
Engine Room	9
Exclusions	10
Disclaimer	10
PHOTOS	11
Bow View	11

---

Port Side Deck	11
Aft View	11
Starboard Side Deck	12
Forward Deck	12
Forward Deck	12
Pulpit	12
Forward Deck	12
Flybridge Helm	13
Electronics	13
Dinghy	13
Head	14
Forward Helm	15
Companionway	16
Master Head	18
Master Head	18
CONTACTS	21
Contact details	21
Telephones	21
Office hours	21
Address	21

---

---

# SPECIFICATIONS

---

## Basic Information

---

**Category:** Motor Yacht

**Sub Category:** Flybridge

**Model Year:** 1983

**Year Built:** 1982

**Country:** United States

**Fly Bridge:** Yes

**Cockpit:** Yes

## Dimensions

---

**LOA:** 48' 0" (14.63m)

**Beam:** 15' 3" (4.62m)

**Min Draft:** 3' 8" (1.09m)

## Speed, Capacities and Weight

---

**Displacement:** 39000 Pounds

**Water Capacity:** 200 Gallons

**Fuel Capacity:** 700 Gallons

## Accommodations

---

**Total Cabins:** 3

**Total Berths:** 3

**Sleeps:** 8

**Total Heads:** 3

## Hull and Deck Information

---

**Hull Material:** Fiberglass

**Hull Configuration:** Modified V-Hull

**Hull Color:** White

---

## Engine Information

---

**Engines:** 2

**Manufacturer:** Detroit Diesel

**Model:** 671TI

**Engine Type:** Inboard

**Fuel Type:** Diesel

# DETAILED INFORMATION

## Features

	<b>**UPDATES 2008-2010**</b>
GE Washer/Dryer	NEW Dripless Shaft Logs
Wall Vacuum System	NEW Generator
Head Style Dehumidifier	NEW Icemaker
(2) Vee Berth Speakers	NEW Salon A/C
Set Positrol Engine Controls (Lower Helm)	Services Aft A/C Unit
Cruiseair A/C Units w/Heat Cycle	NEW Carpet
Water Heater	NEW Heads
Fresh Water Pump	NEW Stove
Shower Sump Pumps	NEW Lights
Tracvision Satellite TV Receiver	NEW Charger
Back-up Camera	NEW Bilge Pumps
Rudder Angle Indicator	NEW High Water Alarms
Zodiac Life Raft	NEW Batteries
Dinghy Davit	NEW Helm Chairs
1999 Dinghy w/25hp Yamaha outboard	NEW TV's
Set Spare Props	Rebuilt Windlass
50' 50 Amp Shore Power Cables	Set of Underwater Lights
50 Amp Pigtail	NEW 24" x 18" Safe
(4) Flat Screen TV's	NEW Isinglass
	NEW Microwave/Convection Oven
	NEW Aft Portlights w/Powder Coat & Safety Glass

## Salon

---

Panasonic Viera 42" flat screen TV Vizio DVD /  
SAT TV Recorder

Custom LED lights JVC-KW-Xr610 HD  
radio / LD stereo

## Dinette Starboard

---

Dinette converts to a double berth Pantry storage on starboard wall

## Galley Down Portside

---

Teak floor Double SS sink Corian countertop Princess 120V 2-  
burner flat surface stove GE Profile microwave/convection oven

Maytag Perform full size  
refrigerator Garbage  
disposal

Galley Speaker

Galley 120V Fan

## Master Stateroom Aft

---

Queen Island Berth Starboard large  
double closet Starboard drawers (3)  
drawers (7)

Samsung flat screen TV (32") A/C w/ SMX controls  
Port Vac-U-Flush head Separate shower Large Bowmar  
overhead hatch

## Guest Stateroom Forward

---

Over / under bunks Portside hanging locker Dynex flat

Ensuite Vac-U-Flush head & shower  
Large overhead Bowmar hatch

screen TV (15") Four starboard drawers w/ cabinet & overhead storage

Four steps down to aft guest & master staterooms Large starboard storage cabinets

---

## Guest Stateroom Portside Aft

---

Double berth w/ drawers below (2) Large Overhead storage compartments (2) Vizio flat screen closet TV (17")

---

## Guest Head Starboard

---

Vac-U-Flush Head Separate shower stall

---

## Fly Bridge

---

Full Instrumentation: Raytheon Raypilot 650 A/P  
Standard Horizon VHF Garmin 4210 GPS w/ stern camera Raymarine ST60 + Tri-Data, temp/depth/speed Kenwood KMR-700U HS radio w/ CD & I-Pod hookup & two Bose speakers Rudder angle indicator

Todd helm chairs (2)

Custom aluminum hardtop Zodiac 8 person canister life raft Davit 9' Rib dinghy w/ Yamaha 2 stroke outboard Radar arch Raymarine SAT TV Raymarine 24" Raydome Radar

---

## Lower Helm

---

Full Instrumentation: Micrologic ML-250 Mono GPS Raydata- Mariner 1500 SSB Raytheon Temp/ Depth/ Speed Raymarine RL70C - Color Radar / Plotter VHF Glendinning synchronizer

---

## Foredeck

---

Ideal Capstan windlass Fender Racks (4) CQR plow anchor (45#) Custom sun pad



## Aft deck

---

Wet bar w/ SS sink U-Line ice maker  
Samsung flat screen TV ( 32")

Port & Starboard wing doors NEW Isinglass  
enclosure Overhead teak rod holders (4)

## Deck

---

Port & Starboard shore power connection Port &  
Starboard water connection

Swim platform w/ Weaver davits  
Marquipt boarding ladder

## Electronics

---

Micrologic ML-250 GPS

Raytheon Ray Data

Raytheon RL70C GPS Map

Raytheon Ray 210 VHF

Kenwood AM/FM Receiver w/CD  
Changer

Hynautic/Hydraulic Assist Steering  
System

Glendinning Set Positrol Engine Controls (Lower  
Helm)

Set Trim Tabs

Set Trim Indicators

6" Danforth Compass

Remote Spotlight

## Engine Room

---

Twin Detroit Diesel 671TI NEW Charger

Engine Room Blowers NEW High Water Alarms

4 NEW Batteries NEW Dripless Shaft Logs

---

## NEW Bilge Pumps

---

### **Exclusions**

---

Owner's personal belongings.

---

### **Disclaimer**

---

The Company offers the details of this vessel or yacht in good faith but cannot guarantee or warrant the accuracy of this information nor warrant the condition of the vessel. A buyer should instruct his representatives, agents, or his surveyors, to investigate such details as the buyer desires validated. This vessel or yacht is offered subject to prior sale, price change, or withdrawal without notice.

# PHOTOS

**Bow View**



**Port Side Deck**



**Aft View**



**Starboard Side Deck**



**Forward Deck**



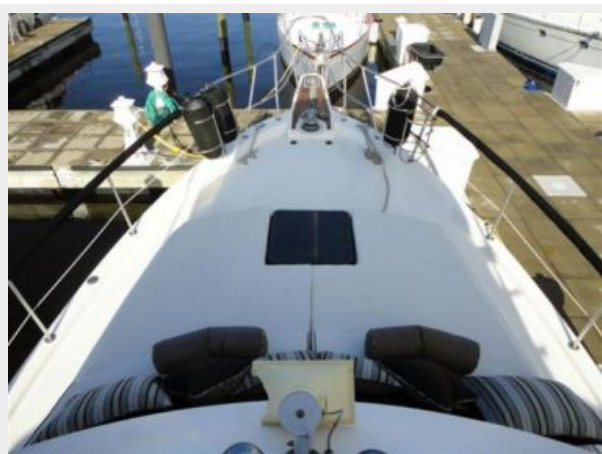
**Forward Deck**



**Pulpit**



**Forward Deck**



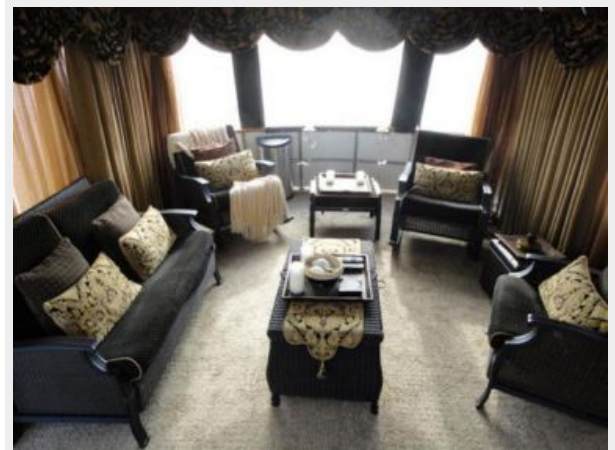
### Flybridge Helm

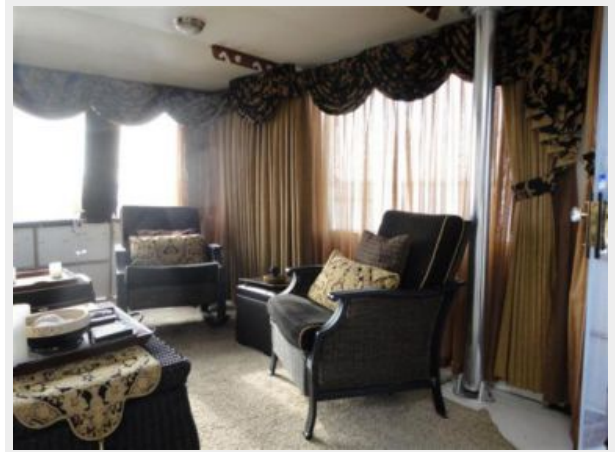
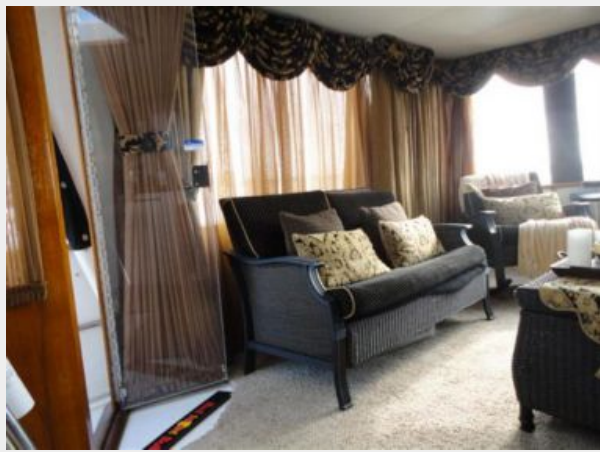


### Electronics



### Dinghy





### Head



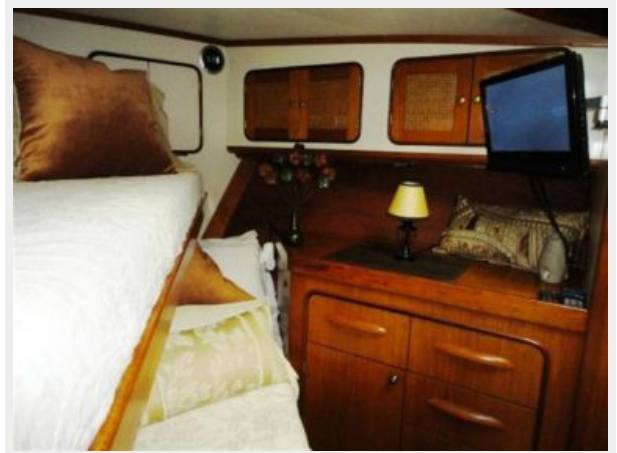


### Forward Helm





### Companionway









Master Head



Master Head







# CONTACTS

---

Andrey Shestakov, leading yacht broker of the sales department of Shestakov Yacht Sales Inc. Shestakov Yacht Sales Inc., the official representative of the Miami/Fort Lauderdale FL headquarters.

## Contact details

---

Email: [andrey@shestakovyachtsales.com](mailto:andrey@shestakovyachtsales.com)

Web: [shestakovyachtsales.com/en/](http://shestakovyachtsales.com/en/)

## Telephones

---

USA: +1(954)274-4435

## Office hours

---

Monday – Saturday: **9:00 - 21:00** EDT

Sunday: **closed**

## Address

---



Harbour Towne Marina, 850 NE 3rd St,  
STE 213, Dania, FL 33004