

63' 2010 VSC — VIKING SPORT CRUISERS



Судостроитель:
VIKING SPORT CRUISERS

Год постройки: 2010

Модель: Моторная яхта

Цена: **ЦЕНА ЯХТЫ ПО ЗАПРОСУ**

Местонахождение: United States

Длина общая: 63' 0" (19.20m)

Ширина: 16' 6" (5.03m)

Макс. осадка: 4' 9" (1.45m)

Купить 63' 2010 VSC — VIKING SPORT CRUISERS а также выбрать подходящую вам яхту из нашего каталога яхт вам поможет опытный яхтенный брокер Андрей Шестаков. На сегодняшний день компания Shestakov Yacht Sales Inc. имеет большое количество яхт в собственном списке продаж, а также тесно сотрудничает со всеми крупными яхтенными производителями по всему миру. Для того чтобы купить яхту 63' 2010 VSC — VIKING SPORT CRUISERS а также проконсультироваться по любому вопросу связанному с покупкой, продажей, чартером яхт позвоните по телефону **+7(918)465-66-44**.

ОГЛАВЛЕНИЕ

ОГЛАВЛЕНИЕ	2
ХАРАКТЕРИСТИКИ	5
Основная информация	5
Размеры	5
Скорость, вместимость и масса	5
Корпус и палуба	5
Информация о двигателе	5
ПОДРОБНОЕ ОПИСАНИЕ	6
Vessel Walkthrough	6
Salon	6
Galley	7
Master Stateroom	7
Master Head	7
VIP Stateroom, Forward	7
VIP Head, Forward	8
Guest Stateroom, Port	8
Guest Stateroom, Starboard	8
Guest Head	9
Flybridge	9
Lower Helm	10
Cockpit	10
Electrical System	10
Engine Room / Mechanical Equipment	11
Remarks	11
Исключения	11
Отказ от ответственности	12
ФОТОГРАФИИ	13
Salon	13

Salon	13
Salon	13
Salon	13
Galley	13
Galley	13
Master Stateroom	14
Master Stateroom	14
Master Stateroom	14
Master Stateroom	14
Master Stateroom	15
Master Head	15
Forward Stateroom	15
Forward Stateroom	15
Forward Head	16
Port Guest Stateroom	16
Starboard Guest Stateroom	16
Guest Head	16
Lower Helm	17
Lower Helm	17
Helm	17
Flybridge	17
Flybridge	17
Flybridge	17
Flybridge	18
Flybridge	18
Flybridge	18
Aft Deck	18
Aft Deck	18
Aft Deck	18

Aft Deck	19
Engine Room	19
Bow	19
Bow	19
Port Passageway	20
Swim Platform	20
Starboard Passageway	20
КОНТАКТЫ	21
Контактная информация	21
Телефоны	21
Время работы	21
Адрес	21

ХАРАКТЕРИСТИКИ

Основная информация

Тип судна: Моторная яхта

Модельный год: 2010

Год постройки: 2010

Страна: United States

Кубрик: Да

Размеры

Длина общая: 63' 0" (19.20m)

Ширина: 16' 6" (5.03m)

Макс. осадка: 4' 9" (1.45m)

Скорость, вместимость и масса

Водоизмещение: 66140 Pounds

Вместимость воды: 240 Gallons

Объем топливного бака: 900 Gallons

Корпус и палуба

Материал корпуса: Fiberglass

Комплектация корпуса: Semi-Displacement

Информация о двигателе

Двигатели: 2

Производитель: MAN

Модель: V-10

Тип двигателя: Inboard

ПОДРОБНОЕ ОПИСАНИЕ

Vessel Walkthrough

This stunning late model 63 is like new! She sleeps (8) in (4) staterooms, two of them with ensuite heads, and one more head for a total of three. The salon has a U-shaped leather sofa, high gloss teak coffee table with glass insert, entertainment center with hydraulic pop-up TV, surround sound and storage. The galley area is forward to the starboard side with full-size refrigerator, freezer, beige corian countertops, flat top stove, and plenty of cabinet and drawer storage. Port side of the galley is the dinette with leather U-shaped seating, high gloss teak table and storage for dinnerware. Down a couple of steps to aft is a luxurious master stateroom with king bed, entertainment package, full-size cedar-lined hanging locker, makeup vanity, port holes for natural sunlight, cabinet and drawer storage and ensuite head. The companionway just forward of master stateroom is where the washer/dryer are located.

Forward to port is one of the guest staterooms with upper and lower berths, hanging locker and port hole for natural sunlight. Starboard is another guest stateroom with side-by-side berths, hanging locker, entertainment package with TV, access to the shared head and drawer storage. All the way forward you have the VIP stateroom offering queen berth walk around, cedar-lined hanging locker, drawer and cabinet storage, electric hatch in ceiling that allows natural sunlight, entertainment package with TV, and an ensuite head.

This 63 has beautiful high gloss teak throughout, corian countertops in galley and heads. The interior decor is simply stunning!

Salon

- 110V Receptacles
- 32" LCD TV with DVD
- Bose Theater system
- High gloss cherry wood
- Indirect lighting
- KVH Sat TV
- Stereo/CD
- Stainless sliding door to cockpit
- Storage throughout
- Telephone outlet
- U-shaped leather settee with coffee table and L-shaped settee opposite
- Upgraded decor package
- Wine glass cabinet

Galley

- 110V GFI Receptacles
- Beige Corian counter tops
- Convection microwave
- Dishwasher
- Exhaust fan
- Four-burner flat top stove
- Full-size refrigerator/freezer
- Icemaker
- Sink/faucet
- Teak sole
- Upper and lower storage

Master Stateroom

- 110V Receptacles, GFI Protected
- 26" LCD TV
- AM/FM Stereo CD/DVD
- Full size cedar-lined hanging lockers
- King size bed
- Overhead lighting
- Portlights for natural sunlight
- Storage drawers below bed
- Vanity mirror

Master Head

- 110V Receptacles, GFI protected
- Exhaust fan
- Overhead lighting
- Stall shower
- Sink/faucet
- Teak sole
- Vanity with storage
- Vacuflush head

VIP Stateroom, Forward

- 19" LCD TV
- 110V Recetacles, GFI Protected

- AM/FM Stereo CD/DVD
- Cedar-lined hanging lockers
- Deck hatch with screen and blind
- Ensuite head
- Large double bed with drawers below
- Opening portlights
- Overhead lockers, outboard
- Overhead lights
- Reading lights
- Storage lockers
- Vanity with mirror and storage

VIP Head, Forward

- Avonite countertop
- Duplex 110V GFI receptacles
- Opening portlight
- Overhead lighting
- Sink
- Stall shower with seat
- Storage lockers
- Teak sole
- Vacuflush toilet

Guest Stateroom, Port

- (2) Full-size single upper/lower berths with storage
- Hanging locker with shelf
- Opening portlights
- Overhead lights
- Reading lights
- Storage lockers
- 110V Receptacles, GFI Protected

Guest Stateroom, Starboard

- 19" LCD TV
- (2) Full size single side-by-side berths with storage
- AM/FM Stereo CD/DVD
- Ensuite head
- Hanging locker with shelf

- Night stand with storage
- Opening portlights
- Overhead lights
- Reading lights
- Storage lockers
- 110V Receptacles, GFI protected

Guest Head

- Across from companionway and starboard stateroom
- Avonite countertop
- Duplex 110V GFI receptacles
- Exhaust fan
- Opening portlight
- Overhead lighting
- Shower
- Storage lockers
- Teak sole
- Vacuflush toilet

Flybridge

The flybridge has been designed for both entertaining and ease of navigation. The helm is centerline with seating on both sides. Aft of the helm seating is the wet bar with sink, storage, and BBQ grill. Continuing aft there is a U-shaped seating with table as well as two sun pads for relaxation and tanning.

- Autopilot
- Anchor windlass remote
- Bow thruster
- Furuno NavNet GPS/Plotter/Radar Display
- Custom Bimini top
- Depth finder
- Ritchie compass
- Search light
- Stern thruster
- Stereo & speakers
- Trim tab controls
- Teak flooring
- VHF

Lower Helm

- Autopilot
- Bow thruster
- Electronic engine controls
- Full instrumentation
- Furuno NavNet GPA/Chartplotter/Radar
- Furuno RD-30 Depth
- Stern thruster
- Remote for search light
- VHF
- Windlass remote

Cockpit

- Bench seating
- Dockage assist electric windlass
- Emergency shut off locker - fuel, bilge pumps, halon
- Engine room access
- Fresh water washdown
- Hot/Cold shower
- High gloss custom teak table
- Lazarette access
- Stairs to helm
- Storage
- TV
- Tri-colored lighting
- Teak
- Transom door

Electrical System

- 50 amp / 240V Dockside services
- 110V Receptacles, CFI protected
- Anchor windlass
- Batteries
- (2) Battery chargers, 105 amps total
- Bonding system
- Central vacuum system
- Circuit breakers on all circuits
- Engine room lighting
- Generator 21.5kW, soundshield

- Generator gauge package
- Horns, twin electric
- Navigation/running lights
- Neutral safety switch for engine controls
- Polarity check system
- Remote battery master switches
- Searchlight, twin beam
- Shore cable inlets, TV and phone

Engine Room / Mechanical Equipment

- A/C Zoned with reverse cycle heat (69,000 BTU)
- Bilge pumps, electric with float and manual switch
- Bilge pump, emergency manual
- Bowthruster with dual station controls
- Contaminated fuel warning system
- Dripless shaft logs
- Engine room blowers
- Exhaust silencers for engines and generator
- Exhaust water-flow failure light and alarm at flybridge and main helm
- Fire protection system, automatic and manual
- High-speed rudders
- High volume air intakes with moisture eliminators
- Holding tank, 67 gallons, with dockside, overboard pump out, and gauge
- Power assisted hydraulic steering system
- Propellers, 5-bladed nickel aluminum bronze
- Propeller shafts
- Remote fuel shut-offs
- Water heater
- Water tank with gauge

Remarks

The sleek and stylish Viking Sport Cruiser 63 is the ultimate cruising machine for family and friends. She offers a very comfortable 4 stateroom, 3 head layout with a full beam master. This 63 is well cared for with low hours and is priced to sell.

Исключения

При продаже яхты исключаются личные вещи владельца.

Отказ от ответственности

Компания предоставляет описание судна или яхты добросовестно, но не может гарантировать точность этой информации, а также не ручается за техническое состояние. Покупатель должен проинструктировать своих агентов или оценщиков исследовать представленную информацию более подробно, по собственному желанию. Продажа судна или яхты, изменение цены или снятие с продажи будет происходить без предварительного уведомления.

ФОТОГРАФИИ

Salon



Salon



Salon



Salon



Galley



Galley



Master Stateroom

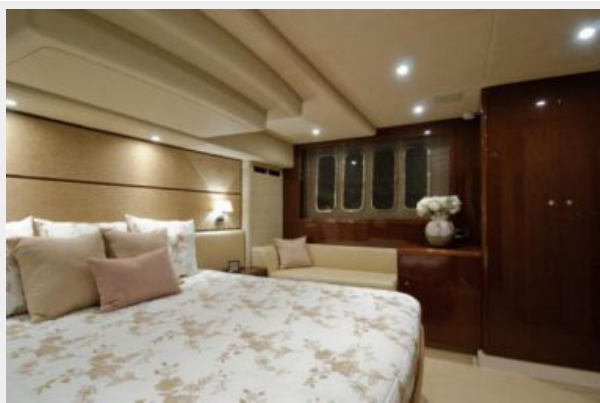


Master Stateroom



Master Stateroom

Master Stateroom



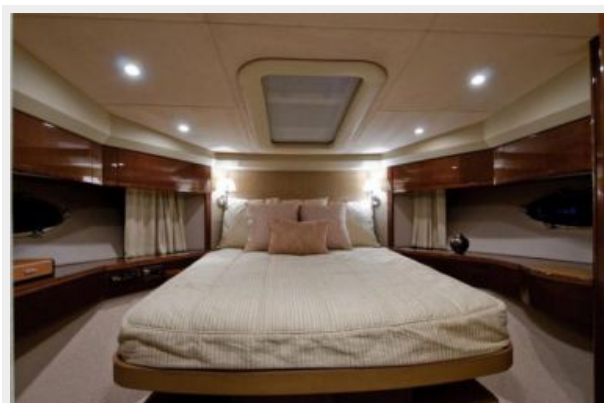
Master Stateroom



Master Head



Forward Stateroom



Forward Stateroom



Forward Head



Port Guest Stateroom



Starboard Guest Stateroom



Guest Head



Lower Helm



Lower Helm



Helm



Flybridge



Flybridge



Flybridge



Flybridge



Flybridge



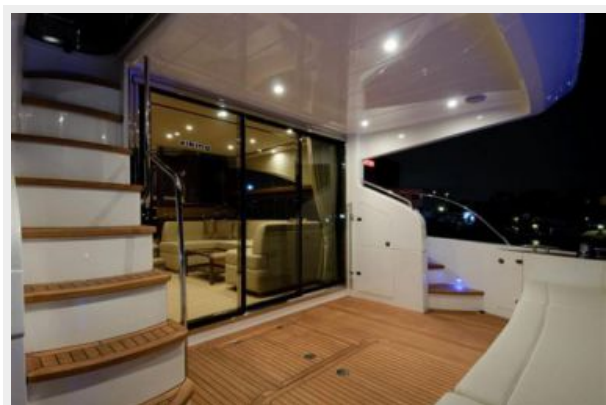
Flybridge



Aft Deck



Aft Deck



Aft Deck



Aft Deck



Engine Room



Bow



Bow



Swim Platform



Port Passageway



Starboard Passageway



КОНТАКТЫ

Андрей Шестаков (Andrey Shestakov) – ведущий яхтенный брокер отдела продаж яхт и судов компании Shestakov Yacht Sales Inc. Официальный представитель Shestakov Yacht Sales Inc. для русскоговорящих клиентов в центральном офисе компании в Майами/Форт Лодердейл/Флорида/США.

Контактная информация

Email: andrey@shestakovyachtsales.com

Web: shestakovyachtsales.com

Телефоны

Краснодарский край: **+7(918)465-66-44**

США, Майами, Флорида: **+1(954)274-4435**

Время работы

Понедельник – Суббота: **9:00 - 21:00**
EDT

Воскресенье: **Закрито**

Адрес



Harbour Towne Marina, 850 NE 3rd St,
STE 213, Dania, FL 33004