

TLC — VIKING



Судостроитель: [VIKING](#)

Год постройки: 2008

Модель: Катер для спортивной рыбалки

Цена: ЦЕНА ЯХТЫ ПО ЗАПРОСУ

Местонахождение: United States

Длина общая: 45' 0" (13.72m)

Ширина: 16' 4" (4.98m)

Макс. осадка: 4' 6" (1.37m)

Крейс. скорость: 29 Kts. (33 MPH)

Купить **TLC — VIKING** а также выбрать подходящую вам яхту из нашего каталога яхт вам поможет опытный яхтенный брокер Андрей Шестаков. На сегодняшний день компания **Shestakov Yacht Sales Inc.** имеет большое количество яхт в собственном списке продаж, а также тесно сотрудничает со всеми крупными яхтенными производителями по всему миру.

Для того чтобы купить яхту **TLC — VIKING** а также проконсультироваться по любому вопросу связанному с покупкой, продажей, чартером яхт позвоните по телефону **+7(918)465-66-44**.

ОГЛАВЛЕНИЕ

ОГЛАВЛЕНИЕ	2
ХАРАКТЕРИСТИКИ	4
Основная информация	4
Размеры	4
Скорость, вместимость и масса	4
Корпус и палуба	4
Информация о двигателе	4
ПОДРОБНОЕ ОПИСАНИЕ	5
Introduction	5
VESSEL WALKTHROUGH	5
Main Salon	5
Galley	6
Master Stateroom	6
Master Head	6
Guest Stateroom	7
Guest Head	7
Deck	7
Electronics & Helm	8
Electrical	9
Engine Details & Mechanical Equipment	9
Исключения	10
Отказ от ответственности	10
ФОТОГРАФИИ	11
КОНТАКТЫ	16
Контактная информация	16
Телефоны	16
Время работы	16
Адрес	16

ХАРАКТЕРИСТИКИ

Основная информация

Тип судна: Катер для спортивной рыбалки

Подкатегория: Convertible

Модельный год: 2008

Год постройки: 2008

Страна: United States

Кубрик: Да

Размеры

Длина общая: 45' 0" (13.72m)

Ширина: 16' 4" (4.98m)

Макс. осадка: 4' 6" (1.37m)

Скорость, вместимость и масса

Крейс. скорость: 29 Kts. (33 MPH)

Водоизмещение: 49750 Pounds

Вместимость воды: 150 Gallons

Объем топливного бака: 848 Gallons

Корпус и палуба

Материал корпуса: Fiberglass

Информация о двигателе

Двигатели: 2

Производитель: MAN

Модель: V8 900 CRM

Тип двигателя: Inboard

Тип топлива: Diesel

ПОДРОБНОЕ ОПИСАНИЕ

Introduction

BLUE SKY is spectacular! Powered by MAN V8 900CRM with very low hours, 400 hour service completed in 2010. Layout consists of two staterooms and two heads with master head forward. Galley is to starboard with an island and two stools. L shaped sofa and dinette are to port. Awesome display of electronics which include (3) 10" Furuno NavNet VX 2 CMAP NT MAX units, Furuno Autopilot and much more. BLUE SKY is rigged to tournament fish and travel.

VESSEL WALKTHROUGH

Step aboard BLUE SKY and one will find a beautiful teak cockpit deck and covering boards installed spring of 2011. Complementing the cockpit is the Pompanette fighting chair and tackle center. Enter the salon from the starboard side of the vessel and to port is a large L-shaped couch with excellent storage below. Forward and to port is the dinette with storage below seating and a teak finished hi-gloss table with cover. Across to stbd is the galley. Corian counters, subzero refrigeration and freezers, and an island countertop with storage and two fixed bar stools. Vessels electric panel is to stbd upon entering the salon.

Down the companionway and to port is the washer and dryer. Forward of the washer and dryer and to port is the guest head. Guest head has access from the companionway and from the guest stateroom which is forward and to port. Across to stbd is the master stateroom with a queen berth and private head in the bow. A very unique and spacious layout. A gorgeous décor and design.

Main Salon

- L-shaped couch with storage below. Couch covers
- Teak Salon Cocktail table
- Dinette with storage below seating and covers
- Teak hi-gloss dinette table with cover
- Wrapped Hatch Carpeting, canvas carpet runners through companionway and partial of salon
- Headliner with recessed lighting
- Blinds and Teak Valances
- Ships Electric Panel
- 32" Flat Screen TV over Dinette
- Stereo/CD/DVD

- Storage cabinets and drawers
- Boat Show Accessory Kit
- Premier Edition Decor
- Custom Amtico Flooring at Entranceway – American Ash
- Clear coat salon windows
- Vertical Teak Strips between wall panels in companionway

Galley

- Corian Counter Tops
- Sink
- Microwave / Convection Oven
- Recessed Cooktop
- Island Counter with matching corian countertop
- Two fixed bar stools
- Subzero Refrigeration and Freezer drawers under counter
- Wood Flooring
- Storage cabinets and drawers
- Galley lights and outlets

Master Stateroom

- Queen Berth with Upgraded Mattress
- 15" Flatscreen TV
- Storage below berth
- Large Cedar Lined Hanging Locker
- Storage Drawers
- Custom wallpaper
- Ample Storage below berth
- Custom Bed Spread and Pillows
- Carpeting
- Headliner with recessed lighting on dimmer

Master Head

- Vacuflush Toilet
- Corian Vanity Countertop Oyster
- White Sink
- Medicine Cabinet

- Storage Below sink
- Amtico American Ash Flooring
- Stall Shower
- Lights and Outlets
- Blower Vent
- Towel Bar
- Custom Wallpaper

Guest Stateroom

- Over under bunks with upgraded mattresses
- Storage below lower bunk
- Cedar lined hanging locker
- Headliner with recessed lights
- Access to guest head
- Carpeting

Guest Head

- Stall Shower
- Amtico Flooring American Ash
- Corian Vanity Countertop Oyster
- White sink
- Vacuflush toilet
- Lights and Outlets
- Blower and Vent
- Medicine Cabinet

Deck

- Teak Cockpit Deck and Covering Boards
- In Deck Fishboxes with Pumpout
- In deck Livewell
- Tackle Storage to Stbd
- Tackle Storage drawers
- Cockpit Freezer
- Bait Prep Station
- Engine Room Access
- Pompanette Fighting Chair w/Cushions, Cover, white seat and rocket launcher with backrest
- Clear Coat on all Aluminum

- Cockpit Cover (No Sides)
- Helm Cover
- Rupp Outriggers and Center Rigger
- Fresh Water and Salt Water Washdown
- Rod Holders
- Gaff Storage
- Bow Rail with Pulpit
- Hardtop with Track to Track 3 Side EZ2CY Enclosure (Port & Stbd Aft Curtains Stratoglass)
Zippered Vents on Top of Front 3 Curtains
- Powder Coated Grabrails Under Side of hardtop
- Fresh Water Washdown at bow inside anchor locker
- Molded in 300 Watt Quartz Lights on Dimmer
- Recessed Lighting Underside Hardtop
- Rocket Launcher on Bridge Rail
- Transom Swim Step
- Refrigerated Cockpit Salon Step Drink Box
- Gas Springs on all Hatches
- Salon Door Damper “First Mate”
- Self Bailing Cockpit
- Non Skid Decks

Electronics & Helm

- Recessed Electric Teaser Reels US 8
- Two Teak Ladder-back Helm Chairs
- Fresh Water Supply on Bridge
- Fiberglass Helm Pod
- Single Lever Controls
- Power Assist Steering
- Recessed Electronics Boxes
- Trim Tabs
- Fuel Gauge
- Under Helm Access and Storage
- Fire Suppression System
- Moritz Safety Monitor
- Spotlight
- MAN Digital Engine Displays
- (3) 10” Furuno NavNet VX2 CMAP NT MAX
- Chartplotter, Radar, Color Sounder all interfaced, Weather and Surface Temp Overlay
- Furuno RD30 Digital Sea Temp and Speed
- Icom IC-M604 VHF
- Furuno Autopilot
- Forward Bench Seat with Cushions and Storage

- STBD Bench Seat with Cushions and Storage
- Jump Seat With Backrest Insulated Soda Box Under Seat

Electrical

- Onan 17KW generator with underwater exhaust
- 110V and 240V AC power system
- 50A 220V Shore power cord with Glendenning Cablemaster
- Battery charger
- Voltage stabilizer transformer
- 24 volt ship service throughout
- 24 volt/ 12 volt power supply with breaker
- (2) independent 24 volt banks of batteries
- Battery distribution panel
- Battery parallel system
- Bonded electrical system
- Color coded wiring throughout
- AC and DC engine room lights
- Master electrical panel located in salon
- Sub panel in galley for appliances
- Batteries
- Oil Change System
- Hot Water Heater
- Cruise Air AC/Heat
- Pressure water System
- Cabin Lights and Outlets
- NAV Lights
- Cockpit Indirect Lighting
- Salon Indirect Lighting
- Washdown Pumps

Engine Details & Mechanical Equipment

- Awlgripped Engine Room
- Awlgrip Brass Thru Hulls and Sea Strainers in Engine Room and Forward Bilges
- Fuel Filters Snow White
- 110V outlet on Aft Bulkhead at Entranceway
- All Pumps Painted Snow White
- Oval Exhaust Outlets
- Fiberglass Side Thru-hulls
- Magnetic Switches for all bilge lights
- Push button catches for electronics boxes

- Bridge installed without exposed fasteners
- Crash Pumps
- Fuel Priming Pumps 24V
- Awlgripped Forward Bilge And Anchor Locker

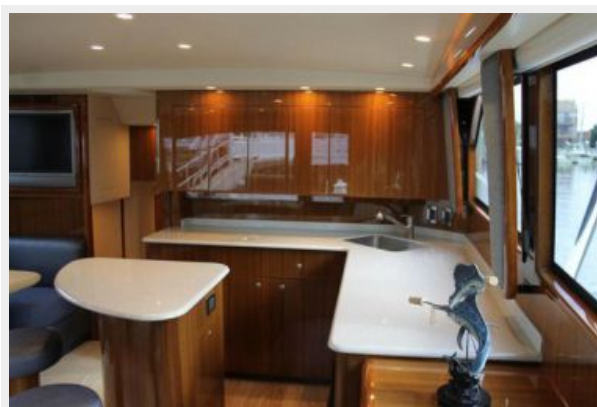
Исключения

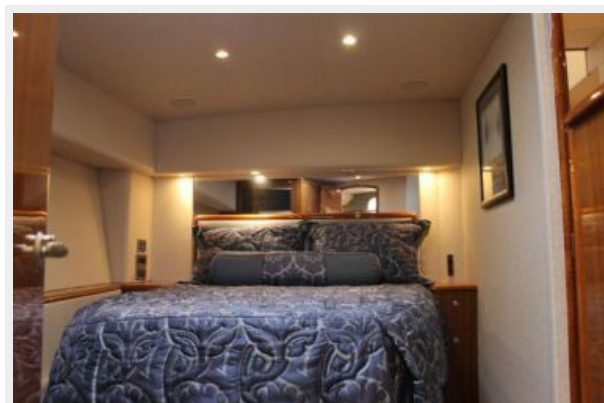
При продаже яхты исключаются личные вещи владельца.

Отказ от ответственности

Компания предоставляет описание судна или яхты добросовестно, но не может гарантировать точность этой информации, а также не ручается за техническое состояние. Покупатель должен проинструктировать своих агентов или оценщиков исследовать представленную информацию более подробно, по собственному желанию. Продажа судна или яхты, изменение цены или снятие с продажи будет происходить без предварительного уведомления.

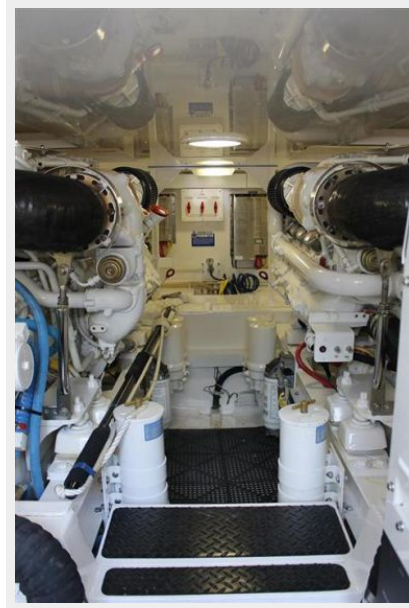
ФОТОГРАФИИ











КОНТАКТЫ

Андрей Шестаков (Andrey Shestakov) – ведущий яхтенный брокер отдела продаж яхт и судов компании Shestakov Yacht Sales Inc. Официальный представитель Shestakov Yacht Sales Inc. для русскоговорящих клиентов в центральном офисе компании в Майами/Форт Лодердейл/Флорида/США.

Контактная информация

Email: andrey@shestakovyachtsales.com

Web: shestakovyachtsales.com

Телефоны

Краснодарский край: **+7(918)465-66-44**

США, Майами, Флорида: **+1(954)274-4435**

Время работы

Понедельник – Суббота: **9:00 - 21:00**
EDT

Воскресенье: **Закрито**

Адрес



Harbour Towne Marina, 850 NE 3rd St,
STE 213, Dania, FL 33004