

## CARINAT — VIKING SPORT CRUISERS



**Builder:** VIKING SPORT CRUISERS

**Year Built:** 2008

**Model:** Cruiser

**Price:** PRICE ON APPLICATION

**Location:** United States

**LOA:** 54' 0" (16.46m)

**Beam:** 15' 0" (4.57m)

**Max Draft:** 4' 2" (1.27m)

**Cruise Speed:** 28 Kts. (32 MPH)

**Max Speed:** 33 Kts. (38 MPH)

Our experienced yacht broker, Andrey Shestakov, will help you choose and buy a yacht that best suits your needs **CARINAT — VIKING SPORT CRUISERS** from our catalogue. Presently, at Shestakov Yacht Sales Inc., we have a wide variety of yachts available on our sale's list. We also work in close contact with all the big yacht manufacturers from all over the world.

If you would like to buy a yacht **CARINAT — VIKING SPORT CRUISERS** or would like help answering any questions concerning purchasing, selling or chartering a yacht, please call **+1(954)274-4435**

# TABLE OF CONTENTS

TABLE OF CONTENTS	2
SPECIFICATIONS	4
Overview	4
Basic Information	4
Dimensions	4
Speed, Capacities and Weight	5
Accommodations	5
Hull and Deck Information	5
Engine Information	5
DETAILED INFORMATION	6
Overview	6
Salon	6
Galley	6
Master Stateroom	6
VIP Stateroom	7
Guest Stateroom	7
Flybridge	7
Electronics & Navigational Equipment	7
Aft Deck	7
Electronics	7
Inside Equipment	8
Electrical Equipment	8
Additional Features	8
Remarks	9
Exclusions	9
Exclusions	9
Disclaimer	9
PHOTOS	10

---

CONTACTS	18
Contact details	18
Telephones	18
Office hours	18
Address	18

---

# SPECIFICATIONS

---

## Overview

---

VSC/Princess hit a home run with the 54 Flybridge model. She's a great 30 knot sea boat incorporating a full beam master stateroom with ensuite head, VIP queen berth forward, twin single berth cabin to starboard, and an additional dual access head with stall shower. The galley down arrangement includes a stand up LG refrig./freezer, Splendide washer/dryer, 4 burner flat top stove, Sharp Carousel microwave, exhaust fan, Avonite counter tops, ample storage, large S/S sink, and oak flooring. The exceptionally large main salon contains a dedicated U-shaped dinette to port, dual helm seats to starboard, U-shaped white leather couch with a full size fold out teak coffee table, and an electric pop up Sony Bravia HDTV located in the Serotina Cherry cabinet to port which also contains a wine chiller, ice maker, and large storage drawer. The salon is very open, and airy owing to the two tiered side window design, (with electric port, and starboard raise/lower windows), and the dual aft sliding cockpit doors. The teak cockpit, with overhead flybridge protection, offers a large seating area, separate engine room hatch, and an additional dual access storage/electrical room. The flybridge is "best in class", and is accessed from a teak stairway which leads to the portside dual helm seating, electric grill, wet bar, starboard side Modiva U-shaped settee with fixed table, dedicated drink refrigerator, and the large double sun pad aft with storage under. The wide side decks, and high side rails lead forward to the foredeck sun pad. The Volvo 775hp D-12's have a transferable 3 year extended warranty through 2015.

## Basic Information

---

**Category:** Cruiser

**Model Year:** 2008

**Year Built:** 2008

**Country:** United States

**Cockpit:** Yes

## Dimensions

---

**LOA:** 54' 0" (16.46m)

**Beam:** 15' 0" (4.57m)

**Max Draft:** 4' 2" (1.27m)

---

## Speed, Capacities and Weight

---

**Cruise Speed:** 28 Kts. (32 MPH)

**Max Speed:** 33 Kts. (38 MPH)

**Displacement:** 51800 Pounds

**Water Capacity:** 130 Gallons

**Holding Tank:** 50 Gallons

**Fuel Capacity:** 550 Gallons

---

## Accommodations

---

**Total Cabins:** 3

**Total Heads:** 2

---

## Hull and Deck Information

---

**Hull Material:** Fiberglass

---

## Engine Information

---

**Engines:** 2

**Manufacturer:** Volvo

**Model:** D-12

**Engine Type:** Inboard

**Fuel Type:** Diesel

---

# DETAILED INFORMATION

---

## Overview

---

VSC/Princess hit a home run with the 54 Flybridge model. She's a great 30 knot sea boat incorporating a full beam master stateroom with ensuite head, VIP queen berth forward, twin single berth cabin to starboard, and an additional dual access head with stall shower. The galley down arrangement includes a stand up LG refrig./freezer, Splendide washer/dryer, 4 burner flat top stove, Sharp Carousel microwave, exhaust fan, Avonite counter tops, ample storage, large S/S sink, and oak flooring. The exceptionally large main salon contains a dedicated U-shaped dinette to port, dual helm seats to starboard, U-shaped white leather couch with a full size fold out teak coffee table, and an electric pop up Sony Bravia HDTV located in the Serotina Cherry cabinet to port which also contains a wine chiller, ice maker, and large storage drawer. The salon is very open, and airy owing to the two tiered side window design, (with electric port, and starboard raise/lower windows), and the dual aft sliding cockpit doors. The teak cockpit, with overhead flybridge protection, offers a large seating area, separate engine room hatch, and an additional dual access storage/electrical room. The flybridge is "best in class", and is accessed from a teak stairway which leads to the portside dual helm seating, electric grill, wet bar, starboard side Modiva U-shaped settee with fixed table, dedicated drink refrigerator, and the large double sun pad aft with storage under. The wide side decks, and high side rails lead forward to the foredeck sun pad.

## Salon

---

The Main Salon is huge, open, and airy with a dedicated port side dining table, dual helm seats in custom white leather, U-shaped starboard settee in custom white leather, large fold-out teak coffee table, Pop-Up Sony Bravia LCD TV, Avanti wine chiller, Raritan ice maker, Bose home theater, dual level window treatments, port, and starboard raise/lower windows, full carpet covers, dual sliding doors to the teak cockpit.

## Galley

---

The Galley, which is down to port, is open, and airy containing an LG stand up refrig./freezer, Splendide washer/dryer, four burner flat top stove, Sharp Carousel microwave, Overhead exhaust fan, Avonite hard surface counter tops, large S/S sink, ample storage, and oak flooring.

## Master Stateroom

---

Full beam master with ensuite head, large closet, flat screen wall mounted TV, port side dressing table, signature triple windows, and custom interior decor.

---

## VIP Stateroom

---

VIP forward with walkaround queen, under berth storage, 15" LCD color TV, AM/FM stereo CD/DVD, telephone outlet, large hanging locker, private head access door, overhead hatch, and lighting.

---

## Guest Stateroom

---

The Guest Stateroom to starboard contains two single berths, wall mounted 15" LCD TV, AM/FM stereo CD/DVD, hanging locker, accent lighting, and the custom decor package.

---

## Flybridge

---

The Flybridge has dual helm seats, full electronics, dedicated refrigerated drink box, electric grill, wet bar, U-shaped Movidia settee with fixed table, aft sun pad with storage under, bimini top, teak stairs, and a full set of cushion covers.

---

## Electronics & Navigational Equipment

---

Electronics duplicated at main helm, and flybridge include, Garmin 1212 Color plotters, Garmin Radar, Furuno RD-30 depth/speed, Furuno Nav Pilot, Icom VHF, Side Power bow thruster, ACR remote spotlight, remote anchor windlass control, Lenco trim tabs, lower helm window defroster with 3 blade washer/wipers, two INTELELLIAN Sat/Com domes.

---

## Aft Deck

---

The teak Aft Deck is protected with the flybridge overhang, and has Movidia seating for five, fresh water shower, teak steps to the teak swim platform, engine room hatch, electrical/storage room hatch, overhead lighting, outdoor speakers, stainless steel cleat bases, 550 lb. electro-hydraulic Davit system, stainless steel side rails, foredeck sun pad, electric windlass with chain, and anchor.

---

## Electronics

---

- Depthsounder
- Log-speedometer
- Repeater(s)

- Navigation center
- Plotter
- Autopilot
- Compass
- GPS
- VHF
- Radar
- TV set
- DVD player
- CD player
- Cockpit speakers

---

## Inside Equipment

---

- Bow thruster
- Electric bilge pump
- Manual bilge pump
- Battery charger
- Air conditioning
- Heating
- Hot water
- Sea water pump
- Washing machine
- Microwave oven
- Marine head
- Refrigerator

---

## Electrical Equipment

---

- Shore power inlet
- Generator
- Inverter
- Electrical Circuit: 24V

---

## Additional Features

---

- Teak cockpit
- Cockpit cushions
- Swimming ladder
- Cockpit shower
- Davits



- Electric windlass
- Bimini top

---

## Remarks

---

"Carinat" is the only VSC/Princess 54 M/Y, built for the USA, available on the brokerage market today!!. Since her purchase the owner has added Dual Intellellian Sat/Com domes, dual Garmin 1212 Plotters, Garmin radar, custom white leather salon settee, and lower helm seats, spare prop, and a Volvo service. "Carinat" is turn key, at a compelling value relative to purchasing new.

---

## Exclusions

---

Tender Is Not Included

---

## Exclusions

---

Owner's personal belongings.

---

## Disclaimer

---

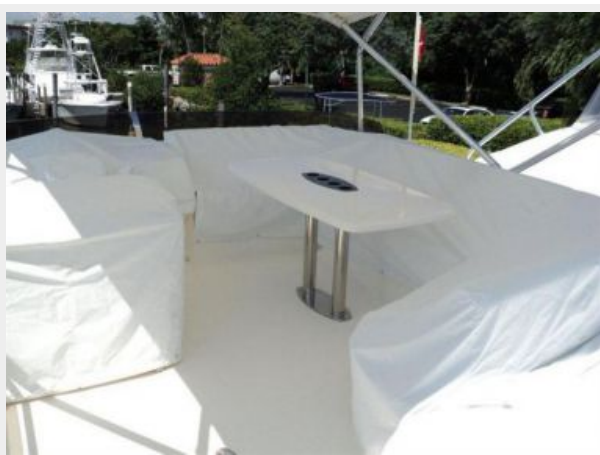
The Company offers the details of this vessel or yacht in good faith but cannot guarantee or warrant the accuracy of this information nor warrant the condition of the vessel. A buyer should instruct his representatives, agents, or his surveyors, to investigate such details as the buyer desires validated. This vessel or yacht is offered subject to prior sale, price change, or withdrawal without notice.

# PHOTOS



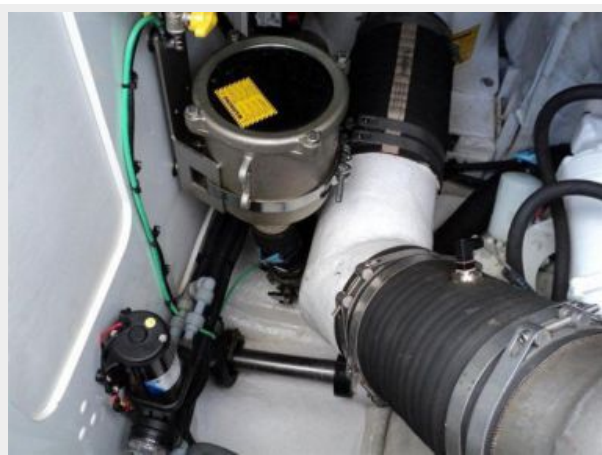
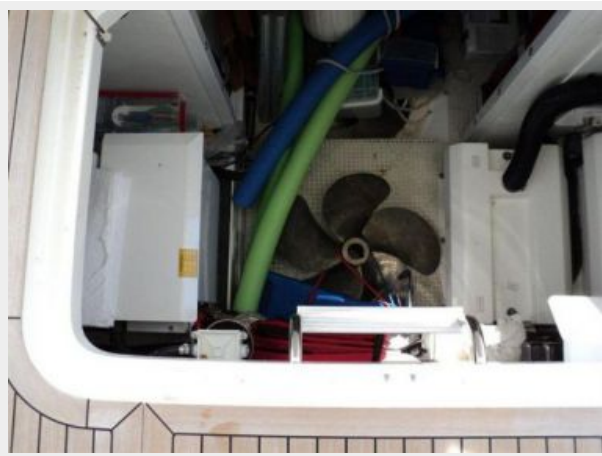
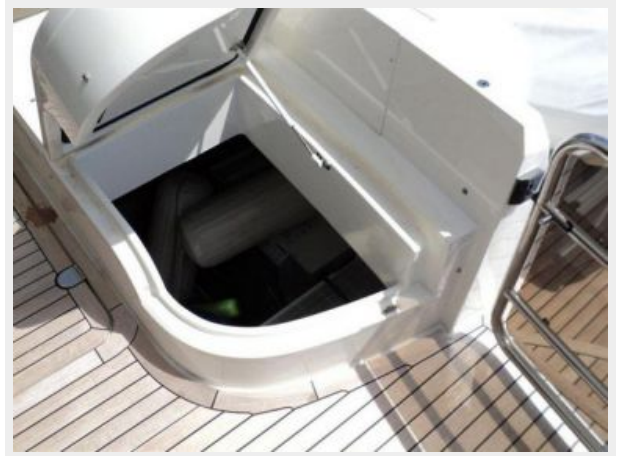




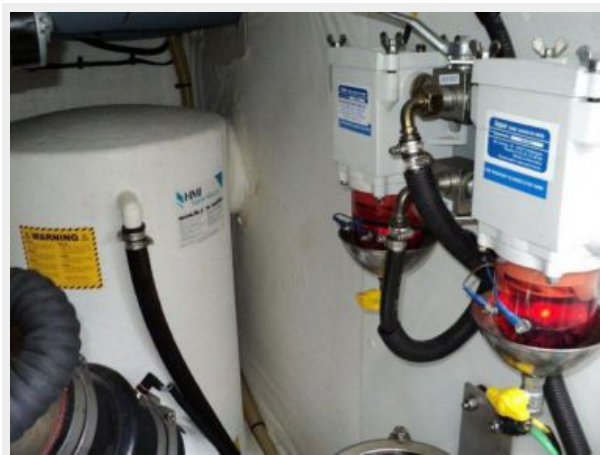












# CONTACTS

---

Andrey Shestakov, leading yacht broker of the sales department of Shestakov Yacht Sales Inc. Shestakov Yacht Sales Inc., the official representative of the Miami/Fort Lauderdale FL headquarters.

## Contact details

---

Email: [andrey@shestakovyachtsales.com](mailto:andrey@shestakovyachtsales.com)

Web: [shestakovyachtsales.com/en/](http://shestakovyachtsales.com/en/)

## Telephones

---

USA: +1(954)274-4435

## Office hours

---

Monday – Saturday: **9:00 - 21:00** EDT

Sunday: **closed**

## Address

---



Harbour Towne Marina, 850 NE 3rd St,  
STE 213, Dania, FL 33004