

RUNNING HOT — VIKING



Судостроитель: VIKING

Год постройки: 2001

Модель: Катер для спортивной рыбалки

Цена: **ЦЕНА ЯХТЫ ПО ЗАПРОСУ**

Местонахождение: United States

Длина общая: 55' 0" (16.76m)

Ширина: 17' 4" (5.28m)

Макс. осадка: 4' 10" (1.47m)

Крейс. скорость: 32 Kts. (37 MPH)

Макс. скорость: 39 Kts. (45 MPH)

Купить **RUNNING HOT — VIKING** а также выбрать подходящую вам яхту из нашего каталога яхт вам поможет опытный яхтенный брокер Андрей Шестаков. На сегодняшний день компания **Shestakov Yacht Sales Inc.** имеет большое количество яхт в собственном списке продаж, а также тесно сотрудничает со всеми крупными яхтенными производителями по всему миру.

Для того чтобы купить яхту **RUNNING HOT — VIKING** а также проконсультироваться по любому вопросу связанному с покупкой, продажей, чартером яхт позвоните по телефону **+7(918)465-66-44**.

ОГЛАВЛЕНИЕ

ОГЛАВЛЕНИЕ	2
ХАРАКТЕРИСТИКИ	4
Обзор	4
Основная информация	4
Размеры	4
Скорость, вместимость и масса	4
Корпус и палуба	5
Информация о двигателе	5
ПОДРОБНОЕ ОПИСАНИЕ	6
Salon	6
Galley	6
Master Stateroom	7
VIP Stateroom	7
Guest Stateroom	7
Starboard Head	8
Flybridge	8
Electrical System	9
Engine /Mechanical Equipment	9
Electronics and Navigational Equipment	9
Cockpit	10
Исключения	11
Отказ от ответственности	11
ФОТОГРАФИИ	12
Main Salon	12
Main Salon	12
Dinette	12
Galley	12
Master Stateroom	12

Master Stateroom	12
Master Bathroom	13
Master Stateroom	13
VIP Stateroom	13
Guest Stateroom	13
Laundry	14
Guest Stateroom	14
Flybridge	14
Flybridge	14
Flybridge	14
Flybridge	14
Bow	15
Garmin	15
Garmin display	15
Flybridge controls display	15
КОНТАКТЫ	16
Контактная информация	16
Телефоны	16
Время работы	16
Адрес	16

ХАРАКТЕРИСТИКИ

Обзор

55' Viking Sportfish new to market impeccably maintained. Proven performance with elegant accommodations. Upgraded Décor and audio/video entertainment package. Three stateroom interior with amidships master stateroom, VIP stateroom and guest stateroom all with ample storage. Well appointed Galley with Subzero under counter refrigerators and freezers, huge amounts of storage in high gloss cabinetry with slide out pantry drawers. Corian countertops, Amtico Teak and Holly floors, Kenmore washer and dryer. Huge 153 square foot cockpit with Release Marine teak fighting chair. Flybridge features wraparound helm area with Release Marine teak helmsman chairs, strata glass enclosure, generous seating and air conditioning. 32 knot cruising speed 39 knot max. Owner has spared no expense in keeping this vessel in remarkable condition.

Complete Garmin electronics package new in 2013! Three Garmin 7215 touch screen displays, one Garmin 7212 touch screen display!

Основная информация

Тип судна: Катер для спортивной рыбалки

Модельный год: 2001

Год постройки: 2001

Страна: United States

Кубрик: Да

Размеры

Длина общая: 55' 0" (16.76m)

Ширина: 17' 4" (5.28m)

Макс. осадка: 4' 10" (1.47m)

Скорость, вместимость и масса

Крейс. скорость: 32 Kts. (37 MPH)

Макс. скорость: 39 Kts. (45 MPH)

Вместимость воды: 250 Gallons

Объем топливного бака: 1300 Gallons

Корпус и палуба

Материал корпуса: Fiberglass

Информация о двигателе

Двигатели: 2

Производитель: MAN

Модель: 2842LE404

Тип двигателя: Inboard

ПОДРОБНОЕ ОПИСАНИЕ

Salon

The salon features an upgraded audio/video entertainment center with surround sound throughout and Samsung 42" flat screen television, a large upgraded L-shaped leatherette sofa with custom teak coffee table and end table.

- 42" Samsung Television
- Upgraded Audio and Home Theater System
- Scotsman large capacity icemaker
- Sat Phone
- Satellite T.V.
- Teak interior and tinted windows
- Ceiling lights w/ dimmer switch
- Salon and companionway carpet runners
- Hunter Douglas silhouette window treatments
- Upgraded ultra-leather L-shaped sofa
- Teak coffee table
- Separate dinette seating with teak dining table
- Pleated Ultra leather L-shape couch in dinette
- Dinette seats 5 persons comfortably
- Salon slide door
- Five (5) drawers and storage cabinets
- Easy eye level access to electric panel
- Carpet runners throughout vessel
- Companionway linen closet

Galley

- 110V outlets
- Exhaust fan (stove top)
- Sharp microwave/convection oven
- 3-burner ceramic stove top
- Magna Sahara Corian counters
- Magna Sahara Corian backsplash and mirror
- Water level gauge
- Instant hot water dispenser
- Garbage disposal
- Ample storage cabinets w/slide out pantry drawers
- Amtico teak and holly floors
- Undercounter SubZero freezer (2-drawer)
- Undercounter SubZero refrigeration (4-drawer)
- Additional 110V plug in galley
- Huge amount of galley storage in slide-out drawers and cabinets
- Companionway pantry
- Kenmore washer and dryer
- Central vacuum system

Master Stateroom

The Master Stateroom features a walk around queen bed, two night stands, credenza and vanity. The ensuite head features brass fixtures, full mirror around vanity, one piece shower door and linen storage.

- Walk-around queen bed with lift top and storage underneath
- Custom cedar-lined hanging lockers
- Ocean air screen/shade
- Separate A/C control
- Storage drawers
- Brass finish on all hardware
- Samsung TV
- Samsung DVR
- JVC Stereo
- Separate Sat TV connection
- Decorative mirror at headboard
- Bomar hatch with slide screen
- SMX AC control head
- Cabinet storage drawers (13 total)
- Ceiling lights, reading lights and side bed lamps

VIP Stateroom

- Crossover bunks with wider lower bed
- 60/40 size crossover berths
- Ocean air screen/shade
- Separate A/C controls
- Cedar-lined hanging locker
- Brass finish on all hardware
- Storage drawers
- Samsung TV
- Samsung DVR
- JVC Stereo
- Bomar hatch with slide shade
- SMX AC control head
- Six (6) storage drawers large shelf
- Under bed storage
- Bomar hatch with slide screen
- Ceiling lights and reading lights

Guest Stateroom

- Upper & lower single bunks
- Storage drawers
- Storage drawers(4 total)
- Hanging Closet door with mirror

- Reading lights both bunks
- Cedar-lined hanging locker with rod rack
- Separate A/C control
- Lower bunk has underneath storage
- Bomar Hatch with slide shade

Starboard Head

The starboard head services the guest stateroom and the VIP stateroom with a semi-private entrance and access from the companionway.

- Oval Sink
- Mirror Cabinet Doors with shelves
- Under sink cabinet
- Bi-Fold Glass shower door
- Shower has seat
- Silver GROHE bathroom fixtures
- Amtico floor
- Magna Sahara Corian vanity top

Flybridge

- Wrap around helm console and hard top with cockpit overhang
- Two Release Marine teak helmsman chairs with covers
- Glendinning single lever pod controls with trolling valves
- Insulated Drink box
- Freshwater wash down
- Custom helm pod
- Strata glass enclosure
- Air conditioning
- 8 Step Ladder to FB from cockpit
- Freshwater wash down spigot
- Seating cushions
- 2 Teaser Reels-Reel Colors
- Surround sound speakers
- Spreader lights
- ACR RCL 100 point pad spotlight
- Rupp Triple spreader outriggers
- Helm console cover

Electrical System

- 20 KW Onan generator
- Voltage stabilizer transformers with Isoboost
- (C Power 12 VA transformer)
- (C Power Isoboost 50)
- Glendinning Cablemaster shore power cord
- Bonded electrical system with ground plate

Engine /Mechanical Equipment

- Engine room fans
- 12 Volt lighting
- 110 Volt lighting
- Freshwater pump
- Y-valve emergency bilge pumps
- Fuel system priming pumps
- Bilge pumps
- Back-up 12 Volt water pressure pump
- Remote mounted starboard oil filters
- Fuel/water separators
- Water heater
- Power steering by Seastar
- Cruise air AC units with reverse cycle heat
- Blue Seals for shafts
- Eskimo Ice Chipper-600 lbs per day
- Freshwater pump by Flotec
- Live bait well pump 110 Volt
- Power assist steering
- Awlgrip White brass thru hulls
- Automatic fire protection system
- A/C discharge through exhaust pipe outlet
- Eskimo ice chipper feeding to cockpit ice box
- 110 Volt saltwater pressure pump
- Engine and generator mufflers
- Freshwater system with filter
- Oil changing system

Electronics and Navigational Equipment

- Furuno 72 mile color radar
- Furuno color video sounder

- Northstar 962 GPS/Plotter
- Northstar 957 GPS/Plotter
- Simrad AP22 autopilot
- SEA 235 SSB radio
- Horizon Spectrum VHF
- Horizon Intrepid VHF
- Glendinning single lever controls Take control Touch Pad
- Standard MP 5100 hailer system w/ remote speaker
- Ritchie compass
- Insulated drink box w/ freshwater outlet
- ACR RCL-100 Point Pad Spotlight
- Satellite T.V.
- Complete Garmin electronics package new in 2013! Three Garmin 7215 touch screen displays, one Garmin 7212 touch screen display!

Cockpit

- Release Marine Teak Fighting Chair with cover
- Misters Unlimited misting system
- Livewell in Cockpit sole
- Insulated step box to salon
- Freezer
- Transom door
- Underwater lights
- Two 8" Chromed Cleats in cockpit
- Large access door to Engine Room
- Covering Boards and Deck are non-skid finish
- Cockpit has a Backdrop cover
- Lighting under covering boards
- Bose Speakers under covering boards
- Custom Cockpit seating cushions
- 4 Drawer tackle center
- 6 Lees Rod holders-swivel type
- 6 Rod Holders on flybridge tower
- Fish box with macerator
- Eskimo dump into deck box
- All deck lids are hinged
- Stern storage box accesses to back bilge
- 6x 8 Chromed Cleats
- Fuel, Water and Waste access caps.
- 3 Bomar Hatches
- Anchor Locker with fresh water spigot
- Fortress Anchor and Ground Tackle

- Wiring for Anchor winch
- House and wing handrails
- Macerator pump-out for fish box
- Anchor & anchor rode in recessed rope lockers
- Dockside water intake
- Freshwater and saltwater wash downs
- Fiberglass step box
- Acoustical and thermal insulation
- 1500 lb. Davit

Исключения

При продаже яхты исключаются личные вещи владельца.

Отказ от ответственности

Компания предоставляет описание судна или яхты добросовестно, но не может гарантировать точность этой информации, а также не ручается за техническое состояние. Покупатель должен проинструктировать своих агентов или оценщиков исследовать представленную информацию более подробно, по собственному желанию. Продажа судна или яхты, изменение цены или снятие с продажи будет происходить без предварительного уведомления.

ФОТОГРАФИИ

Main Salon



Main Salon



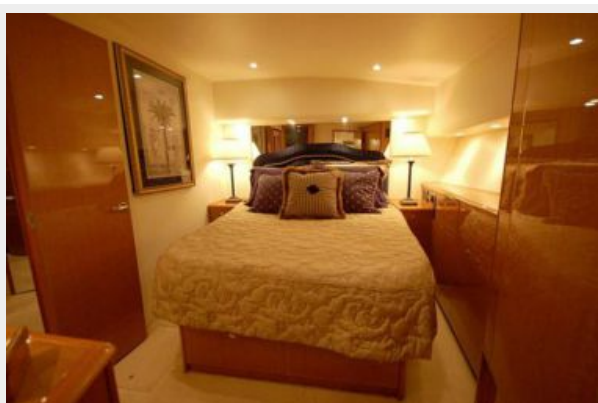
Dinette



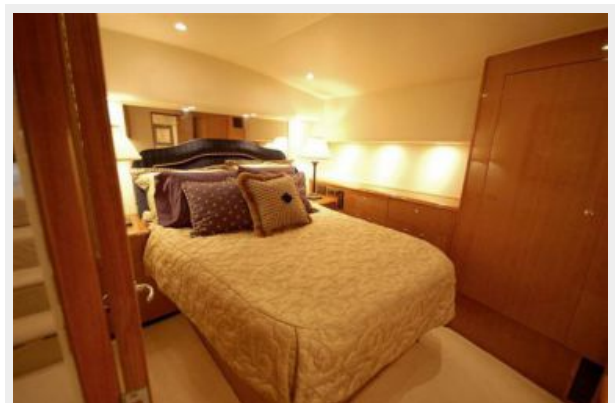
Galley



Master Stateroom



Master Stateroom



Master Stateroom



Master Bathroom



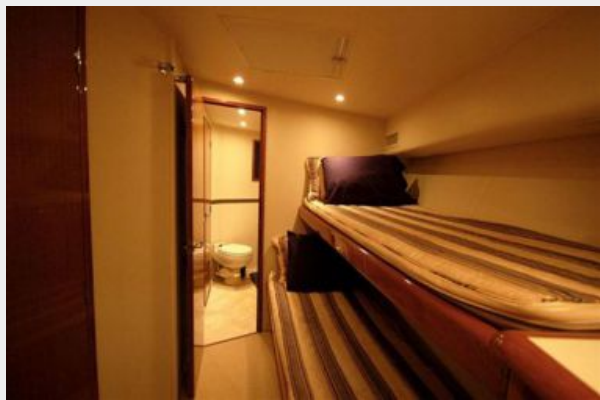
VIP Stateroom



Guest Stateroom



Guest Stateroom



Laundry



Flybridge



Flybridge



Flybridge



Flybridge



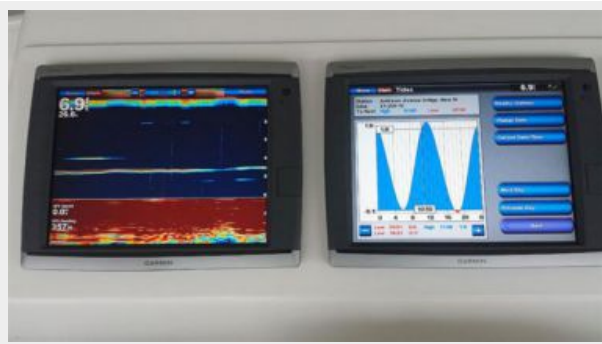
Bow



Garmin



Garmin display



Flybridge controls display



КОНТАКТЫ

Андрей Шестаков (Andrey Shestakov) – ведущий яхтенный брокер отдела продаж яхт и судов компании Shestakov Yacht Sales Inc. Официальный представитель Shestakov Yacht Sales Inc. для русскоговорящих клиентов в центральном офисе компании в Майами/Форт Лодердейл/Флорида/США.

Контактная информация

Email: andrey@shestakovyachtsales.com

Web: shestakovyachtsales.com

Телефоны

Краснодарский край: **+7(918)465-66-44**

США, Майами, Флорида: **+1(954)274-4435**

Время работы

Понедельник – Суббота: **9:00 - 21:00**
EDT

Воскресенье: **Закрито**

Адрес



Harbour Towne Marina, 850 NE 3rd St,
STE 213, Dania, FL 33004