

AUSSEA — MARITIMO



Builder: MARITIMO

Year Built: 2008

Model: Motor Yacht

Price: PRICE ON APPLICATION

Location: United States

LOA: 48' 0" (14.63m)

Beam: 16' 9" (5.11m)

Max Draft: 4' 4" (1.32m)

Our experienced yacht broker, Andrey Shestakov, will help you choose and buy a yacht that best suits your needs **AusSea — MARITIMO** from our catalogue. Presently, at Shestakov Yacht Sales Inc., we have a wide variety of yachts available on our sale's list. We also work in close contact with all the big yacht manufacturers from all over the world.

If you would like to buy a yacht **AusSea — MARITIMO** or would like help answering any questions concerning purchasing, selling or chartering a yacht, please call **+1(954)274-4435**

TABLE OF CONTENTS

TABLE OF CONTENTS	2
SPECIFICATIONS	6
Overview	6
Basic Information	6
Dimensions	6
Speed, Capacities and Weight	7
Accommodations	7
Hull and Deck Information	7
Engine Information	7
DETAILED INFORMATION	8
Overview	8
Vessel Walkthrough	8
Salon & Galley	9
Galley	10
Entertainment & Convenience	10
Enclosed Bridge	11
Helm	11
Master Stateroom	11
Master Head	12
VIP Forward Stateroom	12
VIP Head	13
Guest Stateroom 3	13
Cockpit	13
Deck	14
Mechanical Equipment	14
Electrical System	15
Remarks	16
Exclusions	16

Disclaimer	16
PHOTOS	17
Galley	17
Salon	17
Master Berth	17
Smartcraft	17
Salon	17
Salon	17
Salon	18
Salon	18
Steps to Enclosed Bridge	18
Storage	18
Master Stateroom	18
Master Berth	18
Master Head	19
Master Shower	19
VIP Stateroom	19
Third Stateroom	19
Guest Head & Shower	20
Upper Bunk	20
Guest Shower	20
Washer & Dryer, Third Stateroom	20
Lower Bunk	21
Electrical Panel	21
Battery Switches	21
Helm Area	21
G Series RayMarine	21
Captain & Mate Stidd Seats	21
Settee	22

Enclosed Bridge	22
Port Settee	22
Teak Cockpit	22
Cockpit BBQ & Refrigerator	22
Cockpit Freezer	22
Lazarette	23
Engine Room Access	23
Swim Platform	23
Swim Platform Lockers	23
Walk Around Teak Sidedecks	23
Gangway	23
Dinghy & Davit	24
Windlass & Anchor Roller	24
Anchor Lockers	24
Port Engine	24
Starboard Engine	24
Forward of Starboard Engine	24
Outboard of Engine	25
(2) 24V Battery Banks	25
Generator	25
Racors & Sight Tube	25
Inverter	25
Equipment Space	25
Flat Shaft Angel	26
The Captain	26
Aft Quarter	26
Starboard Side	26
Forward Quarter	26
CONTACTS	27

Contact details	27
Telephones	27
Office hours	27
Address	27

SPECIFICATIONS

Overview

Long Range Luxury Cruiser CE Category A Rated Excellent Condition, Original Owner, Bottom Paint March/2013 Range of About 400 Nautical Miles at 20 Knots! Fully Enclosed Fly Bridge 3 Staterooms, 2 Heads Amid-ships Master, Aft Galley Mechanical & Cooling System Service October 2015

- Twin Cummins QSM-11 670 HPea 880 Hours
- Onan 21.5 Generator
- 2 G-Series Raymarine Displays
- 2 Smartcraft Displays
- Bow & Stern Thrusters
- Enclosed Bridge
- Internal Stairs
- Walk Around Decks
- Cockpit Engine Controls
- Amtico Wood Flooring in Salon-2014
- 72,000 BTU Reverse Cycle A/C
- SAT/TV
- Central Vacuum
- Bose Surround Sound
- Washer/Dryer
- Cockpit BBQ & Freezer
- AB 10VS Console Dingy
- Tohatsu 4 Stroke 20 HP
- 770 Lbs. Davit

This is a beautiful yacht that was custom built for her current owners and has been meticulously maintained since new. She is for sale now because her owners are ready to downsize.

Basic Information

Category: Motor Yacht

Sub Category: Flybridge

Model Year: 2008

Year Built: 2008

Country: United States

Coast Guard #: 1212044

Fly Bridge: Yes

Cockpit: Yes

Dimensions

LOA: 48' 0" (14.63m)

Beam: 16' 9" (5.11m)

Max Draft: 4' 4" (1.32m)

Speed, Capacities and Weight

Displacement: 47200 Pounds

Water Capacity: 215 Gallons

Holding Tank: 80 Gallons

Fuel Capacity: 945 Gallons

Accommodations

Total Cabins: 3

Total Berths: 4

Sleeps: 6

Total Heads: 2

Hull and Deck Information

Hull Material: Fiberglass

Deck Material: Fiberglass

Hull Configuration: Semi Vee

Hull Color: White

Engine Information

Engines: 2

Manufacturer: Cummins

Model: QSM 11

Engine Type: Inboard

Fuel Type: Diesel

DETAILED INFORMATION

Overview

Long Range Luxury Cruiser

Almost 500 Nautical Miles at about 25 Knots!

Fully Enclosed Fly Bridge

3 Staterooms, 2 Heads

Amid-ships Master

Aft Galley

- **Twin Cummins QSM-11 670 HP**
- **Onan 21.5 Generator**
- **2 G-Series Raymarine Displays**
- **2 Smartcraft Displays**
- **Bow & Stern Thrusters**
- **Enclosed Bridge**
- **Internal Stairs**
- **Walk Around Decks**
- **Cockpit Engine Controls**
- **Amtico Wood Flooring in Salon-2014**
- **72,000 BTU Reverse Cycle A/C**
- **SAT/TV**
- **Central Vacuum**
- **Bose Surround Sound**
- **Washer/Dryer**
- **Cockpit BBQ & Freezer**
- **AB 10VS Console Dingy**
- **Tohatsu 4 Stroke 20 HP**
- **770 Lbs. Davit**

This is a beautiful yacht that was custom built for her current owners and has been meticulously maintained since new. She is for sale now because her owners are ready to downsize.

Vessel Walkthrough

The 48 Maritimo offers a wonderful life style. For cruising and entertaining, or diving and fishing, this boat is all about having a great time with your family and friends! Her impressive looks will draw lots of compliments at the marina and she'll take you far off the beaten path whenever you want to get away. Step aboard and you will be impressed by the large cockpit with aft engine controls, built in transom BBQ and freezer, and solid teak decking that is as functional as it is attractive. She is in extraordinary condition throughout.

From the cockpit, the sliding glass doors lead directly to the aft galley, the internal stairs up to the enclosed fly bridge and upper deck, and salon with Amtico Wood Flooring. On the bridge, in the salon, or in any of the three staterooms, you can crank up the 72,000 BTU's of reverse cycle A/C or open the windows and hatches and let the fresh air breeze through.

A full walk around with teak side decks, deep bulwarks, and rock solid stainless steel railings offer safe and easy access from the cockpit to the bow. The huge lazarette hatch on gas shocks in the cockpit leads to the closest thing to a floating garage. Whatever your mission, there is more than enough room for your supplies here. Another large hatch on gas shocks leads to the cleanest, best laid out engine room you can imagine. Port and starboard transom doors lead to a large swim platform with wet lockers, a folding swim ladder, and a convenient gangway for boarding.

Through the salon and down the steps, amid-ships to port is the master stateroom with an island queen with inner spring mattress that raises on gas shocks to reveal an incredible hanging and storage area. The ensuite head is bright, open, and easy to clean featuring generous storage and a large separate glass shower. The VIP stateroom is forward with a centerline island with inner spring mattress and private access to the guest head to starboard, which is just as nice as the master head. Aft of the guest head, opposite the master on the starboard side is the third stateroom with two single bunk beds running fore and aft and the washer/dryer combination. These bunks can also be used for storage or an office.

Salon & Galley

The unique aft galley with sliding glass doors to the cockpit is ideal for entertaining and cruising. Located between the cockpit and the salon, at the base of the internal stairs to the enclosed bridge, the galley is in the center of everything happening on the boat. The bright and airy salon features two L-shaped settees with generous storage under and a drop leaf table. The beautiful satin finish Myrtle wood cabinetry and trim and the lush Ultraleather upholstery create a warm and inviting atmosphere. The Salon has NEW Amtico Wood Flooring to match the Galley. Luxaflex window blinds, tinted glass, and Textaline window covers enable ample A/C to cool comfortably on the hottest days. Opening side windows, a door forward to the side deck on the starboard side, and sliding glass doors aft allow the breezes to flow through when the weather permits. AC and DC electrical panels are conveniently located aft to port at the base of the internal stairway to the enclosed bridge.

- Satin Finish Myrtle Wood
- Amtico Wood Flooring
- (3) Forward Storage Lockers

- (2) L-Shaped Settees w/Storage
- Wooden Drop Leaf Table
- Ultraleather Upholstery
- Luxaflex Window Fashions Blinds
- Mood Light Rope Lighting
- Bose Surround Sound AM/FM/CD/DVD
- SAT/TV
- 26" Majestic Digital Slim TV
- 24,000 BTU A/C
- (2) L-Shaped Settees
- Sliding Glass Doors to Cockpit
- Internal Stairs to Enclosed Bridge
- Steps Down to Stateroom
- Lighted Handrail
- Door to Side Deck Forward to Starboard
- Opening Windows
- Tinted Glass
- Textaline Window Covers
- Aft Galley
- AC/DC Electrical Panels Aft to Port
- All Battery Switches Aft to Port

Galley

- Aft Galley
- Sliding Glass Door to Cockpit
- Amtico Flooring
- Solid Surface Counter Top
- Under Counter Stainless Steel Sink
- Filtered Water Tap
- Contoure 3 Burner Electric Cook Top
- Shirflo Pull Out Single Lever Faucet
- Tappan Convection Microwave
- Fisher & Paykel Dishwasher
- Liebherr Refrigerator & Freezer

Entertainment & Convenience

- SAT/TV
- 26" Majestic Digital Slim TV
- Bose Surround Sound AM/FM/CD/DVD
- 72,000 BTU's of Reverse Cycle A/C & Heat
- 21.5 KW Onan Generator
- Central Vacuum
- Aft Galley
- Cockpit BBQ & Freezer
- Cockpit Engine Controls
- Bow & Stern Thrusters
- Foredeck Dinghy Cradle and Davit
- Gangway
- Cable Master

Enclosed Bridge

Even after a long passage in rough weather, you will arrive feeling rested and fresh after a day at the helm in the fully enclosed heated and cooled fly bridge with matching captain and mate Stidd seats. Tied up at your favorite marina or anchored in a secluded harbor, at sunrise with coffee or sunset with drinks, through the enclosed bridge sliding glass doors the upper aft deck will be your private balcony for you to relax and look out on the world around you.

- (2) Stidd Seats
- Sliding Glass Doors to Deck w/Awning
- 24,000 BTU A/C
- L-Shaped Settee
- Satin Finish Wood Table
- Sink
- Refrigerator
- Overhead Hatch w/Shade/Screen
- Opening Windshield
- Opening Side Windows
- Tinted Glass
- Inside Textaline Window Covers
- Central Vacuum

Helm

Even after a long passage in rough weather, you will arrive feeling rested and fresh after a day at the helm in the fully enclosed heated and cooled fly bridge with matching captain and mate Stidd seats.

- Captain & Mate Ultraleather Stidd Seats
- (2) 12" G Series Raymarine Displays
- Simrad AP 25 Autopilot
- Bow & Stern Thrusters
- (2) Smartcraft Displays
- Electronic Engine Controls
- Spot Light
- Compass
- Icom IC-M604 VHF
- Raymarine Tri-Data
- Wood Grain Tilt Wheel

Master Stateroom

Through the salon and down the steps with a lighted hand rail, amid-ships to port is the master stateroom with an island queen with inner spring mattress that raises on gas shocks to reveal an

incredible hanging and storage area. The ensuite head is bright, open, easy to clean, and features generous storage and a large separate glass shower. There is a deck hatch with a roll up screen/shade and a stainless steel opening port in both the master stateroom and the master head. There is also a dedicated 12,000 BTU reverse cycle A/C unit for the master stateroom.

- 12,000 BTU Reverse Cycle A/C
- Island Queen Inner Spring Mattress
- Gas Shock Actuated Bed
- Incredible Hanging and Storage under Bed
- (2) Night Stands
- (2) Additional Custom Storage Lockers
- Hanging Locker
- Deck Hatch w/Screen/Shade
- Stainless Steel Opening Port

Master Head

- Vessel Sink
- Large Glass Shower Stall
- Generous Storage
- Opaque Deck Hatch w/Screen/Shade
- Stainless Steel Opening Port
- Tecma Electric Head
- A/C Vent
- Exhaust Fan

VIP Forward Stateroom

The VIP stateroom is forward and features a centerline island berth with an inner spring mattress and private access to the guest head. There is another 12,000 BTU reverse cycle A/C unit for this area and a deck hatch with a roll up screen/shade. There is plenty of storage in two hanging lockers, two storage lockers, two shelves and drawers.

- Centerline Island Berth
- Inner Spring Mattress
- 12,000 BTU A/C
- Deck Hatch w/Screen/Shade
- (2) Hanging Lockers
- Storage Lockers
- Shelves
- Drawers
- Private Access to Guest Head

VIP Head

There is private access to the guest head from the VIP stateroom in addition to access from the hallway. The guest head is large, bright, easy to clean and very well appointed. It features a vessel sink, generous storage, a large separate glass shower stall, exhaust fan, A/C vent, and an opening stainless steel port.

- Vessel Sink
- Large Glass Shower Stall
- Tecma Electric Head
- Opaque Deck Hatch w/Screen/Shade
- Stainless Steel Opening Port
- Generous Storage Lockers
- A/C Vent
- Exhaust Fan

Guest Stateroom 3

The 3rd stateroom is located aft of the guest head, on the starboard side of the boat opposite the master stateroom. It has upper and lower single berths running fore and aft on the outboard side. One or both of these berths may be converted for storage or and office. The washer/dryer unit is located here. There is also a hanging locker, a deck hatch, and a stainless steel opening port.

- Upper and Lower Single Berths
- Convertible to Storage or Office
- Washer Dryer
- Hanging Locker
- A/C Vent
- Deck Hatch w/Screen/Shade
- Stainless Steel Opening Port

Cockpit

The Maritimo lifestyle begins as soon as you step into the large secure cockpit. Sliding glass doors open directly into the aft galley and built into the transom is an electric BBQ with a large hinged lid that becomes a serving counter when opened. Also in the transom is a large, very efficient brine system freezer/refrigerator with a water cooled compressor. This cockpit is not just for catching fish, it's great for cooking them too! Starboard and port transom doors lead to the large swim platform with two wet lockers, a folding swim ladder, and stainless steel brackets for the portable gangway. For a party at the marina, diving your favorite reef, or launching your water

toys, the Maritimo 48 is ideal!

- Sliding Glass Doors to Aft Galley & Salon
- Cockpit Engine Controls
- Transom BBQ
- Transom Freezer/Refrigerator
- Teak Decking
- Stainless Hand Rails
- Overhead Lighting
- Walk Around Teak Side Decks
- Port & Starboard Transom Doors
- Hot & Cold Cockpit Shower
- Folding Swim Ladder
- (2) Swim Platform Wet Lockers
- Gas Shock Hatch to Huge Lazarette
- Gas Shock Hatch to Superb Engine Room

Deck

The teak decking continues from the cockpit to the secure walk-around side decks with deep bulwarks and beautifully welded, extremely solid stainless steel rails. The teak is in excellent condition. Stylish overhangs offer some shade and a nifty place to keep your boat hook. There is non-skid fiberglass on the foredeck and cabin top. The quality of the finish work and the strength of the bow rail are very impressive. The deck and cabin house are incredibly solid under foot as testimony to the structural integrity of the Maritimo. The 48 Maritimo is built to support the optional 770 Lb. davit which is installed on the cabin top. The deck hatches are designed so they can be opened with the dinghy mounted on the cabin top. Forward on the starboard side there is door to the side deck from the salon.

- 770 Lb. Davit
- AB 10VS Console Tender
- VMT Tender Cradle
- 20 HP Tohatsu 4 Stroke O.B.
- Stainless Steel Bruce Anchor w/Chain Rode
- Fortress Anchor w/Nylon Rode
- Muir 3500 24V Reversible Windlass w/Foot Switch & Helm Controls
- Heavy Duty Self Loading Anchor Roller
- Divided Anchor Locker
- Wash Down
- Custom Stainless Steel Rails and Cleats
- Optional Textaline Window Covers

Mechanical Equipment

The engine room is exceptional. There is excellent access all the way around both engines. It is clean, well lit, and roomy with convenient entry through the cockpit hatch. The fiber glass pan and engine beds provide a finely finished gel coat surface. Foam with vinyl covering insulates for quiet operation and a finished look in the engine room. Filtered air intakes through the cabin

house rather than the hull sides dramatically reduce salt air in the engine room and results in reduced corrosion of all metal parts throughout the engine room. The single 945 gallon fiberglass fuel tank forms a structural water tight bulkhead forward in the engine room. Located on the center of buoyancy, the fuel level does not affect the trim of the vessel. A sight tube shows the exact fuel level. There is plenty of room outboard of the engines where molded boxes with hinged lids house all the batteries for the 24v DC engine, house, and inverter systems.

- Twin Diesel Cummins QSM-11
670 HP (845 Hours)
- ZF Transmissions
- 21.5 KW Onan Generator in
Sound Shield
- High Performance Power
Steering
- Dripless Shaft Seals
- Automatic Fire System
- 6 Automatic Electric Bilge
Pumps
- High Water Alarm
- Excellent Engine Access
- 110v AC & 24v DC Lighting
- Fiberglass Fuel Tank Forward
- Fuel Tank Site Tube
- Onan 21.5 KW Generator in
Sound Shield 940 Hrs
- Racor Fuel Filters
- Raw Water Strainers
- ¾ HP A/C Water Circulation Pump
- Convenient Battery Storage
- Water Tight Bulkheads Fore & Aft
- Convenient Access to Engine Room through
Cockpit Hatch
- Sound and Temperature Insulation
- Air Intake Filtration System
- Molded Fiberglass Engine Room Liner and Engine
Beds with Gel Coat Finish
- Engines Forward for Better Shaft Angle and Trim
- Alloy Diamond Plate Floors

Electrical System

The AC and DC panels and all battery switches are conveniently located just inside the salon sliding doors on the port side at the base of the internal stairs to the enclosed bridge. The DC ships service is 24 volts. There are two 110v circuits powered by the 220v 50 Amp shore cord on a Glendinning cord reel or the 21.5 KW Onan Generator. The inverter and dedicated batteries provide 110v AC power to engine room lights and outlets in each head and the galley.

- Onan 21.5 KW Generator in Sound Shield
560 Hrs
- Master Volt 24/2000-60 Sine Wave
- (1) Generator Battery
- 24v DC Electrical Panel in Salon
- All Battery Switches & Parallel Switches

- | | |
|----------------------------------|--|
| Inverter | in Salon |
| • 50 AMP 220 VoltShore Cord | • (2) 110v AC Circuits on Panel in Salon |
| • Glendinning Cord Reel | • Generator Remote Panel in Salon |
| • (4) Engine Start Batteries | • AC and DC Engine Room Lighting |
| • (4) House & Inverter Batteries | |

Remarks

Maritimo is unique in the world of yachting for its common sense approach to design and construction. The result is a craft that is ideal for the cruising lifestyle. She is unmatched in livability-totally self-sufficient with plenty of fuel and power, the cockpit grill, huge storage areas, aft galley, spacious salon, enclosed bridge, full walk-around decks, tender with davit, generous A/C, opening windows, 3 staterooms, amid-ships master and so on. Inside and out she is elegant but simple.

Her hull shape and engines forward design with the fuel tank forward on the center of buoyancy results in very low shaft angles and excellent trim for fuel efficiency and a smooth ride in rough seas. The large fuel tank and efficient performance provide unmatched speed and range for a vessel of this type. Water tight bulkheads provide an extra level of safety at sea. The entire boat and all her systems are simple and robust for dependable, comfortable, long range performance and cruising.

Her impressive good looks will draw lots of compliments at the marina and she'll take you far off the beaten path whenever you want to get away.

Exclusions

Owner's personal belongings.

Disclaimer

The Company offers the details of this vessel or yacht in good faith but cannot guarantee or warrant the accuracy of this information nor warrant the condition of the vessel. A buyer should instruct his representatives, agents, or his surveyors, to investigate such details as the buyer desires validated. This vessel or yacht is offered subject to prior sale, price change, or withdrawal without notice.

PHOTOS

Salon



Galley



Master Berth



Smartcraft



Salon



Salon



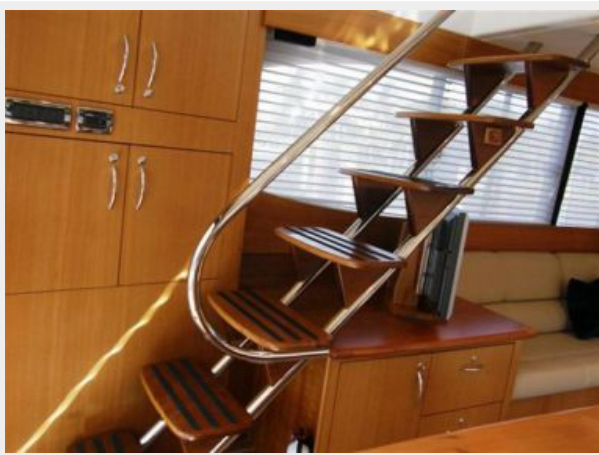
Salon



Salon



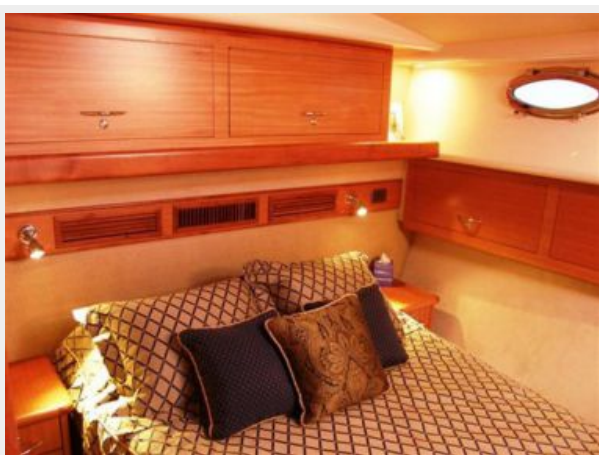
Steps to Enclosed Bridge



Storage



Master Stateroom



Master Berth



Master Head



Master Shower



VIP Stateroom



Third Stateroom



Upper Bunk



Guest Head & Shower



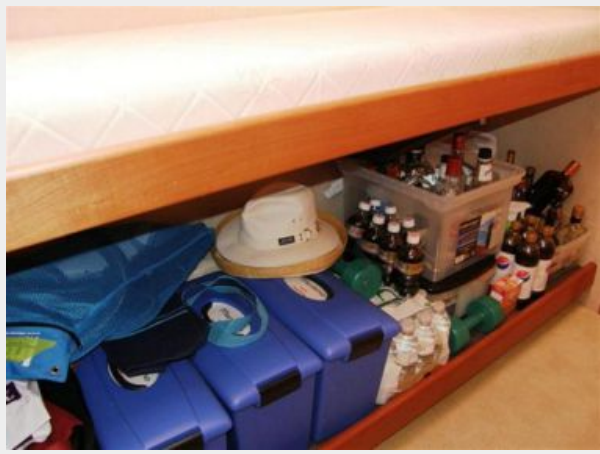
Guest Shower



Washer & Dryer, Third Stateroom



Lower Bunk



Electrical Panel



Battery Switches



Helm Area



G Series RayMarine



Captain & Mate Stidd Seats



Settee



Enclosed Bridge



Port Settee



Teak Cockpit



Cockpit BBQ & Refrigerator



Cockpit Freezer



Lazarette



Engine Room Access



Swim Platform



Swim Platform Lockers



Walk Around Teak Sidedecks



Gangway



Dinghy & Davit



Windlass & Anchor Roller



Anchor Lockers



Port Engine



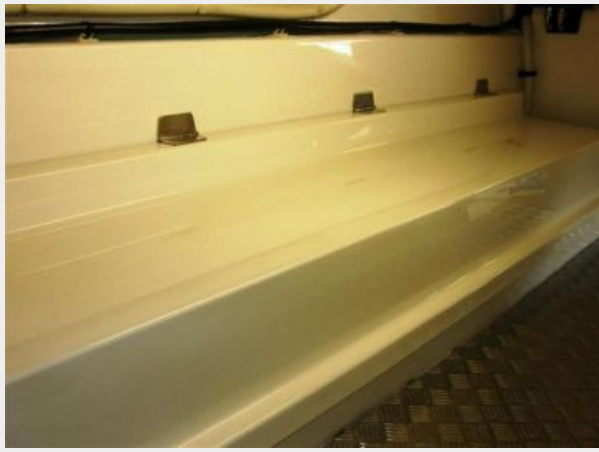
Starboard Engine



Forward of Starboard Engine



Outboard of Engine



(2) 24V Battery Banks



Generator



Racors & Sight Tube



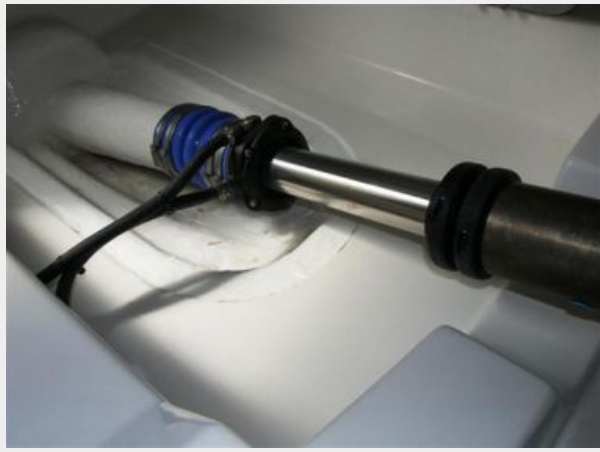
Equipment Space



Inverter



Flat Shaft Angel



The Captain



Aft Quarter



Starboard Side



Forward Quarter



CONTACTS

Andrey Shestakov, leading yacht broker of the sales department of Shestakov Yacht Sales Inc. Shestakov Yacht Sales Inc., the official representative of the Miami/Fort Lauderdale FL headquarters.

Contact details

Email: andrey@shestakovyachtsales.com

Web: shestakovyachtsales.com/en/

Telephones

USA: +1(954)274-4435

Office hours

Monday – Saturday: **9:00 - 21:00** EDT

Sunday: **closed**

Address



Harbour Towne Marina, 850 NE 3rd St,
STE 213, Dania, FL 33004