

## ASSA II — AZIMUT



**Builder:** AZIMUT

**Year Built:** 2008

**Model:** Cruiser

**Price:** PRICE ON APPLICATION

**Location:** United States

**LOA:** 68' 0" (20.73m)

**Beam:** 17' 0" (5.18m)

**Min Draft:** 5' 2" (1.57m)

**Cruise Speed:** 32 Kts. (37 MPH)

**Max Speed:** 38 Kts. (44 MPH)

Our experienced yacht broker, Andrey Shestakov, will help you choose and buy a yacht that best suits your needs **ASSA II — AZIMUT** from our catalogue. Presently, at Shestakov Yacht Sales Inc., we have a wide variety of yachts available on our sale's list. We also work in close contact with all the big yacht manufacturers from all over the world.

If you would like to buy a yacht **ASSA II — AZIMUT** or would like help answering any questions concerning purchasing, selling or chartering a yacht, please call **+1(954)274-4435**

# TABLE OF CONTENTS

TABLE OF CONTENTS	2
SPECIFICATIONS	4
Overview	4
Basic Information	4
Dimensions	4
Speed, Capacities and Weight	4
Accommodations	4
Hull and Deck Information	5
Engine Information	5
DETAILED INFORMATION	6
Vessel Walkthrough	6
Vessel Highlights	6
Cabin	6
Galley	7
Master Stateroom/ Aft	8
Master Head	8
VIP Stateroom/Forward	9
VIP Head	10
Guest Stateroom/Amidship/Port	10
Guest Head	11
Crew Quarters	11
Upper Helm Deck	12
Helm	13
Electronics	14
Aft deck	14
Hull and Deck	15
Engine Room and Mechanical Equipment	17
Electrical System	17

---

Exclusions	18
Disclaimer	18
PHOTOS	19
CONTACTS	25
Contact details	25
Telephones	25
Office hours	25
Address	25

---

# SPECIFICATIONS

---

## Overview

---

Besides its stunning profile and good looks, the 68 S Azimut is a very agile and a great running boat. The three stateroom/three head layout gives plenty of comfort below and a luxurious entertaining area above deck. The upper deck is complete with lounges to port and starboard, pop up TV, Bose surround sound, retractable roof, and a fun aft deck!

## Basic Information

---

**Category:** Cruiser

**Sub Category:** Express

**Model Year:** 2008

**Year Built:** 2008

**Country:** United States

**Cockpit:** Yes

## Dimensions

---

**LOA:** 68' 0" (20.73m)

**Beam:** 17' 0" (5.18m)

**Min Draft:** 5' 2" (1.57m)

## Speed, Capacities and Weight

---

**Cruise Speed:** 32 Kts. (37 MPH)

**Max Speed:** 38 Kts. (44 MPH)

**Displacement:** 72500 Pounds

**Water Capacity:** 251 Gallons

**Holding Tank:** 88 Gallons

**Fuel Capacity:** 845 Gallons

## Accommodations

---

**Total Cabins:** 3

**Sleeps:** 6

**Total Heads:** 3

---

## Hull and Deck Information

---

**Hull Material:** Fiberglass

**Hull Configuration:** Modified V-Hull

**Hull Color:** Burgundy

**Hull Designer:** Stefano Righini

---

## Engine Information

---

**Engines:** 2

**Manufacturer:** MAN

**Model:** V12

**Engine Type:** Inboard

---

# DETAILED INFORMATION

---

## Vessel Walkthrough

---

Besides its stunning profile and good looks, the 68 S Azimut is a very agile and a great running boat. The three stateroom/3 head layout gives plenty of comfort below and a luxurious entertaining area above deck. The upper deck is complete with lounges to port and starboard, pop up TV, Bose surround sound, retractable roof, and a fun aft deck!

## Vessel Highlights

---

MAN 1360 HP Common Rail diesel engines - 250 hours

Kohler diesel 20 kW generator - 865 hours

Retractable roof and aft cover

Remote docking system

Side Power bow & stern thruster

Garage for 10' tender

Lifting platform

Automation system

Village Marine water maker

KVH SAT TV w/ 4 receivers

3 staterooms/ 3 heads

## Cabin

---

Four steps down to companionway to all staterooms and day head

Splendide Combo-matic washer/dryer

Designer light switches

Upholstered side panels

Wenge wood finish throughout

Designer beige carpet

Cruisair digital a/c controls

---

## Galley

---

Entrance to galley to starboard of upper deck

Sliding door to galley and four steps down

Courtesy lights in steps

Franke dual side by side circular SS sinks w/ flexible sink handle

Garbage disposal

Exhaust fan

Dae Woo microwave oven

Trash receptacle

Above counter storage

Storage drawers

Wenge wood finish & SS finish throughout

Electrical panel

Water maker remote auto flush panel

Schott Ceran four burner cook top

Cutlery /dishware & glassware

Storage under stairs

Overhead lighting

SS port hole

120V outlets

Refrigerator/freezer

---

## Master Stateroom/ Aft

---

Queen island bed w/ designer bedding & pillows

Drawer storage under bed

Designer headboard

Overhead lighting on port and starboard enclave

Port holes

Sony 32" flat screen TV w/ SAT TV

Denon stereo receiver w/ speakers & SAT TV receiver

LG Blu Ray player

120 V outlets

Reading lights

Contemporary dinette w/ leather seating

Large hull side windows

Clothes closet

MX3000 automation system

Cruisair A/C digital controls

A/C vents

Wenge wood finish throughout

Additional closet

Designer beige carpet

En-suite head

---

## Master Head

---



Tecma electric toilet w/ push button flush

Glass vanity sink w/ chrome finish faucet

Wenge wood finish throughout

SS port hole

Designer roll up blinds

Drawer storage above toilet

Mirror

Designer towel rack below sink

Overhead lighting

Exhaust fan

120 V outlet

Stall shower w/ chrome finish faucet

Glass shower door w/ European hardware

---

## VIP Stateroom/Forward

---

Queen centerline island bed

Designer bedding & pillows

Overhead lighting on port & starboard enclave

Reading lights

120 V outlets

SS port holes

Designer blinds

Beige carpet

Drawer storage under bed

Hanging locker to port

LG 20" flat screen TV w SAT TV receiver

Padded bed trim w/ pocket storage

Cruisair digital controls and a/c vents

Overhead hatch w/ screen and shade

En-suite head

---

## VIP Head

---

Glass sink w/ designer chrome faucet

Tecma electric toilet with push button flush

Mirror

Storage above port hole

Port hole

Push button flush toilet

120V outlet

Wenge wood finish throughout

Circular shower

---

## Guest Stateroom/Amidship/Port

---

Twin side by side berths w/ designer bedding & pillows

Wenge wood finish throughout

Drawer storage under beds

Overhead lighting

Designer roll up blinds

Hanging closet

120V outlet

Designer beige carpet

LG 20" flat screen TV w/ SAT TV receiver

A/C vent

Port hole

Overhead lights

En-suite head

---

## Guest Head

---

Glass sink w/ designer chrome faucet

Tecma electric toilet with push button flush

Mirror

Storage above port hole

Port hole

Towel racks

120V outlet

Wenge wood finish throughout

Circular shower

---

## Crew Quarters

---

Entrance through aft deck aft port side

Single berth w/ storage below

Tecma electric toilet w/ push button flush

Pull curtain for shower

Sink w/ shower nozzle

Sea Fire carbon monoxide alert

Cruisair a/c with digital controls

120V outlets

Reading light

Overhead light

---

## Upper Helm Deck

---

SS Aft glass doors

Bose stereo system

Bose surround sound speakers

Sony 32" pop up flat screen TV w/ SAT TV receiver

Pop up TV that is also a table

Wenge wood finish throughout

Settee to starboard

Wenge wood floors

Settee to port w/ 2 ottomans & throw pillows

Single chair behind double helm seat

Helm area

Berber overlay carpet on walnut

Cruisair digital a/c controls

A/C vents

Glass counter w/ storage below

Storage drawers

Overhead lighting

120V outlets

MX3000 automation system

Deluxe dual leather helm chairs

Retractable roof

---

## Helm

---

Treden deluxe single leather helm seat w/ bolster and push button comfort switches

Deluxe dual passenger leather helm seat

Storage below helm seat

Wenge wood floor

Retractable roof

Port & starboard sliding up and down windows

Side Power bow & stern thruster

Docking master

Electronics package

VDO gauges

VDO water and fuel gauges

Deluxe leather wrapped steering wheel

Tilt Wheel

MAN dual shifters

Quick windlass remote & chain counter

Sea Energy controls for thrusters and engines

Ritchie 4" compass

A/C vent

Overhead lights

Drink holders

Raymarine speaker

Heavy duty windshield

MAN engine monitors

Toggle switches

ITT Jabsco spotlight remote

Trim tab indicators

Windshield wipers & washers

Glove box

---

## Electronics

---

Raymarine E80 Radar w/ Dome

Raymarine ST6002 autopilot

Raymarine ST 60+ Tridata system (depth/speed/temp)

Raymarine Ray 240 VHF radio

KVH TracVision 5 SAT TV w/ 4 receivers

---

## Aft deck

---

Teak deck

Large sun pad w/ storage below and full cover

BBQ grill w/ Raritan icemaker and refrigerator below & sink w/ pressure water above

Fiberglass overhang which retracts

Courtesy lights

JL Audio overhead speakers

---

Settee to port outside large sliding doors

Tall teak table w/ SS pedestal w/ folding leaves

Crews quarters to port

OpcaMare passerelle stored to starboard w/ remote

Three steps down to swim platform

Garage aft for 10' tender or PWC

Cablemaster outlets for shore cords (twin 50 amp)

Shower w/ hot & cold pressure water

Dockside water connection

SS grab rail to upper deck

Teak stern lifting platform

Courtesy lights on transom steps

Storage lockers on side

Swing door to swim platform

Side control panel above BBQ grill for lift/gen set remote start/passerelle/garage

Quick windlass & remote foot pedals for rope winches

Storage below Quick rope windlass

Fuel shut off valves in storage

Engine room access

Large SS cleats

## Hull and Deck

---

Burgundy hull color w/white top sides

Black bottom paint

Fiberglass hardtop w/ retractable roof and aft deck

Side navigation lights

Teak side decks

Quick windlass w/ anchor locker and foot pedals

Fiberglass arch for SAT TV dome/radar dome/antennas

Air horn

Forward sun pad w/ cup holders to side w/ cover

SS grab rail next to sun pad

Lifting platform aft

Windshield wipers & washers

Window covers

Overhead hatch

Fuel/water fill recessed on side decks

SS cleats

Master stateroom side windows

SS port holes

Hardtop vent hatch

Swim ladder on swim platform starboard side

Garage w/ wench for 10' tender

Opcra Mare passerelle

SS cleats

SS bow rail

Aquamet shafts

Nibral propellers

Razor style rudders



---

## Engine Room and Mechanical Equipment

---

Twin MAN 1360 HP CR diesel engines w/ 250 hours

Straight inboard propulsion

Kohler 21.0 kW diesel generator w/ 856 hours

ZF gears

Racor fuel clean system

Village Marine water maker

Side Power bow & stern thruster control box

Dolphin battery chargers

ACME transformer

Sea Star hydraulic steering

SS steps down to engine room

Access to engine room by aft deck

Halon system

Cruisair a/c compressors

Dripless shaft logs

Galvanic isolator

---

## Electrical System

---

Dual 50 amp shore cords

Dual cablemasters

Battery chargers

Batteries

12V/24V/120V/240V electrical system

## Exclusions

---

Owner's personal belongings.

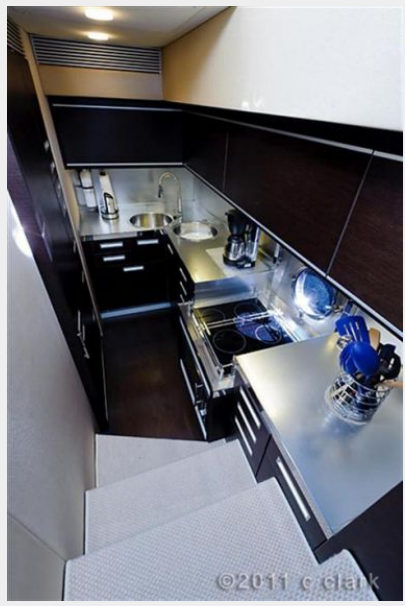
## Disclaimer

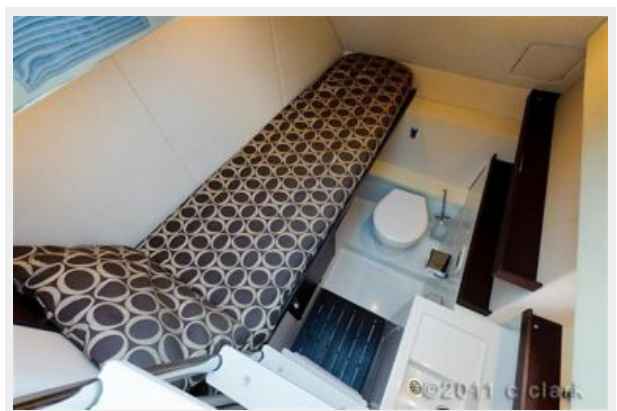
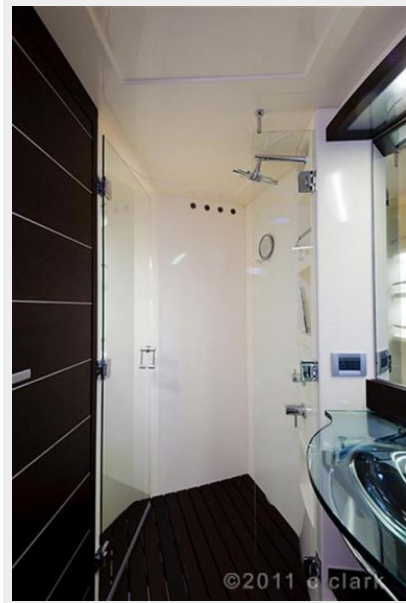
---

The Company offers the details of this vessel or yacht in good faith but cannot guarantee or warrant the accuracy of this information nor warrant the condition of the vessel. A buyer should instruct his representatives, agents, or his surveyors, to investigate such details as the buyer desires validated. This vessel or yacht is offered subject to prior sale, price change, or withdrawal without notice.

# PHOTOS















---

# CONTACTS

---

Andrey Shestakov, leading yacht broker of the sales department of Shestakov Yacht Sales Inc. Shestakov Yacht Sales Inc., the official representative of the Miami/Fort Lauderdale FL headquarters.

---

## Contact details

---

Email: [andrey@shestakovyachtsales.com](mailto:andrey@shestakovyachtsales.com)

Web: [shestakovyachtsales.com/en/](http://shestakovyachtsales.com/en/)

---

## Telephones

---

USA: +1(954)274-4435

---

## Office hours

---

Monday – Saturday: **9:00 - 21:00** EDT

Sunday: **closed**

---

## Address

---



Harbour Towne Marina, 850 NE 3rd St,  
STE 213, Dania, FL 33004