

## ASSA II — AZIMUT



**Судостроитель:** [AZIMUT](#)

**Год постройки:** 2008

**Модель:** Крейсер

**Цена:** **ЦЕНА ЯХТЫ ПО ЗАПРОСУ**

**Местонахождение:** United States

**Длина общая:** 68' 0" (20.73m)

**Ширина:** 17' 0" (5.18m)

**Мин. осадка:** 5' 2" (1.57m)

**Крейс. скорость:** 32 Kts. (37 MPH)

**Макс. скорость:** 38 Kts. (44 MPH)

Купить **ASSA II — AZIMUT** а также выбрать подходящую вам яхту из нашего каталога яхт вам поможет опытный яхтенный брокер Андрей Шестаков. На сегодняшний день компания **Shestakov Yacht Sales Inc.** имеет большое количество яхт в собственном списке продаж, а также тесно сотрудничает со всеми крупными яхтенными производителями по всему миру.

Для того чтобы купить яхту **ASSA II — AZIMUT** а также проконсультироваться по любому вопросу связанному с покупкой, продажей, чартером яхт позвоните по телефону **+7(918)465-66-44**.

# ОГЛАВЛЕНИЕ

ОГЛАВЛЕНИЕ	2
ХАРАКТЕРИСТИКИ	4
Обзор	4
Основная информация	4
Размеры	4
Скорость, вместимость и масса	4
Размещение	4
Корпус и палуба	5
Информация о двигателе	5
ПОДРОБНОЕ ОПИСАНИЕ	6
Vessel Walkthrough	6
Vessel Highlights	6
Cabin	6
Galley	7
Master Stateroom/ Aft	8
Master Head	8
VIP Stateroom/Forward	9
VIP Head	10
Guest Stateroom/Amidship/Port	10
Guest Head	11
Crew Quarters	11
Upper Helm Deck	12
Helm	13
Electronics	14
Aft deck	14
Hull and Deck	15
Engine Room and Mechanical Equipment	17
Electrical System	17

---

Исключения	18
Отказ от ответственности	18
ФОТОГРАФИИ	19
КОНТАКТЫ	25
Контактная информация	25
Телефоны	25
Время работы	25
Адрес	25

# ХАРАКТЕРИСТИКИ

## Обзор

Besides its stunning profile and good looks, the 68 S Azimut is a very agile and a great running boat. The three stateroom/three head layout gives plenty of comfort below and a luxurious entertaining area above deck. The upper deck is complete with lounges to port and starboard, pop up TV, Bose surround sound, retractable roof, and a fun aft deck!

## Основная информация

<b>Тип судна:</b> Крейсер	<b>Подкатегория:</b> Express
<b>Модельный год:</b> 2008	<b>Год постройки:</b> 2008
<b>Страна:</b> United States	<b>Кубрик:</b> Да

## Размеры

<b>Длина общая:</b> 68' 0" (20.73m)	<b>Ширина:</b> 17' 0" (5.18m)
<b>Мин. осадка:</b> 5' 2" (1.57m)	

## Скорость, вместимость и масса

<b>Крейс. скорость:</b> 32 Kts. (37 MPH)	<b>Макс. скорость:</b> 38 Kts. (44 MPH)
<b>Водоизмещение:</b> 72500 Pounds	<b>Вместимость воды:</b> 251 Gallons
<b>Вместимость сточного бака:</b> 88 Gallons	<b>Объем топливного бака:</b> 845 Gallons

## Размещение

<b>Всего кают:</b> 3	<b>Спальные места:</b> 6
<b>Всего ком. состава:</b> 3	

## Корпус и палуба

---

**Материал корпуса:** Fiberglass

**Комплектация корпуса:** Modified V-Hull

**Цвет корпуса:** Burgundy

**Дизайнер корпуса:** Stefano Righini

## Информация о двигателе

---

**Двигатели:** 2

**Производитель:** MAN

**Модель:** V12

**Тип двигателя:** Inboard

---

# ПОДРОБНОЕ ОПИСАНИЕ

---

## Vessel Walkthrough

---

Besides its stunning profile and good looks, the 68 S Azimut is a very agile and a great running boat. The three stateroom/3 head layout gives plenty of comfort below and a luxurious entertaining area above deck. The upper deck is complete with lounges to port and starboard, pop up TV, Bose surround sound, retractable roof, and a fun aft deck!

## Vessel Highlights

---

MAN 1360 HP Common Rail diesel engines - 250 hours

Kohler diesel 20 kW generator - 865 hours

Retractable roof and aft cover

Remote docking system

Side Power bow & stern thruster

Garage for 10' tender

Lifting platform

Automation system

Village Marine water maker

KVH SAT TV w/ 4 receivers

3 staterooms/ 3 heads

## Cabin

---

Four steps down to companionway to all staterooms and day head

Splendide Combo-matic washer/dryer

Designer light switches

Upholstered side panels

Wenge wood finish throughout

Designer beige carpet

Cruisair digital a/c controls

---

## Galley

---

Entrance to galley to starboard of upper deck

Sliding door to galley and four steps down

Courtesy lights in steps

Franke dual side by side circular SS sinks w/ flexible sink handle

Garbage disposal

Exhaust fan

Dae Woo microwave oven

Trash receptacle

Above counter storage

Storage drawers

Wenge wood finish & SS finish throughout

Electrical panel

Water maker remote auto flush panel

Schott Ceran four burner cook top

Cutlery /dishware & glassware

Storage under stairs

Overhead lighting

SS port hole

120V outlets

Refrigerator/freezer

---

## Master Stateroom/ Aft

---

Queen island bed w/ designer bedding & pillows

Drawer storage under bed

Designer headboard

Overhead lighting on port and starboard enclave

Port holes

Sony 32" flat screen TV w/ SAT TV

Denon stereo receiver w/ speakers & SAT TV receiver

LG Blu Ray player

120 V outlets

Reading lights

Contemporary dinette w/ leather seating

Large hull side windows

Clothes closet

MX3000 automation system

Cruisair A/C digital controls

A/C vents

Wenge wood finish throughout

Additional closet

Designer beige carpet

En-suite head

---

## Master Head

---



Tecma electric toilet w/ push button flush

Glass vanity sink w/ chrome finish faucet

Wenge wood finish throughout

SS port hole

Designer roll up blinds

Drawer storage above toilet

Mirror

Designer towel rack below sink

Overhead lighting

Exhaust fan

120 V outlet

Stall shower w/ chrome finish faucet

Glass shower door w/ European hardware

---

## VIP Stateroom/Forward

---

Queen centerline island bed

Designer bedding & pillows

Overhead lighting on port & starboard enclave

Reading lights

120 V outlets

SS port holes

Designer blinds

Beige carpet

Drawer storage under bed

Hanging locker to port

LG 20" flat screen TV w SAT TV receiver

Padded bed trim w/ pocket storage

Cruisair digital controls and a/c vents

Overhead hatch w/ screen and shade

En-suite head

## **VIP Head**

---

Glass sink w/ designer chrome faucet

Tecma electric toilet with push button flush

Mirror

Storage above port hole

Port hole

Push button flush toilet

120V outlet

Wenge wood finish throughout

Circular shower

## **Guest Stateroom/Amidship/Port**

---

Twin side by side berths w/ designer bedding & pillows

Wenge wood finish throughout

Drawer storage under beds

Overhead lighting

Designer roll up blinds

Hanging closet

120V outlet

Designer beige carpet

LG 20" flat screen TV w/ SAT TV receiver

A/C vent

Port hole

Overhead lights

En-suite head

---

## Guest Head

---

Glass sink w/ designer chrome faucet

Tecma electric toilet with push button flush

Mirror

Storage above port hole

Port hole

Towel racks

120V outlet

Wenge wood finish throughout

Circular shower

---

## Crew Quarters

---

Entrance through aft deck aft port side

Single berth w/ storage below

Tecma electric toilet w/ push button flush

Pull curtain for shower

Sink w/ shower nozzle

Sea Fire carbon monoxide alert

Cruisair a/c with digital controls

120V outlets

Reading light

Overhead light

## Upper Helm Deck

---

SS Aft glass doors

Bose stereo system

Bose surround sound speakers

Sony 32" pop up flat screen TV w/ SAT TV receiver

Pop up TV that is also a table

Wenge wood finish throughout

Settee to starboard

Wenge wood floors

Settee to port w/ 2 ottomans & throw pillows

Single chair behind double helm seat

Helm area

Berber overlay carpet on walnut

Cruisair digital a/c controls

A/C vents

Glass counter w/ storage below

Storage drawers

Overhead lighting

120V outlets

MX3000 automation system

Deluxe dual leather helm chairs

Retractable roof

---

## Helm

---

Treden deluxe single leather helm seat w/ bolster and push button comfort switches

Deluxe dual passenger leather helm seat

Storage below helm seat

Wenge wood floor

Retractable roof

Port & starboard sliding up and down windows

Side Power bow & stern thruster

Docking master

Electronics package

VDO gauges

VDO water and fuel gauges

Deluxe leather wrapped steering wheel

Tilt Wheel

MAN dual shifters

Quick windlass remote & chain counter

Sea Energy controls for thrusters and engines

Ritchie 4" compass

A/C vent

Overhead lights

Drink holders

Raymarine speaker

Heavy duty windshield

MAN engine monitors

Toggle switches

ITT Jabsco spotlight remote

Trim tab indicators

Windshield wipers & washers

Glove box

---

## Electronics

---

Raymarine E80 Radar w/ Dome

Raymarine ST6002 autopilot

Raymarine ST 60+ Tridata system (depth/speed/temp)

Raymarine Ray 240 VHF radio

KVH TracVision 5 SAT TV w/ 4 receivers

---

## Aft deck

---

Teak deck

Large sun pad w/ storage below and full cover

BBQ grill w/ Raritan icemaker and refrigerator below & sink w/ pressure water above

Fiberglass overhang which retracts

Courtesy lights

JL Audio overhead speakers

Settee to port outside large sliding doors

Tall teak table w/ SS pedestal w/ folding leaves

Crews quarters to port

OpcaMare passerelle stored to starboard w/ remote

Three steps down to swim platform

Garage aft for 10' tender or PWC

Cablemaster outlets for shore cords (twin 50 amp)

Shower w/ hot & cold pressure water

Dockside water connection

SS grab rail to upper deck

Teak stern lifting platform

Courtesy lights on transom steps

Storage lockers on side

Swing door to swim platform

Side control panel above BBQ grill for lift/gen set remote start/passerelle/garage

Quick windlass & remote foot pedals for rope winches

Storage below Quick rope windlass

Fuel shut off valves in storage

Engine room access

Large SS cleats

---

## Hull and Deck

---

Burgundy hull color w/white top sides

Black bottom paint

Fiberglass hardtop w/ retractable roof and aft deck

Side navigation lights

Teak side decks

Quick windlass w/ anchor locker and foot pedals

Fiberglass arch for SAT TV dome/radar dome/antennas

Air horn

Forward sun pad w/ cup holders to side w/ cover

SS grab rail next to sun pad

Lifting platform aft

Windshield wipers & washers

Window covers

Overhead hatch

Fuel/water fill recessed on side decks

SS cleats

Master stateroom side windows

SS port holes

Hardtop vent hatch

Swim ladder on swim platform starboard side

Garage w/ wench for 10' tender

Opca Mare passerelle

SS cleats

SS bow rail

Aquamet shafts

Nibral propellers

Razor style rudders



---

## Engine Room and Mechanical Equipment

---

Twin MAN 1360 HP CR diesel engines w/ 250 hours

Straight inboard propulsion

Kohler 21.0 kW diesel generator w/ 856 hours

ZF gears

Racor fuel clean system

Village Marine water maker

Side Power bow & stern thruster control box

Dolphin battery chargers

ACME transformer

Sea Star hydraulic steering

SS steps down to engine room

Access to engine room by aft deck

Halon system

Cruisair a/c compressors

Dripless shaft logs

Galvanic isolator

---

## Electrical System

---

Dual 50 amp shore cords

Dual cablemasters

Battery chargers

Batteries

12V/24V/120V/240V electrical system

## Исключения

---

При продаже яхты исключаются личные вещи владельца.

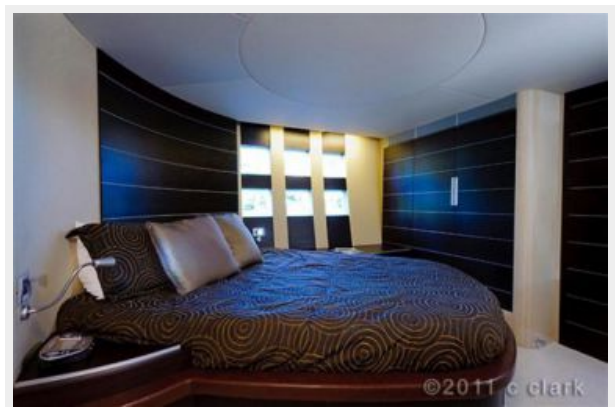
## Отказ от ответственности

---

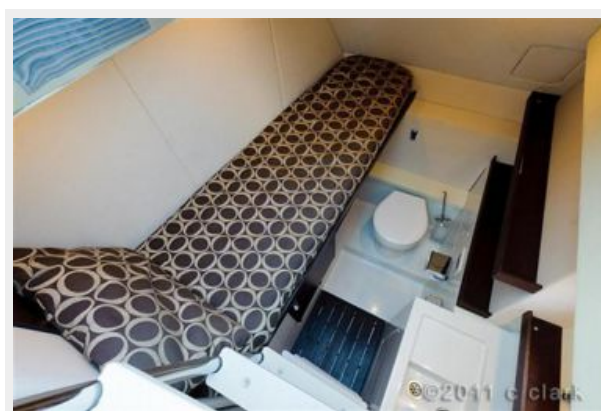
Компания предоставляет описание судна или яхты добросовестно, но не может гарантировать точность этой информации, а также не ручается за техническое состояние. Покупатель должен проинструктировать своих агентов или оценщиков исследовать представленную информацию более подробно, по собственному желанию. Продажа судна или яхты, изменение цены или снятие с продажи будет происходить без предварительного уведомления.

# ФОТОГРАФИИ



















# КОНТАКТЫ

---

Андрей Шестаков (Andrey Shestakov) – ведущий яхтенный брокер отдела продаж яхт и судов компании Shestakov Yacht Sales Inc. Официальный представитель Shestakov Yacht Sales Inc. для русскоговорящих клиентов в центральном офисе компании в Майами/Форт Лодердейл/Флорида/США.

## Контактная информация

---

Email: [andrey@shestakovyachtsales.com](mailto:andrey@shestakovyachtsales.com)

Web: [shestakovyachtsales.com](http://shestakovyachtsales.com)

## Телефоны

---

Краснодарский край: **+7(918)465-66-44**

США, Майами, Флорида: **+1(954)274-4435**

## Время работы

---

Понедельник – Суббота: **9:00 - 21:00**  
EDT

Воскресенье: **Закрето**

## Адрес

---



Harbour Towne Marina, 850 NE 3rd St,  
STE 213, Dania, FL 33004