

## JO RAY ME — SEA RAY



**Builder:** SEA RAY

**LOA:** 52' 0" (15.85m)

**Year Built:** 2009

**Beam:** 15' 3" (4.65m)

**Model:** Cruiser

**Price:** PRICE ON APPLICATION

**Location:** United States

Our experienced yacht broker, Andrey Shestakov, will help you choose and buy a yacht that best suits your needs **Jo Ray Me — SEA RAY** from our catalogue. Presently, at Shestakov Yacht Sales Inc., we have a wide variety of yachts available on our sale's list. We also work in close contact with all the big yacht manufacturers from all over the world.

If you would like to buy a yacht **Jo Ray Me — SEA RAY** or would like help answering any questions concerning purchasing, selling or chartering a yacht, please call **+1(954)274-4435**

---

# TABLE OF CONTENTS

---

|                                       |    |
|---------------------------------------|----|
| TABLE OF CONTENTS                     | 2  |
| SPECIFICATIONS                        | 4  |
| Basic Information                     | 4  |
| Dimensions                            | 4  |
| Speed, Capacities and Weight          | 4  |
| Accommodations                        | 4  |
| Hull and Deck Information             | 4  |
| Engine Information                    | 4  |
| DETAILED INFORMATION                  | 5  |
| Introduction                          | 5  |
| Vessel Walkthrough                    | 5  |
| Main Salon                            | 6  |
| Galley                                | 7  |
| Master Stateroom                      | 7  |
| Master Head                           | 7  |
| Guest Stateroom                       | 7  |
| Guest Head / Shower                   | 8  |
| General Cabin Features                | 8  |
| Hull & Deck Features                  | 8  |
| Cockpit                               | 8  |
| Electronics & Helm                    | 9  |
| Electrical                            | 9  |
| Engine Details & Mechanical Equipment | 10 |
| Other                                 | 10 |
| Exclusions                            | 10 |
| Disclaimer                            | 10 |
| PHOTOS                                | 11 |
| CONTACTS                              | 14 |

---

|                 |    |
|-----------------|----|
| Contact details | 14 |
| Telephones      | 14 |
| Office hours    | 14 |
| Address         | 14 |

---

# SPECIFICATIONS

---

## Basic Information

---

**Category:** Cruiser

**Model Year:** 2009

**Year Built:** 2009

**Country:** United States

**Cockpit:** Yes

## Dimensions

---

**LOA:** 52' 0" (15.85m)

**Beam:** 15' 3" (4.65m)

## Speed, Capacities and Weight

---

**Displacement:** 40100 Pounds

**Water Capacity:** 150 Gallons

**Fuel Capacity:** 560 Gallons

## Accommodations

---

**Total Cabins:** 3

## Hull and Deck Information

---

**Hull Material:** Fiberglass

## Engine Information

---

**Engines:** 2

**Manufacturer:** Cummins

**Model:** QSM-11

**Engine Type:** Inboard

**Fuel Type:** Diesel

---

# DETAILED INFORMATION

---

---

## Introduction

---

***Passport Premier Warranties!!***

***SAT TV / Underwater Lights!!***

***Hydraulic Lift + 2010 AB***

***Dinghy + 40 HP Yamaha!!***

***Recent Service, Excellent Condition!!***

---

## Vessel Walkthrough

---

Come take a closer look at one of Sea Ray's smoothest riding boats ever made, the 2009 Sea Ray 52 Sundancer. This hull matched with the reliable best in their class Cummins QSM-11 engines, Sea Ray Quality and State of the Art Electronics Systems gives you one Great Yacht! She is perfect for those extended stays in the Bahamas, weekends in the Keys, or just your evening cocktail cruise with her versatile and spacious layout.

Boarding the vessel can be done either from the huge hydraulic swim platform on the stern or the gunnels with molded fiberglass steps on the port and starboard sides of the cockpit. The hydraulic swim platform is equipped with chocks for a dinghy and is large enough for a fiberglass Boston Whaler tender.

The cockpit of this yacht is very spacious and contains plenty of seating for all of your guests. There are a number of comforts here that make this focal area perfect for entertaining. Air Conditioning, Carpeted Flooring, Teak Cocktail Table, Refrigerator, Ice maker, Wet Bar, TV with Satellite Link-Up, Trash Receptacle and Fiberglass Hardtop are all included.

The helm area has a unique versatile seating arrangement that allows the companion bench seat to swivel and convert into a sun lounger. The Captain's chair is made in a custom euro style with flip-up thigh rise bolster, armrests and slide/swivel/pneumatic vertical adjustment. Bottom Line,

you have a feeling of complete control and comfort when piloting the boat, all the electronics you could want are just an arms length away.

Stepping down the teak steps into the salon, you are greeted by a high gloss cherry cabinetry, fine leather sofas and luxurious Sea Ray appointments. One noteworthy upgrade for this recent model year is the Xenon low voltage overhead lighting throughout, which are brighter, last much longer and do not give off heat like the older halogen lights. The salon is appointed with two fine ultra leather sofas (one with pull out bed), burl wood hi/lo dinette table, two stowable seats/footrests, 32" flatscreen HDTV, Bose surround sound system, six large windows and plenty of storage. The large windows to port and starboard bring in a good deal of natural light and brighten up the entire area.

Moving forward the galley is situated to starboard and is equipped with wood flooring, overhead skylight, very spacious counter top, Grohe stainless steel faucet and sink, under counter stainless steel refrigerator and freezer units, stove, convection oven, trash receptacle and tons of storage. The way the galley is laid out in one line along the starboard side as opposed to the U-shaped layout in comparable vessels, you are given much more space to cook and prepare your favorite dishes.

To port opposite the galley is the guest stateroom and head, which offer a comfortable private area for guests even on those long trips. The guest stateroom has bunk style layout, with a double bed below and twin bed above, flat screen TV, cedar lined closet and storage cabinets. The guest head has a private access via the guest stateroom as well as access through the salon. It is equipped with shower stall, vacu-flush head and vanity with sink, medicine cabinet and storage below.

The master stateroom forward is appointed with all the comforts that the owner of a Sea Ray yacht should come to expect. Queen-Size island style innerspring mattress, full entertainment center with its own sat TV receiver, cedar lined hanging lockers port and starboard, vanity and plenty of storage. The rich light cherry cabinetry and the overhead hatch provide a light and comfortable feel. The master head is very spacious and includes walk-in shower with seat and adjustable wand, tile flooring, vacu-flush head and large vanity with extra countertop space, medicine cabinet, sink and storage below.

---

## Main Salon

---

BoseR Lifestyle 48, 5.1-Channel Home Theater System Bose Media Center (Interfaced

w/SiriusR Satellite Receiver), 4 Jewel Cube Speakers, Horizontal Center Channel Speaker & Acoustimass Module Storage Cabinet - CD & DVD TV, 32" Flatscreen LCD HDTV RTI-T3 Universal Remote Control Mirrors, Wall Accent Seating, Sofa (Ultraleather HP?) w/Pullout Bed - Starboard Seating, Sofa (Ultraleather HP) w/Storage Below - Aft Steps, Entryway - Teak w/Stainless- Steel Handrail Storage, Gunwale Cabinets Table, Dining (Movable) Hi-Lo w/High-Gloss Wood Surface & Stools w/Storage Below.

---

## Galley

---

Coffeemaker, 120V Countertop, Solid Surface w/Stainless- Steel Sink, Single-Lever GroheR Faucet w/Pullout Spray Head & Solid- Surface Sink Cover Freezer, Under-Counter w/Stainless-Steel Front - 120V Microwave/Convection Oven w/Stainless- Steel Face - 120V Power Vent, 12V Refrigerator, Under-Counter w/Stainless-Steel Front - 120V Storage, Drawers w/Cutlery Insert Storage, Upper, Mid & Lower w/Designated Plate & Glass Storage Stove, Two-Burner (Recessed) w/Solid- Surface Cover - 240V Trash Receptacle Flooring, Wood - Galley UPGRADE.

---

## Master Stateroom

---

Bed, Queen-Size Island-Style w/Innerspring Mattress, Pillows, Sheets, Coordinated Spread, Drawers & Storage Below Bose Lifestyle 3-2-1, 2.1-Channel Home Entertainment System Bose Media Center TV, 20" Flatscreen LCD Hanging Locker, Cedar-Lined w/Light, Shelf & Mirrored Door - Starboard Hanging Locker, Cedar-Lined w/Mirrored Door - Port Mirrored Rope Locker Bulkhead Storage, Gunwale Cabinets Vanity w/Storage Below - Port Personal Satellite TV Receiver UPGRADE.

---

## Master Head

---

Bath Accessories - Towel Rings (2), Bathroom Tissue Holder & Soap Dish Flooring, Tile Handrails, Stainless Steel Head (VacuFlushR) - Electric Power Vent, 12V Robe Hook, Head Door Shower w/Seat, Adjustable Shower Wand & Acrylic Door Storage, Medicine Cabinet - Mirrored Vanity w/Solid-Surface Countertop, Stainless-Steel Sink w/GroheR Faucet & Storage Below.

---

## Guest Stateroom

---

Beds, Upper & Lower Bunks w/Mattresses, Pillows, Sheets, Coordinated Spreads & Carpeted Storage Below (Lower Bunk) Hanging Locker w/Light Storage Cabinets - Fwd.Wall Storage, Gunwale Shelves

---

## Guest Head / Shower

---

Bath Accessories - Towel Bar, Bathroom Tissue Holder, Soap Dish & Robe Hook Flooring, Tile Handrails, Stainless Steel Head (VacuFlush) - Electric Power Vent, 12V Robe Hook, Head Door Shower w/Seat, Adjustable Shower Wand & Acrylic Door Storage, Medicine Cabinet - Mirrored Vanity w/Solid-Surface Countertop, Undermount Stainless-Steel Sink w/GroheRFaucet & Storage Below.

---

## General Cabin Features

---

Blinds, Wood Carbon Monoxide Monitors Carpet, MaslandR 55-Ounce 100% Stainmaster BCF Nylon w/DupontR Advanced Teflon Repel System Carpet Runners, Interior (SunbrellaR) Doors, High-Gloss Solid Wood Handrails, Stainless Steel Lighting, 12V Xenon Lighting, 12V Indirect Lighting, 120V Xenon (Low-Voltage AC) Outlets, 12V Accessory Outlets, 120V GFI Protected Outlets, Phone Outlet & Switch Plates - Satin Nickel Finish Pillows, Accent Storage, In-Floor Wood Interior Package, (High-Gloss Veneer) - Light Cherry Vacuum System, Central - 120V (BeamR) UPGRADE, Washer & Dryer UPGRADE

---

## Hull & Deck Features

---

Bow Rail, 316 Stainless Steel w/Welded Stanchions, Intermediate Rails & Life Lines Cleats, Custom Sea RayR Thru-Bolted Bollard Style - Stainless Steel (8) Deck Fill Plates, Stainless Steel Deck Rails, 316 Stainless Steel Gel Coat, Arctic White Graphics, Striping Handrails, 316 Stainless Steel Hatch, Deck Vent - Translucent w/Locks & Sky Screen Cover HullWindows, Stainless Steel - Fixed (6) Storage, Transom Wall (For Fenders & Gear) Stringer System, Fiberglass Hatman Swim Platform, Hydraulic Marine Lift w/Remote Windlass, All-Chain (In Lieu of Std. Rope/Chain) UPGRADE Windlass Capstan UPGRADE Lights, Navigation Portlights, Stainless Steel (6 Opening) Resin, High-Performance Vynylester Rub Rail, PVC w/Stainless-Steel Insert Skylights, Flush Mount w/Retractable Sunshades (2) (1 - Galley, 1 - Guest Stateroom)

---

## Cockpit

---

Beverage Holders (10) Carpet Liner, Snap-In Door, Cabin Entry (Lockable) – Acrylic Door, Transom – Acrylic Floor Liner, Self-Bailing Fiberglass w/Gas-Assisted Engine Room Service Hatch Handrails, 316 Stainless Steel Hardtop, Fiberglass w/Vent Hatch & Overhead Lighting w/Electronic Dimmer IceMaker, 120V Lighting, Indirect 12V Outlet, 12V Accessory Outlets, 120V GFI Protected Seating, Companion w/Swivel that Converts to Lounger w/Fiberglass Storage Base Refrigerator, Cockpit - (120V) UPGRADE Seating, Helm - Custom Euro-Style w/Flip-Up Thigh-Rise Bolster, Armrests & Heavy-Duty Pedestal w/Slide, Swivel & Pneumatic Vertical Adjustment Seating, L-Shaped Aft w/Fiberglass Storage Bases Steps, Boarding (Molded-In)



Stereo, ClarionR 12V AM/FM Single CD, SiriusR Satellite Receiver w/Antenna, MP3 Port, 6-Disc CD Changer, Amplifier, Subwoofer, Speakers (4) & Digital Cockpit Remote Control Storage Cabinet w/Solid-Surface Countertop & Trash Receptacle w/Trash Chute Wet Bar w/Sink, Faucet, Stainless- Steel Handrail & Storage Cabinet - Port Table, High-Gloss Teak w/Vinyl Cover - Cockpit UPGRADE Air Conditioning/Heating- Cockpit 24,000 BTU UPGRADE

## Electronics & Helm

She Comes Equipped With All The Latest Navigation Electronics! Compass Emergency Start System - Engines Horn, Air - 12V Instrument Panels - High-Gloss Shift & Throttle Controls - Electronic (Cummins ETS) SmartCraftR Diagnostics Instrumentation, Custom Sea RayR SmartCraft w/Low-Glare Blue Night Lighting & Chrome Bezels 4-in-1 Multigauges (2) (Includes: Fuel Level, Oil Pressure, Voltmeter & Water Temperature) Tachometers (2) SmartCraftR Vessel View Display Propulsion: Engine Hour Meters, Engine Status, Performance and Fuel, Peak Performance, Boost Pressure, Troll Control, Cruise Control Vessel: Vessel Status, Tank Status, Steering Position, Generator Data and Start/Stop Environment and Navigation: GPS Interface, Depth and Water Temperature, Depth Alerts, Trip Log Information, Fuel to Waypoint Data, Navigation Data Active Alarms/Details Alarm History/Details Spotlight w/Dual Halogen Bulbs Remote Controlled (ACRR) Steering, Power-Assisted w/Tilt Wheel Switch Panels, Backlit - High-Gloss Switches, Illuminated Weatherproof Rockers & Electronic Dimmer Control Systems Monitor, Digital LCD - for Pump Monitoring RaymarineR E120 - 12.1" Color LCD Radar/GPS/Chartplotter w/Integrated 4kW Open Array Scanner - Primary Display Sea Ray Navigator? III - 12.1" Sunlight-Viewable Touch-Screen Color LCD GPS/Chartplotter w/Water Temp & Depth Data - Auxiliary Display Autopilot, RaymarineR Raypilot ST 8002+ VHF Radio, Raymarine 240 w/Remote Speaker & 8' Fiberglass Antenna Electronics Circuit, 12V/50 Amp Bow Thruster, 24V UPGRADE Stereo, iPod Interface w/Docking Station UPGRADE

## Electrical

Batteries, (6) Group 31 w/holders Battery Charger/Converter, 120V/50 Amp/12V Battery Solenoid Switches, 12V (3) C-Phone System - Internal Station-to- Station Intercom w/Ship-to-Shore Ability From All Phone Outlets (w/Phone Shore Cord Plugged In) Cable Television System w/Inlet (Includes Phone Inlet & Phone Shore Cord), TV Shore Cord, Coax Outlets, Gain Control & Antenna Zone-Controlled Reverse-Cycle System, 240V (28,000 BTU) Custom Integral Vent System Washer/Dryer Combo, 120V UPGRADE Panel, Circuit Breaker - Remote Panel, DC Main Breaker Panel, Main Distribution - AC Panel, Main Distribution - DC Shore Power, Cablemaster (Glendenning) 240V/50 Amp w/75' Cord & Wireless Remote Transformer, Shore Power Isolation - 240V/50 Amp Wiring, Color-Coded w/Chafe Protection Air Conditioning/Heating - Cockpit (24,000 BTU) UPGRADE DSS Satellite TV System (HD) - Receivers in Salon & Master Stateroom UPGRADE Remote Control, RTI-T3 Universal - Unit for Master Stateroom UPGRADE

---

## Engine Details & Mechanical Equipment

---

Engines and Bilge Systems 2x VD-Cummins MerCruiser QSM-11 Diesel V-Drives (T-640 hp - 477 kW) w/ETS 13.5 kW OnanR - Diesel (120/240V/60 Cycle) w/Sound Shield, Remote Start, Muffler, Closed Cooling, Fuel Filter, Seacock & Seawater Strainer Bilge Pumps, 12V Automatic (2) Bilge Pumps, 12V Automatic High- Water (1 Bilge, 1 Cabin) Blowers, 12V Bilge (2) Engine Drip Sumps Exhaust, Power Pac/Lift System Mufflers Fire Suppression System - Automatic w/Diesel Shutdown, Override & Manual Pull Flooring, Fiberglass Diamond Plate Freshwater Cooling Gel-Coated Engine Room Insulation, Engine Room - 2" w/Loaded Vinyl Barrier Ladder, Stainless Steel - Removable Lighting, 12V Oil Changer System - Engines, Transmissions & Generator Crossover Fuel System (Generator Only) Fuel Filters (3) (RacorR) (2) 75- 900MAX (Dual) for Engines (1) Fuel Lines, USCG - Type A-1 Fuel Tanks, Aluminum w/Ultrasonic Sending Units & Manual Shutoff Valves Freshwater Washdown Spigots w/Hoses - Transom, Engine Room & Anchor Locker Pressure Water System w/12V Pump & Charcoal Filtration System Water Purifier System - Galley & IceMaker UPGRADE Shower, Cockpit - Hot & Cold Water Heater, 240V (20-Gallon) Water Manifold System Water Inlet, Dockside Central Drain System Head System (VacuFlushR) - Electric Holding Tank Level Indicators - MDP & Heads Holding Tank w/Dockside Pump-Out (68-Gallon) Sump Box w/Automatic Pump & Hinged Service Lid Bonding System w/Zinc Hull Plate Propeller Shafts, 2 1/2" Stainless Steel (2) -Aquamet 22 Propellers, Nibral 4-Blade Rudders, Manganese-Bronze w/Stainless-Steel Posts Seacocks on all Underwater Fittings Seawater Strainers Shaft Logs, Dripless w/Extra Seal Carrier Kit Struts, Manganese-Bronze Trim Tabs, Hydraulic

---

## Other

---

..

---

## Exclusions

---

Owner's personal belongings.

---

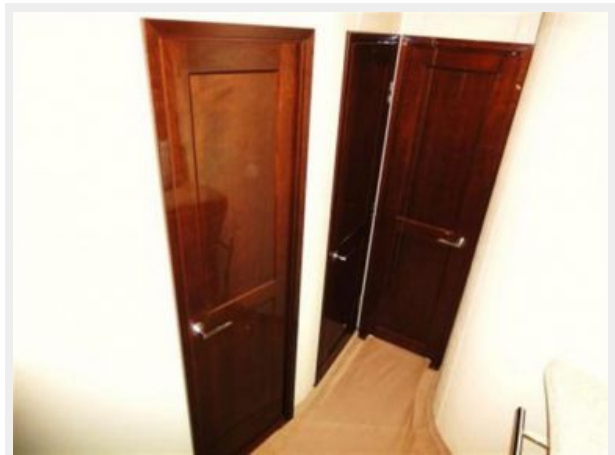
## Disclaimer

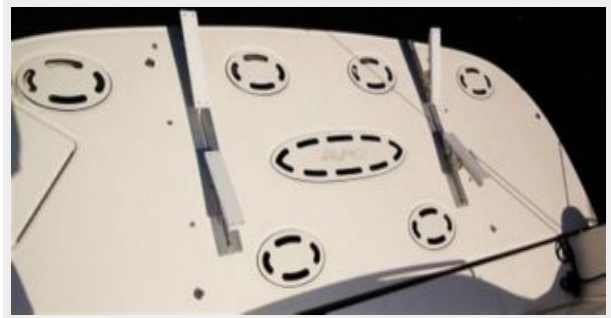
---

The Company offers the details of this vessel or yacht in good faith but cannot guarantee or warrant the accuracy of this information nor warrant the condition of the vessel. A buyer should instruct his representatives, agents, or his surveyors, to investigate such details as the buyer desires validated. This vessel or yacht is offered subject to prior sale, price change, or withdrawal without notice.

# PHOTOS







# CONTACTS

---

Andrey Shestakov, leading yacht broker of the sales department of Shestakov Yacht Sales Inc. Shestakov Yacht Sales Inc., the official representative of the Miami/Fort Lauderdale FL headquarters.

## Contact details

---

Email: [andrey@shestakovyachtsales.com](mailto:andrey@shestakovyachtsales.com)

Web: [shestakovyachtsales.com/en/](http://shestakovyachtsales.com/en/)

## Telephones

---

USA: +1(954)274-4435

## Office hours

---

Monday – Saturday: **9:00 - 21:00** EDT

Sunday: **closed**

## Address

---



Harbour Towne Marina, 850 NE 3rd St,  
STE 213, Dania, FL 33004