

JO RAY ME — SEA RAY



Судостроитель: SEA RAY

Длина общая: 52' 0" (15.85m)

Год постройки: 2009

Ширина: 15' 3" (4.65m)

Модель: Крейсер

Цена: ЦЕНА ЯХТЫ ПО ЗАПРОСУ

Местонахождение: United States

Купить Jo Ray Me — SEA RAY а также выбрать подходящую вам яхту из нашего каталога яхт вам поможет опытный яхтенный брокер Андрей Шестаков. На сегодняшний день компания Shestakov Yacht Sales Inc. имеет большое количество яхт в собственном списке продаж, а также тесно сотрудничает со всеми крупными яхтенными производителями по всему миру.

Для того чтобы купить яхту Jo Ray Me — SEA RAY а также проконсультироваться по любому вопросу связанному с покупкой, продажей, чартером яхт позвоните по телефону **+7(918)465-66-44**.

ОГЛАВЛЕНИЕ

| | |
|---------------------------------------|----|
| ОГЛАВЛЕНИЕ | 2 |
| ХАРАКТЕРИСТИКИ | 4 |
| Основная информация | 4 |
| Размеры | 4 |
| Скорость, вместимость и масса | 4 |
| Размещение | 4 |
| Корпус и палуба | 4 |
| Информация о двигателе | 4 |
| ПОДРОБНОЕ ОПИСАНИЕ | 5 |
| Introduction | 5 |
| Vessel Walkthrough | 5 |
| Main Salon | 6 |
| Galley | 7 |
| Master Stateroom | 7 |
| Master Head | 7 |
| Guest Stateroom | 7 |
| Guest Head / Shower | 8 |
| General Cabin Features | 8 |
| Hull & Deck Features | 8 |
| Cockpit | 8 |
| Electronics & Helm | 9 |
| Electrical | 9 |
| Engine Details & Mechanical Equipment | 10 |
| Other | 10 |
| Исключения | 10 |
| Отказ от ответственности | 10 |
| ФОТОГРАФИИ | 11 |
| КОНТАКТЫ | 14 |

| | |
|-----------------------|----|
| Контактная информация | 14 |
| Телефоны | 14 |
| Время работы | 14 |
| Адрес | 14 |

ХАРАКТЕРИСТИКИ

Основная информация

Тип судна: Крейсер

Модельный год: 2009

Год постройки: 2009

Страна: United States

Кубрик: Да

Размеры

Длина общая: 52' 0" (15.85m)

Ширина: 15' 3" (4.65m)

Скорость, вместимость и масса

Водоизмещение: 40100 Pounds

Вместимость воды: 150 Gallons

Объем топливного бака: 560 Gallons

Размещение

Всего кают: 3

Корпус и палуба

Материал корпуса: Fiberglass

Информация о двигателе

Двигатели: 2

Производитель: Cummins

Модель: QSM-11

Тип двигателя: Inboard

Тип топлива: Diesel

ПОДРОБНОЕ ОПИСАНИЕ

Introduction

Passport Premier Warranties!!

SAT TV / Underwater Lights!!

Hydraulic Lift + 2010 AB

Dinghy + 40 HP Yamaha!!

Recent Service, Excellent Condition!!

Vessel Walkthrough

Come take a closer look at one of Sea Ray's smoothest riding boats ever made, the 2009 Sea Ray 52 Sundancer. This hull matched with the reliable best in their class Cummins QSM-11 engines, Sea Ray Quality and State of the Art Electronics Systems gives you one Great Yacht! She is perfect for those extended stays in the Bahamas, weekends in the Keys, or just your evening cocktail cruise with her versatile and spacious layout.

Boarding the vessel can be done either from the huge hydraulic swim platform on the stern or the gunnels with molded fiberglass steps on the port and starboard sides of the cockpit. The hydraulic swim platform is equipped with chocks for a dinghy and is large enough for a fiberglass Boston Whaler tender.

The cockpit of this yacht is very spacious and contains plenty of seating for all of your guests. There are a number of comforts here that make this focal area perfect for entertaining. Air Conditioning, Carpeted Flooring, Teak Cocktail Table, Refrigerator, Icemaker, Wet Bar, TV with Satellite Link-Up, Trash Receptacle and Fiberglass Hardtop are all included.

The helm area has a unique versatile seating arrangement that allows the companion bench seat to swivel and convert into a sun lounger. The Captain's chair is made in a custom euro style with flip-up thigh rise bolster, armrests and slide/swivel/pneumatic vertical adjustment. Bottom Line,

you have a feeling of complete control and comfort when piloting the boat, all the electronics you could want are just an arms length away.

Stepping down the teak steps into the salon, you are greeted by a high gloss cherry cabinetry, fine leather sofas and luxurious Sea Ray appointments. One noteworthy upgrade for this recent model year is the Xenon low voltage overhead lighting throughout, which are brighter, last much longer and do not give off heat like the older halogen lights. The salon is appointed with two fine ultra leather sofas (one with pull out bed), burl wood hi/lo dinette table, two stowable seats/footrests, 32" flatscreen HDTV, Bose surround sound system, six large windows and plenty of storage. The large windows to port and starboard bring in a good deal of natural light and brighten up the entire area.

Moving forward the galley is situated to starboard and is equipped with wood flooring, overhead skylight, very spacious counter top, Grohe stainless steel faucet and sink, under counter stainless steel refrigerator and freezer units, stove, convection oven, trash receptacle and tons of storage. The way the galley is laid out in one line along the starboard side as opposed to the U-shaped layout in comparable vessels, you are given much more space to cook and prepare your favorite dishes.

To port opposite the galley is the guest stateroom and head, which offer a comfortable private area for guests even on those long trips. The guest stateroom has bunk style layout, with a double bed below and twin bed above, flat screen TV, cedar lined closet and storage cabinets. The guest head has a private access via the guest stateroom as well as access through the salon. It is equipped with shower stall, vacu-flush head and vanity with sink, medicine cabinet and storage below.

The master stateroom forward is appointed with all the comforts that the owner of a Sea Ray yacht should come to expect. Queen-Size island style innerspring mattress, full entertainment center with its own sat TV receiver, cedar lined hanging lockers port and starboard, vanity and plenty of storage. The rich light cherry cabinetry and the overhead hatch provide a light and comfortable feel. The master head is very spacious and includes walk-in shower with seat and adjustable wand, tile flooring, vacu-flush head and large vanity with extra countertop space, medicine cabinet, sink and storage below.

Main Salon

BoseR Lifestyle 48, 5.1-Channel Home Theater System Bose Media Center (Interfaced

w/SiriusR Satellite Receiver), 4 Jewel Cube Speakers, Horizontal Center Channel Speaker & Acoustimass Module Storage Cabinet - CD & DVD TV, 32" Flatscreen LCD HDTV RTI-T3 Universal Remote Control Mirrors, Wall Accent Seating, Sofa (Ultraleather HP?) w/Pullout Bed - Starboard Seating, Sofa (Ultraleather HP) w/Storage Below - Aft Steps, Entryway - Teak w/Stainless- Steel Handrail Storage, Gunwale Cabinets Table, Dining (Movable) Hi-Lo w/High-Gloss Wood Surface & Stools w/Storage Below.

Galley

Coffeemaker, 120V Countertop, Solid Surface w/Stainless- Steel Sink, Single-Lever GroheR Faucet w/Pullout Spray Head & Solid- Surface Sink Cover Freezer, Under-Counter w/Stainless-Steel Front - 120V Microwave/Convection Oven w/Stainless- Steel Face - 120V Power Vent, 12V Refrigerator, Under-Counter w/Stainless-Steel Front - 120V Storage, Drawers w/Cutlery Insert Storage, Upper, Mid & Lower w/Designated Plate & Glass Storage Stove, Two-Burner (Recessed) w/Solid- Surface Cover - 240V Trash Receptacle Flooring, Wood - Galley UPGRADE.

Master Stateroom

Bed, Queen-Size Island-Style w/Innerspring Mattress, Pillows, Sheets, Coordinated Spread, Drawers & Storage Below Bose Lifestyle 3-2-1, 2.1-Channel Home Entertainment System Bose Media Center TV, 20" Flatscreen LCD Hanging Locker, Cedar-Lined w/Light, Shelf & Mirrored Door - Starboard Hanging Locker, Cedar-Lined w/Mirrored Door - Port Mirrored Rope Locker Bulkhead Storage, Gunwale Cabinets Vanity w/Storage Below - Port Personal Satellite TV Receiver UPGRADE.

Master Head

Bath Accessories - Towel Rings (2), Bathroom Tissue Holder & Soap Dish Flooring, Tile Handrails, Stainless Steel Head (VacuFlushR) - Electric Power Vent, 12V Robe Hook, Head Door Shower w/Seat, Adjustable Shower Wand & Acrylic Door Storage, Medicine Cabinet - Mirrored Vanity w/Solid-Surface Countertop, Stainless-Steel Sink w/GroheR Faucet & Storage Below.

Guest Stateroom

Beds, Upper & Lower Bunks w/Mattresses, Pillows, Sheets, Coordinated Spreads & Carpeted Storage Below (Lower Bunk) Hanging Locker w/Light Storage Cabinets - Fwd.Wall Storage, Gunwale Shelves

Guest Head / Shower

Bath Accessories - Towel Bar, Bathroom Tissue Holder, Soap Dish & Robe Hook Flooring, Tile Handrails, Stainless Steel Head (VacuFlush) - Electric Power Vent, 12V Robe Hook, Head Door Shower w/Seat, Adjustable Shower Wand & Acrylic Door Storage, Medicine Cabinet - Mirrored Vanity w/Solid-Surface Countertop, Undermount Stainless-Steel Sink w/GroheRFaucet & Storage Below.

General Cabin Features

Blinds, Wood Carbon Monoxide Monitors Carpet, MaslandR 55-Ounce 100% Stainmaster BCF Nylon w/DupontR Advanced Teflon Repel System Carpet Runners, Interior (SunbrellaR) Doors, High-Gloss Solid Wood Handrails, Stainless Steel Lighting, 12V Xenon Lighting, 12V Indirect Lighting, 120V Xenon (Low-Voltage AC) Outlets, 12V Accessory Outlets, 120V GFI Protected Outlets, Phone Outlet & Switch Plates - Satin Nickel Finish Pillows, Accent Storage, In-Floor Wood Interior Package, (High-Gloss Veneer) - Light Cherry Vacuum System, Central - 120V (BeamR) UPGRADE, Washer & Dryer UPGRADE

Hull & Deck Features

Bow Rail, 316 Stainless Steel w/Welded Stanchions, Intermediate Rails & Life Lines Cleats, Custom Sea RayR Thru-Bolted Bollard Style - Stainless Steel (8) Deck Fill Plates, Stainless Steel Deck Rails, 316 Stainless Steel Gel Coat, Arctic White Graphics, Striping Handrails, 316 Stainless Steel Hatch, Deck Vent - Translucent w/Locks & Sky Screen Cover HullWindows, Stainless Steel - Fixed (6) Storage, Transom Wall (For Fenders & Gear) Stringer System, Fiberglass Hatman Swim Platform, Hydraulic Marine Lift w/Remote Windlass, All-Chain (In Lieu of Std. Rope/Chain) UPGRADE Windlass Capstan UPGRADE Lights, Navigation Portlights, Stainless Steel (6 Opening) Resin, High-Performance Vynylester Rub Rail, PVC w/Stainless-Steel Insert Skylights, Flush Mount w/Retractable Sunshades (2) (1 - Galley, 1 - Guest Stateroom)

Cockpit

Beverage Holders (10) Carpet Liner, Snap-In Door, Cabin Entry (Lockable) – Acrylic Door, Transom – Acrylic Floor Liner, Self-Bailing Fiberglass w/Gas-Assisted Engine Room Service Hatch Handrails, 316 Stainless Steel Hardtop, Fiberglass w/Vent Hatch & Overhead Lighting w/Electronic Dimmer Icemaker, 120V Lighting, Indirect 12V Outlet, 12V Accessory Outlets, 120V GFI Protected Seating, Companion w/Swivel that Converts to Lounger w/Fiberglass Storage Base Refrigerator, Cockpit - (120V) UPGRADE Seating, Helm - Custom Euro-Style w/Flip-Up Thigh-Rise Bolster, Armrests & Heavy-Duty Pedestal w/Slide, Swivel & Pneumatic Vertical Adjustment Seating, L-Shaped Aft w/Fiberglass Storage Bases Steps, Boarding (Molded-In)

Stereo, ClarionR 12V AM/FM Single CD, SiriusR Satellite Receiver w/Antenna, MP3 Port, 6-Disc CD Changer, Amplifier, Subwoofer, Speakers (4) & Digital Cockpit Remote Control Storage Cabinet w/Solid-Surface Countertop & Trash Receptacle w/Trash Chute Wet Bar w/Sink, Faucet, Stainless- Steel Handrail & Storage Cabinet - Port Table, High-Gloss Teak w/Vinyl Cover - Cockpit UPGRADE Air Conditioning/Heating- Cockpit 24,000 BTU UPGRADE

Electronics & Helm

She Comes Equipped With All The Latest Navigation Electronics! Compass Emergency Start System - Engines Horn, Air - 12V Instrument Panels - High-Gloss Shift & Throttle Controls - Electronic (Cummins ETS) SmartCraftR Diagnostics Instrumentation, Custom Sea RayR SmartCraft w/Low-Glare Blue Night Lighting & Chrome Bezels 4-in-1 Multigauges (2) (Includes: Fuel Level, Oil Pressure, Voltmeter & Water Temperature) Tachometers (2) SmartCraftR Vessel View Display Propulsion: Engine Hour Meters, Engine Status, Performance and Fuel, Peak Performance, Boost Pressure, Troll Control, Cruise Control Vessel: Vessel Status, Tank Status, Steering Position, Generator Data and Start/Stop Environment and Navigation: GPS Interface, Depth and Water Temperature, Depth Alerts, Trip Log Information, Fuel to Waypoint Data, Navigation Data Active Alarms/Details Alarm History/Details Spotlight w/Dual Halogen Bulbs Remote Controlled (ACRR) Steering, Power-Assisted w/Tilt Wheel Switch Panels, Backlit - High-Gloss Switches, Illuminated Weatherproof Rockers & Electronic Dimmer Control Systems Monitor, Digital LCD - for Pump Monitoring RaymarineR E120 - 12.1" Color LCD Radar/GPS/Chartplotter w/Integrated 4kW Open Array Scanner - Primary Display Sea Ray Navigator? III - 12.1" Sunlight-Viewable Touch-Screen Color LCD GPS/Chartplotter w/Water Temp & Depth Data - Auxiliary Display Autopilot, RaymarineR Raypilot ST 8002+ VHF Radio, Raymarine 240 w/Remote Speaker & 8' Fiberglass Antenna Electronics Circuit, 12V/50 Amp Bow Thruster, 24V UPGRADE Stereo, iPod Interface w/Docking Station UPGRADE

Electrical

Batteries, (6) Group 31 w/holders Battery Charger/Converter, 120V/50 Amp/12V Battery Solenoid Switches, 12V (3) C-Phone System - Internal Station-to- Station Intercom w/Ship-to-Shore Ability From All Phone Outlets (w/Phone Shore Cord Plugged In) Cable Television System w/Inlet (Includes Phone Inlet & Phone Shore Cord), TV Shore Cord, Coax Outlets, Gain Control & Antenna Zone-Controlled Reverse-Cycle System, 240V (28,000 BTU) Custom Integral Vent System Washer/Dryer Combo, 120V UPGRADE Panel, Circuit Breaker - Remote Panel, DC Main Breaker Panel, Main Distribution - AC Panel, Main Distribution - DC Shore Power, Cablemaster (Glendenning) 240V/50 Amp w/75' Cord & Wireless Remote Transformer, Shore Power Isolation - 240V/50 Amp Wiring, Color-Coded w/Chafe Protection Air Conditioning/Heating - Cockpit (24,000 BTU) UPGRADE DSS Satellite TV System (HD) - Receivers in Salon & Master Stateroom UPGRADE Remote Control, RTI-T3 Universal - Unit for Master Stateroom UPGRADE

Engine Details & Mechanical Equipment

Engines and Bilge Systems 2x VD-Cummins MerCruiser QSM-11 Diesel V-Drives (T-640 hp - 477 kW) w/ETS 13.5 kW OnanR - Diesel (120/240V/60 Cycle) w/Sound Shield, Remote Start, Muffler, Closed Cooling, Fuel Filter, Seacock & Seawater Strainer Bilge Pumps, 12V Automatic (2) Bilge Pumps, 12V Automatic High- Water (1 Bilge, 1 Cabin) Blowers, 12V Bilge (2) Engine Drip Sumps Exhaust, Power Pac/Lift System Mufflers Fire Suppression System - Automatic w/Diesel Shutdown, Override & Manual Pull Flooring, Fiberglass Diamond Plate Freshwater Cooling Gel-Coated Engine Room Insulation, Engine Room - 2" w/Loaded Vinyl Barrier Ladder, Stainless Steel - Removable Lighting, 12V Oil Changer System - Engines, Transmissions & Generator Crossover Fuel System (Generator Only) Fuel Filters (3) (RacorR) (2) 75- 900MAX (Dual) for Engines (1) Fuel Lines, USCG - Type A-1 Fuel Tanks, Aluminum w/Ultrasonic Sending Units & Manual Shutoff Valves Freshwater Washdown Spigots w/Hoses - Transom, Engine Room & Anchor Locker Pressure Water System w/12V Pump & Charcoal Filtration System Water Purifier System - Galley & IceMaker UPGRADE Shower, Cockpit - Hot & Cold Water Heater, 240V (20-Gallon) Water Manifold System Water Inlet, Dockside Central Drain System Head System (VacuFlushR) - Electric Holding Tank Level Indicators - MDP & Heads Holding Tank w/Dockside Pump-Out (68-Gallon) Sump Box w/Automatic Pump & Hinged Service Lid Bonding System w/Zinc Hull Plate Propeller Shafts, 2 1/2" Stainless Steel (2) -Aquamet 22 Propellers, Nibral 4-Blade Rudders, Manganese-Bronze w/Stainless-Steel Posts Seacocks on all Underwater Fittings Seawater Strainers Shaft Logs, Dripless w/Extra Seal Carrier Kit Struts, Manganese-Bronze Trim Tabs, Hydraulic

Other

..

Исключения

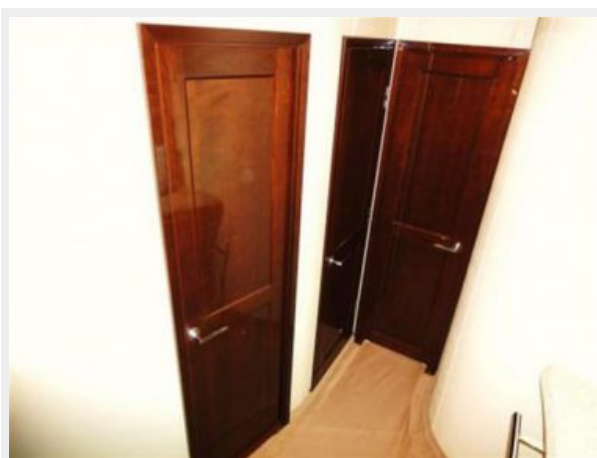
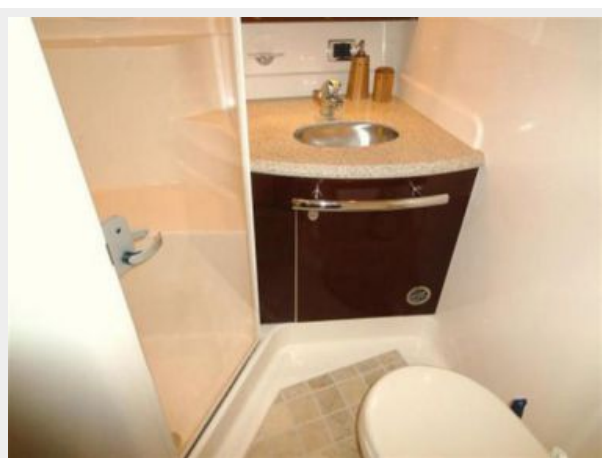
При продаже яхты исключаются личные вещи владельца.

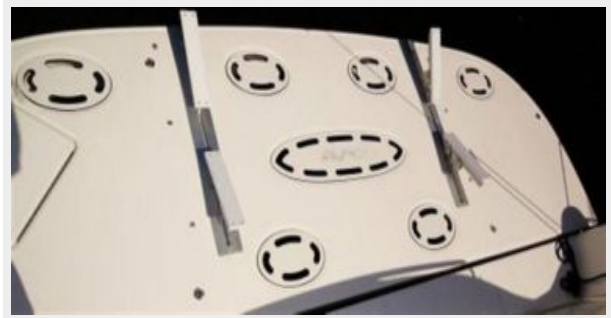
Отказ от ответственности

Компания предоставляет описание судна или яхты добросовестно, но не может гарантировать точность этой информации, а также не ручается за техническое состояние. Покупатель должен проинструктировать своих агентов или оценщиков исследовать представленную информацию более подробно, по собственному желанию. Продажа судна или яхты, изменение цены или снятие с продажи будет происходить без предварительного уведомления.

ФОТОГРАФИИ







КОНТАКТЫ

Андрей Шестаков (Andrey Shestakov) – ведущий яхтенный брокер отдела продаж яхт и судов компании Shestakov Yacht Sales Inc. Официальный представитель Shestakov Yacht Sales Inc. для русскоговорящих клиентов в центральном офисе компании в Майами/Форт Лодердейл/Флорида/США.

Контактная информация

Email: andrey@shestakovyachtsales.com

Web: shestakovyachtsales.com

Телефоны

Краснодарский край: **+7(918)465-66-44**

США, Майами, Флорида: **+1(954)274-4435**

Время работы

Понедельник – Суббота: **9:00 - 21:00**
EDT

Воскресенье: **Закрето**

Адрес



Harbour Towne Marina, 850 NE 3rd St,
STE 213, Dania, FL 33004