

MISSY — CAMPER & NICHOLSONS



Судостроитель:

CAMPER & NICHOLSONS

Год постройки: 1986

Модель: Крейсерская яхта

Цена: ЦЕНА ЯХТЫ ПО ЗАПРОСУ

Местонахождение: Aruba

Длина общая: 47' 6" (14.48m)

Ширина: 13' 8" (4.17m)

Мин. осадка: 5' 8" (1.73m)

Крейс. скорость: 7 Kts. (8 MPH)

Макс. скорость: 8 Kts. (9 MPH)

Купить **MISSY — CAMPER & NICHOLSONS** а также выбрать подходящую вам яхту из нашего каталога яхт вам поможет опытный яхтенный брокер Андрей Шестаков. На сегодняшний день компания **Shestakov Yacht Sales Inc.** имеет большое количество яхт в собственном списке продаж, а также тесно сотрудничает со всеми крупными яхтенными производителями по всему миру.

Для того чтобы купить яхту **MISSY — CAMPER & NICHOLSONS** а также проконсультироваться по любому вопросу связанному с покупкой, продажей, чартером яхт позвоните по телефону **+7(918)465-66-44**.

ОГЛАВЛЕНИЕ

ОГЛАВЛЕНИЕ	2
ХАРАКТЕРИСТИКИ	5
Обзор	5
Основная информация	5
Размеры	5
Скорость, вместимость и масса	5
Размещение	6
Корпус и палуба	6
Информация о двигателе	6
ПОДРОБНОЕ ОПИСАНИЕ	7
Accommodations	7
Guest Stateroom	7
Pilot Berth Cabin	7
Forward Head	7
Main Salon	7
Nav Station	7
Galley	8
Master Stateroom	8
Electronics and Navigation Equipment	8
Electrical System	8
Engine/ Mechanical Equipment	9
Sails and Rigging	9
Hull and Deck	10
Other Features	10
Refit Summary	10
Remarks	12
Exclusions	12
Исключения	12

Отказ от ответственности	12
ФОТОГРАФИИ	13
Main Salon from Companionway	13
Main Salon Looking Forward	13
Main Salon Looking Aft	13
Main Salon Port Side	13
Main Salon Starboard Side	13
Main Salon, Port, Aft to Galley	13
Galley	14
View Fwd from Galley to Dinette Area	14
Navigation Station	14
Bar Storage	14
Forward Guest Stateroom	14
Forward Guest Cabin with Filler	14
Forward Head	15
Guest Stateroom Looking Aft	15
Owner's Stateroom, Centerline Queen Berth	15
Owner's Stateroom, Forward Port	15
Owner's Head	16
Owner's Stateroom, Forward Starboard	16
Pilot Berth	16
Wet Locker	16
Engine Room, Forward	17
Engine Room, Aft	17
Stemhead	17
Foredeck	17
Deck, Looking Aft	17
Deck, Looking Aft	17
Mid-Deck	18

Cockpit	18
Cockpit	18
Aft Deck	18
Port Bow	18
Hull, Bow Angle Profile	18
Stern Quarter View	19
Profile	19
Rig	19
Under Sail	19
Under Spinnaker	20
Dinghy and Outboard	20
Layout	20
КОНТАКТЫ	21
Контактная информация	21
Телефоны	21
Время работы	21
Адрес	21

ХАРАКТЕРИСТИКИ

Обзор

MISSY was built by the renowned Camper and Nicholson's shipyard to very high standards and offers an ideal interior layout for extended live-aboard or bluewater cruising with her centerline queen aft and extra pilot berth forward of the salon. She has seen extremely light use after original delivery to the U.S., as evidenced by her low engine hours. Her second owner undertook a comprehensive refit, with further upgrades added by her current owner over the past two years. MISSY should be considered by anyone looking for a pedigree yacht in excellent condition.

Основная информация

Тип судна: Крейсерская яхта

Подкатегория: Aft Cockpit

Модельный год: 1986

Год постройки: 1986

Год обновления: 2015

Вид обновления: New electronics, batteries, generator rebuilt, new water pump and water heater, new toilets, new 140% genoa, new anchor windlass and chain, new dodger and sun awning

Страна: Aruba

Верх: Dodger

Размеры

Длина общая: 47' 6" (14.48m)

Длина по ватерлинии: 36' 3" (11.05m)

Ширина: 13' 8" (4.17m)

Мин. осадка: 5' 8" (1.73m)

Скорость, вместимость и масса

Крейс. скорость: 7 Kts. (8 MPH)

Макс. скорость: 8 Kts. (9 MPH)

Водоизмещение: 33000 Pounds

Вместимость воды: 150 Gallons

Объем топливного бака: 170 Gallons

Размещение

Всего кают: 2

Всего коек: 5

Спальные места: 7

Всего ком. состава: 2

Корпус и палуба

Материал корпуса: Fiberglass

Материал палубы: Fiberglass

Цвет корпуса: White

Отделка корпуса: Stainless Steel

Дизайнер корпуса: David Pedrick

Информация о двигателе

Двигатели: 1

Производитель: Perkins

Модель: 4-236

Тип двигателя: Inboard

Тип топлива: Diesel

ПОДРОБНОЕ ОПИСАНИЕ

Accommodations

Sleeps four owners and guests in two staterooms, plus pilot berth in passageway and two settee berths, for a total of seven berths.

Finely crafted teak joinerwork finished to a high level throughout the interior. Cabin soles are teak and holly with a gloss finish. Upholstery is beige or blue UltraSuede throughout. Roll away hatch screens and blinds and lee cloths for all berths and settees.

Guest Stateroom

Beginning forward is a private stateroom with a large V-berth and several lockers, drawers and a large hanging locker. A removable filler piece can be used for conversion to a large double berth.

Pilot Berth Cabin

The passageway going forward features a pilot berth to starboard with generous storage underneath and privacy doors at each end. This area is very useful for additional bulk storage or a comfortable sea berth due to its location.

Forward Head

Opposite to port is a head with electric toilet, Corian countertops, hot/cold shower and abundant storage.

Main Salon

MISSY's main salon is quite spacious for a vessel of this size, featuring an L-shaped settee to port and large salon table with fold-up leaves and storage inside. To starboard is a full-length settee. There is lots of storage space under and outboard each side, as well as an entertainment center to starboard and custom bar storage to port. Opening hatches, portholes and portlights provide great light and ventilation.

Nav Station

Aft and to starboard is a full-function navigation station with easy access to the cockpit. There are built-in switch panels, navigation instruments and a built-in seat with backrest.

Galley

Further aft and to port is a long walk-through galley with exceptional counter space finished with Corian. There are several well-thought-out storage lockers for glasses, dinnerware and appliances and an impressive array of storage lockers for provisions. Separate top- and front-opening refrigerator and freezer compartments, Force 10 four-burner propane stove with oven, twin stainless sinks, retractable faucet and manual fresh- and saltwater pumps. Full galleyware included.

Master Stateroom

The owner's private stateroom is located aft and features a large queen-sized berth on centerline that is easily accessible from each side. Countertops and numerous storage lockers are outboard, with twin hanging lockers forward, a vanity to port and small settee to starboard. A private head with shower is found along the starboard side and features an electric toilet, Corian vanity, teak grate and numerous storage lockers.

Electronics and Navigation Equipment

- Raymarine C-125 multifunctional chart/radar display at nav station with C-95 repeater at helm (both new 2014)
- Raymarine 4 kW 18" digital radar dome (new 2014)
- Navionics east coast and Caribbean charts
- Autohelm 6000 autopilot with remote
- Raymarine ST60 wind, speed and depth in cockpit
- Raymarine Ray 55 VHF (new 2014)
- Raymarine Ray 218 VHF (new 2014)
- Sirius SR150 weather & satellite receiver (new 2014)
- XM Stereo with DVD player and six speakers and controls at helm
- Flat screen TV
- Weems & Plath clock and barometer

Electrical System

- 110 volt AC/ 12 volt DC electrical system with custom panels and full meters at nav station
- (6) Batteries total: (4) house batteries (2014), (2) engine and generator start (2014)
- Balmar 170 amp alternator for house; 55 amp alternator for engine
- Heart Interface Freedom 100 amp charger/inverter
- Next Gen 5.5 KW compact generator (2007), 520 hours (rebuilt 2015)
- (2) 30 amp shore power inlets with cord
- Electrical bonding system, including 3" copper strips running bow to stern each side

- 12 volt plugs in cockpit and throughout interior
- Cabin fans at each berth and in main salon and galley

Engine/ Mechanical Equipment

- Perkins 4-236, 85 hp diesel with dedicated starting battery and full metering at pedestal
- Racor fuel filters for engine and generator
- Max three-blade feathering prop
- New cutlass bearing (2013)
- Pioneer air conditioning for salon and aft cabin, 16,000 BTU total
- Dual engine drive/ AC refrigeration system
- Tank Tender level indicators
- Raritan electric toilets (new 2015)
- Twin 20-gallon holding tanks, forward and aft, with direct overboard or deck pump-out
- All stainless tanks, except for a 100-gallon bladder fuel tank under V-berth
- Pressurized fresh water with water heater (new pump and heater 2015)
- Twin automatic electric bilge pumps
- Manual bilge pump
- Anchor washdown pump
- (2) 10-lb propane tanks and regulator in ventilated deck locker
- (3) Hand-held fire extinguishers

Sails and Rigging

- Hood electric Stoway mast with double spreader rig
- Furlex genoa furler
- Stainless wire standing rigging (new 2012)
- Navtec hydraulic backstay adjuster
- Inner forestay and running backstays
- Rigid boom vang
- Lewmar mainsheet traveler system
- Masthead light, steaming light, foredeck light
- Hood furling mainsail (2011)
- Doyle 140% genoa (new 2015)
- Hood 120% genoa (2011)
- Forestay sail
- Cruising spinnaker
- Lewmar #55 self-tailing primary winches
- Lewmar #48 self-tailing outhaul and secondary winches
- Lewmar #43 self-tailing mainsheet and furler winches
- Lewmar #43 self-tailing secondary winches
- Four self-tailing Lewmar halyard winches – (1) # 46, (2) #43, (1) #40

Hull and Deck

Solid hand-laid fiberglass hull with internal stiffeners and balsa core above the waterline. Integral lead keel encapsulated by hull laminate. Fiberglass deck with balsa core. Deck and hull all repainted 2007. Topsides are white Awlgrip with gold cove stripe, black double boot stripes and black bottom. New epoxy barrier coating also applied 2007. Decks are white Awlgrip with beige non-skid.

Spacious cockpit with customized steering pedestal and sail controls all within reach of helm. All Lewmar deck hardware, including (4) hatches, (12) portholes, genoa tracks and blocks. There are two dorade vents, multiple chocks, deck cleats where needed and twin bow rollers.

Other Features

- Lewmar H3 anchor windlass (new 2014)
- Rocna 75 lb. primary anchor with all chain rode (new chain 2014)
- Bruce 44 lb. anchor w/ 300' nylon rode and 40' chain
- Danforth anchor with rode and chain
- Bimini (tan) (new 2012) and dodger (new 2014) with connector and helm window (new 2014)
- Sun awning (2015)
- Cockpit cushions
- Bare teak caprails, hand rails and cockpit coaming
- Teak cockpit grates
- Varnished teak cockpit table
- Aluminum swimming/boarding ladder with teak treads
- Hot/cold shower at starboard side deck
- 8-Man liferaft in stainless cradle on deck
- Lifesling
- Horseshoe life ring
- (6) Life jackets
- Docklines
- (4) Fenders
- Varnished teak companionway hatch board
- Magma gas BBQ
- Achilles inflatable dinghy with Mercury 3.5 hp four stroke outboard motor (both 2011)
- Numerous spares
- Full tool kit

Refit Summary

Completed 2014/2015:

- New electronics
- New batteries
- Generator rebuilt
- New water pump, water heater
- New toilets
- New 140% genoa
- New anchor windlass and chain
- New dodger and sun awning

Completed 2010/2011:

- New 100-gallon bladder fuel tank under V-berth
- New primary anchor
- New dinghy and outboard
- New cabin curtains
- New Hood sails
- Sirius weather station
- Main engine cooling system and injectors rebuilt

Completed 2007:

- Bottom stripped with new epoxy barrier coat
- Hull, deck and mast painted with Awlgrip
- Main engine transmission removed and re-built
- New propeller and prop shaft
- New Next Gen 5.5 KW generator
- New 170 amp house alternator
- New engine room sound insulation
- New air conditioning
- New fresh water plumbing
- New waste plumbing, holding tanks and electric toilets
- All new electronics, stereo and flat screen TV
- All new lighting fixtures
- New stove and propane system
- New sink faucets
- New Corian countertops
- All winches removed and rebuilt
- All new running rigging
- New Furlex genoa furler
- New hydraulic backstay adjuster
- Rebuilt Stoway furler motor
- Windlass rebuilt
- New anchors and chain
- New Lewmar hatches and portholes, new glass for portlights
- Seacocks serviced or replaced as needed

- New cockpit cushions
- All new interior upholstery

Remarks

MISSY was built by the renowned Camper and Nicholsons shipyard to very high standards and offers an ideal interior layout for extended live-aboard or bluewater cruising with her centerline queen aft and extra pilot berth forward of the salon. She has seen extremely light use after original delivery to the U.S., as evidenced by her low engine hours. Her second owner undertook a comprehensive refit as noted above, with further upgrades added by her current owner over the past two years.

MISSY should be considered by anyone looking for a pedigree yacht in excellent condition.

Exclusions

The owner's personal effects are excluded from the sale.

Исключения

При продаже яхты исключаются личные вещи владельца.

Отказ от ответственности

Компания предоставляет описание судна или яхты добросовестно, но не может гарантировать точность этой информации, а также не ручается за техническое состояние. Покупатель должен проинструктировать своих агентов или оценщиков исследовать представленную информацию более подробно, по собственному желанию. Продажа судна или яхты, изменение цены или снятие с продажи будет происходить без предварительного уведомления.

ФОТОГРАФИИ

Main Salon from Companionway



Main Salon Looking Forward



Main Salon Looking Aft



Main Salon Port Side



Main Salon Starboard Side



Main Salon, Port, Aft to Galley



Galley



View Fwd from Galley to Dinette Area



Bar Storage



Navigation Station



Forward Guest Stateroom



Forward Guest Cabin with Filler



Guest Stateroom Looking Aft



Forward Head



Owner's Stateroom, Centerline Queen Berth



Owner's Stateroom, Forward Port



Owner's Stateroom, Forward Starboard



Owner's Head



Pilot Berth



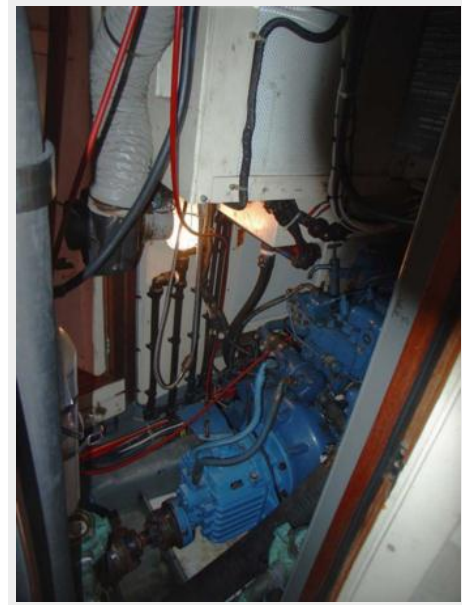
Wet Locker



Engine Room, Forward



Engine Room, Aft



Stemhead



Foredeck



Deck, Looking Aft



Deck, Looking Aft



Mid-Deck



Cockpit



Cockpit



Aft Deck



Port Bow



Hull, Bow Angle Profile



Profile



Stern Quarter View



Under Sail



Rig



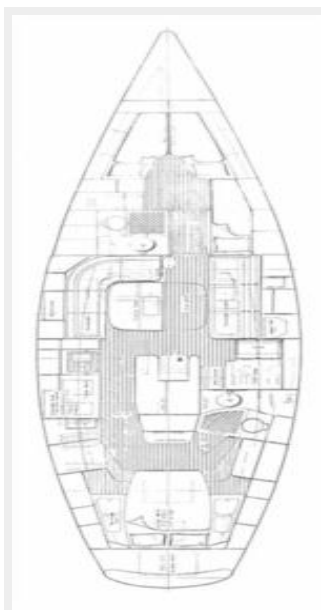
Under Spinnaker



Dinghy and Outboard



Layout



КОНТАКТЫ

Андрей Шестаков (Andrey Shestakov) – ведущий яхтенный брокер отдела продаж яхт и судов компании Shestakov Yacht Sales Inc. Официальный представитель Shestakov Yacht Sales Inc. для русскоговорящих клиентов в центральном офисе компании в Майами/Форт Лодердейл/Флорида/США.

Контактная информация

Email: andrey@shestakovyachtsales.com

Web: shestakovyachtsales.com

Телефоны

Краснодарский край: **+7(918)465-66-44**

США, Майами, Флорида: **+1(954)274-4435**

Время работы

Понедельник – Суббота: **9:00 - 21:00**
EDT

Воскресенье: **Закрето**

Адрес



Harbour Towne Marina, 850 NE 3rd St,
STE 213, Dania, FL 33004