

NONI — AZIMUT



Builder: AZIMUT

Year Built: 1999

Model: Motor Yacht

Price: PRICE ON APPLICATION

Location: Cyprus

LOA: 97' 10" (29.80m)

Beam: 21' 8" (6.60m)

Min Draft: 5' 3" (1.60m)

Cruise Speed: 22 Kts. (25 MPH)

Max Speed: 26 Kts. (30 MPH)

Our experienced yacht broker, Andrey Shestakov, will help you choose and buy a yacht that best suits your needs **NONI — AZIMUT** from our catalogue. Presently, at Shestakov Yacht Sales Inc., we have a wide variety of yachts available on our sale's list. We also work in close contact with all the big yacht manufacturers from all over the world.

If you would like to buy a yacht **NONI — AZIMUT** or would like help answering any questions concerning purchasing, selling or chartering a yacht, please call **+1(954)274-4435**

TABLE OF CONTENTS

TABLE OF CONTENTS	2
SPECIFICATIONS	4
Overview	4
Basic Information	4
Dimensions	4
Speed, Capacities and Weight	4
Accommodations	4
Hull and Deck Information	5
Engine Information	5
DETAILED INFORMATION	6
Accommodations	6
Audio And Visual Equipment	6
Deck Equipment	6
Electrical System	6
Electronics and Navigational Equipment	7
Engine /Mechanical Equipment	8
Exclusions	8
Refit History	8
Safety And Fire Protection	10
Tenders	10
Exclusions	10
Disclaimer	10
PHOTOS	12
CONTACTS	21
Contact details	21
Telephones	21
Office hours	21
Address	21

SPECIFICATIONS

Overview

One of the most popular Azimut Jumbo 30m example.

ABS classed and MCA compliant, she offers a great volume in 4 cabins, especially on her main deck.

Commercially registered and VAT paid.

Basic Information

Category: Motor Yacht

Model Year: 1999

Year Built: 1999

Refit Year: 2009

Country: Cyprus

Cockpit: Yes

Dimensions

LOA: 97' 10" (29.80m)

Beam: 21' 8" (6.60m)

Min Draft: 5' 3" (1.60m)

Speed, Capacities and Weight

Cruise Speed: 22 Kts. (25 MPH)

Max Speed: 26 Kts. (30 MPH)

Displacement: 220462.262 Pounds

Gross Tonnage: 153 Pounds

Water Capacity: 528.344104 Gallons

Fuel Capacity: 3698.408728 Gallons

Accommodations

Total Cabins: 4

Total Berths: 10

Hull and Deck Information

Hull Material: GRP

Hull Color: WHITE

Exterior Designer: STEFANO RIGHINI

Interior Designer: GALEAZZI, ITALY

Engine Information

Engines: 2

Manufacturer: MTU

Model: "V" 16

Engine Type: Inboard

Fuel Type: Diesel

DETAILED INFORMATION

Accommodations

OWNER: Double cabin with Jacuzzi "Whirlpool" and shower room en suite

GUESTS: 2x Twin/Triple cabins (with pulmann berths) with shower rooms en suite;

CREW: 2x Twin cabins sharing shower room

Audio And Visual Equipment

- LG 37" TV flat screen (main salon)
- LG 23' TV flat screen (owner's suite)
- TV's in crew mess & guest cabins
- Seatl satellite TV system
- Sea Tel Coastal 24 Satellite Dish Antenna
- Extensive stereo hi-fi systems throughout inc CD players in all Guest cabins

Deck Equipment

- 2x 205lb/90kg anchors
- 1x electro-hydraulic tender/wave runner launching & recovery cradle system in Laz
- Electro-hydraulic retractable gangway
- The transom acts as a hydraulically operated watertight door and converts into a wide teack laid swim platform
- 2x 3.6 shackles/325ft/99m lenght (13mm chains)
- Custom fixed awning on flybridge

Electrical System

Generators

GENERATORS: 2x 45kw Kohler diesel generators in sound shield boxes with control panels and 12v DC starters

GENERATOR Port: 7.767 hours (24-Oct-11)
 HOURS: Stbd: 7.573 hours (24-Oct-11)

Electricity

AC 3 phase 50hz

ELECTRICITY: 220v AC single phase 50hz
 24v DC
 12v DC

Electronics and Navigational Equipment

Communications Equipment

- Inmarsat Nera M satellite communication system
- Skanti VHF 3000 radio telephone
- Skanti HF/SB PRP7000 radio telephone
- Paasonic type KX-TA616CE telephone exchange

Navigation Equipment

- Radio Zeeland electronic compass
- Furuno type FC-1411 radar (72 miles)
- Simrad type EQ30 LCD depth sounder
- Rayteon Pathfinder type SL70 radar (48 miles)
- Simrad fluxgate compass
- Furuno GP 1600 GPS chart plotter
- Robertson depth indicator
- ICS Nav5 GMDSS Navtex receiver

Engine /Mechanical Equipment

GEARBOXES: 2x 2536:1 ZF reverse reduction gearboxes

BOWTHRUSTER: 35hp BCS electro-hydraulic

WATERMAKERS: Idromar reverse osmosis watermaker, 3.360 litres/day

MC3J Auto 180L/HR Self Contained 380/3/50

OTHER: Tecma Marine WC (freshwater system) with chargeover to sea water pump

Exclusions

A complete list of exclusions is available upon request.

Refit History

a. Entertainment System throughout the whole yacht upgraded:

*Seatel Coastal 24 Antenna Set Added

*All TVs, DVDs, CD Players Changed and Replaced and Upgraded

b. Interior Upholstery:

* Change of Ceiling Alkandara on All decks

*Change of under floor panelling and wool carpet on all decks

*New Guy Laroche Bed Linen

*New Guy Laroche Towelling

*Cabins/Salon/ Dining Room Refurnished plus New Curtains with Andrew Martin Materials

* New Mattresses, Pillows, Quilts in all Cabins Plus Crew Cabins

c. Ships Monitoring System:

* Upgraded from DMP Software System to Golden A/S; extra sensors and alarms added

d. Hull Prevention Treatments:

* Anti-Osmosis PREVENTION treatment to Hull

e.Engines:

* Major W4 Maintenance done to Engines

f. Airconditioning System:

* Change of All Fancoils/ Built in Remote Controls and Ducts

g. WC System:

*All toilet remote controls and solenoid valves changed

h. Woodworks:

* Maintenance and treatment of all interior wood and wood panellings

i. Miscellaneous:

*Purchase of New Life Jackets and Water Toys

Safety And Fire Protection

- 2x Eurvinil 8 man inflatable liferafts in glassfibre valises
- CO2 and dry powder portable fire extinguishers throughout
- 2x liferings
- Raymarine CCTV video security system
- Life jackets
- 3x 45kg CO2 bottles in lazarette for engine room fire fighting
- Medical Kit
- 3x seawater fire hydrants & hoses

Tenders

1x Yamaha GP1200 wave runner

Exclusions

Owner's personal belongings.

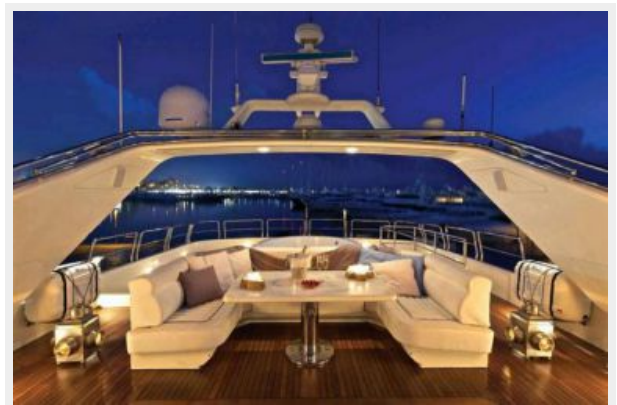
Disclaimer

The Company offers the details of this vessel or yacht in good faith but cannot guarantee or warrant the accuracy of this information nor warrant the condition of the vessel. A buyer should instruct his representatives, agents, or his surveyors, to investigate such details as the buyer desires validated. This vessel or yacht is offered subject to prior sale, price change, or withdrawal

without notice.

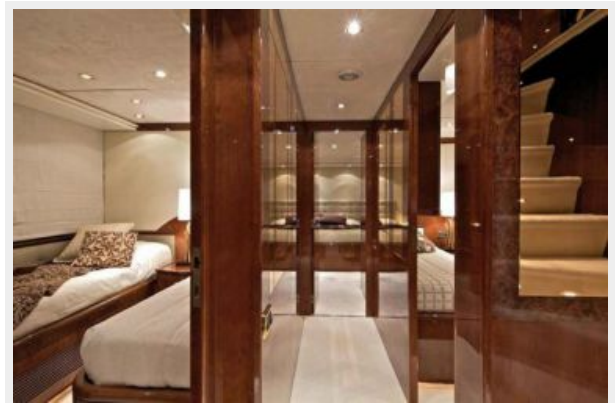
PHOTOS

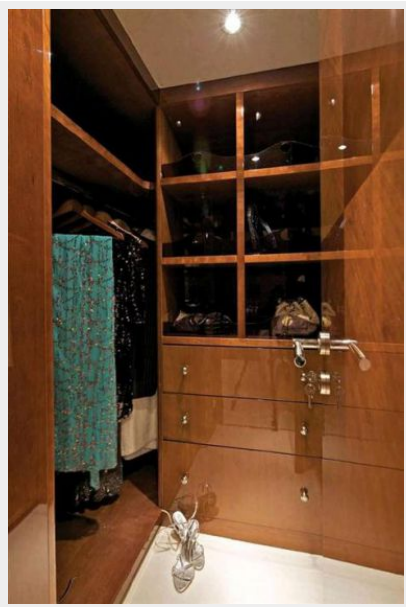


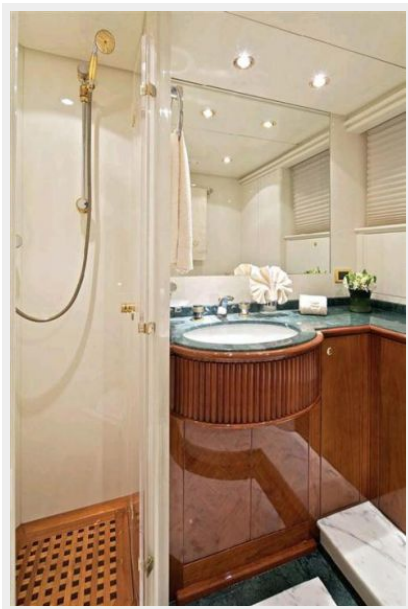
















CONTACTS

Andrey Shestakov, leading yacht broker of the sales department of Shestakov Yacht Sales Inc. Shestakov Yacht Sales Inc., the official representative of the Miami/Fort Lauderdale FL headquarters.

Contact details

Email: andrey@shestakovyachtsales.com

Web: shestakovyachtsales.com/en/

Telephones

USA: +1(954)274-4435

Office hours

Monday – Saturday: **9:00 - 21:00** EDT

Sunday: **closed**

Address



Harbour Towne Marina, 850 NE 3rd St,
STE 213, Dania, FL 33004