

NADEZHDA — FERRETTI



Builder: FERRETTI

Year Built: 2002

Model: Motor Yacht

Price: PRICE ON APPLICATION

Location: Russian Federation

LOA: 73' 3" (22.33m)

Beam: 18' 0" (5.49m)

Max Draft: 5' 6" (1.68m)

Cruise Speed: 25 Kts. (29 MPH)

Max Speed: 35 Kts. (40 MPH)

Our experienced yacht broker, Andrey Shestakov, will help you choose and buy a yacht that best suits your needs **Nadezhda — FERRETTI** from our catalogue. Presently, at Shestakov Yacht Sales Inc., we have a wide variety of yachts available on our sale's list. We also work in close contact with all the big yacht manufacturers from all over the world.

If you would like to buy a yacht **Nadezhda — FERRETTI** or would like help answering any questions concerning purchasing, selling or chartering a yacht, please call **+1(954)274-4435**

TABLE OF CONTENTS

TABLE OF CONTENTS	2
SPECIFICATIONS	3
Overview	3
Basic Information	4
Dimensions	4
Speed, Capacities and Weight	4
Accommodations	5
Hull and Deck Information	5
Engine Information	5
DETAILED INFORMATION	6
Extra equipment	6
Technical details	6
Exclusions	7
Disclaimer	7
PHOTOS	8
CONTACTS	18
Contact details	18
Telephones	18
Office hours	18
Address	18

SPECIFICATIONS

Overview

Perfect condition, less than 1000 engine hours. Purchased new from shipyard, the owner and the crew doesn't changed since delivery.

For sale together with company, the only one asset of the company is this yacht. There are no any sailing or operation restrictions, registration is transparent and legitimate in official Russian Registry, but excluding VAT. You will be able to sell the yacht out of company in June 2015.

Extra equipment

Jet ski Yamaha Superjet 700 (new 2 engine hours) Dinghy Pro Jet 350 Zodiac (4 pax) + 40 h.p outboard Custom black marble of kitchen panels Decorative bedspreads (all beds) Anchor chain marked every 10 m Cockpit chairs Control station in cockpit Electric cooker on flybridge Cover for flybridge Metal keelblock Crew cabin Set of fenders and mooring lines Smoke alarms in each cabin Trash press Leather upholstery of dining chairs Lights of the stairs leading to the cabins Water lights Mosquito nets Refrigerator GE 220/24V Stainless steel rubrail Remote control of the gangway Electrically driven cable reel fixing Spare propellers Spare shafts Set of spare parts for engine Custom marble at master bathroom Sterilizer for fresh water UVA 220v Trash maserator in the galley 220v Wooden "Venetian" blinds in the bathrooms (different for each) Additional dinning chairs Antenna SAT KVH Transvision G5 with a digital receiver Lifting TV 28 "LCD Tridata Raytheon ST-60 Microwave + grill De Longhi

Technical details of the vessel

Date and place of construction: 2002, Italy Author and Project number: Feiretti SpA, "Ferretti 72 # 47" Gross tonnage: 481.6 m3/170, 2 register tonns Dock weight: 36.320 tonns Total displacement: 44.00 tonns Seating capacity: 12 persons

Hull

Estimated size of the vessel, m: - LWL 20.03 m; - breadth 5.38 m; - board height 3.68 m Overall size of the vessel, m - length of 22.33 m; - width 5.48 m; full height from keel to the mast top 6.12 m Freeboard: 1.2m. Material: GRP Method of manufacturing molded with boards Number of bulkheads: 6 Enclosure Type: adjustable geometry, the angle of deadrise or lifting heads or cheeks (above the base line of the vessel) is 15.5 degrees. The length of the frame (ISO 8666): 72 feet 3 inches Total length (ISO 8666): 72 feet 3 inches The maximum width of the ship - beam (one of the horizontal cross beams extending from one side of the vessel to the other): 18 feet Draft at maximum load: 5 feet 6 inches Maximum capacity: 97,020 pounds (1 pound = 453.6 g)

Superstructure

Material: GRP Number of levels: one Not participate in the general bending of the vessel

The main engines

2 x diesel Caterpillar N 3412 DITA Power, speed of 2 x 1044 kW (1420 hp) = 2088 kW (2480 hp)
2500 r / min Serial numbers Starboard - 9KSO1587, Port-9K5O1589 Remote Control Type:
Electric The number, type, speed propulsion: two 4-bladed propeller 2425 r / min

Diesel generators

2 x diesel generator Yanmar-Kohler Power, speed 16 kW ± 5 kW 1500 r / min

Steering gear

Type of steering gears: electrohydraulic Drive System: Hydraulic The number, type of steering
bodies: 2 semibalanced rudders Thruster: Bow SP-220 TC 11 kW

Other Features

Fuel tank capacity: 1321 U.S. Gallons / 5000 l Water capacity: 264 U.S. Gallons / 1000 l

Basic Information

Category: Motor Yacht

Sub Category: Flybridge

Model Year: 2002

Year Built: 2002

Country: Russian Federation

Fly Bridge: Yes

Cockpit: Yes

Dimensions

LOA: 73' 3" (22.33m)

LWL: 61' 3" (18.67m)

Beam: 18' 0" (5.49m)

Max Draft: 5' 6" (1.68m)

Speed, Capacities and Weight

Cruise Speed: 25 Kts. (29 MPH)

Max Speed: 35 Kts. (40 MPH)

Displacement: 97003.39528 Pounds

Water Capacity: 264 Gallons

Holding Tank: 120 Gallons

Fuel Capacity: 1321 Gallons

Accommodations

Total Cabins: 4

Total Berths: 4

Sleeps: 8

Total Heads: 4

Crew Cabin: 1

Crew Berths: 2

Crew Sleeps: 2

Crew Heads: 1

Hull and Deck Information

Hull Material: Fiberglass

Deck Material: Teak

Hull Configuration: Deep Vee

Hull Color: white

Hull Designer: Ferretti Group

Engine Information

Engines: 2

Manufacturer: Caterpillar

Model: 3412 DITA

Engine Type: Inboard

Fuel Type: Diesel

DETAILED INFORMATION

Extra equipment

Jet ski Yamaha Superjet 700 Dinghy Pro Jet 350 Zodiac (4 pax) + 40 h.p outboard Custom black marble of kitchen panels Decorative bedspreads (all beds) Anchor chain marked every 10 m Cockpit chairs Control station in cockpit Electric cooker on flybridge Cover for flybridge Metal keelblock

Crew cabin

Set of fenders and mooring lines Smoke alarms in each cabin

Trash press

Leather upholstery of dining chairs Lights of the stairs leading to the cabins Water lights Mosquito nets Refrigerator GE 220/24V Stainless steel rubrail Remote control of the gangway Electrically driven cable reel fixing Spare propellers Spare shafts Set of spare parts for engine Custom marble at master bathroom Sterilizer for fresh water UVA 220v Trash maserator in the galley 220v Wooden "Venetian" blinds in the bathrooms (different for each) Additional dinning chairs Antenna SAT KVH Transvision G5 with a digital receiver Lifting TV 28 "LCD Tridata Raytheon ST-60 Microwave + grill De Longhi

Technical details

Date and place of construction: 2002, Italy Author and Project number: Feiretti SpA, "Ferretti 72 # 47" Gross tonnage: 481.6 m³/170, 2 register tonns Dock weight: 36.320 tonns Total displacement: 44.00 tonns Seating capacity: 12 persons **Hull** Estimated size of the vessel, m:- LWL 20.03 m;- breadth 5.38 m;- board height 3.68 m Overall size of the vessel, m- length of 22.33 m;- width 5.48 m;- full height from keel to the mast top 6.12 m Freeboard: 1.2m. Material: GRP Method of manufacturing molded with boards Number of bulkheads: 6 Enclosure Type: adjustable geometry, the angle of deadrise or lifting heads or cheeks (above the base line of the vessel) is 15.5 degrees. The length of the frame (ISO 8666): 72 feet 3 inches Total length (ISO 8666): 72 feet 3 inches The maximum width of the ship - beam (one of the horizontal cross beams extending from one side of the vessel to the other): 18 feet Draft at maximum load: 5 feet 6 inches Maximum capacity: 97,020 pounds (1 pound = 453.6 g) **Superstructure** Material: GRP Number of levels: one Not participate in the general bending of the vessel **The main engines** 2 x diesel Caterpillar N 3412 DITA Power, speed of 2 x 1044 kW (1420 hp) = 2088 kW (2480 hp) 2500 r / min Serial numbers Starboard - 9KSO1587, Port-9K5O1589 Remote Control Type: Electric The number, type, speed propulsion: two 4-bladed propeller 2425 r / min **Diesel generators** 2 x diesel generator Yanmar-Kohler Power, speed 16 kW ± 5 kW 1500 r / min **Steering gear** Type of steering gears: electrohydraulic Drive System: Hydraulic The number, type of steering bodies: 2

semibalanced rudders Thruster: Bow SP-220 TC 11 kW **Other Features** Fuel tank capacity: 1321 U.S. Gallons / 5000 l Water capacity: 264 U.S. Gallons / 1000 l

Exclusions

Owner's personal belongings.

Disclaimer

The Company offers the details of this vessel or yacht in good faith but cannot guarantee or warrant the accuracy of this information nor warrant the condition of the vessel. A buyer should instruct his representatives, agents, or his surveyors, to investigate such details as the buyer desires validated. This vessel or yacht is offered subject to prior sale, price change, or withdrawal without notice.

PHOTOS



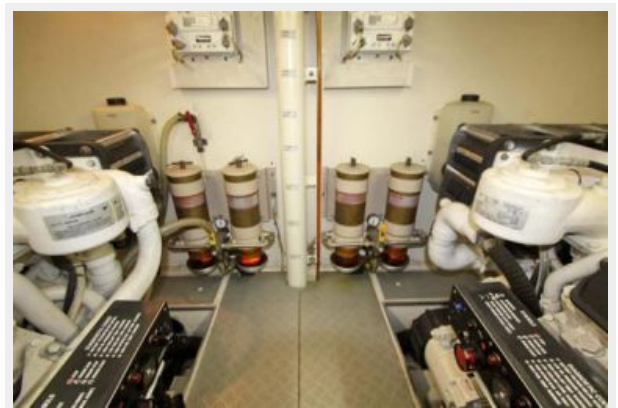




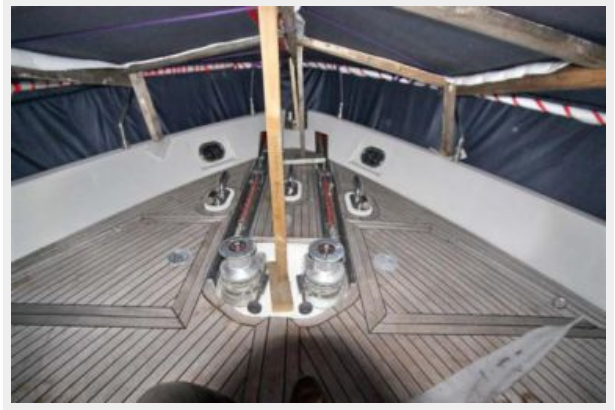














CONTACTS

Andrey Shestakov, leading yacht broker of the sales department of Shestakov Yacht Sales Inc. Shestakov Yacht Sales Inc., the official representative of the Miami/Fort Lauderdale FL headquarters.

Contact details

Email: andrey@shestakovyachtsales.com

Web: shestakovyachtsales.com/en/

Telephones

USA: +1(954)274-4435

Office hours

Monday – Saturday: **9:00 - 21:00** EDT

Sunday: **closed**

Address



Harbour Towne Marina, 850 NE 3rd St,
STE 213, Dania, FL 33004