

MYSTIC BOND — NORTH SHORE BOAT



Судостроитель: NORTH SHORE BOAT

Год постройки: 2001

Модель: Траулер

Цена: **ЦЕНА ЯХТЫ ПО ЗАПРОСУ**

Местонахождение: United States

Длина общая: 44' 0" (13.41m)

Ширина: 13' 4" (4.06m)

Мин. осадка: 4' 2" (1.27m)

Крейс. скорость: 9 Kts. (10 MPH)

Макс. скорость: 12 Kts. (14 MPH)

Купить **Mystic Bond — NORTH SHORE BOAT** а также выбрать подходящую вам яхту из нашего каталога яхт вам поможет опытный яхтенный брокер Андрей Шестаков. На сегодняшний день компания **Shestakov Yacht Sales Inc.** имеет большое количество яхт в собственном списке продаж, а также тесно сотрудничает со всеми крупными яхтенными производителями по всему миру.

Для того чтобы купить яхту **Mystic Bond — NORTH SHORE BOAT** а также проконсультироваться по любому вопросу связанному с покупкой, продажей, чартером яхт позвоните по телефону **+7(918)465-66-44**.

ОГЛАВЛЕНИЕ

ОГЛАВЛЕНИЕ	2
ХАРАКТЕРИСТИКИ	6
Обзор	6
Основная информация	6
Размеры	7
Скорость, вместимость и масса	7
Размещение	7
Корпус и палуба	7
Информация о двигателе	8
ПОДРОБНОЕ ОПИСАНИЕ	9
44' North Shore Trawler Overview	9
44' North Shore Trawler Vessel Walkthrough	9
44' North Shore Trawler Accommodations	9
44' North Shore Trawler Salon	9
44' North Shore Trawler Galley	10
44' North Shore Trawler Dining	10
44' North Shore Trawler Master Stateroom	10
44' North Shore Trawler Guest Stateroom	10
44' North Shore Trawler Lower Helm	10
44' North Shore Trawler Flybridge/Aftdeck	10
44' North Shore Trawler Audio And Visual Equipment	10
44' North Shore Trawler Electronics and Navigational Equipment	11
44' North Shore Trawler Electrical System	11
44' North Shore Trawler Engine /Mechanical Equipment	12
44' North Shore Trawler Deck Equipment	12
44' North Shore Trawler Hull	13
44' North Shore Trawler Safety And Fire Protection	13
44' North Shore Trawler Exclusions	14

Исключения	14
Отказ от ответственности	14
ФОТОГРАФИИ	15
44' North Shore Trawler port profile photo2	15
44' North Shore Trawler port profile photo1	15
44' North Shore Trawler port forward profile	15
44' North Shore Trawler forward profile	15
44' North Shore Trawler pulpit	16
44' North Shore Trawler aft profile	16
44' North Shore Trawler anchor windlass	16
44' North Shore Trawler foredeck	16
44' North Shore Trawler port side deck photo1	17
44' North Shore Trawler foredeck aft	17
44' North Shore Trawler port side deck photo2	17
44' North Shore Trawler starboard side deck photo1	17
44' North Shore Trawler starboard side deck photo2	18
44' North Shore Trawler flybridge forward	18
44' North Shore Trawler flybridge aft	18
44' North Shore Trawler flybridge port	18
44' North Shore Trawler flybridge helm	19
44' North Shore Trawler flybridge starboard	19
44' North Shore Trawler swimplatform access	19
44' North Shore Trawler swimplatform	19
44' North Shore Trawler tender	20
44' North Shore Trawler tender outboard	20
44' North Shore Trawler salon forward	20
44' North Shore Trawler salon aft	20
44' North Shore Trawler salon port forward	20
44' North Shore Trawler salon port	20

44' North Shore Trawler salon port seating	21
44' North Shore Trawler galley photo1	21
44' North Shore Trawler galley photo2	21
44' North Shore Trawler lower helm photo1	21
44' North Shore Trawler lower helm photo2	21
44' North Shore Trawler master stateroom	21
44' North Shore Trawler master stateroom port	22
44' North Shore Trawler master stateroom starboard	22
44' North Shore Trawler master stateroom head	22
44' North Shore Trawler master stateroom forward	22
44' North Shore Trawler master stateroom shower	23
44' North Shore Trawler guest stateroom	23
44' North Shore Trawler guest stateroom port	23
44' North Shore Trawler guest stateroom starboard	23
44' North Shore Trawler guest head	24
44' North Shore Trawler guest stateroom desk	24
44' North Shore Trawler engine room	24
44' North Shore Trawler engine room forward access	24
44' North Shore Trawler engine room aft	25
44' North Shore Trawler main engine photo1	25
44' North Shore Trawler Racor fuel filters	25
44' North Shore Trawler main engine photo2	25
44' North Shore Trawler gearbox	25
44' North Shore Trawler hydraulic system	25
44' North Shore Trawler port fuel tanks	26
44' North Shore Trawler starboard fuel tanks	26
44' North Shore Trawler water heater	26
44' North Shore Trawler heater	26
44' North Shore Trawler electrical panel	26

44' North Shore Trawler generator sound box	26
44' North Shore Trawler generator	27
44' North Shore Trawler inverter	27
44' North Shore Trawler solar panels photo1	27
44' North Shore Trawler solar panels photo2	27
44' North Shore Trawler hauled out forward profile	27
44' North Shore Trawler hauled out port forward profile	27
44' North Shore Trawler hauled out starboard forward profile	28
44' North Shore Trawler hauled out running gear photo1	28
44' North Shore Trawler hauled out running gear photo2	28
44' North Shore Trawler hauled out bowthruster	28
КОНТАКТЫ	29
Контактная информация	29
Телефоны	29
Время работы	29
Адрес	29

ХАРАКТЕРИСТИКИ

Обзор

44' Rosborough North Shore Custom Trawler

In 2001, the sellers commissioned North Shore Boats in Nova Scotia to build a 44' hull designed by James D. Rosborough for the Northumberland Strait fishing fleet. Once the hull, tanks, engine and hydraulic system were installed, the hull was moved to The Big Pond Boat Shop for the superstructure and final completion. Launched in 2002, the sellers then cruised locally until they departed Halifax, Nova Scotia in 2006 and have been cruising aboard Mystic Bond ever since.

The sellers' goal was to design and create a liveaboard trawler with an efficient single engine and the reliability of a hydraulic bowthruster, anchor windlass, steering system and water pump in a self-sufficient environment, allowing them to anchor for long periods. They also wanted the safety and reliability of a proven commercial hull design to meet their anticipated sea conditions safely. With a large engine room, all systems are easily accessible for maintenance too.

Mystic Bond has a large master stateroom and ample and comfortable guest quarters and general living and entertainment areas. The result of these efforts has made Mystic Bond a perfect custom trawler. Price reduced!

Основная информация

Тип судна: Траулер	Подкатегория: Long Range Cruiser
Модельный год: 2002	Год постройки: 2001
Страна: United States	Номер регистрации в береговой охране: 824251/Halifax
Верх: Hardtop	Открытая палуба мостика: Да
Кубрик: Да	

Размеры

Длина общая: 44' 0" (13.41m)

Длина по ватерлинии: 40' 9" (12.42m)

Длина палубы: 40' 0" (12.19m)

Ширина: 13' 4" (4.06m)

Мин. осадка: 4' 2" (1.27m)

Трапы: 15' 1" (4.60m)

Скорость, вместимость и масса

Крейс. скорость: 9 Kts. (10 MPH)

Крейсерская скорость поворота: 1450 Kts.

Дальность на крейсерской скорости: 900

Макс. скорость: 12 Kts. (14 MPH)

Макс. скорость поворота: 2000 Kts.

Водоизмещение: 32000 Pounds

Чистый вес: 23 Pounds

Вместимость воды: 206 Gallons

Вместимость сточного бака: 124 Gallons

Объем топливного бака: 469 Gallons

Размещение

Всего кают: 2

Всего коек: 3

Спальные места: 4

Всего ком. состава: 2

Корпус и палуба

Материал корпуса: Fiberglass

Материал палубы: Composite

Комплектация корпуса: Semi-Displacement

Цвет корпуса: Flag Blue

Отделка корпуса: Fiberglass

Дизайнер корпуса: James D. Rosborough

Информация о двигателе

Двигатели: 1

Производитель: John Deere

Модель: 6081 AFM

Тип двигателя: Inboard

Тип топлива: Diesel

ПОДРОБНОЕ ОПИСАНИЕ

44' North Shore Trawler Overview

In 2001, the sellers commissioned North Shore Boats in Nova Scotia to build a 44' hull designed by James D. Rosborough for the Northumberland Strait fishing fleet. Once the hull, tanks, engine and hydraulic system were installed, the hull was moved to The Big Pond Boat Shop for the superstructure and final completion. Launched in 2002, the sellers then cruised locally until they departed Halifax, Nova Scotia in 2006 and have been cruising aboard Mystic Bond ever since.

The sellers' goal was to design and create a liveaboard trawler with an efficient single engine and the reliability of a hydraulic bowthruster, anchor windlass, steering system and water pump in a self-sufficient environment, allowing them to anchor for long periods. They also wanted the safety and reliability of a proven commercial hull design to meet their anticipated sea conditions safely. With a large engine room, all systems are easily accessible for maintenance too.

Mystic Bond has a large master stateroom and ample and comfortable guest quarters and general living and entertainment areas. The result of these efforts has made Mystic Bond a perfect custom trawler. Price reduced!

44' North Shore Trawler Vessel Walkthrough

Entering the salon through the starboard side deck access door, you will walk through the lower helm and find the guest stateroom forward, a seat and desk port forward, settee and table port aft and galley starboard aft. The master stateroom is aft and engine room access is through a door in the guest stateroom or a deck hatch in the salon. Both side decks lead aft and up to the flybridge/aftdeck. New screens were added to all doors and hatches in 2015.

44' North Shore Trawler Accommodations

Mystic Bond offers a full beam aft master stateroom with queen size berth and ensuite head, with separate shower, and a guest stateroom forward with v-berths and a second ensuite head. New shower fixtures and sump were installed in 2014.

44' North Shore Trawler Salon

Due to the large side windows, the salon has a very open, airy and comfortable feel to it. There is a settee and table port aft, a seat and desk port forward, lower helm starboard forward and galley starboard aft.

44' North Shore Trawler Galley

The galley is located starboard aft in the salon.

- Norcold 12vdc/110vac/propane refrigerator/freezer
- Force 10 3-burner cooktop and oven
- Microwave oven - New galley faucet installed in 2014

44' North Shore Trawler Dining

Dining is available at the settee and table port aft in the salon.

44' North Shore Trawler Master Stateroom

The full beam master stateroom is located aft and offers a queen size centerline berth, ensuite head and separate shower, storage cabinetry, hanging lockers, portlights.

44' North Shore Trawler Guest Stateroom

The guest stateroom is located forward and offers a v-berth, ensuite head, storage cabinets and hanging locker, portlights and overhead deck hatch for plenty of natural light and ventilation. There is also an office area port aft and a forward access door to the engine room.

44' North Shore Trawler Lower Helm

The lower helm is located starboard forward in the salon and has a starboard side deck access door, helm seat and full electronics in the console.

44' North Shore Trawler Flybridge/Aftdeck

The aft flybridge offers a full helm forward, storage cabinet to starboard and seating area aft. The deck is non-skid and there is a hard dodger with Bimini top (2012) and access to both side decks. Because of the design of Mystic Bond, this area is also an aftdeck or sundeck area. The helm was painted in 2013.

44' North Shore Trawler Audio And Visual Equipment

- Clarion D-400 AM/FM/CD player
- XM/Sirius satellite radio receiver
- Vizio 29" flat screen TV
- Seawatch TV antenna

44' North Shore Trawler Electronics and Navigational Equipment

- Raymarine E80 chart plotter with Navionics chart chips
- Raymarine RL70 Radar/chartplotter with C-Map chart chips
- Raynav 300 WASS GPS
- Raymarine GPS 125
- Raymarine ST6000 autopilot
- 2 X Raymarine ST60 multi-system displays
- Ritchie magnetic compass
- 2 X Azimuth 1000 fluxgate compasses
- Raymarine Ray50 handheld VHF
- Icom M504 DSC VHF
- Ray 200 VHF/hailer

44' North Shore Trawler Electrical System

- Norpro 9 kW generator with 60 hours
- Balmar 220 amp alternator for house battery bank
- Nippon Denso 100 amp alternator for start battery
- 3 X Group 31 135 amp hour house batteries (2013)
- 2 X 900 CCA start batteries (2011)
- Blue Sea battery switches/AC/DC panels

- 2 X Kyocera 120 watt solar panels with regulator (2006)
- Link 10 battery monitoring system
- Xantrex 2000 watt inverter/charger
- ProSine monitoring panel

44' North Shore Trawler Engine /Mechanical Equipment

- Single John Deere 6081 AFM, 8.1 litre, 375 hp main engine
- 24" Vetus water lift exhaust (2005)
- Kobelt 2015 double lever engine control
- ZF Marine 2:1 IRM280PL gearbox
- Single Racor 900MA 2 micron fuel filter between main tanks and day tank
- Dual Racor 75/1000MAX 2 micron fuel filters between day tank and engine
- Eaton hydraulic system pump
- Banjo 2" hydraulic Whispurr 240 gpm wash down pump
- 8" 8 hp Keypower hydraulic bow thruster - Marine Air systems reverse cycle air conditioning/heating system (2015)
- 24" X 24" 5 bladed LH propeller
- 2.5" stainless steel shaft
- 90 gallon day fuel tank
- 62 gallon black water tank
- 62 gallon grey water tank
- 13 gallon water heater
- Espar diesel fired heater

44' North Shore Trawler Deck Equipment

- Kingston 45kg anchor
- Danforth S2000 43 pd anchor
- 75' Acco 5/16" G40 galvanized anchor chain
- 50' Acco 3/8" G30 galvanized anchor chain
- 200' 5/8" nylon anchor rode
- 2 X 50' 5/8" nylon mooring lines
- 6 X 35' 5/8" nylon mooring lines
- 5 Scanmarine 10" X 26" fenders
- 2 X large ball fenders
- Stainless steel deck hardware

44' North Shore Trawler Hull

- 25oz. ISO-NPG, vinylester skinned, biaxial laminates
- Pettit sandless primer/waterbarrier 6999
- New bottom paint in 2014
- Thru-bolted 1/4" X 4" stainless steel shoe keel guard - The hull was painted in 2012

44' North Shore Trawler Safety And Fire Protection

- CO2 monitors
- Propane monitor and shut off switch
- 2 X 3000 gpm Bilge pumps high water alarm
- Flag Fire Spaceman NAF-S-III automatic fire suppression system in engine room
- 3 X 10 lb Class ABC portable fire extinguishers
- Flares
- Lifejackets

- Lifering

44' North Shore Trawler Exclusions

- Seller's personal belongings
- Neptune carving
- Seller's personal tools

Исключения

При продаже яхты исключаются личные вещи владельца.

Отказ от ответственности

Компания предоставляет описание судна или яхты добросовестно, но не может гарантировать точность этой информации, а также не ручается за техническое состояние. Покупатель должен проинструктировать своих агентов или оценщиков исследовать представленную информацию более подробно, по собственному желанию. Продажа судна или яхты, изменение цены или снятие с продажи будет происходить без предварительного уведомления.

ФОТОГРАФИИ

44' North Shore Trawler port profile photo1



44' North Shore Trawler port profile photo2



44' North Shore Trawler port forward profile



44' North Shore Trawler forward profile



44' North Shore Trawler aft profile



44' North Shore Trawler pulpit



44' North Shore Trawler anchor windlass



44' North Shore Trawler foredeck



**44' North Shore Trawler port side deck
photo1**



44' North Shore Trawler foredeck aft



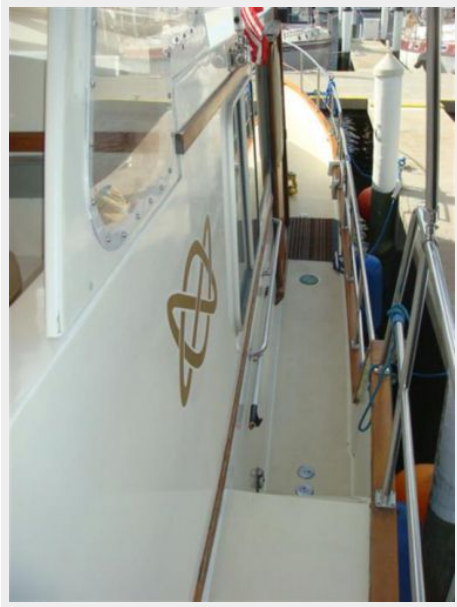
**44' North Shore Trawler port side deck
photo2**



**44' North Shore Trawler starboard side deck
photo1**



**44' North Shore Trawler starboard side deck
photo2**



44' North Shore Trawler flybridge forward



44' North Shore Trawler flybridge aft



44' North Shore Trawler flybridge port



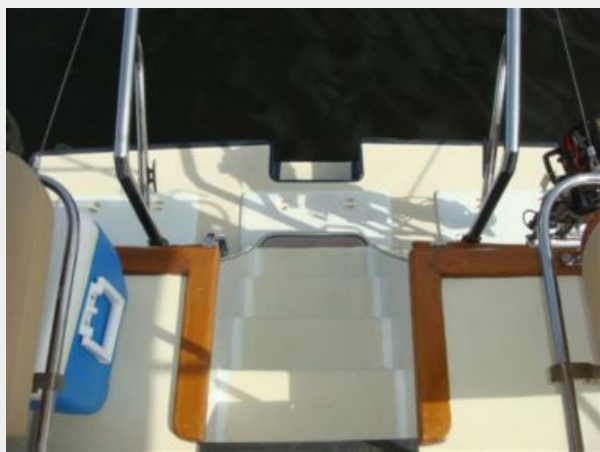
44' North Shore Trawler flybridge starboard



44' North Shore Trawler flybridge helm



44' North Shore Trawler swimplatform access



44' North Shore Trawler swimplatform



44' North Shore Trawler tender



44' North Shore Trawler tender outboard



44' North Shore Trawler salon forward



44' North Shore Trawler salon aft



44' North Shore Trawler salon port forward



44' North Shore Trawler salon port



44' North Shore Trawler salon port seating



44' North Shore Trawler galley photo1



44' North Shore Trawler galley photo2



44' North Shore Trawler lower helm photo1



44' North Shore Trawler lower helm photo2



44' North Shore Trawler master stateroom



44' North Shore Trawler master stateroom port



44' North Shore Trawler master stateroom starboard



44' North Shore Trawler master stateroom forward



44' North Shore Trawler master stateroom head



44' North Shore Trawler master stateroom shower



44' North Shore Trawler guest stateroom



44' North Shore Trawler guest stateroom port



44' North Shore Trawler guest stateroom starboard



44' North Shore Trawler guest stateroom desk



44' North Shore Trawler guest head



44' North Shore Trawler engine room forward access



44' North Shore Trawler engine room



44' North Shore Trawler engine room aft



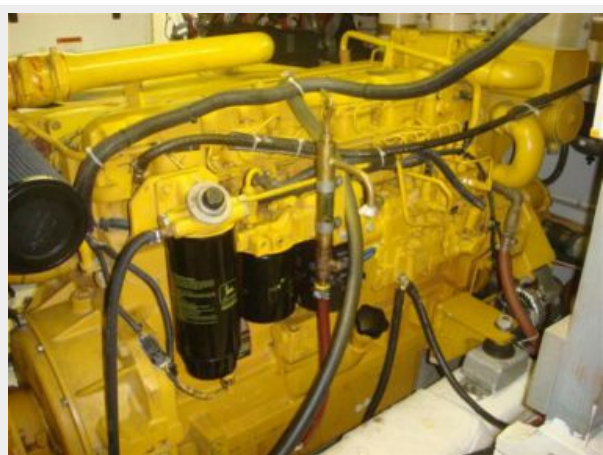
44' North Shore Trawler main engine photo1



44' North Shore Trawler Racor fuel filters



44' North Shore Trawler main engine photo2



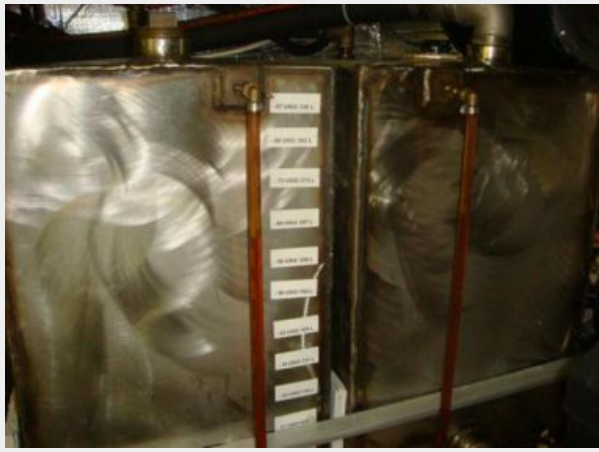
44' North Shore Trawler gearbox



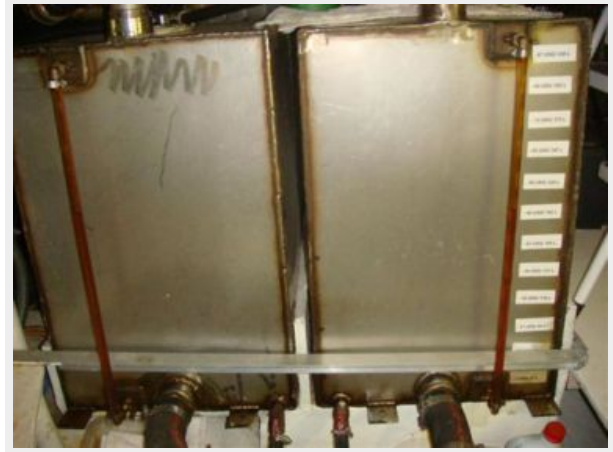
44' North Shore Trawler hydraulic system



44' North Shore Trawler port fuel tanks



44' North Shore Trawler starboard fuel tanks



44' North Shore Trawler water heater



44' North Shore Trawler heater



44' North Shore Trawler electrical panel



44' North Shore Trawler generator sound box



44' North Shore Trawler generator



44' North Shore Trawler inverter



44' North Shore Trawler solar panels photo1 44' North Shore Trawler solar panels photo2



44' North Shore Trawler hauled out forward profile



44' North Shore Trawler hauled out port forward profile



44' North Shore Trawler hauled out starboard forward profile



44' North Shore Trawler hauled out running gear photo1



44' North Shore Trawler hauled out running gear photo2



44' North Shore Trawler hauled out bowthruster



КОНТАКТЫ

Андрей Шестаков (Andrey Shestakov) – ведущий яхтенный брокер отдела продаж яхт и судов компании Shestakov Yacht Sales Inc. Официальный представитель Shestakov Yacht Sales Inc. для русскоговорящих клиентов в центральном офисе компании в Майами/Форт Лодердейл/Флорида/США.

Контактная информация

Email: andrey@shestakovyachtsales.com

Web: shestakovyachtsales.com

Телефоны

Краснодарский край: **+7(918)465-66-44**

США, Майами, Флорида: **+1(954)274-4435**

Время работы

Понедельник – Суббота: **9:00 - 21:00**
EDT

Воскресенье: **Закрето**

Адрес



Harbour Towne Marina, 850 NE 3rd St,
STE 213, Dania, FL 33004