

## 56' PRINCESS 56 1993 — PRINCESS YACHTS



**Builder:** PRINCESS YACHTS

**LOA:** 56' 0" (17.07m)

**Year Built:** 1993

**Beam:** 15' 2" (4.62m)

**Model:** Motor Yacht

**Price:** PRICE ON APPLICATION

**Location:** Greece

Our experienced yacht broker, Andrey Shestakov, will help you choose and buy a yacht that best suits your needs 56' Princess 56 1993 — PRINCESS YACHTS from our catalogue. Presently, at Shestakov Yacht Sales Inc., we have a wide variety of yachts available on our sale's list. We also work in close contact with all the big yacht manufacturers from all over the world.

If you would like to buy a yacht 56' Princess 56 1993 — PRINCESS YACHTS or would like help answering any questions concerning purchasing, selling or chartering a yacht, please call +1(954)274-4435

# TABLE OF CONTENTS

TABLE OF CONTENTS	2
SPECIFICATIONS	3
Basic Information	3
Dimensions	3
Speed, Capacities and Weight	3
Accommodations	3
Hull and Deck Information	3
Engine Information	3
DETAILED INFORMATION	4
Interior Finish & Salon	4
Cockpit & Fly Bridge	4
Electrical Systems	4
Galley	5
Water & Safety Systems	5
Engine Room	5
Deck Equipment	6
Helm	6
Accommodations	6
Exclusions	7
Disclaimer	7
PHOTOS	8
CONTACTS	13
Contact details	13
Telephones	13
Office hours	13
Address	13

---

# SPECIFICATIONS

---

## Basic Information

---

**Category:** Motor Yacht

**Model Year:** 1993

**Year Built:** 1993

**Country:** Greece

**Cockpit:** Yes

## Dimensions

---

**LOA:** 56' 0" (17.07m)

**Beam:** 15' 2" (4.62m)

## Speed, Capacities and Weight

---

**Water Capacity:** 150 Gallons

**Fuel Capacity:** 470 Gallons

## Accommodations

---

**Total Berths:** 8

**Total Heads:** 3

## Hull and Deck Information

---

**Hull Material:** Fiberglass

## Engine Information

---

**Engines:** 2

**Manufacturer:** Volvo

**Model:** D12/615

**Engine Type:** Inboard

**Fuel Type:** Diesel

## DETAILED INFORMATION

### Interior Finish & Salon

Furniture finished in a classic cherry wood with clear lacquer finish and marquetry inlay Console area finished in burr-elm \*Upholstery fabrics, carpets and curtains from co-ordinated range Galley units fitted with Avonite worktops Laid-timber galley floor Overhead and individual berth lights Opening portholes. Bathroom/WC: Electric flush WC Washbasin with hot and cold water supply STORAGE \* All suites and cabins have generous storage comprising lockers, drawers and shelves as appropriate. SALON U-shaped sofa with coffee table Two seater sofa opposite Sideboard unit incorporating refrigerator, icemaker and bottle and glass storage Multi-standard TV/VCR Stereo CD/radio with saloon and exterior speakers and interchange switch Stainless steel framed sliding door to cockpit Aft-facing electric-powered drop window Tinted side and aft windows Clear forward windscreens All windows in toughened safety glass with stainless steel frames Venetian blinds, curtains or sunscreens to all windows and doors Overhead downlighters and pelmet lights Dining area with oval table and U-shaped seating for 6 Spiral internal staircase to flybridge Clock and barometer

### Cockpit & Fly Bridge

COCKPIT Self-draining teak-laid deck Upholstered seat Hatch to lazarette stowage on gas strut Separate hatch for engine room access Steps to side decks Cockpit lighting Speakers from saloon stereo CD/radio Stainless-steel handrails Cockpit lockers Locker containing remote fuel cocks and manual bilge pump with valve chest Locker containing 220/240v shore support inlet and cable storage Fender storage locker Rope storage lockers Locker for life raft (not supplied) Cockpit cover Stainless-steel ladder to flybridge Transom door leading to bathing platform Full-length transom bathing platform with foldaway swimming ladder, hot and cold shower, teak grating and fender stowage and 2.9m telescopic passerelle with remote control. FLY BRIDGE Seating for 8 Double helm seat U-shaped sofa with drinks table Fly bridge wet bar with refrigerator, electric barbecue grill and hot and cold water supply Separate sunbed Console and seat covers Wind deflector screen Hydraulic steering with adjustable wheel position Repeat engine controls and instruments Visual and audible engine warning system Bow thruster controls Bilge pump audible alarm Rudder position indicator Autopilot controls Trim tab controls Horn Searchlight remote control High-speed compass Echo sounder and log repeaters Dual-station VHF R/T with intercom Anchor winch remote control Radar arch GRP hatch to aft cockpit Door to salon stairway Guard rails Speakers from saloon stereo CD/radio

### Electrical Systems

24 Volt: 2 x heavy-duty batteries for engine starting 6 x heavy-duty auxiliary batteries (all batteries

130AH) Engine alternators charge via relay system to isolate engine start batteries from auxiliaries 40-amp 24v float battery charger connected to both battery banks Remote battery master switches with controls at main switch panel Circuit breakers on all circuits 24v to 12v voltage dropper for certain navigation and radio circuits. 220/240 Volt: 9kW diesel generator in own soundshield with water cooled and specially silenced exhaust Automatic fire extinguisher situated by generator 32-amp shore support inlet Generator/shore support change-over switch Polarity check system Earth leakage safety trip Circuit breakers on all circuits Power points in owner's stateroom, port and starboard cabins, galley (double), saloon area, dining area and utility area Shaver points in all bathrooms

---

## Galley

Avonite (or similar) work top Halogen/ceramic 4-zone hob with extractor vent over Combination microwave/ conventional oven with grill 24v/240v refrigerator/freezer Twin-bowl stainless-steel sink with hot and cold mixer tap Waste disposal bin Drawers and storage cupboards Overhead and concealed lighting UTILITY AREA Access from galley Storage cupboards Overhead lighting General stowage area Deep freeze Washing machine/dryer Re-chargeable vacuum cleaner

---

## Water & Safety Systems

WATER SYSTEM 2 water tanks totalling 134 gallons (609 litres) including 16 gallons (73 litres) hot water calorifier Water heated by engines and 240v immersion heater Thermostatic valve to limit maximum water temperature Automatic water pump with filter Main circuit breaker at 240v switch panel Water level gauge Deck filler FIRE EXTINGUISHERS Automatic fire extinguishers in engine room and generator space, additional automatic extinguisher Hand-operated fire extinguishers (5) in owner's stateroom, port and starboard cabins, galley and at main helm position. BILGE PUMPS Automatic electric bilge pumps (with manual override) in engine room (forward and aft), rudder area, lazarette and forward accommodation (5 in all) High-capacity manual bilge pump with valve system and suction points in same areas Electric bilge pumps have controls and warning lights at main helm console and warning light with audible alarm at flybridge helm console

---

## Engine Room

Engine room soundproofed High-volume air intakes Engine room extractor fan with electronic time delay Engine exhaust silencers and water-cooled exhaust Engine beds integrally bonded Engines flexibly mounted Automatic fire extinguisher Automatic and manual bilge pumps Engine room lighting Engine room access hatch and ladder from cockpit Propeller shafts in Temet with flexible shaft logs 4-bladed aquafoil propellers in nickel aluminium bronze High-speed balanced

rudders Cathodic protection for sterngear Sterngear, engines, fuel tanks, fillers etc all electrically bonded Power-assisted hydraulic steering system Single-lever engine and gearshift controls 8 hp bow thruster with dual-station controls Freshwater supply point in engine room FUEL SYSTEM Twin fuel tanks (in N4 marine grade alloy) with interconnection system giving 470 gallons (2136 litres) capacity Fuel fillers on port and starboard side decks Separ high capacity duplex fuel filters with water traps and changeover valves, water warning sensors connected to warning lights at lower helm Remote fuel cocks in cockpit locker Fuel gauges at main helm console

## Deck Equipment

Reversible electric anchor winch (2000W) with foredeck, helm position and flybridge controls Self-stowing 25kg Delta anchor with 40 metres of chain Stemhead roller with automatic anchor launch and retrieve Bow stowage locker Stainless-steel bow, stern and spring cleats Bow fairleads \* Stainless-steel pulpit and guard rails Stainless steel coachroof and flybridge handrails Stainless steel rubbing band with rubber insert Full set of IMCO navigation lights Riding light Twin-beam searchlight with dual-station remote controls Twin electric horns Loud hailer Fuel and water fillers Telescopic electro-hydraulic passerelle (2.8m) with tender/wetbike lift facility

## Helm

Twin helm seats with fore and aft adjustment for helmsman Stainless- steel framed toughened glass windscreen, clear for unimpaired night vision Electric-opening windows at helm position and also on port side Burr-elm instrument console with engine instruments, fuel gauges and rudder position indicator Single-lever engine controls Hydraulic steering Bow thruster control Flush-mounted radar (Furuno 1832) Autopilot Trim tab controls Horn button Searchlight remote control High-speed magnetic compass Speed and distance log Echo sounder with alarm Dual-station VHF radio telephone with intercom to flybridge and fore deck loud hailer Anchor winch remote control Chart table with light and chart stowage Triple windscreen wipers with freshwater windscreen wash system Bilge pump controls and warning lights Contaminated fuel warning light 24v and 240v control panels PVC sunscreens

## Accommodations

OWNER'S SUITE Large double bed with quilted bedspread Dressing table Wardrobes and shelves Stereo CD/radio Overhead and individual berth lights Deck hatch with sliding blind Opening portholes Full-length mirror En-suite shower/WC: Electric-flush WC Washbasin with hot and cold mixer tap Toothbrush/mug and towel holders Separate circular shower cubicle with automatic shower pump-out Extractor fan Porthole Storage locker PORT AND STARBOARD GUEST CABINS Two full-size single berths with quilted bedspreads Large wardrobe with hanging space and shelf storage Full-length mirror Bedside table and storage verhead and

---

individual berth lights 2 opening portholes GUEST SHOWER/WC Electric-flush WC Washbasin with hot and cold mixer tap Toothbrush/ mug and towel holders

## Exclusions

---

Owner's personal belongings.

## Disclaimer

---

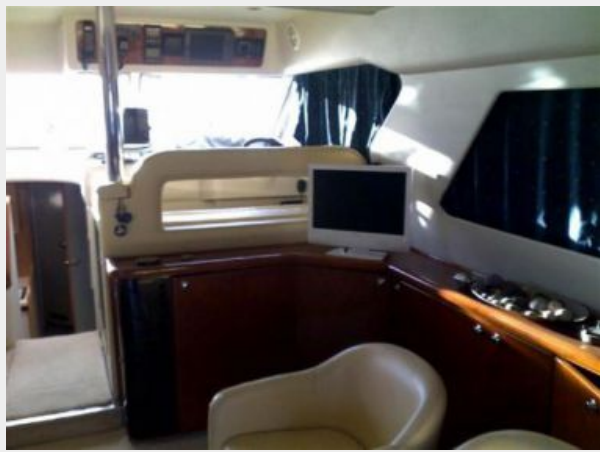
The Company offers the details of this vessel or yacht in good faith but cannot guarantee or warrant the accuracy of this information nor warrant the condition of the vessel. A buyer should instruct his representatives, agents, or his surveyors, to investigate such details as the buyer desires validated. This vessel or yacht is offered subject to prior sale, price change, or withdrawal without notice.

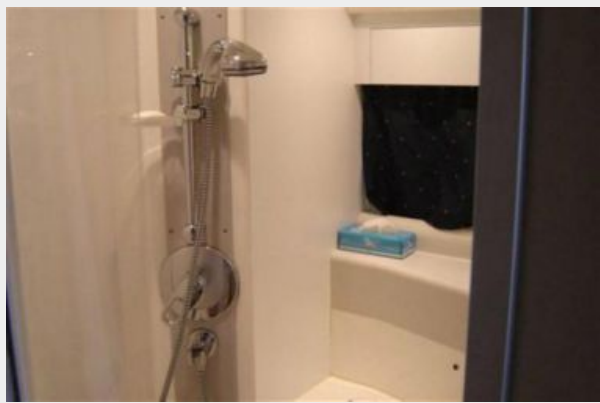
# PHOTOS

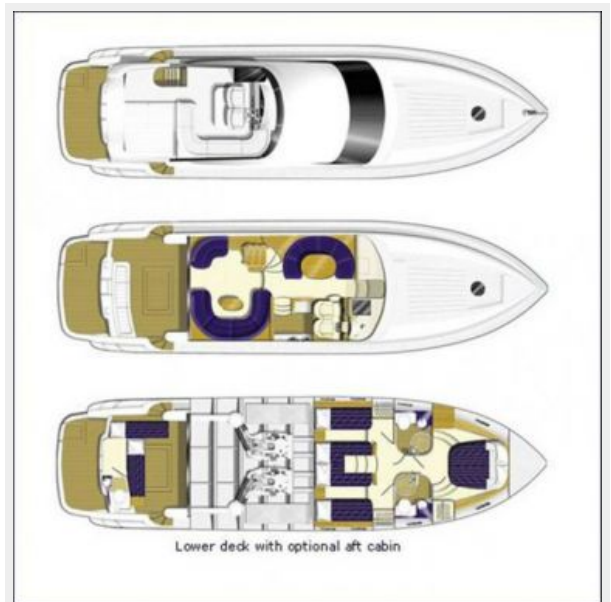
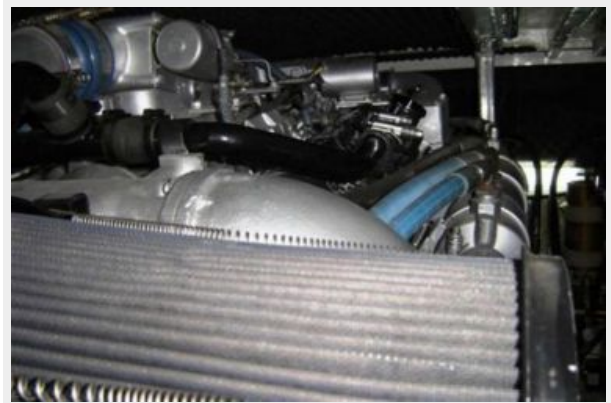
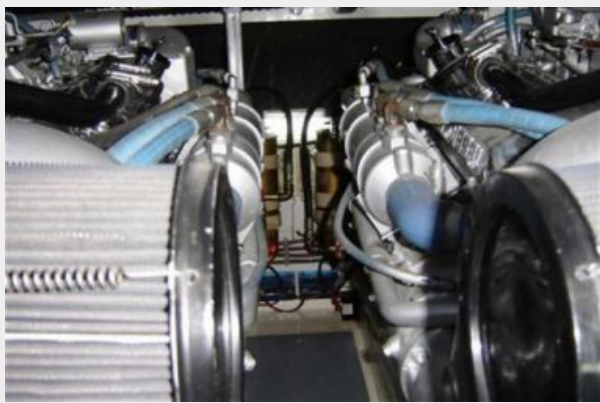












# CONTACTS

---

Andrey Shestakov, leading yacht broker of the sales department of Shestakov Yacht Sales Inc. Shestakov Yacht Sales Inc., the official representative of the Miami/Fort Lauderdale FL headquarters.

## Contact details

---

Email: [andrey@shestakovyachtsales.com](mailto:andrey@shestakovyachtsales.com)

Web: [shestakovyachtsales.com/en/](http://shestakovyachtsales.com/en/)

## Telephones

---

USA: +1(954)274-4435

## Office hours

---

Monday – Saturday: **9:00 - 21:00** EDT

Sunday: **closed**

## Address

---



Harbour Towne Marina, 850 NE 3rd St,  
STE 213, Dania, FL 33004