

56' PRINCESS 56 1993 — PRINCESS YACHTS



Судостроитель: PRINCESS YACHTS

Год постройки: 1993

Модель: Моторная яхта

Цена: ЦЕНА ЯХТЫ ПО ЗАПРОСУ

Местонахождение: Greece

Длина общая: 56' 0" (17.07m)

Ширина: 15' 2" (4.62m)

Купить 56' Princess 56 1993 — PRINCESS YACHTS а также выбрать подходящую вам яхту из нашего каталога яхт вам поможет опытный яхтенный брокер Андрей Шестаков. На сегодняшний день компания Shestakov Yacht Sales Inc. имеет большое количество яхт в собственном списке продаж, а также тесно сотрудничает со всеми крупными яхтенными производителями по всему миру. Для того чтобы купить яхту 56' Princess 56 1993 — PRINCESS YACHTS а также проконсультироваться по любому вопросу связанному с покупкой, продажей, чартером яхт позвоните по телефону **+7(918)465-66-44**.

ОГЛАВЛЕНИЕ

ОГЛАВЛЕНИЕ	2
ХАРАКТЕРИСТИКИ	3
Основная информация	3
Размеры	3
Скорость, вместимость и масса	3
Размещение	3
Корпус и палуба	3
Информация о двигателе	3
ПОДРОБНОЕ ОПИСАНИЕ	4
Interior Finish & Salon	4
Cockpit & Fly Bridge	4
Electrical Systems	4
Galley	5
Water & Safety Systems	5
Engine Room	5
Deck Equipment	6
Helm	6
Accommodations	6
Исключения	7
Отказ от ответственности	7
ФОТОГРАФИИ	8
КОНТАКТЫ	13
Контактная информация	13
Телефоны	13
Время работы	13
Адрес	13

ХАРАКТЕРИСТИКИ

Основная информация

Тип судна: Моторная яхта

Модельный год: 1993

Год постройки: 1993

Страна: Greece

Кубрик: Да

Размеры

Длина общая: 56' 0" (17.07m)

Ширина: 15' 2" (4.62m)

Скорость, вместимость и масса

Вместимость воды: 150 Gallons

Объем топливного бака: 470 Gallons

Размещение

Всего коек: 8

Всего ком. состава: 3

Корпус и палуба

Материал корпуса: Fiberglass

Информация о двигателе

Двигатели: 2

Производитель: Volvo

Модель: D12/615

Тип двигателя: Inboard

Тип топлива: Diesel

ПОДРОБНОЕ ОПИСАНИЕ

Interior Finish & Salon

Furniture finished in a classic cherry wood with clear lacquer finish and marquetry inlay Console area finished in burr-elm *Upholstery fabrics, carpets and curtains from co-ordinated range Galley units fitted with Avonite worktops Laid-timber galley floor Overhead and individual berth lights Opening portholes. Bathroom/WC: Electric flush WC Washbasin with hot and cold water supply STORAGE * All suites and cabins have generous storage comprising lockers, drawers and shelves as appropriate. SALON U-shaped sofa with coffee table Two seater sofa opposite Sideboard unit incorporating refrigerator, icemaker and bottle and glass storage Multi-standard TV/VCR Stereo CD/radio with saloon and exterior speakers and interchange switch Stainless steel framed sliding door to cockpit Aft-facing electric-powered drop window Tinted side and aft windows Clear forward windscreens All windows in toughened safety glass with stainless steel frames Venetian blinds, curtains or sunscreens to all windows and doors Overhead downlighters and pelmet lights Dining area with oval table and U-shaped seating for 6 Spiral internal staircase to flybridge Clock and barometer

Cockpit & Fly Bridge

COCKPIT Self-draining teak-laid deck Upholstered seat Hatch to lazarette stowage on gas strut Separate hatch for engine room access Steps to side decks Cockpit lighting Speakers from saloon stereo CD/radio Stainless-steel handrails Cockpit lockers Locker containing remote fuel cocks and manual bilge pump with valve chest Locker containing 220/240v shore support inlet and cable storage Fender storage locker Rope storage lockers Locker for life raft (not supplied) Cockpit cover Stainless-steel ladder to flybridge Transom door leading to bathing platform Full-length transom bathing platform with foldaway swimming ladder, hot and cold shower, teak grating and fender stowage and 2.9m telescopic passerelle with remote control. FLY BRIDGE Seating for 8 Double helm seat U-shaped sofa with drinks table Fly bridge wet bar with refrigerator, electric barbecue grill and hot and cold water supply Separate sunbed Console and seat covers Wind deflector screen Hydraulic steering with adjustable wheel position Repeat engine controls and instruments Visual and audible engine warning system Bow thruster controls Bilge pump audible alarm Rudder position indicator Autopilot controls Trim tab controls Horn Searchlight remote control High-speed compass Echo sounder and log repeaters Dual-station VHF R/T with intercom Anchor winch remote control Radar arch GRP hatch to aft cockpit Door to salon stairway Guard rails Speakers from saloon stereo CD/radio

Electrical Systems

24 Volt: 2 x heavy-duty batteries for engine starting 6 x heavy-duty auxiliary batteries (all batteries

130AH) Engine alternators charge via relay system to isolate engine start batteries from auxiliaries 40-amp 24v float battery charger connected to both battery banks Remote battery master switches with controls at main switch panel Circuit breakers on all circuits 24v to 12v voltage dropper for certain navigation and radio circuits. 220/240 Volt: 9kW diesel generator in own soundshield with water cooled and specially silenced exhaust Automatic fire extinguisher situated by generator 32-amp shore support inlet Generator/shore support change-over switch Polarity check system Earth leakage safety trip Circuit breakers on all circuits Power points in owner's stateroom, port and starboard cabins, galley (double), saloon area, dining area and utility area Shaver points in all bathrooms

Galley

Avonite (or similar) work top Halogen/ceramic 4-zone hob with extractor vent over Combination microwave/ conventional oven with grill 24v/240v refrigerator/freezer Twin-bowl stainless-steel sink with hot and cold mixer tap Waste disposal bin Drawers and storage cupboards Overhead and concealed lighting UTILITY AREA Access from galley Storage cupboards Overhead lighting General stowage area Deep freeze Washing machine/dryer Re-chargeable vacuum cleaner

Water & Safety Systems

WATER SYSTEM 2 water tanks totalling 134 gallons (609 litres) including 16 gallons (73 litres) hot water calorifier Water heated by engines and 240v immersion heater Thermostatic valve to limit maximum water temperature Automatic water pump with filter Main circuit breaker at 240v switch panel Water level gauge Deck filler FIRE EXTINGUISHERS Automatic fire extinguishers in engine room and generator space, additional automatic extinguisher Hand-operated fire extinguishers (5) in owner's stateroom, port and starboard cabins, galley and at main helm position. BILGE PUMPS Automatic electric bilge pumps (with manual override) in engine room (forward and aft), rudder area, lazarette and forward accommodation (5 in all) High-capacity manual bilge pump with valve system and suction points in same areas Electric bilge pumps have controls and warning lights at main helm console and warning light with audible alarm at flybridge helm console

Engine Room

Engine room soundproofed High-volume air intakes Engine room extractor fan with electronic time delay Engine exhaust silencers and water-cooled exhaust Engine beds integrally bonded Engines flexibly mounted Automatic fire extinguisher Automatic and manual bilge pumps Engine room lighting Engine room access hatch and ladder from cockpit Propeller shafts in Temet with flexible shaft logs 4-bladed aquafoil propellers in nickel aluminium bronze High-speed balanced

rudders Cathodic protection for sterngear Sterngear, engines, fuel tanks, fillers etc all electrically bonded Power-assisted hydraulic steering system Single-lever engine and gearshift controls 8 hp bow thruster with dual-station controls Freshwater supply point in engine room FUEL SYSTEM Twin fuel tanks (in N4 marine grade alloy) with interconnection system giving 470 gallons (2136 litres) capacity Fuel fillers on port and starboard side decks Separ high capacity duplex fuel filters with water traps and changeover valves, water warning sensors connected to warning lights at lower helm Remote fuel cocks in cockpit locker Fuel gauges at main helm console

Deck Equipment

Reversible electric anchor winch (2000W) with foredeck, helm position and flybridge controls Self-stowing 25kg Delta anchor with 40 metres of chain Stemhead roller with automatic anchor launch and retrieve Bow stowage locker Stainless-steel bow, stern and spring cleats Bow fairleads * Stainless-steel pulpit and guard rails Stainless steel coachroof and flybridge handrails Stainless steel rubbing band with rubber insert Full set of IMCO navigation lights Riding light Twin-beam searchlight with dual-station remote controls Twin electric horns Loud hailer Fuel and water fillers Telescopic electro-hydraulic passerelle (2.8m) with tender/wetbike lift facility

Helm

Twin helm seats with fore and aft adjustment for helmsman Stainless- steel framed toughened glass windscreen, clear for unimpaired night vision Electric-opening windows at helm position and also on port side Burr-elm instrument console with engine instruments, fuel gauges and rudder position indicator Single-lever engine controls Hydraulic steering Bow thruster control Flush-mounted radar (Furuno 1832) Autopilot Trim tab controls Horn button Searchlight remote control High-speed magnetic compass Speed and distance log Echo sounder with alarm Dual-station VHF radio telephone with intercom to flybridge and fore deck loud hailer Anchor winch remote control Chart table with light and chart stowage Triple windscreen wipers with freshwater windscreen wash system Bilge pump controls and warning lights Contaminated fuel warning light 24v and 240v control panels PVC sunscreens

Accommodations

OWNER'S SUITE Large double bed with quilted bedspread Dressing table Wardrobes and shelves Stereo CD/radio Overhead and individual berth lights Deck hatch with sliding blind Opening portholes Full-length mirror En-suite shower/WC: Electric-flush WC Washbasin with hot and cold mixer tap Toothbrush/mug and towel holders Separate circular shower cubicle with automatic shower pump-out Extractor fan Porthole Storage locker PORT AND STARBOARD GUEST CABINS Two full-size single berths with quilted bedspreads Large wardrobe with hanging space and shelf storage Full-length mirror Bedside table and storage verhead and

individual berth lights 2 opening portholes GUEST SHOWER/WC Electric-flush WC Washbasin with hot and cold mixer tap Toothbrush/ mug and towel holders

Исключения

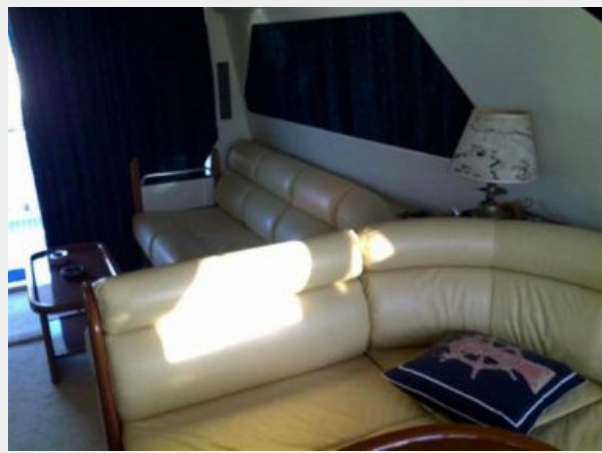
При продаже яхты исключаются личные вещи владельца.

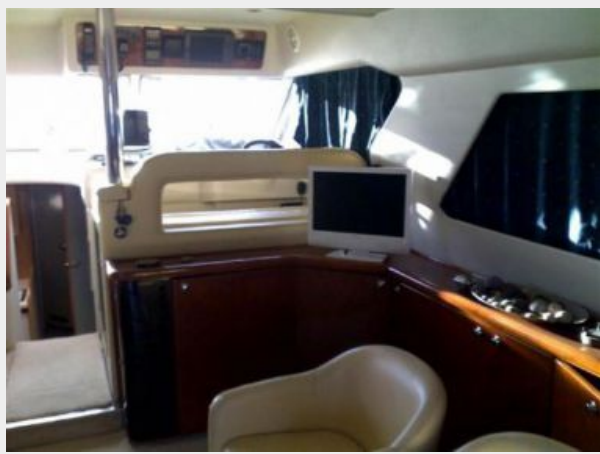
Отказ от ответственности

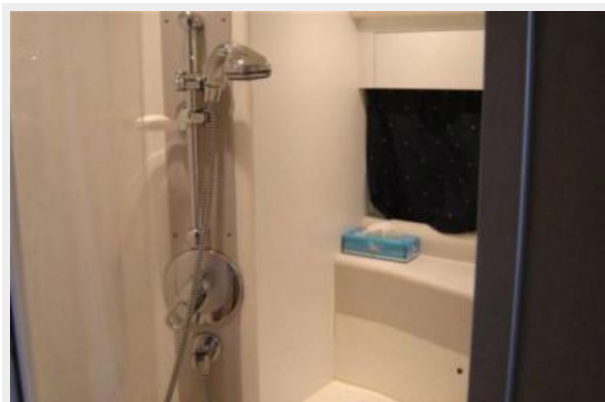
Компания предоставляет описание судна или яхты добросовестно, но не может гарантировать точность этой информации, а также не ручается за техническое состояние. Покупатель должен проинструктировать своих агентов или оценщиков исследовать представленную информацию более подробно, по собственному желанию. Продажа судна или яхты, изменение цены или снятие с продажи будет происходить без предварительного уведомления.

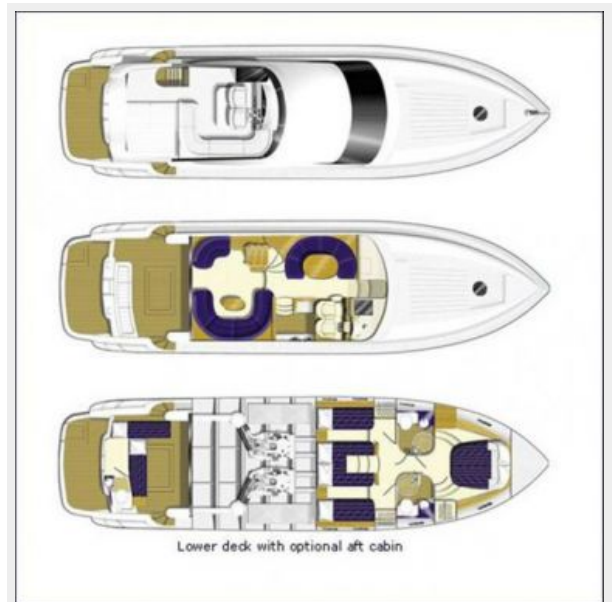
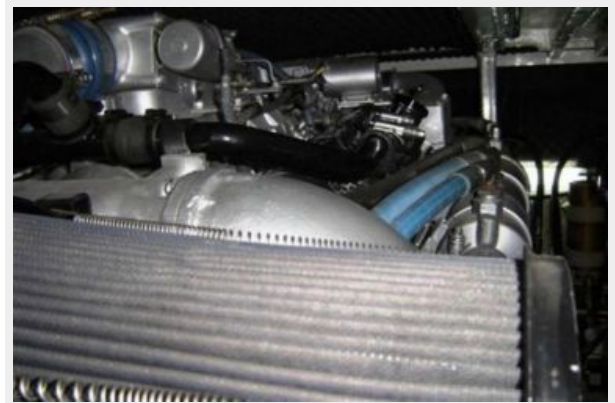
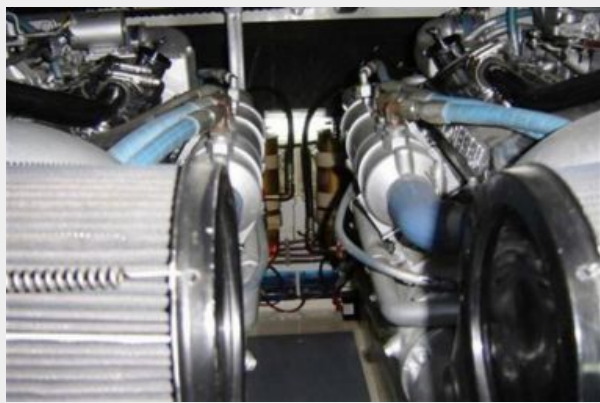
ФОТОГРАФИИ











КОНТАКТЫ

Андрей Шестаков (Andrey Shestakov) – ведущий яхтенный брокер отдела продаж яхт и судов компании Shestakov Yacht Sales Inc. Официальный представитель Shestakov Yacht Sales Inc. для русскоговорящих клиентов в центральном офисе компании в Майами/Форт Лодердейл/Флорида/США.

Контактная информация

Email: andrey@shestakovyachtsales.com

Web: shestakovyachtsales.com

Телефоны

Краснодарский край: **+7(918)465-66-44**

США, Майами, Флорида: **+1(954)274-4435**

Время работы

Понедельник – Суббота: **9:00 - 21:00**
EDT

Воскресенье: **Закрито**

Адрес



Harbour Towne Marina, 850 NE 3rd St,
STE 213, Dania, FL 33004