

OISEAU DE FEU — CAMPER & NICHOLSONS



Builder: CAMPER & NICHOLSONS

Year Built: 1937

Model: Cruising Sailboat

Price: PRICE ON APPLICATION

Location: France

LOA: 68' 0" (20.73m)

Beam: 13' 0" (3.96m)

Min Draft: 9' 9" (2.97m)

Our experienced yacht broker, Andrey Shestakov, will help you choose and buy a yacht that best suits your needs OISEAU DE FEU — CAMPER & NICHOLSONS from our catalogue. Presently, at Shestakov Yacht Sales Inc., we have a wide variety of yachts available on our sale's list. We also work in close contact with all the big yacht manufacturers from all over the world.

If you would like to buy a yacht OISEAU DE FEU — CAMPER & NICHOLSONS or would like help answering any questions concerning purchasing, selling or chartering a yacht, please call +1(954)274-4435

TABLE OF CONTENTS

TABLE OF CONTENTS	2
SPECIFICATIONS	3
Overview	3
Basic Information	3
Dimensions	3
Speed, Capacities and Weight	3
Accommodations	3
Hull and Deck Information	4
Engine Information	4
DETAILED INFORMATION	5
SPECIFICATION	5
Exclusions	11
Disclaimer	12
PHOTOS	13
CONTACTS	22
Contact details	22
Telephones	22
Office hours	22
Address	22

SPECIFICATIONS

Overview

Never to be repeated from C&N in 1937 and restored to her original plans in 1983. She is now an historic monument as well as a stunning sailing yacht.

Basic Information

Category: Cruising Sailboat

Model Year: 1937

Year Built: 1937

Refit Year: 1983

Refit Type: Restored to her original plans. Further works completed 1991-1992 & 2008-09.

Country: France

Dimensions

LOA: 68' 0" (20.73m)

LWL: 48' 4" (14.73m)

Beam: 13' 0" (3.96m)

Min Draft: 9' 9" (2.97m)

Speed, Capacities and Weight

Displacement: 83775.65956 Pounds

Water Capacity: 158.5032312 Gallons

Fuel Capacity: 171.7118338 Gallons

Accommodations

Total Cabins: 4

Total Berths: 8

Total Heads: 3

Crew Berths: 2

Hull and Deck Information

Hull Material: Wood

Deck Material: Teak

Hull Designer: Chales E. Nicholson

Engine Information

Engines: 1

Manufacturer: Yanmar

Engine Type: Inboard

Fuel Type: Diesel

DETAILED INFORMATION

SPECIFICATION

History:

OISEAU DE FEU was launched as FIREBIRD X for the commodore of the Royal Ocean Racing Club, Ralph Hawks. The commission was inspired by the International 12 metre class, but the design also had to be comfortable enough for high seas racing and fast cruising.

After World War 2 she was converted into a yawl and carried on racing until the 1950s.

In 1963 she hoisted the French flag and changed her name to FLAME II, later becoming VINDILIS II. The yacht was renamed OISEAU DE FEU in 1970.

After sustaining damage in 1983 she was given a refit in St Malo. This was overseen by naval architect Guy Ribadeau-Dumas, who restored her to her original condition using the original plans found at the Museum of London.

The French authorities then classified her as an historic monument, and she was made available for charter to anyone wishing to take part in the main vintage yacht regattas.

Construction:

RCD Status: Our understanding is that the yacht is exempt from the essential safety requirements of Directive 94/25EC (Recreational Craft Directive) as she was built and placed into use within the EU prior to 1998.

Hull, Deck & Superstructure Construction:

- Moderate overhang, huge draft and a deep, strong V-shaped hull.

- Interior in oak with steel reinforced chain plates.
- Frames in steel and acacia.
- Teak carved planking; teak superstructure.
- Teak laid deck.

Machinery:

Engine & Gearboxes:

- 1 x Yanmar 110hp.

Maintenance & Performance:

- Engine Hours: Approximately 7000.
- Consumption: 7 litres per hour.

Propulsion & Steering:

- Shaft drive.
- Folding propeller.

Electrical Systems:

Battery Banks:

- 12 x 6v/345ah service batteries.
- 1 x 12v engine battery.

Battery Chargers:

- 1 x Battery charger.

Alternators:

- 2 x Alternators for service batteries.
- 1 x Alternator for engine batteries.

Shore Power:

- 220v system.

Other Electrical:

- 1 x 12v/220v inverter.

Plumbing Systems:*Fresh Water & Water Heating System:*

- Calorifier from main engine with 220v immersion heater.

Watermaker:

- Desalator watermaker 60 litres per hour.

Bilge Pumps:

- 2 x Electric bilge pumps.
- 1 x Bilge pump by engine.
- 1 x Manual bilge pump

Tankage:

Fuel:

- Total capacity of 650 litres (142 gallons).

Fresh water:

- Total capacity of 600 litres (131 gallons).

Greywater Holding Tanks:

- 2 x Holding tanks.

Navigation Equipment:

- Plastimo compass.
- Simrad RD 68 VHF.
- GPS linked to B&G central sailing instrumentation.
- B&G sailing instrumentation.
- B&G autopilot.
- Barometer.
- Computer with 'Seapro' navigation plus charting.

Domestic Equipment:*Galley:*

- Frigomatic fridge plus freezer.
- Gas oven with 2 x burners.
- 2 x Stainless steel sinks.

Lighting:

- Navigation lights on the mast.
- 12v lighting in the accommodation.

Accommodation:

Summary of Accommodation:

- Owner's cabin with 1 x double berth and ensuite heads.
- Guest cabin with 1 x double berth and access to guest head.
- Guest cabin with 2 x single berths and access to guest head.
- Crew cabin with 1 x double berth and ensuite heads.
- Doghouse with 2 x single berths.

With good headroom and numerous openings which provide natural light, the saloon is focused around a polished mahogany table. Together with an Alcantara banquette, small library and photographs in sepia of past sailing events, the interior exudes a unique atmosphere.

The mast displays the gold coin used during the christening of the yacht.

Forward is the owner's cabin with its double berth, a compass suspended at full beam and ensuite head with a shower and basin.

Near the stern there is a galley which has been modernized with a refrigerator, freezer, 2-burner cooker and oven.

To starboard there is a guest cabin with two bunk berths, and aft a third cabin with a double berth.

The crew has a separate cabin forward.

Deck Equipment:

Rig:

- Bermudian cutter.
- All standing rigging new in 2004; spruce mast and boom.
- The running rigging is regularly updated.

Winches:

- 10 x Barient winches (4 x Electric).

Cockpit:

- 2 x 32.
- 2 x 28+.
- 2 x 37 electric 2 speed.

Mast:

- 2 x 27-48.
- 2 x 28+ electric 2 speed.

Sails:

- 3 x Main sails (1 x is fully battened).
 - o Hood (2010) for racing.
 - o Elvström (2004).
 - o Tonnerre (before 2004).

- 3 x Spinnakers. Asymetrics
- o Europsail (2006).
- o 2 Elvström (before 2004).
- 1 x Snuffer.
- 2 x Genoa.
- o Europsail (2009).
- o Elvström (before 2004).
- 2 x Foresail. Elvström before 2004.
- 2 x Yankees. Elvström before 2004.

Anchoring & Mooring Equipment:

- Windlass Lewmar 1500 W with 100m of chain.
- Second anchor plus 25m chain.
- Floating anchor.

Safety Equipment:

- 15 x Life jackets.
- Life belts plus life line.
- 10 person liferaft.
- Distress rocket.
- Fire extinguishers.

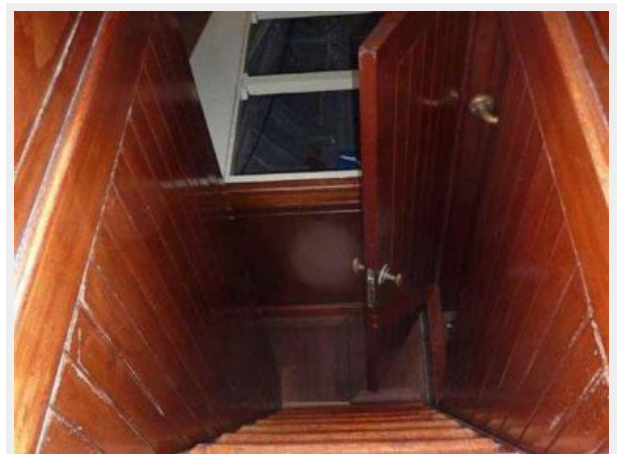
Exclusions

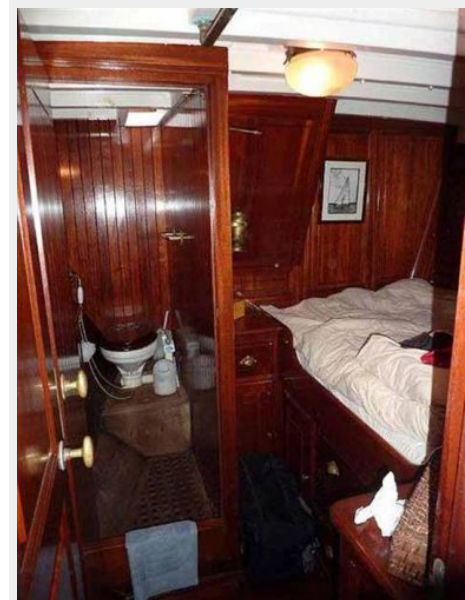
Owner's personal belongings.

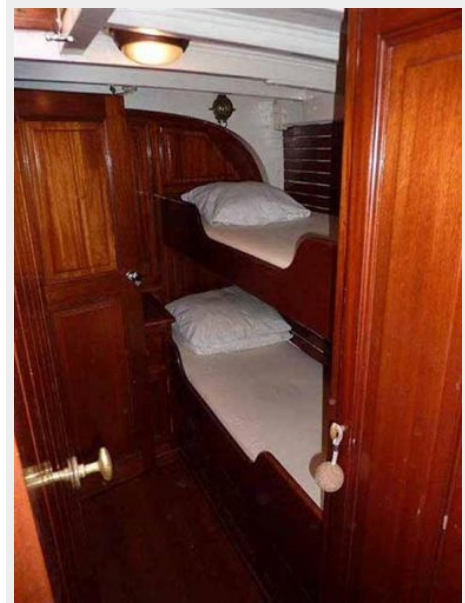
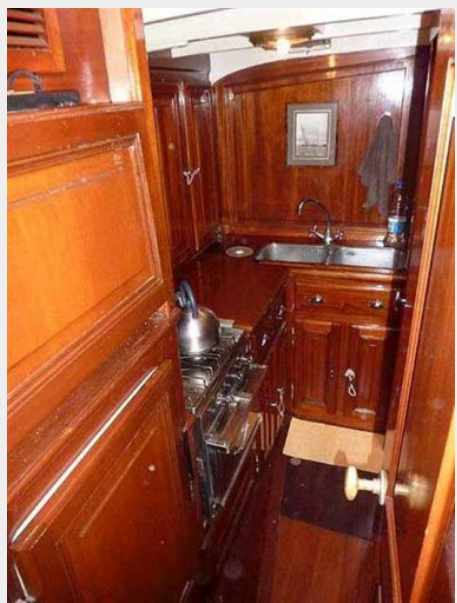
Disclaimer

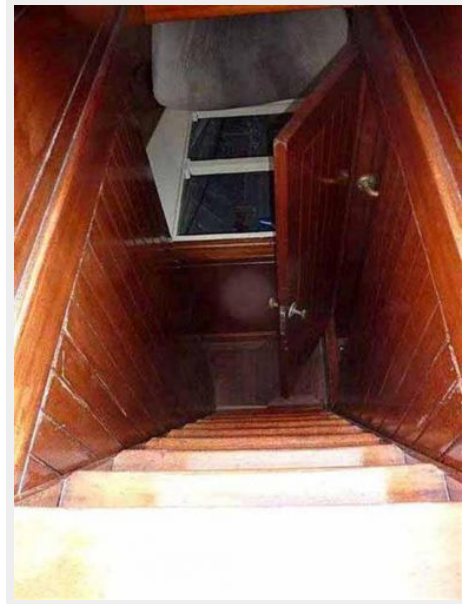
The Company offers the details of this vessel or yacht in good faith but cannot guarantee or warrant the accuracy of this information nor warrant the condition of the vessel. A buyer should instruct his representatives, agents, or his surveyors, to investigate such details as the buyer desires validated. This vessel or yacht is offered subject to prior sale, price change, or withdrawal without notice.

PHOTOS

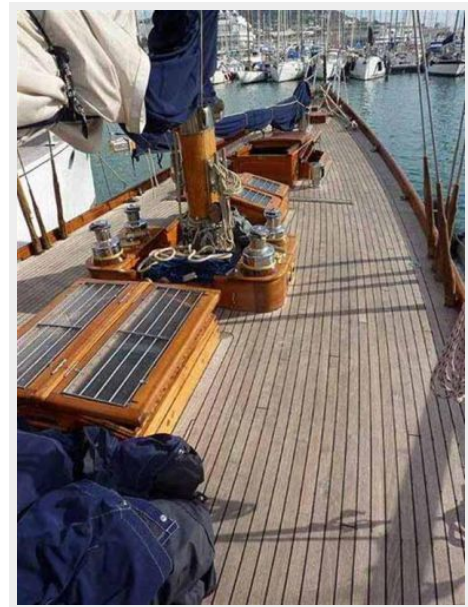
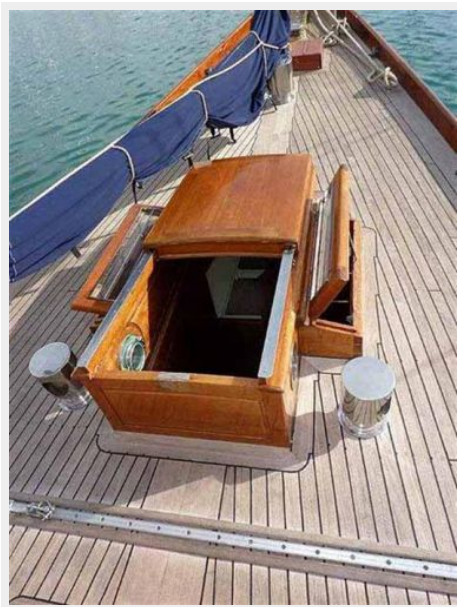
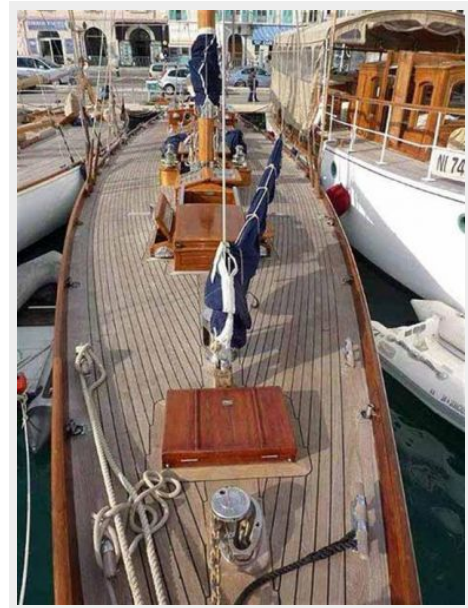
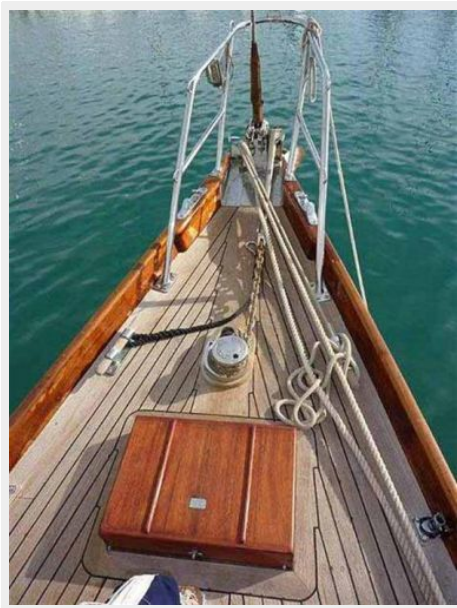


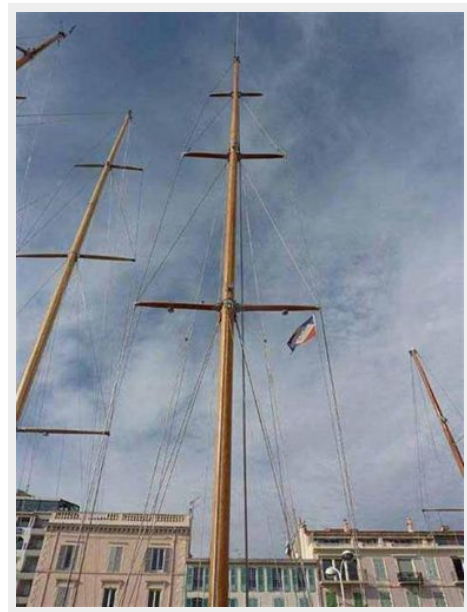
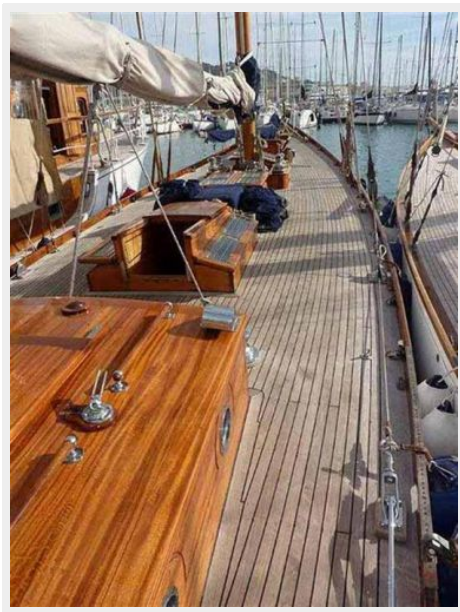


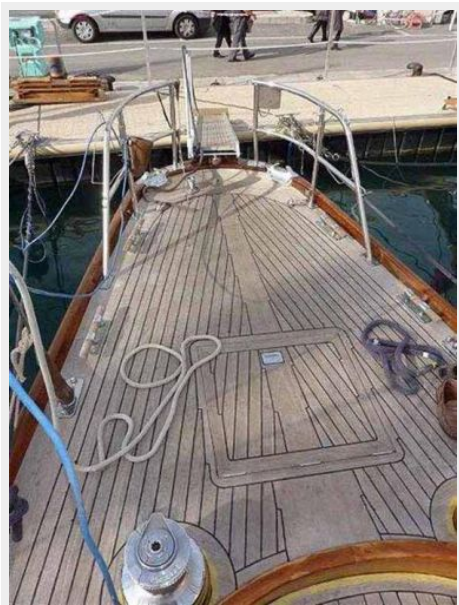
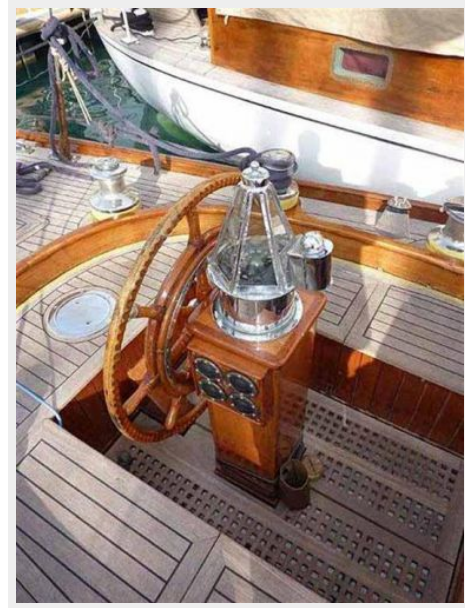


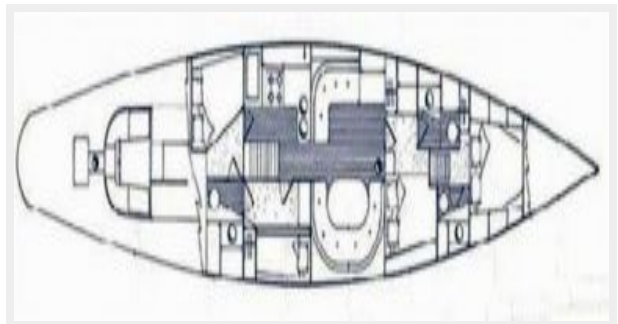
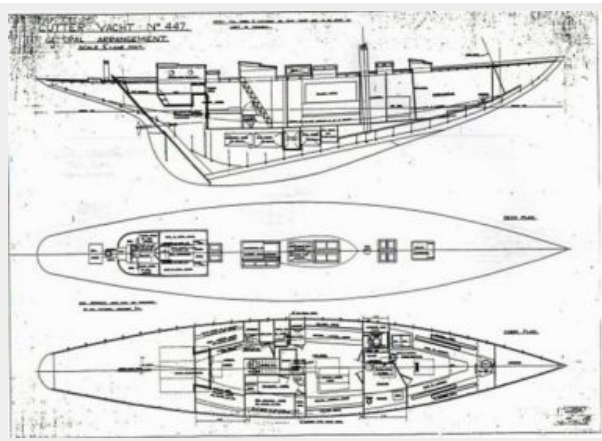












CONTACTS

Andrey Shestakov, leading yacht broker of the sales department of Shestakov Yacht Sales Inc. Shestakov Yacht Sales Inc., the official representative of the Miami/Fort Lauderdale FL headquarters.

Contact details

Email: andrey@shestakovyachtsales.com

Web: shestakovyachtsales.com/en/

Telephones

USA: +1(954)274-4435

Office hours

Monday – Saturday: **9:00 - 21:00** EDT

Sunday: **closed**

Address



Harbour Towne Marina, 850 NE 3rd St,
STE 213, Dania, FL 33004