

## NATALITA III — AZIMUT



**Судостроитель:** [AZIMUT](#)

**Год постройки:** 1996

**Модель:** Моторная яхта

**Цена:** **ЦЕНА ЯХТЫ ПО ЗАПРОСУ**

**Местонахождение:** United States

**Длина общая:** 100' 0" (30.48m)

**Ширина:** 21' 7" (6.58m)

**Мин. осадка:** 6' 5" (1.96m)

**Макс. осадка:** 6' 5" (1.96m)

**Крейс. скорость:** 20 Kts. (23 MPH)

**Макс. скорость:** 25 Kts. (29 MPH)

Купить **NATALITA III — AZIMUT** а также выбрать подходящую вам яхту из нашего каталога яхт вам поможет опытный яхтенный брокер Андрей Шестаков. На сегодняшний день компания **Shestakov Yacht Sales Inc.** имеет большое количество яхт в собственном списке продаж, а также тесно сотрудничает со всеми крупными яхтенными производителями по всему миру.

Для того чтобы купить яхту **NATALITA III — AZIMUT** а также проконсультироваться по любому вопросу связанному с покупкой, продажей, чартером яхт позвоните по телефону **+7(918)465-66-44**.

# ОГЛАВЛЕНИЕ

ОГЛАВЛЕНИЕ	2
ХАРАКТЕРИСТИКИ	4
Основная информация	4
Размеры	4
Скорость, вместимость и масса	4
Размещение	4
Корпус и палуба	4
Информация о двигателе	5
ПОДРОБНОЕ ОПИСАНИЕ	6
Accommodations	6
Salon	6
Dining Salon	7
Galley and Laundry	7
Master Stateroom	7
Master Head	8
VIP Stateroom	8
VIP Head	8
Port & Starboard Guest Staterooms	9
Port Guest Stateroom Head	9
Starboard Guest Stateroom Head	9
Crew Quarters	9
Pilothouse	10
Flybridge	10
Aft deck	11
Topsides	11
Superstructure	11
Engine /Mechanical Equipment	12
Electrical Equipment	12

Exclusions	13
Исключения	13
Отказ от ответственности	13
<b>ФОТОГРАФИИ</b>	<b>14</b>
Aft Deck	14
Main Salon	14
Main Salon	14
Formal Dining Area	14
Master Stateroom	14
Master Stateroom	14
Master Bath	15
VIP Stateroom	15
Twin Guest Stateroom	15
Twin Guest Stateroom	15
Upper Deck - Jacuzzi	15
Upper Deck	15
Upper Deck - BBQ	16
Upper Helm and Seating	16
Engine Room	16
Pilothouse	16
Garage / Swim Platform	16
Galley	16
<b>КОНТАКТЫ</b>	<b>17</b>
Контактная информация	17
Телефоны	17
Время работы	17
Адрес	17

# ХАРАКТЕРИСТИКИ

## Основная информация

Тип судна: Моторная яхта

Модельный год: 1996

Год постройки: 1996

Страна: United States

Верх: 2353

Открытая палуба мостика: Да

Кубрик: Да

## Размеры

Длина общая: 100' 0" (30.48m)

Ширина: 21' 7" (6.58m)

Мин. осадка: 6' 5" (1.96m)

Макс. осадка: 6' 5" (1.96m)

## Скорость, вместимость и масса

Крейс. скорость: 20 Kts. (23 MPH)

Дальность на крейсерской скорости:  
1300

Макс. скорость: 25 Kts. (29 MPH)

Водоизмещение: 221000 Pounds

Вместимость воды: 528 Gallons

Объем топливного бака: 3646 Gallons

## Размещение

Всего кают: 4

Спальные места: 8

Каюты экипажа: 2

Спальных мест экипажа: 4

## Корпус и палуба

Материал корпуса: Fiberglass

## Информация о двигателе

---

**Двигатели:** 2

**Производитель:** MTU

**Модель:** 16V 2000

**Тип двигателя:** Inboard

**Тип топлива:** Diesel

---

# ПОДРОБНОЕ ОПИСАНИЕ

---

## Accommodations

---

This gorgeous vessel is ready for use by her next owner. She has four staterooms plus 2 crew staterooms, each with ensuite head. A formal dining room is forward of the salon followed by the galley with crew access forward. Master has king berth, VIP has queen berth, and the two guest staterooms each have twin berths.

## Salon

---

Teak planking on aft section with carpet over main deck of salon Sliding door entry from aft deck and hinged door from dining salon Varnished wood paneling and cabinets with padded vinyl overhead panels (8) lights recessed into overhead into overhead at aft section (16) lights recessed into overhead in main section Fixed side windows with drapes and blinds (new blinds 2008) Bar with stainless steel foot bar, refrigerator and ice maker under, marble countertop Storage locker, outboard, with roll top, marble counter, stainless steel sink, glass and bottle storage, air conditioning control panel Cabinet opposite bar with 3 shelves and 2 doors; air conditioning control panel Cabinet with 2 doors with burled wood tops and air conditioning unit at forward end with table lamp on each side Settee with table at each end Cabinet with 4 drawers and cabinets at each end Intercom telephone Mirrors on forward bulkhead Coffee table in center with burled wood top, divides into 3 separate units Head compartment with marble sole, marble countertop, 3 lights recessed in overhead, lacquer paneled overhead and bulkheads, porcelain sink, mirrored outboard panel above vanity, storage cabinets under vanity, marine head with hinged door, marble sole, recessed lights in overhead, exhaust fans overhead Smoke/fire detector on port aft overhead

Reupholstered couch cushions (2009)

Entertainment Equipment:

Vizio flat screen TV

Denon AL24 receiver

Sony 400 disc CD changer

Sony Blu Ray DVD player

Ipod docking station

---

## Dining Salon

---

Forward of main salon, entry via main salon through forward companionway and port forward from galley Carpeted sole Padded vinyl overhead Varnished wood dining table with 8 chairs (reupholstered 2008) (6) lights recessed in overhead (6) lights recessed in drop panel over dining table Cabinets for China and glass storage China cabinet Fixed side windows with blinds and drapes Smoke/fire detector in overhead (2) Sony speakers in overhead Air conditioning controls Padded fabric on forward bulkhead with oil painting Intercom telephone

---

## Galley and Laundry

---

Forward of dining salon with entry door from dining salon and through watertight door to port deck Lacquer-paneled overhead and bulkheads (8) recessed lights in overhead Molded table with bench seat with storage under seat Marble top L-shaped counter with cabinets over and under Filtered exhaust fan above stovetop Double stainless steel sink with cabinets under (5) drawers alongside oven Security system monitor for aft deck camera Circuit breaker panel in port locker Air conditioning control panel (4) steps down to crew quarters with 3 courtesy lights Smoke/fire detector in overhead Fixed side window with blinds Intercom telephone Custom refrigeration

Black tile flooring (2009)

Whirlpool Heavy Duty Thin Twin Washer/Dryer (2009)

Whirlpool Accubake system oven (2009)

Kitchenaid glass stovetop (2009)

Whirlpool Gold Quiet Partner dishwasher (2009)

Additional:

Beverage fridge installed in garage in 2009

50 lb./day icemaker installed in garage in 2010

Beverage fridge installed on flybridge in 2010

---

## Master Stateroom

---

Entry via companionway door, mirror port and starboard of door Carpet, curtains, bedding and

pillows (updated 2008) Padded vinyl overhead (9) recessed lights in overhead Rope lighting under berth and port settee Varnished wood paneling on bulkheads Fabric-covered padded headboard Queen size berth with 4 drawers under (2) nightstands with 3 drawers, table lamps, intercom telephone Vanity and cabinets with stool and cosmetic lift-top vanity (2) port and (2) starboard opening ports with blinds Stark safe in starboard cabinets Settee with storage under Walk-in closet

Bose stereo / DVD player

Sharp flat screen TV

Ipod docking station

---

## Master Head

---

Marbled tiled sole Marble top vanity with cabinets, drawers under, (2) porcelain sinks Mirrored bulkhead above vanity Lockers, inboard and outboard of vanity Electric head (2) opening ports with blinds Lacquer-paneled bulkheads and overhead (3) lights recessed in overhead (4) lights in soffit above vanity Shower stall with Plexiglas door, teak grating, (7) fixed showerheads, handheld showerhead (2) Plexiglas towel bars Valves under vanity for toilet pressure switch, hot and cold water

---

## VIP Stateroom

---

Entry via forward end of companionway Carpet sole Padded vinyl overhead (6) recessed lights in overhead (2) lights recessed in soffit over berth Double size berth with 4 drawers and storage under Padded headboard (2) nightstands with 2 drawers, table lamps, intercom telephone Vanity and cabinets with stool and cosmetic lift-top vanity Hanging locker with light, circuit breaker panel outboard of locker Port and starboard opening ports with blinds Air conditioning control panel Settee with storage under cabinets at each end Smoke detector overhead Stereo speakers overhead Gray water and black water discharge pumps and bilge suction line under sole Air conditioning unit under berth

Curtains, bedding and pillows (updated 2008)

Bose stereo / DVD player

Magnavox flat screen TV - starboard side

---

## VIP Head

---

Marbled tiled sole Lacquer-paneled bulkheads and overhead (4) lights recessed in overhead L-shaped marble top vanity with porcelain sink, cabinets under Opening ports with blinds Mirror on



aft bulkhead above vanity Electric head, outboard, with storage lockers above Shower stall with Plexiglas door, teak grating, handheld showerhead, recessed light overhead Overhead exhaust fan

---

## Port & Starboard Guest Staterooms

---

Entry via door from lower companionway Carpet sole Padded vinyl overhead (8) recessed lights in overhead Smoke detector in overhead Port and starboard single berth with 2 drawers under Rope lighting under berths Padded head and side boards Night table with 3 drawers and lamp between berths Intercom telephone Hanging locker with light Circuit breaker control panel, outboard of hanging locker Gray water and black water discharge panels Marked discharge valves Air conditioning unit with control panel

Curtains, bedding and pillows (updated 2008)

---

## Port Guest Stateroom Head

---

Lacquer-paneled bulkheads and overhead Marbled tiled sole Marble top vanity with porcelain sink and cabinets under Mirror on aft bulkhead above vanity Electric head with storage cabinets Opening port with blinds (3) lights recessed in overhead Exhaust fan in overhead Plexiglas towel bar Open shelves, inboard of vanity Shower stall with Plexiglass door, teak grating, handheld showerhead, recessed light overhead

---

## Starboard Guest Stateroom Head

---

Lacquer-paneled bulkheads and overhead Marbled tiled sole Marble top vanity with porcelain sink and cabinets under Mirror on cabinet over sink Electric head with storage cabinets Opening port with blinds (4) lights recessed in overhead (2) Plexiglas towel bars Open shelves, inboard of vanity Shower stall with Plexiglas door, teak grating, handheld showerhead, opening port with deadlight, recessed light overhead

---

## Crew Quarters

---

(4) steps down and forward of galley (2) lights recessed in companionway overhead Hatch with folding stainless steel ladder, forward for access to foredeck Lockers Vinyl sole Lacquer-paneled bulkheads and overhead Stateroom with upper and lower berths, hanging lockers, (2) drawers, (3) lights recessed in padded vinyl overhead, reading lights at each berth, intercom telephone, Cruisair controls, drawers and storage under lower berths, opening part with curtain above berths Head compartments, forward of crew cabins, with access from cabin, handheld shower unit with overhead shower curtain, electric head, marble top vanity with sink and storage cabinets under, outboard storage locker, teak grating on deck with shower drain, (2) light and (1) blower recessed

in overhead lights recessed in overhead, intercom telephone, storage Smoke/fire detector in overhead Cabin, port, with upper and lower berth, hanging locker with safe, (2) drawers, aft, reading light at each berth, (2) drawers and storage under lower berth; head forward, with vinyl tiled sole, marble top vanity with porcelain sink, cabinet under, (2) lights recessed in overhead, intercom telephone, storage locker, outboard of electric head. Shower stall with teak grating, Plexiglas door, overhead light, hand-held shower unit, mirror on forward bulkhead above vanity, smoke detector in overhead

## Pilothouse

Teak deck Vinyl overhead (9) lights recessed overhead (5) teak steps down to main deck with (3) courtesy lights (5) teak steps up to fly bridge with (3) courtesy lights Burlwood countertops, varnished wood paneling, padded vinyl countertop below windshields Fixed windows (3) fixed windshields Settee, aft port, with leather cushions and stainless steel foot rest Helm seat with leather cushions on stainless steel pedestal with footrest Plexiglass signal flag locker (5) cabinet doors in aft bulkhead Chart table, port, with Plexiglass top, sliding chart drawer MTU electronic engine controls Electronics locker on helm console with: Cruisair SMX II controls, Skanti TRP-7000 SSB radio, Furuno FCV-582L color video sounder, Video engine room monitor, Urmet Intercom, White Star compass, Kobelt rudder angle indicator, Logic relative wind speed and direction indicator, Trim tab indicator, Furuno FAP-330 autopilot, Rayline search light control, Digital Marine Electronics Northstar 6100i GPS plotter, ICOM IC-M604 VHF radio, Anschutz Gyro repeater, HYSY bow thruster control, Furuno 72-mile color radar Engine instruments: oil pressure gauge, gear oil pressure, engine water temperature, gear oil temperature, tachometer for port and starboard engine Water tank gauge Fuel level gauge Chart table, port aft A.C./D.C. distribution panel, port of helm console, with switches for: navigation lights, black water, gray water and bilge water pumps, engine room ventilation, auxiliary services, A.C. volt and ammeters, house and starting battery meters, fire alarms display and controls Switch panel at helm console for port and starboard windlasses, washer pump, auxiliary controls, steering pump, wiper controls, port and starboard main engine alarm and controls, intercom controls, port and starboard flap controls

## Flybridge

Molded fiberglass with welded stainless steel railing, vinyl-covered cushions on deck over molded deck gratings Molded fiberglass Jacuzzi Deck scupper, port and starboard Stern light Stainless steel ensign staff Molded fiberglass stairway with teak treads to stainless steel railing to main deck Weather hatch stowed alongside safety railing (5) courtesy lights in aft deck stairway Security camera on aft deck Entry via pilothouse through welded stainless steel glass door/hatch unit Molded fiberglass decks with non-skid surface Aluminum framed Plexiglas windscreen Molded fiberglass console, port with vinyl cover Stainless steel spoke wood-rimmed steering wheel Port and starboard engine gauges for: engine, oil pressure, gear oil, engine water temperature, tachometers Furuno FAP-330 autopilot Bow thruster controls Rayline searchlight

control Rudder angle indicator Trim level gauge Zenith compass VHF remote Intercom horn 3 courtesy lights Deck scupper, port and starboard MTU electronic controls Control panel with switches and indicators for: port and starboard windlass, washer pump. auxiliary controls, steering pump, port and starboard main engine alarm and controls, intercom controls, port and starboard flap control Molded fiberglass benchseat with cushion at helm console and storage under seat

Sunbrella cushions (new 2008)

Exterior deck carpet (new 2008)

Teak tables on stainless pedestals (new 2008)

Beverage refrigerator (new 2010)

Bimini top (new 2011)

## Aft deck

---

Teak plank over molded fiberglass decks Watertight hatch to lazarette Gate, centerline aft Fire station, aft to starboard of gate Passarelle control panel, port of transom gate Dockside water inlet and washdown connections in fire station locker CO2 manual discharge valve, starboard aft Port and starboard deck capstans with foot switches Welded stainless steel bit, port and starboard Deck scupper, port and starboard aft outboard corners Shore side power inlets, port of transom bulwark with 100A/250V inlet and 50A/250V inlet Teak table on stainless steel pedestal (13) lights recessed into overhead with (2) stereo speakers

## Topsides

---

Anchor chafe plate with hawse pipes Stainless steel portholes, (6) port and (9) starboard Stainless steel spring line hawsepipes with bit, port and starboard Stainless steel roller chocks in bulwarks on port and starboard aft corner (5) steps with teak treads molded into transom with removable hand rails Transom platform molded into hull Hand-held shower unit in recessed locker on transom, starboard

## Superstructure

---

Molded fiberglass with foam core, molded white gelcoat exterior Courtesy lights for fore and side decks Stainless steel hand rails and opening hatch into forward cabin trunk Port and starboard storage locker in forward cabin trunk Port and starboard fire station lockers with hose and nozzle Opening port on port and starboard forward cabin trunk Watertight doors, port, providing access to galley and engine room Watertight door, starboard, providing access to main salon Fuel fill deck plates in Plexiglas door lockers on cabin sides, (2) port and (2) starboard Water fill deck

plate, port of cabin Fixed tempered glass window, port and starboard of cabin structures Courtesy lights under bridge deck overhang, (7) port and (7) starboard Storage locker in starboard aft section of house structure Storage locker under aft stairway to bridge deck

## Engine /Mechanical Equipment

Access via main deck port aft Watertight door and welded aluminum ladder Welded stainless steel dry risers with insulated jackets connecting to water injected exhaust pipe thru vessels bottom Low rpm by-pass with valve through topsides Sea water intakes for main engines under deck plates in center bilge with bronze thru hulls and gate valves and strainers in center bilge, forward, with manifold for air conditioning, (2) generators, head pump, fire pump and watermaker Vernalift fiberglass mufflers with double-clamped hose and thru hull with gate valve, port and starboard for generators (2) 220-volt bilge/fire pumps, port forward with suction manifold Manual emergency bilge pump, port (6) dual-tube fluorescent lights overhead Xintex fuel vapor monitor on aft bulkhead (4) Cruisair units, port outboard, with circuit breaker panel

Cruisair - port side (3 of 4 units are new in 2011)

Cruisair - stbd side (2 of 4 units are new in 2010-11)

New air handlers installed in galley and crew quarters

(3) refrigeration compressors, port Dual Racor fuel filters for main engines (new 2014) Hydraulic steering pump and manifold, port aft 220-volt exhaust fan, aft Intake fan, forward Fuel level eye-level gauge, port and starboard Port and starboard fuel tank aft, with cross-connect to equalize Fuel manifold, centerline on aft bulkhead, with 24-volt and manual fuel transfer pumps, pneumatic emergency shut-off valves (12) 2-volt starting batteries in covered box, centerline under deck plates (4) Cruisair air conditioning, condensing units, starboard Electric control panel, port, to distribute 220 volts A.C. and 24 volts D.C. Fuel management gauges and breakers in starboard panel Main and service battery switches in starboard panel Bow Thruster hydraulic pump PTO on starboard transmission (2) 220-volt air conditioning seawater pumps with manifolds, starboard forward (2) 24-volt Mastervolt battery chargers mounted starboard forward 110/220 volt shore power transformer Pneumatic shutters on all air intakes, actuated by fire detection system (3) 12-volt service batteries in covered boxed on generator platform Bow thruster hydraulic oil tank and filter on forward bulkhead 220-volt water pressure pump under generators with filter 24-volt sanitary pump under generators Racor generator fuel filters under generator platform Video camera on overhead Main engine instrument panels on overhead above each engine with start/stop switches, tachometers, gear box, engine oil temperature and pressure gauges, water temperature gauges Numerous mechanical upgrades (2014)

## Electrical Equipment

45 kw Onan generator with sound shield and hour meter Hours: stbd. 2032 as of March 2014 25

kw Onan generator with sound shield and hour meter (new injectors, belts, alternator in 2010)

Hours: port: 7508 as of March 2014

## **Exclusions**

---

Certain artwork and owner's personal effects are excluded.

## **Исключения**

---

При продаже яхты исключаются личные вещи владельца.

## **Отказ от ответственности**

---

Компания предоставляет описание судна или яхты добросовестно, но не может гарантировать точность этой информации, а также не ручается за техническое состояние. Покупатель должен проинструктировать своих агентов или оценщиков исследовать представленную информацию более подробно, по собственному желанию. Продажа судна или яхты, изменение цены или снятие с продажи будет происходить без предварительного уведомления.

# ФОТОГРАФИИ

**Aft Deck**



**Main Salon**



**Main Salon**



**Formal Dining Area**



**Master Stateroom**



**Master Stateroom**





**Master Bath**



**VIP Stateroom**



**Twin Guest Stateroom**



**Twin Guest Stateroom**



**Upper Deck - Jacuzzi**



**Upper Deck**



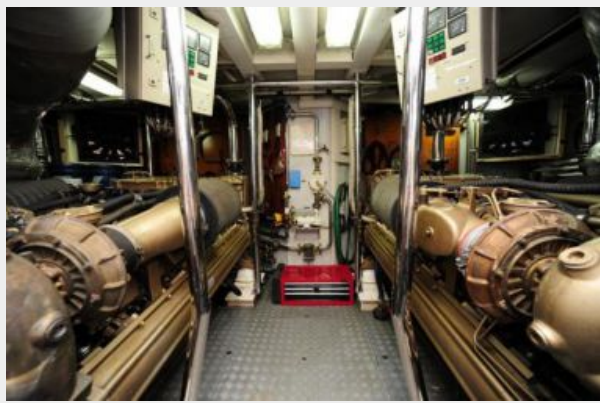
**Upper Deck - BBQ**



**Upper Helm and Seating**



**Engine Room**



**Pilothouse**



**Galley**



**Garage / Swim Platform**





# КОНТАКТЫ

---

Андрей Шестаков (Andrey Shestakov) – ведущий яхтенный брокер отдела продаж яхт и судов компании Shestakov Yacht Sales Inc. Официальный представитель Shestakov Yacht Sales Inc. для русскоговорящих клиентов в центральном офисе компании в Майами/Форт Лодердейл/Флорида/США.

## Контактная информация

---

Email: [andrey@shestakovyachtsales.com](mailto:andrey@shestakovyachtsales.com)

Web: [shestakovyachtsales.com](http://shestakovyachtsales.com)

## Телефоны

---

Краснодарский край: **+7(918)465-66-44**

США, Майами, Флорида: **+1(954)274-4435**

## Время работы

---

Понедельник – Суббота: **9:00 - 21:00**  
EDT

Воскресенье: **Закрито**

## Адрес

---



Harbour Towne Marina, 850 NE 3rd St,  
STE 213, Dania, FL 33004