

## SARSAPARILLA — SABRE YACHTS



**Судостроитель:** [SABRE YACHTS](#)

**Год постройки:** 2002

**Модель:** Крейсер

**Цена:** ЦЕНА ЯХТЫ ПО ЗАПРОСУ

**Местонахождение:** United States

**Длина общая:** 36' 0" (10.97m)

**Ширина:** 12' 6" (3.81m)

**Мин. осадка:** 3' 4" (1.02m)

**Крейс. скорость:** 18 Kts. (21 MPH)

**Макс. скорость:** 23 Kts. (26 MPH)

Купить **Sarsaparilla — SABRE YACHTS** а также выбрать подходящую вам яхту из нашего каталога яхт вам поможет опытный яхтенный брокер Андрей Шестаков. На сегодняшний день компания **Shestakov Yacht Sales Inc.** имеет большое количество яхт в собственном списке продаж, а также тесно сотрудничает со всеми крупными яхтенными производителями по всему миру.

Для того чтобы купить яхту **Sarsaparilla — SABRE YACHTS** а также проконсультироваться по любому вопросу связанному с покупкой, продажей, чартером яхт позвоните по телефону **+7(918)465-66-44**.

# ОГЛАВЛЕНИЕ

ОГЛАВЛЕНИЕ	2
ХАРАКТЕРИСТИКИ	5
Обзор	5
Основная информация	5
Размеры	5
Скорость, вместимость и масса	5
Размещение	5
Корпус и палуба	6
Информация о двигателе	6
ПОДРОБНОЕ ОПИСАНИЕ	7
Interior Layout	7
Galley	7
Salon	7
Master Stateroom	8
Guest Stateroom	8
Heads	8
Bridge/Helm	8
Deck Equipment	9
Electronics	9
Electrical System	9
Water System	10
Cockpit	10
Engine Room	10
Remarks	10
Исключения	11
Отказ от ответственности	11
ФОТОГРАФИИ	12
Galley, forward	12

Galley Sink	12
Galley Storage	12
Stove	12
Oven	12
Salon, starboard	12
Salon, port	13
Stereo	13
Master Stateroom	13
Master Stateroom AC control	13
Guest Stateroom V-Berth	13
Guest Stateroom Storage	13
V-Berth Storage	14
Master Stateroom Head	14
Master Stateroom Shower	14
Guest Head	14
Guest Head	14
Electrical Panel	14
Electrical Panel	15
Bridge Helm	15
Bridge Seating	15
Depth	15
Auto Pilot	15
Lower Helm	15
Lower Helm Electronics	16
Gen Set	16
Gen Set Hours	16
Starboard Engine	16
Starboard Engine Hours	16
Port Engine	16

---

Port Engine Hours	17
Battery Control Panel	17
Battery Control Panel	17
Tender	17
Aft Gate	17
Aft Cabin Entrance	17
Bridge, Forward	18
Washdown, Forward	18
Holding Tank	18
Rode & Chain	18
Windlass	18
Wire behind helm	18
<b>КОНТАКТЫ</b>	<b>19</b>
Контактная информация	19
Телефоны	19
Время работы	19
Адрес	19

# ХАРАКТЕРИСТИКИ

## Обзор

Sabre Trawler by Northshore

Flybridge w/Bimini Top

## Основная информация

Тип судна: Крейсер

Подкатегория: Downeast

Модельный год: 2002

Год постройки: 2002

Страна: United States

Открытая палуба мостика: Да

Кубрик: Да

## Размеры

Длина общая: 36' 0" (10.97m)

Ширина: 12' 6" (3.81m)

Мин. осадка: 3' 4" (1.02m)

Длина привального бруса: 36' 0"  
(10.97m)

## Скорость, вместимость и масса

Крейс. скорость: 18 Kts. (21 MPH)

Макс. скорость: 23 Kts. (26 MPH)

Водоизмещение: 20000 Pounds

Вместимость воды: 190 Gallons

Вместимость сточного бака: 30 Gallons

Объем топливного бака: 250 Gallons

## Размещение

Всего кают: 2

Всего коек: 2

Спальные места: 6

Всего ком. состава: 2

## Корпус и палуба

---

**Материал корпуса:** Fiberglass

**Комплектация корпуса:** Scheel

## Информация о двигателе

---

**Двигатели:** 2

**Производитель:** Yanmar

**Модель:** 6LYA

**Тип двигателя:** Inboard

**Тип топлива:** Diesel

---

# ПОДРОБНОЕ ОПИСАНИЕ

---

## Interior Layout

---

Sarsaparilla has a large salon with lower helm, galley and large settee. The settee turns into a double berth for overnight guests. There is a guest cabin forward with a V-berth and its own full head with shower. The owner's stateroom is aft with a walk around queen berth. There is a full head and stall shower located off the master stateroom.

There are two sliding opening doors, one on each side of the salon. The interior is finished in American Cherry wood. Windows are located fore, aft and both port and starboard.

## Galley

---

The galley is on the main deck in the salon. It is located on the port side and has plenty of counter top space along with storage space. There are large windows to let in plenty of light.

- AC/DC refrigerator
- AC/DC freezer (this is an option model)
- 3-burner SMEV propane stove w/oven below
- Stainless double galley sink
- Corian countertops

## Salon

---

There is a sliding door on each side of the salon, port and starboard. The highly finished American Cherry wood gives you the sense of a fine finished yacht. The U-shaped dinette has plenty of room for you and your guests and turns into a double berth for an added sleeping area.

The galley runs along the port side. Forward is the lower helm station with full electronics and controls along with great visibility and windshield wipers.

To port of the helm is a stand up navigation table with hinged top for chart and instrument storage. A nice feature is a slide-away panel that not only extends the chart table but, in conjunction with the bi-fold door, provides privacy for the forward guest cabin.

There is a separate zone for AC/heat along with opening windows and doors. There is a TV and stereo located in this area along with mini blinds for the sides and rear windows.

---

## Master Stateroom

---

The master stateroom has windows on three sides and a door aft to the cockpit. There is an abundance of hanging lockers and drawer space. There is a full head with stall shower off of the stateroom. There is a walk around berth for the owners.

The cabin gives one a sense of being on a larger vessel. The windows provide plenty of ventilation along with the AC/heat that is zoned in the stateroom. There are curtains and tracks on the port lights.

---

## Guest Stateroom

---

The guest stateroom, forward has a V-berth that has a filler cushion to turn it into a large queen berth. There is more than ample storage along with a full head and shower. The overhead hutch and port lights provide a lot of light and ventilation. There is also a separate zoned AC/heat unit.

There are curtains and tracks on the port lights.

---

## Heads

---

There are two head compartments on this vessel. Both have manual heads with sinks and showers. The one in the master stateroom has a stall shower. The guest head forward is a wet head shower. There is ample storage in both heads. Both head port lights have water resistant blinds.

---

## Bridge/Helm

---

There is a full helm on the bridge with tilt helm wheel along with full instruments for the engines and navigation. There is plenty of seating for the captain with two helm chairs and bench seating with a table for family and guests. There is also a stainless steel radar arch along with a Bimini top.



---

## Deck Equipment

---

- Side power bow thruster
- Radar arch (this folds down)
- Swim platform w/swim ladder
- Bow pulpit w/windlass
- Delta fast set anchor rode & chain
- Anchor wash down
- Fender holders
- Tender davids
- Prop shaft line cutters
- Cushions for bridge seating
- Docking lights
- Aft facing flood light
- 50-amp & 30-amp cords
- Lofrans electric anchor windlass w/remote at both helms
- Trim tabs
- Morse upper & lower engine controls
- Seastar hydraulic steering
- Port, starboard & transom boarding gates
- 10'8" 2003 Zodiac hard bottom tender

---

## Electronics

---

- (2) Plastimo offshore 135 series compasses
- (2) Raymarine Pathfinder RL70-C radars
- (2) Northstar 952X chart plotters
- Raymarine depth sounder
- (2) Simrad AP-22 autopilots
- (2) Simrad IS-15 rudder angle indicators
- (2) Standard VHF
- TV
- Sereo AM/FM

---

## Electrical System

---

- (10) 110-volt outlets throughout the vessel
- 50-amp & 30-amp inlets
- Mase 8kw gen set (333 hours)
- AC/DC electrical service panels with marked and designated breakers
- Battery condition monitors
- Ship/shore transfer switch
- Volt and amp meters
- 24,000 BTU 3-zone Marine Air AC/Head w/Digi set controls

---

## Water System

---

- Tank monitors
- Electric hot water heater w/exchange off port engine
- Pressurized water, hot and cold, with accumulator tanks
- Anchor wash-down
- Holding waste tank for heads w/12-volt macerator
- 12-Volt shower sump pump
- (3) bilge pumps

---

## Cockpit

---

This boat has a custom transom Cooney Simpson davit system with a R.I.B. Zodiac tender. There are two rod holders and a double fender holder. You can access the aft cabin through a door and hatch in the cockpit. There is a hot and cold hand held shower in the cockpit for rinsing down after a swim.

---

## Engine Room

---

- Twin 315 Yanmar Turbo charged fresh water engines
- Mase 8kw gen set
- Jabsco oil changing system
- PSS shaft seals
- Separ fuel water separators
- Fixed fire system

---

## Remarks

---

Current owner has had the vessel since 2003. This Sabre was built in England by Northshore after Sabre stopped producing this model. The vessel was then imported back into the United States. The first owner wanted a faster vessel and the current owner is ready to downsize.

This is a very well built boat that has a lot of accommodations for its size. It has low hours for a 2002 vessel and is in very good condition. This vessel is generally in fresh water and is only in salt water when it leaves the river.

Please call for an appointment to view this fine Sabre by Northshore trawler, it will not last long.

---

## Исключения

---

При продаже яхты исключаются личные вещи владельца.

---

## Отказ от ответственности

---

Компания предоставляет описание судна или яхты добросовестно, но не может гарантировать точность этой информации, а также не ручается за техническое состояние. Покупатель должен проинструктировать своих агентов или оценщиков исследовать представленную информацию более подробно, по собственному желанию. Продажа судна или яхты, изменение цены или снятие с продажи будет происходить без предварительного уведомления.

# ФОТОГРАФИИ

**Galley, forward**



**Galley Sink**



**Galley Storage**



**Stove**



**Oven**



**Salon, starboard**



**Salon, port**



**Stereo**



**Master Stateroom**



**Master Stateroom AC control**



**Guest Stateroom V-Berth**



**Guest Stateroom Storage**



**V-Berth Storage**



**Master Stateroom Head**



**Master Stateroom Shower**



**Guest Head**



**Guest Head**



**Electrical Panel**



**Electrical Panel**



**Bridge Helm**



**Bridge Seating**



**Depth**



**Auto Pilot**



**Lower Helm**



**Lower Helm Electronics**



**Gen Set**



**Gen Set Hours**



**Starboard Engine**



**Starboard Engine Hours**



**Port Engine**





**Port Engine Hours**



**Battery Control Panel**



**Battery Control Panel**



**Tender**



**Aft Gate**



**Aft Cabin Entrance**



**Bridge, Forward**



**Washdown, Forward**



**Holding Tank**



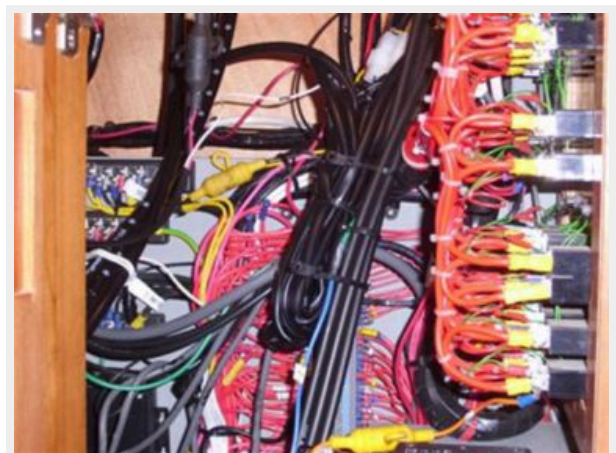
**Rode & Chain**



**Windlass**



**Wire behind helm**



# КОНТАКТЫ

---

Андрей Шестаков (Andrey Shestakov) – ведущий яхтенный брокер отдела продаж яхт и судов компании Shestakov Yacht Sales Inc. Официальный представитель Shestakov Yacht Sales Inc. для русскоговорящих клиентов в центральном офисе компании в Майами/Форт Лодердейл/Флорида/США.

## Контактная информация

---

Email: [andrey@shestakovyachtsales.com](mailto:andrey@shestakovyachtsales.com)

Web: [shestakovyachtsales.com](http://shestakovyachtsales.com)

## Телефоны

---

Краснодарский край: **+7(918)465-66-44**

США, Майами, Флорида: **+1(954)274-4435**

## Время работы

---

Понедельник – Суббота: **9:00 - 21:00**  
EDT

Воскресенье: **Закрито**

## Адрес

---



Harbour Towne Marina, 850 NE 3rd St,  
STE 213, Dania, FL 33004