

AT LAST — CARVER



Builder: CARVER

Year Built: 2005

Model: Cruiser

Price: PRICE ON APPLICATION

Location: United States

LOA: 36' 0" (10.97m)

Beam: 12' 9" (3.89m)

Min Draft: 37' 0" (11.28m)

Cruise Speed: 20 Kts. (23 MPH)

Max Speed: 28 Kts. (32 MPH)

Our experienced yacht broker, Andrey Shestakov, will help you choose and buy a yacht that best suits your needs **At Last — CARVER** from our catalogue. Presently, at Shestakov Yacht Sales Inc., we have a wide variety of yachts available on our sale's list. We also work in close contact with all the big yacht manufacturers from all over the world.

If you would like to buy a yacht **At Last — CARVER** or would like help answering any questions concerning purchasing, selling or chartering a yacht, please call **+1(954)274-4435**

TABLE OF CONTENTS

TABLE OF CONTENTS	2
SPECIFICATIONS	3
Overview	3
Basic Information	3
Dimensions	3
Speed, Capacities and Weight	3
Hull and Deck Information	3
Engine Information	4
DETAILED INFORMATION	5
Inside Equipment	5
Electrical Equipment	5
Electronics	5
Outside Equipment/Extras	5
Exclusions	5
Disclaimer	6
PHOTOS	7
CONTACTS	14
Contact details	14
Telephones	14
Office hours	14
Address	14

SPECIFICATIONS

Overview

PRICE REDUCED 2/7/2014 Cruise with all the amenities you would expect in a fine Yacht. Spacious salon, galley and stateroom. Entertain in comfort with room on the flybridge for guests! This is a great opportunity to get out and enjoy the waterways and relax and have fun!

Basic Information

Category: Cruiser

Sub Category: Express

Model Year: 2005

Year Built: 2005

Country: United States

Fly Bridge: Yes

Cockpit: Yes

Dimensions

LOA: 36' 0" (10.97m)

Beam: 12' 9" (3.89m)

Min Draft: 37' 0" (11.28m)

Speed, Capacities and Weight

Cruise Speed: 20 Kts. (23 MPH)

Max Speed: 28 Kts. (32 MPH)

Displacement: 19500 Pounds

Water Capacity: 75 Gallons

Holding Tank: 31 Gallons

Fuel Capacity: 250 Gallons

Hull and Deck Information

Hull Material: Fiberglass

Engine Information

Engines: 2

Manufacturer: Volvo

Model: 5.7 Litre GXI/ 185 hrs

Engine Type: Inboard

Fuel Type: Gas/Petrol

DETAILED INFORMATION

Inside Equipment

- Electric Bilge Pump
- Manual Bilge Pump
- Air Conditioning
- Heating
- Refrigerator
- Battery Charger
- Oven
- Microwave Oven
- Electric Head
- Hot Water
- Deep Freezer

Electrical Equipment

- Shore Power Inlet - Double 30 amp
- Generator - Kohler 110 volt - 198 hours

Electronics

- Depthsounder
- Plotter
- Radio
- CD Player
- VHF - Standard
- TV Set - (2)
- DVD Player
- Compass
- GPS - Garmin 5000

Outside Equipment/Extras

- Swimming Ladder
- Bimini Top

Exclusions

Owner's personal belongings.

Disclaimer

The Company offers the details of this vessel or yacht in good faith but cannot guarantee or warrant the accuracy of this information nor warrant the condition of the vessel. A buyer should instruct his representatives, agents, or his surveyors, to investigate such details as the buyer desires validated. This vessel or yacht is offered subject to prior sale, price change, or withdrawal without notice.

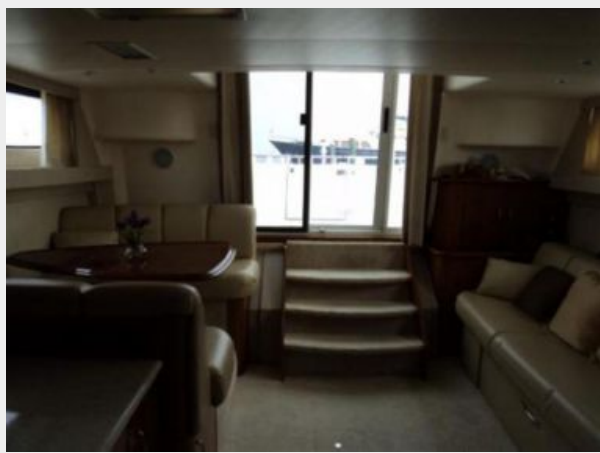
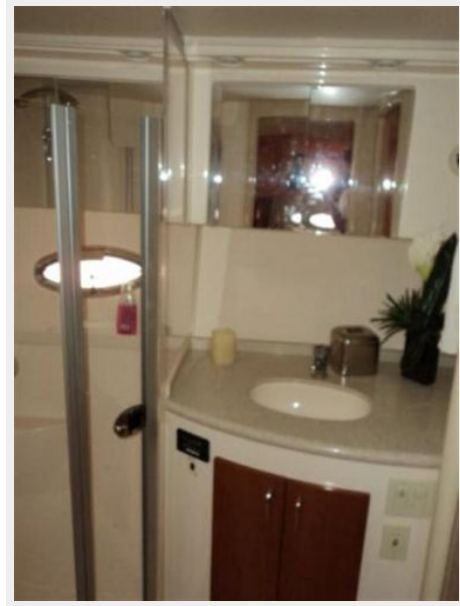
PHOTOS















CONTACTS

Andrey Shestakov, leading yacht broker of the sales department of Shestakov Yacht Sales Inc. Shestakov Yacht Sales Inc., the official representative of the Miami/Fort Lauderdale FL headquarters.

Contact details

Email: andrey@shestakovyachtsales.com

Web: shestakovyachtsales.com/en/

Telephones

USA: +1(954)274-4435

Office hours

Monday – Saturday: **9:00 - 21:00** EDT

Sunday: **closed**

Address



Harbour Towne Marina, 850 NE 3rd St,
STE 213, Dania, FL 33004