

HUSSAR — FRERS



Builder: FRERS

Year Built: 1984

Model: Cruising Sailboat

Price: PRICE ON APPLICATION

Location: United States

LOA: 55' 0" (16.77m)

Beam: 15' 0" (4.57m)

Max Draft: 7' 7" (2.29m)

Cruise Speed: 8 Kts. (9 MPH)

Our experienced yacht broker, Andrey Shestakov, will help you choose and buy a yacht that best suits your needs **HUSSAR — FRERS** from our catalogue. Presently, at Shestakov Yacht Sales Inc., we have a wide variety of yachts available on our sale's list. We also work in close contact with all the big yacht manufacturers from all over the world.

If you would like to buy a yacht **HUSSAR — FRERS** or would like help answering any questions concerning purchasing, selling or chartering a yacht, please call **+1(954)274-4435**

TABLE OF CONTENTS

TABLE OF CONTENTS	2
SPECIFICATIONS	3
Basic Information	3
Dimensions	3
Speed, Capacities and Weight	3
Accommodations	3
Hull and Deck Information	3
Engine Information	4
DETAILED INFORMATION	5
Accommodations Layout	5
Electronics and Navigational Equipment	5
Electrical System	5
Deck & Hull Equipment	6
Sails and Rigging	6
Engine /Mechanical Equipment	7
Remarks	7
Exclusions	8
Disclaimer	8
PHOTOS	9
CONTACTS	11
Contact details	11
Telephones	11
Office hours	11
Address	11

SPECIFICATIONS

Basic Information

Category: Cruising Sailboat

Model Year: 1984

Year Built: 1984

Country: United States

Coast Guard #: 937641Dover DE

Dimensions

LOA: 55' 0" (16.77m)

LOD: 55' 0" (16.77m)

Beam: 15' 0" (4.57m)

Max Draft: 7' 7" (2.29m)

MFG Length: 55' 0" (16.77m)

Speed, Capacities and Weight

Cruise Speed: 8 Kts. (9 MPH)

Displacement: 44000 Pounds

Water Capacity: 250 Gallons

Holding Tank: 4 Gallons

Fuel Capacity: 100 Gallons

Accommodations

Total Cabins: 3

Total Heads: 2

Hull and Deck Information

Hull Material: Aluminum

Deck Material: Aluminum

Hull Color: White

Hull Finish: Aluminum

Hull Designer: Frers

Engine Information

Engines: 1

Manufacturer: Westerbeke

Engine Type: Inboard

Fuel Type: Diesel

DETAILED INFORMATION

Accommodations Layout

The sail locker and storage is forward. Stepping aft there are port and starboard cabins with over and under bunks. Aft on port is the forward head. Stepping aft into the main salon with a large U-shaped settee/dinette to starboard and a settee to port. The galley is located aft on starboard with the navigation station across to port. Equipment includes:

- 3-burner Princess – LPG stove
- Refrigeration: Grunert AC 450 cold plate powered with 115 Volt AC and 12 Volt DC (2003)
- Litton Microwave
- Pressurized Water System
- Cockpit cooler
- System 9 water maker - partially disassembled

The companionway from the navigation station leads aft into the master cabin with a centerline queen size bunk and private head. Access to the deck is either from the main salon or from the aft cabin.

On deck the aft cockpit has the helm station, engine controls and navigational equipment.

Electronics and Navigational Equipment

- Three Ritchie Compasses
- Ray Marine Radar (2005)
- Northstar 800 Loran
- Standard Horizon 150 and a Magellan 1200XL GPS
- Raymarine C-120 (2005) Chart Plotter
- Standard Horizon Spectrum VHF Radios with RAM microphone
- Icom ICM 700 SSB
- Ockam and a Datamarine International Offshore Depth Finder
- Raymarine autopilot with smart sensor (2005)

Electrical System

- 12 volt DC Ship's system
- Original and aftermarket wiring, copper stranded
- Overcurrent Protections/Panel: Circuit breakers/Navigation station
- Five 12 Volt DC Batteries
- Two group 27, Three group 29
- Location: Underneath the starboard settee and underneath the navigation station seat
- Vapor proof rotary Master Switch
- Shore System Voltage: 120 Volt AC 30 amp
- Original and aftermarket Wiring, copper stranded
- Overcurrent Protections/Panel: Curcuit breakers/Navigation station
- Polarity Alarm
- Marinco twist lock Shore Inlet
- GFCI Protection
- Generator: Westerbeke 7.6/(2004)/106450E209 2003
- Exhaust: Wet through a FRP muffler

Deck & Hull Equipment

- Externally ballasted modified fin keel with wing and space rudder
- Aluminum internal frames and stringers
- Welded aluminum Hull/Deck Joint
- Aluminum genoa tracks
- Teak handrails
- Double vinyl coated stainless steel wire lifelines with stainless steel stanchions

Ground Tackle

- 45lb CQR with chain rode and a 22 lb Danforth
- Muir Windlass 12 Volt DC
- Remote control at the helm and a control box at the windlass

Sails and Rigging

- Keel stepped triple spreader aluminum mast
- Painted boom with Navtec rod rigging.
- Running rigging is braided Dacron lines.
- Harken roller furling headstay
- Harken mainsheet traveler
- Harken genoa tracks and cars

- Navtec hydraulic baby stay, boom vang and backstay.
- Spinnaker pole
- Reaching strut
- Running back stays
- Turning blocks
- Fairleads
- Line stoppers
- Cockpit dodger.

Winches include

- (4) Barient three speed with coffee grinders
- (6) Barient #32 self tailing starboard #32 self tailing is electric for genoa sheet. (2005)

Sail inventory includes

- 2001 North 10.8 cruising mainsail (reportedly Doyle serviced it and put their logo on it)
- 100% USA polyester 60x80x60 R/F genoa w/ Luft foam (2009)
- 1.5 oz spinnaker w/snuffer
- 110% staysail
- Storm jib and storm trysail
- Spare cruising mainsail.

Engine /Mechanical Equipment

- Main engine closed freshwater cooling with heat exchanger
- Transmission: Hurth reverse and reduction gear
- Exhaust: Wet through a FRP water lift muffler
- Steering: Chain and cable to a quadrant on the rudderpost
- Propellers: Two-blade feathering bronze prop
- Shafts: 1 3/8" stainless steel
- Struts/Cutlass Bearing: Aluminum
- Rudders: Aluminum
- Bilge Pumps: 12 Volt DC with automatic switch and a manually operated bile pump in the cockpit and underneath the aft bunk
- Blowers: 12 Volt DC

Remarks

Hussar is a tremendously strong performance cruising yacht with a beautifully finished interior. Centerline queen aft ensuite. This is a great boat for long range cruising with an occasional race thrown in. Strong fast and beautiful.

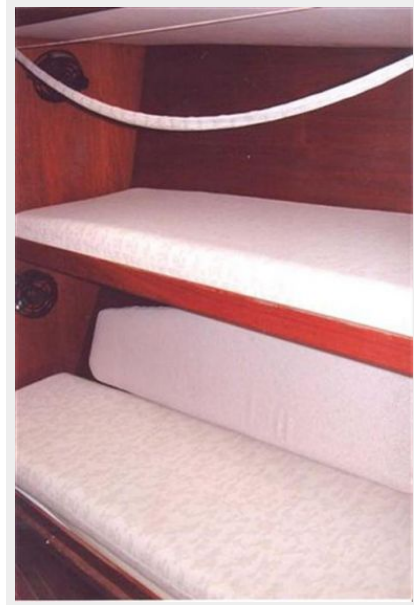
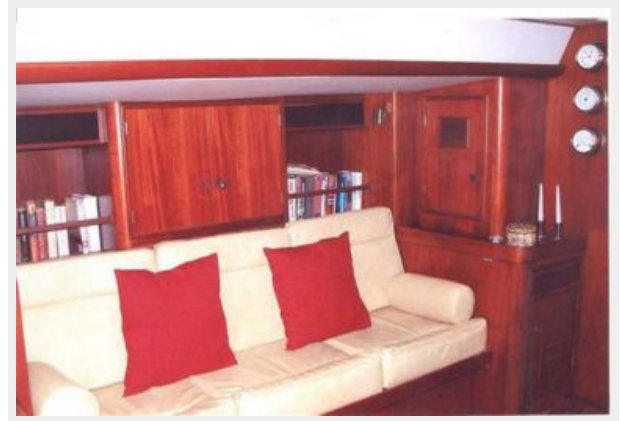
Exclusions

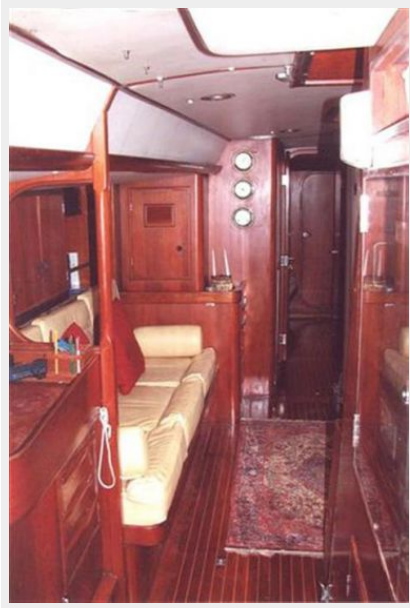
Owner's personal belongings.

Disclaimer

The Company offers the details of this vessel or yacht in good faith but cannot guarantee or warrant the accuracy of this information nor warrant the condition of the vessel. A buyer should instruct his representatives, agents, or his surveyors, to investigate such details as the buyer desires validated. This vessel or yacht is offered subject to prior sale, price change, or withdrawal without notice.

PHOTOS





CONTACTS

Andrey Shestakov, leading yacht broker of the sales department of Shestakov Yacht Sales Inc. Shestakov Yacht Sales Inc., the official representative of the Miami/Fort Lauderdale FL headquarters.

Contact details

Email: andrey@shestakovyachtsales.com

Web: shestakovyachtsales.com/en/

Telephones

USA: +1(954)274-4435

Office hours

Monday – Saturday: **9:00 - 21:00** EDT

Sunday: **closed**

Address



Harbour Towne Marina, 850 NE 3rd St,
STE 213, Dania, FL 33004