

## 90-005 — OCEAN ALEXANDER



**Судостроитель:** OCEAN ALEXANDER

**Год постройки:** 2011

**Модель:** Моторная яхта

**Цена:** **ЦЕНА ЯХТЫ ПО ЗАПРОСУ**

**Местонахождение:** United States

**Длина общая:** 90' 0" (27.43m)

**Ширина:** 22' 0" (6.71m)

**Мин. осадка:** 5' 6" (1.68m)

**Макс. осадка:** 6' 5" (1.96m)

**Крейс. скорость:** 18 Kts. (21 MPH)

**Макс. скорость:** 22 Kts. (25 MPH)

Купить 90-005 — OCEAN ALEXANDER а также выбрать подходящую вам яхту из нашего каталога яхт вам поможет опытный яхтенный брокер Андрей Шестаков. На сегодняшний день компания Shestakov Yacht Sales Inc. имеет большое количество яхт в собственном списке продаж, а также тесно сотрудничает со всеми крупными яхтенными производителями по всему миру.

Для того чтобы купить яхту 90-005 — OCEAN ALEXANDER а также проконсультироваться по любому вопросу связанному с покупкой, продажей, чартером яхт позвоните по телефону **+7(918)465-66-44**.

# ОГЛАВЛЕНИЕ

|                               |    |
|-------------------------------|----|
| ОГЛАВЛЕНИЕ                    | 2  |
| ХАРАКТЕРИСТИКИ                | 4  |
| Обзор                         | 4  |
| Основная информация           | 4  |
| Размеры                       | 4  |
| Скорость, вместимость и масса | 4  |
| Размещение                    | 4  |
| Корпус и палуба               | 5  |
| Информация о двигателе        | 5  |
| ПОДРОБНОЕ ОПИСАНИЕ            | 6  |
| Construction                  | 6  |
| Mechanical                    | 7  |
| Plumbing                      | 8  |
| Electrical                    | 9  |
| Audio/Visual                  | 12 |
| Accomodations/ Interior Decor | 13 |
| Main Deck - Sky Lounge        | 16 |
| Pilothouse / Dinette          | 16 |
| Salon                         | 16 |
| Additional equipment          | 17 |
| Исключения                    | 17 |
| Отказ от ответственности      | 17 |
| ФОТОГРАФИИ                    | 18 |
| КОНТАКТЫ                      | 25 |
| Контактная информация         | 25 |
| Телефоны                      | 25 |
| Время работы                  | 25 |
| Адрес                         | 25 |



# ХАРАКТЕРИСТИКИ

## Обзор

Must see! Stunning 3 staterooms and 2 crew. This 2011 is just over 1 year old. With just over 200 hours this boat shows like new. Captain maintained since commissioning. She has every option possible. Come see her today!

## Основная информация

**Тип судна:** Моторная яхта

**Модельный год:** 2011

**Год постройки:** 2011

**Страна:** United States

**Кубрик:** Да

## Размеры

**Длина общая:** 90' 0" (27.43m)

**Ширина:** 22' 0" (6.71m)

**Мин. осадка:** 5' 6" (1.68m)

**Макс. осадка:** 6' 5" (1.96m)

## Скорость, вместимость и масса

**Крейс. скорость:** 18 Kts. (21 MPH)

**Макс. скорость:** 22 Kts. (25 MPH)

**Водоизмещение:** 209000 Pounds

**Вместимость воды:** 650 Gallons

**Вместимость сточного бака:** 200 Gallons **Объем топливного бака:** 3000 Gallons

## Размещение

**Всего кают:** 3

**Всего ком. состава:** 1

**Каюты экипажа:** 2

**Койки экипажа:** 3

## Корпус и палуба

---

**Материал корпуса:** Fiberglass

**Материал палубы:** Teak

## Информация о двигателе

---

**Двигатели:** 2

**Производитель:** MTU

**Модель:** 10V2000

**Тип двигателя:** Inboard

**Тип топлива:** Diesel

# ПОДРОБНОЕ ОПИСАНИЕ

## Construction

### Construction - General

- Vinylester resin
- Carbon fiber infused composite hull and decks
- Airex C70.90 PVC foam sandwich construction above water line (closed cell, cross-linked polymer foam w/highest elongation in its class for great impact strength. Sound and temperature insulation w/self extinguishing properties)
- Longitudinal and lateral fiberglass stringers filled with high-density foam
- Ocean Alexander employs various techniques to reduce sound and vibration. Focusing on providing a quiet and comfortable yachting environment through various proprietary techniques of controlling sound and noise transmission. Some of these techniques include multiple insulation barriers including reflective materials, absorptive materials, dampening materials, air pockets and flexible and isolation mounts. Ultimately resulting in vibration/sounds levels that are industry leading and at times 1/2 to 1/10 of ISO-6954 requirements
- Fiberglass with infusion and vacuum bag technology
- Reinforced collision bulkhead
- Reinforced aluminum I-beam
- White gelcoat on exterior
- Frameless window
- All exterior hardware to be S/S 316 or better and to manufacture insulation

### Construction - Hull/Bottom

- Black boot top stripe
- Interior structural components all bonded to hull
- Two coats of Seahawk primer, hi-build epoxy barrier coat and covered with three coats of Seahawk self-polishing bottom paint
- Fiberglass rub rail w/ S/S striking plate

### Construction - Deck / Pilothouse

- White non-skid fiberglass decks
- Deck, superstructure and flybridge with aluminum I- beam reinforcements
- Swim ladder
- Sunbrella fabric (Berenson Tuxedo 8521) on outside cushions
- Teak swim platform w/ teak steps
- Teak deck for cockpit and side walkway to midship
- Sky lounge w/ day head & air condition and full size Stidd electric admiral series seats
- Teak swim platform w/teak steps

- Teak deck for cockpit and side walkway to midship
- S/S transom gates for pets/ children protection

## Mechanical

---

### Mechanical - Main Engine

- MTU 10V2000 1500HP engine includes 24 month total warranty and 60 months for major components Engine alarm system, for low oil pressure and high water temperature
- S/S engine beds
- Lube oil change system for engines and generators with approximately 45-gallon lube tank
- Delta T intake/exhaust fans with variable frequency drives shall be mounted to facilitate the pushing and/or pulling of air through the machinery spaces and the providing of a high rate of air exchange. Ducts shall have fire dampers installed with manual/ automatic triggering that shall be tied into the machinery shut down circuits. Ducts in way of interior living space shall be insulated and soundproofed. System of Delta-T water separator grills used on intake and exhaust sides of system
- Underwater exhaust specifically designed for Monk/Hageman tunnels
- Stainless steel rails on side of engine and stainless steel engine mounting plates
- Stabilizer with power take-off from both engines

### Mechanical - Steering / Control

- Hydraulic steering system by Hynautic/Teleflex power steering system
- Steering control station with complete instrumentation
- S/S rudders w/integrated zinc plates
- Dripless seal for rudder post
- High performance computer designed and machined NiBrAl propeller - Class "S"
- Wood steering wheel inside
- Propeller shaft Aqua 22HS. 22SH is a high grade austenitic alloy stainless steel that provides superior corrosion resistance (comparable to Aqua 22) along with excellent toughness and high strength (comparable with Aqua 17). A no compromised approach adopted by the navies around the world.
- Three electrical Stidd helm seats

### Mechanical - Generator

- Kohler 53KW (110V/60HZor220V/50HZ) genset includes 2 year/2,000 hour total warranty
- Generator exhausts to be water-drop type per "Centek" "marine Exhaust Co"
- Generator set resiliently mounted and installed with sound shield

### Mechanical - windlass / Mooring

- Hydraulic windlass, Maxwell VWC4000C x 2
- Stainless steel plow type anchors 140 lbs w/ 300ft anchor chain (1/2" HT) & chain stoppers
- Integral roller and chain stopper with Maxwell anchor winches
- Two Maxwell VC2500 vertical electric rope winches for aft deck
- Reinforced anchor platform and anchoring system
- Chain counter

#### Mechanical - Thruster/Stabilizers

- ABT hydraulic bow 40HP and stern 40HP thruster with proportional control
- Custom "Two Fin" (12sq. ft. x 2) hi-performance ABT Stabilizer w/ zero speed system
- ABT stabilizer zero speed system/kohler genset upgrade to 53KW

#### Mechanical - Other

- Spare conduit running from engine room to MSR, crew, galley etc..
- Color-coded piping system for easy identification
- Hydraulic 1750lbs yacht crane (21,000ft-lb 3 function hydraulic retracting boom, rotation and extension)
- Fire Boy Fire extinguisher system with engine- shutdown feature
- Kahlenberg triple heavy-duty horn
- All engine room and machinery spaces shall be primed and top coated with polyurethane paint system
- Hepworth heavy-duty commercial grade pantograph windshield wipers & washers w/intermittent function
- Detailed stringers in engine room & lazarette
- S/S cap on transverse stringers in central walkway
- 2HP air compressor in engine room w/ multiple quick disconnect outlets
- Zinc anodes onhull bottom under engine room
- Humphree Interceptor with automatic trim optimization system (ATOS)
- SEATORQUE shaft system
- Halyard silencing and exhaust system
- SEATORQUE shaft system
- Halyard silencing and exhaust system

## Plumbing

#### Plumbing - Fresh water system

- High volume AC fresh-water pumps
- 2mm thickness 316 S/S water tank w/ sight gauge
- Fresh-water outlet with hose for engines & generator
- Fresh-water system in 120VAC and with 24VDC backup pump



- Cold fresh-water wash down at bow, stern and boat deck

#### Plumbing - Hot water heater

- Two 30 Gallon water heater with high density fiberglass insulation w/high efficiency heating element

#### Plumbing - Fuel System

- 4.5mm thickness 5052 Aluminum fuel tanks with sight gauges and tested to International Standards 33FR 510(a) w/high and low fuel level alarm system
- Duel Racor fuel/water separator with Y-valves forengine & generator
- Gulfcoast Fuel polishing system based on US Military Abrahams-M1 Tank design
- Sight gauges for all tanks

#### Plumbing - Sewage Treatment System

- Headhunter waste treatment system (50Gal/day)
- Grey water tanks for showers

#### Plumbing - Bilge / Discharge

- Oversized drains to overboard
- Automatic bilge pump - The vessel shall be outfitted with automatic bilge pump with manual and automatic switches in each space as divided by watertight bulkheads. High water alarms will be mounted in each of these bilge zones
- High water bilge alarm at every Rule bilge pump station
- One manual bilge pump
- Dry bilge area arrangement in center engine room

#### Plumbing - Deck / Flybridge

- Dock-side water inlet
- Both sides filler for fuel tanks with individual tank vents

---

## Electrical

---

#### Electrical - AC/DC System

- AC outlets throughout
- Octoplex NMEA 2000 electrical control system. Based on military technology for remote activation, control and status reporting of all; AC and DC breakers. Monitors all power

sources (AC and DC) for voltage, frequency and amperage abnormalities and provide visual and audio alerts. Includes enhanced circuit breaker functionality with no-load indication, dimming and usage information with touch screen monitors that is user reconfigurable. Brown-out configurable control through auto load shedding is included where operator designated equipment remains powered on while automatically switching other systems off. Octoplex NMEA 2000 Vessel system monitor system. Provides main access doors, tank level, bilge level and battery monitoring of current, voltage and temp. It is networked into NMEA 2000

- Octoplex system AC/ DC sub panels in galley, PH, crew areas
- All primary AC & DC electrical wiring is appropriately labeled throughout the yacht
- GFI (110V) AC outlet with Smartlock feature for operation error protection which exceeds UL requirements
- AC duplex receptacles throughout the boat with GFI protection in dedicated areas
- 24V DC system throughout boat
- 12V DC generator starting system
- 12V & 24V DC electronic system

#### Electrical - Air Conditioning

- Cruisair chilled water system air conditioning w/air handlers for central air conditioner, 3 units, total 201k BTU (Reverse Cycle Capable for operating down to 40)
- Refrigerant type is accepted worldwide under the Montreal Protocols
- Dedicated engine room air conditioning

#### Electrical - Shore power connector

Shore power receptacle 2 x 100 AMP on transom w/ 115ft cablemaster

#### Electrical - Lighting

- 24V lights in all compartments
- 24V LED lights (Aerospace quality, specially tuned color temperature for Ocean Alexander that last over 100,000 hours)
- Marine explosion-proof fluorescent lights in AC and DC configurations
- Convenience lights, lower deck and FB
- Flooding light at back of boat deck
- Reading lights in VIP headboard
- International navigation lights
- All staterooms, salon, pilothouse and Flybridge w/indirect lighting
- Four Underwater lights
- Spreader lights under wing mast
- ACR searchlight (RCL100D/24V) with 1 PH
- Four Underwater lights

- ACR searchlight with remote in skylounge
- Spreader lights under wing mast

#### Electrical - Navigation

- FURUNO navigation package integrated with NMEA2000
- FURUNO MFD Black Box Processors
- FURUNO 6Kw 6ft Open Array Dual Ranging Radar
- FURUNO Class B AIS Integrated into Radar and Chart Plotter
- FURUNO Digital Sounder with 1Kw B260 Broadband Transducer
- 19" Marine Monitors PH
- AXIS IP Camera in Engine Room in Engine Room and Aft Deck
- ICOM 604 VHF PH and FB
- Simrad AP28 Autopilot System at PH
- KVH HD7 Control Panel Satellite HDTV System
- Maretron DSM250 NMEA 2000 GPS, Depth Sounder and Weatherstation
- Nobeltec Navigation Computer Software
- UPS electrical protection for navigation computer
- Direct TV receiver with UPS
- N2K View vessel and security monitoring package
- Sea Recovery 900G/Day water maker w/auto fresh water flush operation, PH Neutralizer, UV sterilizer and Commercial Pre-filter
- Isoboost package
- Furuno pg500 heading sensor
- Additional 6kw Furuno Navnet 3D radar with custom stainless arch
- Apple configured wi-fi throughout w/printer
- Fogmate auto signalling device
- All electronics updated with latest software versions
- MTU engine programs updated 4/1/11
- MTU wired docking remote in skylounge

#### Electrical - Inverter / Charger

- Mastervolt 400W inverter/ charger (pure sine wave)
- Mastervolt battery charger (engine: 24V/60A, genset: 12V/25A)

#### Electrical - Battery

- Heavy-duty batteries (house banks: 1100 AH, engine batteries: 550AH, genset batteries: 490AH)
- Battery paralleling system w/ control switch
- Service battery switch
- AGM Batteries with 40 to 140 operating temp and industry leading low self-discharge rates 1 to 3 percent

#### Electrical - Bonding system

- Bonding system throughout
- The vessel's bonding and grounding systems shall include copper straps secured to the hull and running the full length of the vessel parallel to centerline, Engines, generators, metallic through hulls, strainers, and pump bodies shall be connected to the bonding strap using 8 AWG wire minimum or equivalent

#### Electrical - Other

- Marine-grade, tinned copper wiring
- Vimar switches and outlets
- Ritchie compass 5
- Exterior connector for shore phone and cable TV
- N2KView Vessel and Security Monitoring Package
- Isoboost package (100AMP by 100AMP)
- Sea Recovery 900G/Day water maker w/auto fresh water flush operation, PM Neutralizer, UV Sterilizer and Commercial Pre-filter
- Crestron system

---

## Audio/Visual

---

#### Audio Visual - Master Stateroom

- LCD 42" TV with Blu-Ray disc player fully integrated into high-performance Crestron audio system (Dolby true HD DTS-HD XM/Sirius Capable w/multiEQ that provides virtually perfect acoustical environment for up to six individual seating locations, also detects "out of phase inner" auto compensable to match w/subwoofer and speakers. HDMI 1.3 provides high bandwidth HD video output) for true color HD reproduction
- Middle-Atlantic Media Rack for A/ V equipments (Professional Studio quality rack provides ease in accessing various A/V equipment. Reduces labor, damage w/heavy duty 13-gauge S/S and interlocking corners)
- Furman power conditioner (featuring multi-stage linear amplifier tech and extreme voltage shutdown for yacht's unstable shore/genset power)
- One Subwoofer

#### Audio Visual - Salon

- Plasma 50" TV with Blu-Ray disc player fully integrated into high-performance Crestron audio system (Dolby true HD DTS-HD XM/Sirius Capable w/multiEQ that provides virtually perfect acoustical environment for up to six individual seating locations, also detects "out of phase inner" auto compensable to match w/subwoofer and speakers. HDMI 1.3 provides high bandwidth HD video output) for true color HD reproduction

- Middle-Atlantic Media Rack for A/ V equipments (Professional Studio quality rack provides ease in accessing various A/V equipment. Reduces labor, damage w/heavy duty 13-gauge S/S and interlocking corners)
- Furman power conditioner (featuring multi-stage linear amplifier tech and extreme voltage shutdown for yacht's unstable shore/genset power)
- One Subwoofer

#### Audio Visual - Skylounge

- LCD 32" TV with Blu-Ray disc player fully integrated into high-performance Crestron audio system (Dolby true HD DTS-HD XM/Siruis capable w/multiEQ that provides virtually perfect acoustical environment for up to six individual seating locations, also detects "out of phase inner" auto compensable to match w/subwoofer and speakers. HDMI 1.3 provides high bandwidth HD video output) for true color HD reproduction
- Middle-Atlantic Media Rack for A/ V equipments (Professional Studio quality rack provides ease in accessing various A/V equipment. Reduces labor, damage w/heavy duty 13-gauge S/S and interlocking corners)
- Furman power conditioner (featuring multi-stage linear amplifier tech and extreme voltage shutdown for yacht's unstable shore/genset power)

#### Audio Visual - Crew Quarters

- LCD 22" TV and Blu-Ray disc player on Capt. and crew cabins wall
- Audio stereo and video system w/ IR repeater eye

#### Audio Visual - Dinette / Aft deck

- 26" HDTV on dinette w/Blu-Ray disc player audio stereo and video system integrated into high-performance Crestron audio system
- LCD 22" TV on wall (Aft Deck)

#### Audio Visual - VIP / Guest Staterooms

- LCD 22" TV and Blu-Ray disc player integrated into high-performance Crestron audio system on port wall beside door (VIP)
- LCD 22" TV on wall and Blu-Ray disc player integrated into high-performance Crestron audio system (Port Guest)
- Audio stereo and Video System

---

## Accommodations/ Interior Decor

---

#### Accommodations / Interior Decor - Interior Decor

- Sapelli paneling and cabinetry in semi-gloss
- High quality European door locks

- Crestron remote (2x) plus wall mount
- Cedar-lined hanging locker with auto lighting
- Majilite Fabric for lower walkway walls
- Painted plywood flooring prepared for carpet, except wood flooring in PH, head and galley
- Concealed hinges throughout interior cabinets w/auto soft-closing function that prevents a kitchen cabinet door from slamming, as it slowly and silently brings the door to a closed position
- Ergonomically designed mattresses and settees
- Mattresses for berths (independent his/her construction allowing for disturb free movement during sleep)
- Maytag 2400A WW stacked washer/dryer (Commercial quality, Energy star washer/dryer w/generous 2.4 cu. ft. capacity) in lower foyer
- Refrigerator and icemaker in lower foyer
- Granite countertop for cabinet in foyer
- Granite floor with customer indicated pattern for lower foyer

#### Accommodations / Interior Decor - Master Stateroom

- "Floating" King-sized berth
- Two "floating nightstands with marble countertops"
- Bureau w/chest of drawers at starboard side and Burl accents
- Hidden safe in hanging locker
- Fixed windows on hull side
- Custom headboard with recessed indirect lighting
- Cedar - lined, twin full - height hanging locker with automatic lighting

#### Accommodations / Interior Decor - Crew Quarters

- Kitchenette (microwave and refrigerator)
- Sapelli paneling and cabinetry
- Double berth on crew cabin
- Cedar-lined hanging locker with automatic lighting
- Granite countertop in lounge
- Storage locker
- Amtico flooring
- full head with vanity and shower

#### Accommodations Interior decor - Heads

- Sapelli paneling and cabinetry
- Marble heated flooring in VIP & Port Guest
- Marble countertops with china sink
- Cifial Kohler or Grohe sink faucets and Grohe for shower
- Seamless fiberglass stall shower w/one-piece glass door, Industry leading seamless one-piece shower stall design provides long term protection against moisture, water intrusion

behind the shower panels - leading to foul odors and water damage

- Cabinet with mirror door above sink
- Air extraction in each head shall be by low noise extraction fans
- Tecma toilet system throughout
- Custom bathroom fixtures
- S/S rectangular port lights w/screens
- Granite or marble countertops and back splash in heads with Cifial and Grohe faucets and bone china sink
- Fiberglass seamless stall shower w/one-piece glass door
- Crew quarters w/private head, shower and refrigerator
- Solid wood plank floor in skylounge dayhead in lieu of granite

#### Accommodations Interior decor - Master Head

- Twin his-and-hers heads
- Sconces with dimmers above sink
- Lockers beside heads
- Clear glass wall between shower room and head
- Marble wall in shower and heated floor in head
- Tecma heads

#### Accommodations Interior decor - Galley

- Sapelli panel and cabinetry
- Galley Storage cabinetry w/hidden hinges
- Granite countertops
- Wood flooring
- Frank professional series kitchen sink w/pull out tap
- Exhaust blower
- Overhead dish locker fwd and aft
- 27" Gaggenau electric cook top
- 24" Gaggenau electric oven
- Sub-Zero Refrigerator / freezer
- Whirlpool garbage disposal
- 30" JennAir over-the range Microwave with speed- Cook Convection oven with exhaust blower
- 24" Fisher/Paykel dishwasher
- 15" Whirlpool trash compactor
- Seagull water purifier (ADEX design award winner w/filtration to 0.1 microns and EPA certification for microbiological purification)

#### Accommodations Interior decor - VIP / Guest Staterooms

- Queen-sized berth w/inner spring mattress
- Sapelli paneling and cabinetry

- Painted floor prepared for carpet
- Drawers under berth
- Cedar - lined hanging locker with automatic lighting
- S/S rectangular port lights w/screens in port guest
- Two "floating" nightstands with marble tops in port guest

---

## Main Deck - Sky Lounge

---

- Skylounge w/dual hatches for ventilation and light
- White non-skid fly bridge decks
- Cabinet including wet bar, fridge, Sub Zero wine cooler w/solid panel door and storage (Skylounge)
- 24" Electri-Chef electric barbecue on boat deck
- Boat deck sliding hatch
- Sapelli valance board
- Sapelli table
- Raised settee with table
- Day head for skylounge
- Solid wood plank floor in skylounge daybed in lieu of granite
- Chart locker (Skylounge)
- 6-person lighted Jacuzzi w/custom fiberglass enclosure on boat deck

---

## Pilothouse / Dinette

---

- Sunken and extended dash with instrumentation (Skylounge)
- U-Shaped forward dinette on main deck
- Wood dinette table and computer desk
- Windshield defrosters (skylounge)
- Phantom Screen (for insects and pollen protection) with dedicated wood box for door
- Watertight doors to side deck
- Pantograph doors in pilothouse

---

## Salon

---



- Sapelli paneling and cabinetry
- Cabinets port and starboard of salon
- Custom designed window mullion
- Decorative ceiling treatment
- Phantom screen (for insects and pollen protection) with dedicated wood box for door
- Sub Zero wine cooler

## Additional equipment

---

3 on deck storage lockers

New Viking 6 man life raft

4 custom teak chairs on back deck

21 cubic foot freezer with cover on top deck

Insta Hot in galley sink

Stainless steel tool box in engine room

Rod holders in engine room

Water maker programs updated 11/11/11

2 custom 75 foot lock lines

Dockside water filter and softener

3 additional inflatable Aer fenders with pump

## Исключения

---

При продаже яхты исключаются личные вещи владельца.

## Отказ от ответственности

---

Компания предоставляет описание судна или яхты добросовестно, но не может гарантировать точность этой информации, а также не ручается за техническое состояние. Покупатель должен проинструктировать своих агентов или оценщиков исследовать представленную информацию более подробно, по собственному желанию. Продажа судна или яхты, изменение цены или снятие с продажи будет происходить без предварительного уведомления.

# ФОТОГРАФИИ

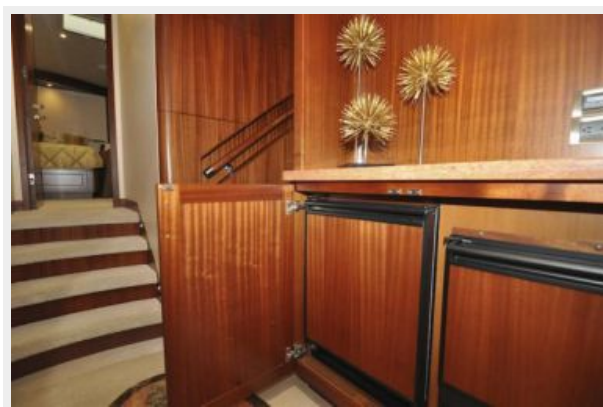
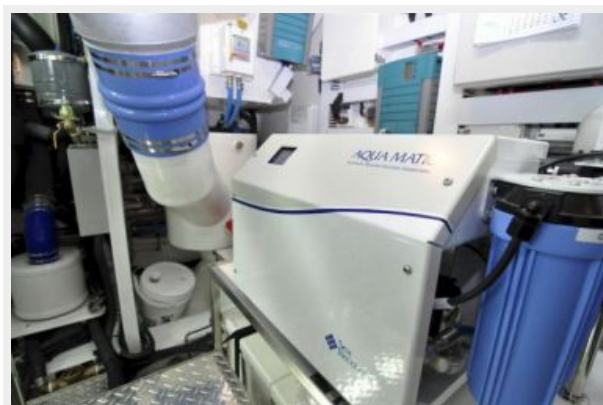
















# КОНТАКТЫ

---

Андрей Шестаков (Andrey Shestakov) – ведущий яхтенный брокер отдела продаж яхт и судов компании Shestakov Yacht Sales Inc. Официальный представитель Shestakov Yacht Sales Inc. для русскоговорящих клиентов в центральном офисе компании в Майами/Форт Лодердейл/Флорида/США.

## Контактная информация

---

Email: [andrey@shestakovyachtsales.com](mailto:andrey@shestakovyachtsales.com)

Web: [shestakovyachtsales.com](http://shestakovyachtsales.com)

## Телефоны

---

Краснодарский край: **+7(918)465-66-44**

США, Майами, Флорида: **+1(954)274-4435**

## Время работы

---

Понедельник – Суббота: **9:00 - 21:00**  
EDT

Воскресенье: **Закрето**

## Адрес

---



Harbour Towne Marina, 850 NE 3rd St,  
STE 213, Dania, FL 33004