

CONSPIRACY — HATTERAS



Builder: HATTERAS

Year Built: 1978

Model: Sport Fisherman

Price: PRICE ON APPLICATION

Location: United States

LOA: 53' 0" (16.15m)

Beam: 16' 0" (4.88m)

Min Draft: 4' 0" (1.22m)

Our experienced yacht broker, Andrey Shestakov, will help you choose and buy a yacht that best suits your needs **Conspiracy — HATTERAS** from our catalogue. Presently, at Shestakov Yacht Sales Inc., we have a wide variety of yachts available on our sale's list. We also work in close contact with all the big yacht manufacturers from all over the world.

If you would like to buy a yacht **Conspiracy — HATTERAS** or would like help answering any questions concerning purchasing, selling or chartering a yacht, please call **+1(954)274-4435**

TABLE OF CONTENTS

TABLE OF CONTENTS	2
SPECIFICATIONS	3
Overview	3
Basic Information	3
Dimensions	3
Speed, Capacities and Weight	3
Hull and Deck Information	3
Engine Information	3
DETAILED INFORMATION	4
ACCOMMODATIONS AND LAYOUT	4
DECK AND HULL	4
MECHANICAL AND ENGINE EQUIPMENT / ROOM	4
GALLEY AND LAUNDRY	4
ELECTRONICS AND NAVIGATION EQUIPMENT	5
FISHING EQUIPMENT	5
REMARKS	5
Exclusions	5
Disclaimer	5
PHOTOS	6
CONTACTS	8
Contact details	8
Telephones	8
Office hours	8
Address	8

SPECIFICATIONS

Overview

Seller will consider a medium to large outboard in trade!

Basic Information

Category: Sport Fisherman

Model Year: 1978

Year Built: 1978

Country: United States

Cockpit: Yes

Dimensions

LOA: 53' 0" (16.15m)

Beam: 16' 0" (4.88m)

Min Draft: 4' 0" (1.22m)

Speed, Capacities and Weight

Displacement: 61000 Pounds

Water Capacity: 250 Gallons

Fuel Capacity: 1100 Gallons

Hull and Deck Information

Hull Material: Fiberglass

Engine Information

Engines: 3

Manufacturer: Detroit Diesel

Engine Type: Inboard

Fuel Type: Diesel

DETAILED INFORMATION

ACCOMMODATIONS AND LAYOUT

Layout: Three staterooms, two heads, galley up.

Beginning forward is the V-berth with upper and lower berths to port, drawer and hanging storage, deck access hatch. Next aft and to starboard is the guest head with separate stall shower. Further aft is the second guest stateroom with upper and lower berths, deck access hatch, drawer and hanging storage. Directly to port is the master stateroom with a queen berth aft, plenty of drawer and hanging storage, a private head with separate stall shower. The salon is aft and up 4 steps with the galley forward, sofa to starboard and bar aft.

The décor is Teak paneling and cabinetry throughout with dark blue carpet.

DECK AND HULL

Danforth anchor, custom spray rails, stainless steel rails and hardware, Coaming pads, 4-sided bridge enclosure, 2 Pompanette helm chairs, 13' Boston Whaler with 30 hp Evinrude outboard, Marquipt davit with Go-Lo electric winch, Galley Maid electric windlass, fiberglass deck, glassed in front windows, Pipewelders half tower, Zodiac 6-man life raf

MECHANICAL AND ENGINE EQUIPMENT / ROOM

12V71TI'S 650 HP Detroit Diesels, electric fuel priming pumps, belt driven emergency bilge pump, oil change system, Kilo Pak 15 KW generator with 2835 hours, Sentry 32-volt 30-amp charger, air conditioned engine room, Mechanical gauges for water temp, gear and engine oil pressure, Dual 1000 Racor fuel filters with vacuum gauges, Sentry 12-volt 40-amp battery charger, 110-volt and 220 volt A/C and 32-volt and 12volt DC electrical systems, Glendinning automatic engine synchronizers.

GALLEY AND LAUNDRY

U-line under counter refrigerator and freezer, single stainless steel sink, built-in Nutone blender, Princess 3-burner electric stove and oven, GE microwave oven, teak cabinetry, pressure and dockside water, U-line ice maker, 30 gallon electric water heater, Craftsman 110-volt fresh water pump.

ELECTRONICS AND NAVIGATION EQUIPMENT

Icom ICM56 VHF, Northstar 952X GPS, Furuno FCV582L color fish finder, Icom 1CM502 VHF, Standard Horizon hailer, Furuno 48 mile radar, Robertson AP20 autopilot, Samsung 22" flat panel TV, JVC component stereo system, overhead radio box.

FISHING EQUIPMENT

Large Murray fighting chair, Pipewelders triple spreader outriggers, center rigger, Hatteras factory bait station with sink, storage and freezer, 6-rod holders, transom door and gate, cockpit engine controls.

REMARKS

The CONSPIRACY is truly an incredible boat that has enjoyed light use and professional maintenance her whole life, as well as being stored in a fresh water and covered environment. If you want a pampered original, 53' Hatteras, this is it.

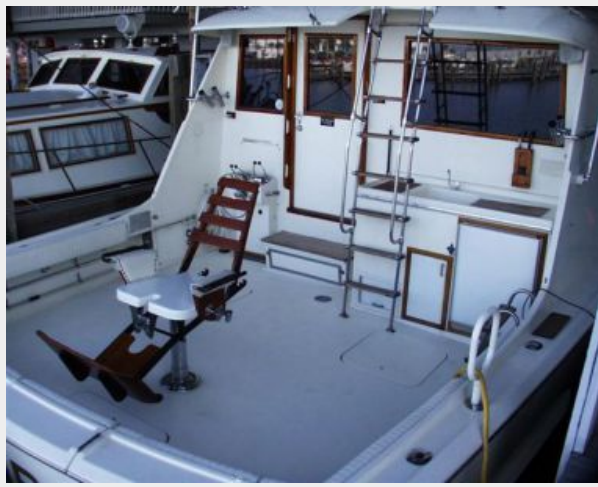
Exclusions

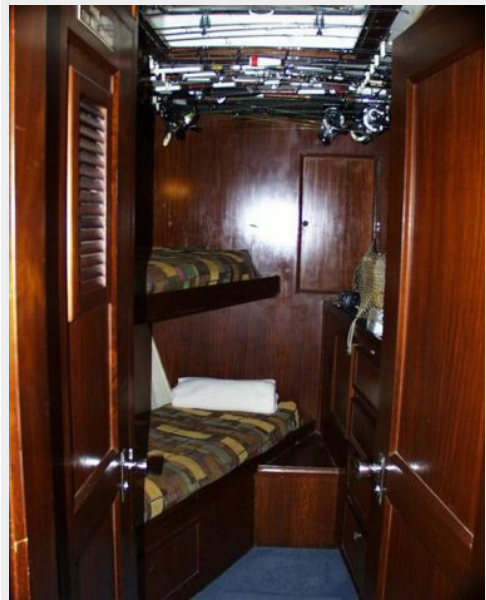
Owner's personal belongings.

Disclaimer

The Company offers the details of this vessel or yacht in good faith but cannot guarantee or warrant the accuracy of this information nor warrant the condition of the vessel. A buyer should instruct his representatives, agents, or his surveyors, to investigate such details as the buyer desires validated. This vessel or yacht is offered subject to prior sale, price change, or withdrawal without notice.

PHOTOS





CONTACTS

Andrey Shestakov, leading yacht broker of the sales department of Shestakov Yacht Sales Inc. Shestakov Yacht Sales Inc., the official representative of the Miami/Fort Lauderdale FL headquarters.

Contact details

Email: andrey@shestakovyachtsales.com

Web: shestakovyachtsales.com/en/

Telephones

USA: +1(954)274-4435

Office hours

Monday – Saturday: **9:00 - 21:00** EDT

Sunday: **closed**

Address



Harbour Towne Marina, 850 NE 3rd St,
STE 213, Dania, FL 33004