

# LADY THURAYA — LUBBE VOSS, GERMANY



**Судостроитель:**

LUBBE VOSS, GERMANY

**Год постройки:** 1982

**Модель:** Шхуна

**Цена:** ЦЕНА ЯХТЫ ПО ЗАПРОСУ

**Местонахождение:** France

**Длина общая:** 101' 9" (31.00m)

**Ширина:** 20' 0" (6.10m)

**Макс. осадка:** 1076' 2" (328.00m)

**Крейс. скорость:** 8 Kts. (9 MPH)

**Макс. скорость:** 105 Kts. (121 MPH)

Купить **LADY THURAYA — LUBBE VOSS, GERMANY** а также выбрать подходящую вам яхту из нашего каталога яхт вам поможет опытный яхтенный брокер Андрей Шестаков. На сегодняшний день компания **Shestakov Yacht Sales Inc.** имеет большое количество яхт в собственном списке продаж, а также тесно сотрудничает со всеми крупными яхтенными производителями по всему миру.

Для того чтобы купить яхту **LADY THURAYA — LUBBE VOSS, GERMANY** а также проконсультироваться по любому вопросу связанному с покупкой, продажей, чартером яхт позвоните по телефону **+7(918)465-66-44**.

# ОГЛАВЛЕНИЕ

ОГЛАВЛЕНИЕ	2
ХАРАКТЕРИСТИКИ	4
Обзор	4
Основная информация	4
Размеры	4
Скорость, вместимость и масса	5
Размещение	5
Корпус и палуба	5
Информация о двигателе	5
ПОДРОБНОЕ ОПИСАНИЕ	6
Accommodations	6
Galley / Laundry	6
Rigging	7
Sails	7
Deck equipment	7
Machinery	8
Tank capacity	8
Ancillary machinery	8
Electrical systems	8
Navigation equipment	9
Communication equipment	9
Entertainment	9
Tender & toys	10
Safety, security equipment & fire protection	10
Additional	10
Исключения	11
Отказ от ответственности	11
ФОТОГРАФИИ	12

---

Sailing	12
Bird's Eye View	12
Cruising Pleasures	12
Layout	13
Salon	13
Salon with navigation area	13
Salon Panorama	13
Salon Dining Area	13
Salon with open galley	13
Galley	14
Office	14
Master Cabin	14
VIP Cabin	14
Bathroom	15
Guest Cabin (1)	15
Guest Cabin (2)	15
Crew Cabin	15
<b>КОНТАКТЫ</b>	<b>16</b>
Контактная информация	16
Телефоны	16
Время работы	16
Адрес	16

# ХАРАКТЕРИСТИКИ

## Обзор

In 1982, the renowned shipyard Lübbe Voss built a classic beauty, designed by Henk Lunstroo, the traditional legendary schooner "Borkumriff II". She has been totally rebuilt in 2009/11 and - under the name of LADY THURAYA - has today all the facilities of a modern premium sailing yacht whilst keeping her charming classical appearance.

The refit project began in 2008, when the recent owner found her. He embarked on a rebuilding refit project to convert the classic schooner into a most luxurious sailing yacht of highest quality. Following more than 18 months in the yard, LADY THURAYA was launched and has since been popular among sophisticated charter clients. Thanks to her lavish deck & entertainment areas on and below deck, her modern state-of-the-art equipment and the elegant, timeless interior, complemented by new decks, the yacht provides ample space and comfort for eight guests in salon and four luxurious en suite cabins. With a highly experienced crew and in mint condition, LADY THURAYA is now for sale and ready for her new owner to set sail to unforgettable adventures on the Seven Seas.

## Основная информация

**Тип судна:** Шхуна

**Модельный год:** 1982

**Год постройки:** 1982

**Год обновления:** 2009

**Вид обновления:** Totally refitted  
2009/2011

**Страна:** France

## Размеры

**Длина общая:** 101' 9" (31.00m)

**Длина по ватерлинии:** 90' 3" (27.50m)

**Ширина:** 20' 0" (6.10m)

**Макс. осадка:** 1076' 2" (328.00m)

## Скорость, вместимость и масса

---

**Крейс. скорость:** 8 Kts. (9 MPH)

**Макс. скорость:** 105 Kts. (121 MPH)

**Водоизмещение:** 319670.2799 Pounds

**Чистый вес:** 9025 Pounds

**Вместимость воды:** 1320.86026 Gallons

**Объем топливного бака:** 1320.86026 Gallons

## Размещение

---

**Всего кают:** 4

**Всего коек:** 8

**Спальные места:** 8

**Всего ком. состава:** 4

**Каюты экипажа:** 2

**Койки экипажа:** 5

**Спальных мест экипажа:** 5

**Комм. состав экипажа:** 1

## Корпус и палуба

---

**Материал корпуса:** Steel

**Материал палубы:** Teak

**Цвет корпуса:** white

**Дизайнер интерьера:** Henk Lunstroo

## Информация о двигателе

---

**Двигатели:** 1

**Производитель:** John Deere

**Модель:** 6086FM75

**Тип топлива:** Diesel

---

# ПОДРОБНОЕ ОПИСАНИЕ

---

## Accommodations

---

Cabins OWNER :1 (Queen-size bed)

GUESTS :1 (double bed) + 2 (twin beds) CREW :2

Berths OWNER :2 GUESTS :6 CREW :5

Shower OWNER :1 GUESTS :3 CREW :1

WC OWNER :1 GUESTS :3 CREW :1

SALOON : Yes

## Galley / Laundry

---

REFRIGERATOR : Yes

DEEP-FREEZER : Yes

ICEMAKER : HOSIZAKI icemachine IM series In addition: PHILIPS juicer professional alu, PRINCESS juicer 5007-V0, PHILIPS mixer HR 1560, KENWOOD mixer pro line, TEFAL express toaster

MICRO WAVE OVEN : MIELE and MIELE grill steamer DGC 5080, MIELE magnetron/grill 45040 BM

COFFEE MACHINE : JURA Impressa xs 95, KRUPS Blender X1 6, SENSEO HD 7812

STOVE : MIELE ceramic stove KM551, MIELE frying pan KM 403

DISH WASHER : MIELE G1562 SCVI

WASHING MACHINE : MIELE PW6065 plus

DRYER : MIELE PT7136 plus

---

## Rigging

---

RIG : Stainless steel, wire with bronze turnbuckles Running rigging: DYNEEMA 2009 Blocks: traditional wooden type

MAST/S HEIGHT FROM W.L. : Main mast 28 m above waterline

MAST/S : Wooden masts and booms are hollow, section-glued and of fine grain Oregon pine Bowsprit Oregon pine Fittings/hardware material: Stainless steel, bronze, manganese, many custom designed and handmade

BOOM/S : One aluminium spi-boom installed on forward masts

---

## Sails

---

MAIN : DACRON, heavy Deck fear : Stainless steel and bronze traditional, custom made Main top sail : DACRON medium Schooner sail : DACRON heavy Schooner top sail : DACRON medium Golly 1 : DACRON heavy Golly 2 : DACRON medium

JIB : DACRON heavy; Jibtop: DACRON heavy

GENNAKER : DACRON medium

STAY : Staysail 1: DACRON heavy, Staysail 2 : DACRON heavy

---

## Deck equipment

---

WINCHES : Anchor winch: Electric, steen 4 kW - 380 V with twin gypsy + capstan and extra warping capstan on top Installed stainless steel socket

ANCHOR & CHAIN : 2 x , stowed at st. steel bow plates/chain pipes 2 x ca. 150 m re-galvanised steel anchor chains Davits: One traditional pair for both sides, hand operated + 2 x fwd seats for davit on SB and port for anchor handling

---

## Machinery

---

MAIN ENGINES HP (KW) : 1 x JOHN DEERE model 6086FM75 (new 2009), 300 Hp

GEAR BOX : LOHMANN & STOLTERFOHT hydraulic gearbox

reduction 1:3

SPEED (MAX.) : 8 kn

SPEED (CRUISING) : 10,5 kn

BOWTHRUSTER / HP (KW) : HYDROPACK: Steering gear /furls/ bowthruster

---

## Tank capacity

---

FUEL TANK : 5,000 l

FRESH WATER TANK : 5,000 l

---

## Ancillary machinery

---

WATER MAKER : DESSALATOR 150 l/h, 3600 l/day (new 2009)

AIR CONDITIONING : MARINE COMPACT chiller x 3

---

## Electrical systems

---

GENERATORS / KW : JOHN DEERE 4045DFM70 45 kW (new 2009) ONAN MDKAE 30 kW

CAPACITY : 380/220/24

BATTERIES : Start sets (all new 2009):

1 x 24V main engine 1 x 24V JOHN DEERE generator 1 x 12V ONAN generator Service set: 1 x 24V, consisting of 12 closed maintenance free gel type batteries of totally 1100 Amp/h



BATTERY CHARGER : Batteries: Seaworthy stowed in boxes with (class) ventilation system in keel

SHORE POWER : 380/220

## Navigation equipment

---

AUTOPILOT :SIMRAD AP50, SIMRAD AI50 AIS class b, SIMRAD FU50 steering lever

COMPASS : FURUNO Satellite compass SC-50

GPS / PLOTTER : FURUNO GPS GP-32

SATNAV : FURUNO Navnet 3D

RADAR : FURUNO Radar FAR 2127, FURUNO Radar dome DSRD

SONAR : FURUNO Networksounder DFF1

WEATHER FAX : FURUNO

NAVTEX : FURUNO

WIND SPEED & DIRECTION : FURUNO

RUDDER ANGLE INDICATOR : FURUNO

## Communication equipment

---

VHF-RADIOTEL: 2 x SAILOR RT2048, VHF DSC SAILOR RM 2042, VHF DSC ICOM ic-M603, MF/HF Icom ic-M802, Portable VHF Icom ic-M88

FAX : Yes, and KVH FLEET 33 satellite phone/ fax

INTERNET : KVH FLEET 33 satellite phone / fax / Internet,Wifi Internet

INTERCOM : Cell phone GPRS/UMTS, internal telephone system

- 

## Entertainment

---

TV/VIDEO : KVH M5 satellite TV, SAMSUNG Flatscreen TV in owner and 3 x PHILIPS TV in guest cabins, SAMSUNG TV in salon. Request Video on demand system for cabins & salon

DVD/CD PLAYER : SAMSUNG DVD player

RADIO/HIFI : AKAI stereo system, SONY autoradio wheelhouse

SAT RECEIVER : 2 x satellite TV receiver

## Tender & toys

---

TENDER : NOVAMARINE 400 ENGINE (TENDER) HP (KW) : YAMAHA outboard 15 hp

WATER SKI: Yes SNORKELLING EQUIPMENT : Yes

DIVING COMPRESSOR : BAUER UCM 97

OTHERS : DONUT

## Safety, security equipment & fire protection

---

LIFE RAFTS : 2 x RFD liferaft 16 pers

LIFE JACKETS : 13

Others: 13 x TPA, 2 x HORSE SHOE life bouy + light, MARKUS lifenet, medical pack cat. 0  
SOLAS A 10 pers. MCA MSN 1768

DISTRESS FLARES : Yes, acc. MCA cat. 0

EPIRB : Yes, fireblanket

FIRE-EXTINGUISHING INST. : Fixed CO2 installation E.R. 30 kg

FIRE-EXTINGUISHER : 4 x powder 6 kg, 2 x CO2 5 kg, 4 x powder 2 kg, 3 x powder 1 kg

## Additional

---

Construction details:

Heavy displacement S-frame with overhang stern and raked schooner bow and long keel, with

steel rudder to keel + skeg. All welded construction. Built 6-7 mm approved steel with transverse framing, bulkhead 5 mm stainless steel. The underwater hull is mostly double bottom with integrated steel tanks. 7 watertight sections, partly through 3 special developed aluminium of which 2 integrated sliding doors and two watertight bulkheads, ensuring maximum floating stability when a compartment is flooded. Bulwark including fastening strip under caprail, fairlead holes, anchor chain pipes and bow protection plates.

REFIT : 2009/2011 complete interior/exterior refit , including machinery and installations.

DETAILS: \*Steelworks on hull and tank section \*New engine 2009 \*New generator 2009

\*Complete new technical installation, electric, sanitary and service lines. \*New teak deck

\*Completely brand new interiors \*Rigging and sails checked and modernised \*All equipment from kitchen to laundry new 2009 \*All navigation system state of the art 2009 \*All entertainment system, video on demand, 2009

Propulsion: PROP SHAFT Steering: Electric-hydraulic system with joysticks at each steering position, steering wheel in cockpit, emergency tiller aft.

Mooring lines: 1 x 45 m, 2 x 30 m, 2 x 20 m Fenders: 6 x HENSHAW inflatable fender 200 x 40 cm 4 x HENSHAW inflatable fender round 100 cm

## Исключения

---

При продаже яхты исключаются личные вещи владельца.

## Отказ от ответственности

---

Компания предоставляет описание судна или яхты добросовестно, но не может гарантировать точность этой информации, а также не ручается за техническое состояние. Покупатель должен проинструктировать своих агентов или оценщиков исследовать представленную информацию более подробно, по собственному желанию. Продажа судна или яхты, изменение цены или снятие с продажи будет происходить без предварительного уведомления.

# ФОТОГРАФИИ

**Sailing**



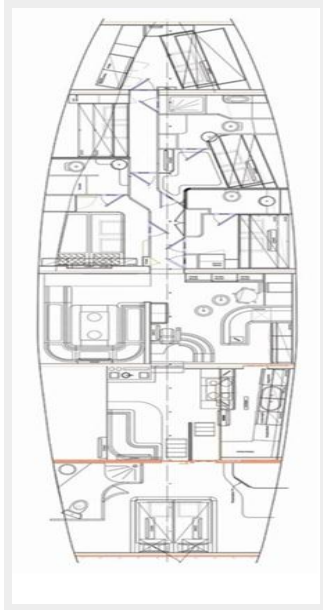
**Bird's Eye View**



**Cruising Pleasures**



### Layout



### Salon



### Salon with navigation area



### Salon Panorama



### Salon Dining Area



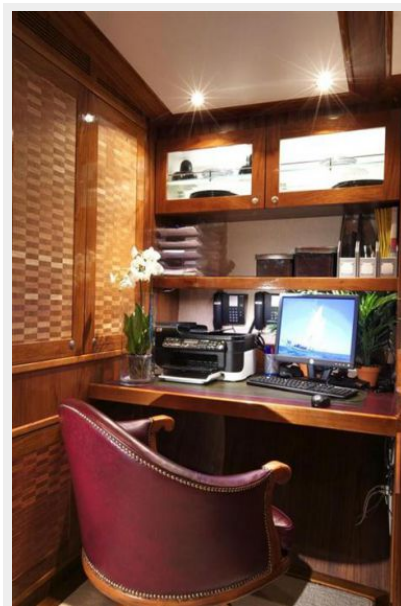
### Salon with open galley



**Galley**



**Office**



**Master Cabin**



**VIP Cabin**



## Bathroom



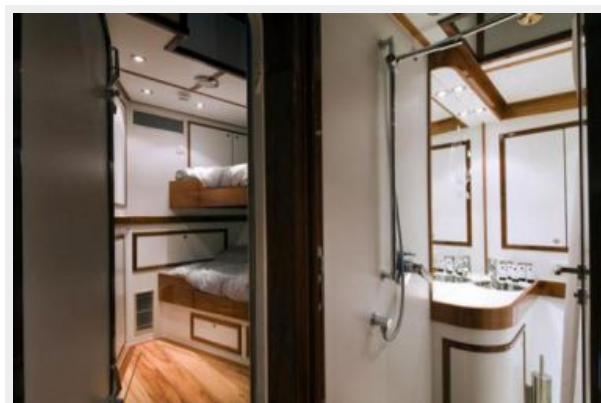
## Guest Cabin (1)



## Guest Cabin (2)



## Crew Cabin



# КОНТАКТЫ

---

Андрей Шестаков (Andrey Shestakov) – ведущий яхтенный брокер отдела продаж яхт и судов компании Shestakov Yacht Sales Inc. Официальный представитель Shestakov Yacht Sales Inc. для русскоговорящих клиентов в центральном офисе компании в Майами/Форт Лодердейл/Флорида/США.

## Контактная информация

---

Email: [andrey@shestakovyachtsales.com](mailto:andrey@shestakovyachtsales.com)

Web: [shestakovyachtsales.com](http://shestakovyachtsales.com)

## Телефоны

---

Краснодарский край: **+7(918)465-66-44**

США, Майами, Флорида: **+1(954)274-4435**

## Время работы

---

Понедельник – Суббота: **9:00 - 21:00**  
EDT

Воскресенье: **Закрето**

## Адрес

---



Harbour Towne Marina, 850 NE 3rd St,  
STE 213, Dania, FL 33004