

ANGIE — SUNSEEKER



Builder: SUNSEEKER

Year Built: 2002

Model: Motor Yacht

Price: PRICE ON APPLICATION

Location: United States

LOA: 74' 0" (22.56m)

Beam: 17' 10" (5.44m)

Max Draft: 4' 11" (1.50m)

Cruise Speed: 23 Kts. (26 MPH)

Max Speed: 34 Kts. (39 MPH)

Our experienced yacht broker, Andrey Shestakov, will help you choose and buy a yacht that best suits your needs **Angie — SUNSEEKER** from our catalogue. Presently, at Shestakov Yacht Sales Inc., we have a wide variety of yachts available on our sale's list. We also work in close contact with all the big yacht manufacturers from all over the world.

If you would like to buy a yacht **Angie — SUNSEEKER** or would like help answering any questions concerning purchasing, selling or chartering a yacht, please call **+1(954)274-4435**

TABLE OF CONTENTS

TABLE OF CONTENTS	2
SPECIFICATIONS	4
Basic Information	4
Dimensions	4
Speed, Capacities and Weight	4
Accommodations	4
Hull and Deck Information	4
Engine Information	5
DETAILED INFORMATION	6
Accommodations	6
Master Stateroom	6
VIP Stateroom	6
Port & Starboard Guest Staterooms	6
Crew Cabin	7
Main Salon	7
Galley	8
Deck & Flybridge	8
Electronics & Upper Helm	8
Electronics & Lower Helm	9
Electrical System	9
Engine /Mechanical Equipment	9
Exclusions	10
Disclaimer	10
PHOTOS	11
CONTACTS	18
Contact details	18
Telephones	18
Office hours	18

Address

18

SPECIFICATIONS

Basic Information

Category: Motor Yacht

Sub Category: Flybridge

Model Year: 2002

Year Built: 2002

Country: United States

Fly Bridge: Yes

Cockpit: Yes

Dimensions

LOA: 74' 0" (22.56m)

Beam: 17' 10" (5.44m)

Max Draft: 4' 11" (1.50m)

Speed, Capacities and Weight

Cruise Speed: 23 Kts. (26 MPH)

Max Speed: 34 Kts. (39 MPH)

Displacement: 81600 Pounds

Accommodations

Total Cabins: 4

Total Heads: 3

Captain Cabin: True

Hull and Deck Information

Hull Material: Fiberglass

Engine Information

Engines: 2

Manufacturer: MAN

Model: LE406V12

Engine Type: Inboard

Fuel Type: Diesel

DETAILED INFORMATION

Accommodations

There are 4 guest staterooms (Master, VIP and Port & Starboard) and 3 guest heads. There is a crew cabin aft with 2 berths and a head and shower.

Master Stateroom

The master stateroom is midship and privately accessed through the salon. It has a king bed, a settee and vanity, built-in drawer storage, and a large cedar-lined closet with mirrored doors. There are opening ports with screens and curtains, as well as overhead and reading lighting. This suite has its own head with shower, Bathtub with Jacuzzi jets.

- Large hanging closet
- TV Flat screen Samsung
- Queen berth with storage below
- Accent puck lighting throughout
- Roman room darkening privacy shades
- Twin cherry nightstands with drawer storage
- Desk/makeup vanity with generous cabinet storage
- Built in entertainment center with TV, DVD, CD. etc and storage

VIP Stateroom

Completely forward is a VIP stateroom with a queen bed, built-in drawer storage, overhead lockers, wardrobes with mirrored doors, and opening port lights with screens and curtains. 24 volt lighting is provided in the form of overhead treatment and reading lamps. The ensuite head has a shower with acrylic door and teak grating, and wash basin. A TV/VCR/CD player is also included.

- Reading lights
- Full wardrobe closet
- TV Flat screen Sharp Aquos
- Queen berth with storage below
- Additional built in drawer and cabinet storage
- Built in entertainment center with TV, DVD, CD. etc and storage

Port & Starboard Guest Staterooms

Two-bedded starboard stateroom have built-in drawer storage, a wardrobe and bedside table.

One-bed Port stateroom have built-in drawer storage, a wardrobe and office side table. Opening port lights have screens and curtains. They are equipped with 24 volt overhead and reading lighting and a TV/VCR/CD player combo. These staterooms share a head with shower and wash basin.

- Reading lights
- Full wardrobe closet
- TV Flat screen Sharp Aquos
- Built in entertainment center with TV, DVD, CD. etc and storage

Crew Cabin

The privately accessed crew cabin aft is equipped with (2) twin sized berths, a hanging locker, a mirrored vanity unit and a head with shower and wash basin. Overhead and reading lighting, air conditioning, opening port light with screen, TV/VCR are also provided.

- Reading lights
- Full wardrobe closet
- Washer & Dryer Miele Novotronic W1818 & T 1520
- Built in entertainment center with TV, DVD, CD. etc and storage

Main Salon

The main salon is very spacious and comfortably appointed with mirror image settees, built-in cabinetry, a full entertainment system and large side windows with window treatments. Aft is access to the aft deck through a sliding door and at the forward end of the salon is the raised galley and dining area. This arrangement never takes the cook away from the action and it is of true benefit for large parties.

- Climate controls
- TV Flat screen Samsung
- Stairwell up to flybridge
- Bose Sound speaker system
- Valences with darkening shades
- Lower aft seating area opposite galley
- Built in chart table forward and to port
- Port side table with entertainment center built-in
- New carpeting throughout as well as in staterooms
- Centerline companionway down to guest staterooms
- Stairwell access to separate and private owner's suite
- Helm forward and to starboard with electric side deck access door
- Upper saloon featuring 2 dining areas with tables and built in storage below

Galley

The galley is very nicely appointed with an attractive combination of avonite and wood and offers the following equipment:

- Accent lighting
- Frigidaire dishwasher
- Sharp convection oven
- Generous cabinet storage
- Glassware storage cabinet
- Subzero fridge and freezer
- Ceram 4 burner Glass top stove
- Dual SS sinks with granite inserts
- Granite wrap-around counter and floor

Deck & Flybridge

The sundeck features a second full helm station, multiple seating areas, sun pad/lounge areas, custom navy blue canvas bimini top, sink, and refrigerator. You also have easy access from the exterior aft main deck. Both access points have protective hatches great for children safety or that of the guests when underway

- Electric windlass
- Teak steps to flybridge
- Anchor with chain rode
- Hot and cold shower aft
- Bow sunbathing cushions
- Fresh water dockside inlet
- Side rope lockers in aft deck
- Radar Arch with accent lighting
- Sunpad on flybridge and forepeak
- Stainless steel rail and stanchions
- Gaggenau grill, sink, and fridge on FB
- Dining table with wraparound seating on FB
- Flybridge, side decks and cockpit teak decking
- Glendinning shore power cord retrieval system
- Fresh water deck washdown forward and aft with hose kit
- Aft-deck teak dining table with chairs and built in transom seating

Electronics & Upper Helm

- Compass

- VHF Radio
- 12V outlet
- Bow thruster control
- Seafire system indicator
- Raymarine Autopilot/GPS
- Sony sound system control
- Electronic engine controls
- Remote spotlight controller
- Raytheon ST60 depth sounder
- Full instrumentation and warning system

Electronics & Lower Helm

- Compass
- VHF Radio
- 12V outlet
- Bow thruster control
- Seafire system indicator
- Raymarine Autopilot/GPS
- Sony sound system control
- Electronic engine controls
- Remote spotlight controller
- Raytheon ST60 depth sounder
- Full instrumentation and warning system

Electrical System

- Galvanic Isolator
- Electric water heater
- Central vacuuming system
- Low level lighting on flybridge
- Glendinning power cable retractor
- Reverse cycle air conditioning throughout
- 2 Generators Kohler Marine 19 EFOZ 20KW
- 110v electrical system with circuit breakers
- Dimmer switched interior lighting throughout
- 24v and 12V electrical systems with circuit breakers
- Dedicated battery banks for engine start, house, and genset start
- Automatic battery chargers for 12v and 24v circuits PT-40CE and PT 24-95F

Engine /Mechanical Equipment

- Galvanic Isolator
- Electric water heater
- Central vacuuming system
- Low level lighting on flybridge
- Glendinning power cable retractor
- Reverse cycle air conditioning throughout
- 2 Generators Kohler Marine 19 EFOZ 20KW
- 110v electrical system with circuit breakers
- ASEA Power converter model AC12 120/240
- Dimmer switched interior lighting throughout
- 24v and 12V electrical systems with circuit breakers
- Dedicated battery banks for engine start, house, and genset start
- Automatic battery chargers for 12v and 24v circuits PT-40CE and PT 24-95F

Exclusions

Owner's personal belongings.

Disclaimer

The Company offers the details of this vessel or yacht in good faith but cannot guarantee or warrant the accuracy of this information nor warrant the condition of the vessel. A buyer should instruct his representatives, agents, or his surveyors, to investigate such details as the buyer desires validated. This vessel or yacht is offered subject to prior sale, price change, or withdrawal without notice.

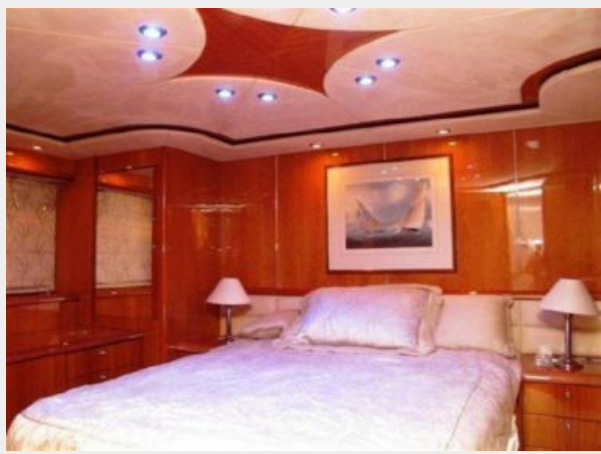
PHOTOS















CONTACTS

Andrey Shestakov, leading yacht broker of the sales department of Shestakov Yacht Sales Inc. Shestakov Yacht Sales Inc., the official representative of the Miami/Fort Lauderdale FL headquarters.

Contact details

Email: andrey@shestakovyachtsales.com

Web: shestakovyachtsales.com/en/

Telephones

USA: +1(954)274-4435

Office hours

Monday – Saturday: **9:00 - 21:00** EDT

Sunday: **closed**

Address



Harbour Towne Marina, 850 NE 3rd St,
STE 213, Dania, FL 33004