

KENA MARIE — DEBIRS YACHTS



Судостроитель: DEBIRS YACHTS

Год постройки: 2007

Модель: Моторная яхта

Цена: **ЦЕНА ЯХТЫ ПО ЗАПРОСУ**

Местонахождение: United States

Длина общая: 85' 0" (25.91m)

Ширина: 19' 8" (5.99m)

Макс. осадка: 6' 2" (1.88m)

Крейс. скорость: 23 Kts. (26 MPH)

Макс. скорость: 27 Kts. (31 MPH)

Купить **KENA MARIE — DEBIRS YACHTS** а также выбрать подходящую вам яхту из нашего каталога яхт вам поможет опытный яхтенный брокер Андрей Шестаков. На сегодняшний день компания **Shestakov Yacht Sales Inc.** имеет большое количество яхт в собственном списке продаж, а также тесно сотрудничает со всеми крупными яхтенными производителями по всему миру.

Для того чтобы купить яхту **KENA MARIE — DEBIRS YACHTS** а также проконсультироваться по любому вопросу связанному с покупкой, продажей, чартером яхт позвоните по телефону **+7(918)465-66-44**.

ОГЛАВЛЕНИЕ

ОГЛАВЛЕНИЕ	2
ХАРАКТЕРИСТИКИ	4
Основная информация	4
Размеры	4
Скорость, вместимость и масса	4
Размещение	4
Корпус и палуба	4
Информация о двигателе	5
ПОДРОБНОЕ ОПИСАНИЕ	6
Key Features	6
2011 Upgrades	6
Galley	6
Salon	7
Audio/Visual Entertainment Systems	7
Office Equipment	8
Master Cabin	8
VIP Cabin	8
Starboard Guest Cabin	8
Laundry	9
Crew Cabin	9
Pilothouse	9
Communication Equipment	9
Navigation Equipment	9
Flybridge	10
Aft Deck	10
Deck & Hull	10
Engine & Mechanical	11
Auxiliary Machinery & Electrical System	11

Safety & Security Equipment	12
Additional DeBirs Information	12
Исключения	13
Отказ от ответственности	13
ФОТОГРАФИИ	14
Custom Bridge Bar	17
Office On Main Deck Level	21
VIP Stateroom	24
КОНТАКТЫ	29
Контактная информация	29
Телефоны	29
Время работы	29
Адрес	29

ХАРАКТЕРИСТИКИ

Основная информация

Тип судна: Моторная яхта

Подкатегория: Flybridge

Модельный год: 2007

Год постройки: 2007

Страна: United States

Кубрик: Да

Размеры

Длина общая: 85' 0" (25.91m)

Длина по ватерлинии: 72' 5" (22.07m)

Ширина: 19' 8" (5.99m)

Макс. осадка: 6' 2" (1.88m)

Скорость, вместимость и масса

Крейс. скорость: 23 Kts. (26 MPH)

Макс. скорость: 27 Kts. (31 MPH)

Водоизмещение: 150000 Pounds

Вместимость воды: 343 Gallons

Вместимость сточного бака: 79 Gallons

Объем топливного бака: 1981 Gallons

Размещение

Всего кают: 4

Всего коек: 8

Всего ком. состава: 4

Корпус и палуба

Материал корпуса: Fiberglass

Информация о двигателе

Двигатели: 2

Производитель: MTU

Тип двигателя: Inboard

Тип топлива: Diesel

ПОДРОБНОЕ ОПИСАНИЕ

Key Features

ZERO SPEED STABILIZERS!

KENA MARIE is a custom built yacht in pristine/ new condition with very low hours. In 2010 & 2011 she underwent an extensive refit at a value of \$600,000 in upgrades including a custom hardtop built by Pipe Welders of Fort Lauderdale. She has a proven GPR Hull making her a great sea boat, and is designed using only the highest quality custom silk interior fabrics and panelling with high polished Stainless Steel works throughout. An Atlas Global Power Converter is perfect for the World Traveller. There is a very extensive supply of Safety and Backup Equipment. The creator of this Yacht spared absolutely no expense and cut no corners when creating her. Only top of the line materials were used all the way from the electronics, computer and sound systems, to the designer interior and so much more. This is a must see Motor Yacht!

2011 Upgrades

- 2011 New \$7000 grill on fly bridge
- 2011 New led lights in engine room
- 2011 New MAKO MARINE black water pump
- 2011 New BALDOR water maker pump
- 2011 New SCOTT raw water a/c pump
- 2011 New 24 V 100 amp battery charger
- 2011 New a/c accumulation pump
- 2011 New fuel transfer pump
- 2011 New cable master
- 2011 Water maker serviced on 7-15-11
- 2011 Props are redone by Precision they are class S upgrade from class 3

Galley

- GE Electric built-in oven
- GE flush glass top stove
- Large Stainless Steel sink
- Whirlpool Convertible Range Hood
- GE built-in Dish Washer
- GE Built-in Microwave/ Digital
- GE 30 f S/S w/ LCD TV
- GE Refrigerator

- GE Freezer
- Port Windows
- GE Microwave/Digital
- U-LINE Ice Maker
- Large Pantry and Cupboard

Salon

- Spiral Designer staircase to lower deck staterooms
- Sharp Plasma 52" TV
- KVH Tracvision 6 Satellite TV
- Antenna System DVB-compatible
- DIRECT TV
- 2 x Pioneer Home Theatre System w/ subwoofers and speakers throughout
- Dining settee with three extra chairs
- Large sofa with lounge sectional
- Designer coffee table
- Designer ceiling and lighting system

Bar:

- Two high top chairs
- Frigonautica refrigerator
- U-LINE Ice Maker
- Tinted sliding glass doors to large aft deck

Audio/Visual Entertainment Systems

Televisions

- 1 x Sharp Plasma 52" - LC-520624
- 2 x Sharp Plasma 37" - LC-37SH20U
- 1 x Phillips LCD 23" - 23PF530/28
- 2 x Sceptre LCD 20"
- HDTV Converter
- GE 30 f S/S w/ LCD TV – In Galley

Video Recorders & Players

- 2 x Pioneer DVD Home Theatre System w/ subwoofers and speakers throughout
- 5 x Pioneer CD/DVD Player DV-600 AV-S
- 1 x Marine AV Waterproof / CD Player - AQCD1

Stereo Systems: 2x Pioneer Home Theatre System w/ subwoofers and speakers

throughout

Satellite TV

- KVH TracVision 6 Satellite TV
- Antenna System DVB-compatible
- DIRECT TV D12-300

Office Equipment

- Computers: Yachtica Computer Yacht Management System

Master Cabin

- Roomy walkaround centerline queen berth
- En Suite Head
- Large Vanity area
- Flat screen TV
- 2x Cedar lined closets
- Storage drawers
- Digital ship safe

VIP Cabin

- Located forward
- Centerline Queen Berth
- Flat screen TV
- Reading lights
- Overhead hatch
- Designer ceiling
- Designer soft goods
- Cedar lined Hanging closet
- Nightstands
- Drawers
- Manual Ship Safe

Starboard Guest Cabin

- Designer soft goods, drapery
- Flat screen TV
- Cedar lined hanging closet
- Drawers
- Manual Ship Safe

Laundry

- Haier Washing Machine w/ 11lbs. capacity
- Haier Dryer w/ 11lbs. capacity

Crew Cabin

- Single Berth
- Convertible sofa
- Manual Ship Safe
- Ray 215e DSC VHF Transceiver
- Intercom System: Ray 430 Loudhailer/Marine intercom

Pilothouse

- Large Sky lounge Pilothouse
- Black Leather Captains Chair
- Fully Furnished
- Ray 215e DSC VHF Transceiver
- Intercom System: Ray 430 Loudhailer/Marine intercom
- Magnetic Compass: Danforth 3 3/4" Compass Series
- Ray Marine multi color E120 display
- Raystar 125 /Plus 1 x PC based Yachtica Chart Plotter

Communication Equipment

- Cellular System: Syrens Onboard WiFi EC-Series Mobile Wi-Fi

Navigation Equipment

- ST290 Autopilot and Standard VDO Style
- Auto Pilot: ST8002 w/ ST6002 remote
- Bow Thruster: ARCTURUSMARINE - TRAC 12" Hydraulic 38hp

- Stabilizers: ARCTURUSMARINE - TRAC 300 9.0
- Bilge Pump: G&R ACM 401BT 220 Lt/min
- VHF: (3x) Ray 215e DSC VHF Transceivers (Crew Area, Pilot House, Fly Bridge)
- Telephone Exchange: VTECH Broadband – IP 8100-2
- Intercom System: Three (3) Ray 430 Loudhailer/Marine intercom in Crew Area, Pilothouse & Fly Bridge
- Magnetic Compass: 2 x Danforth 3 3/4" / 1- Pilot House, 1-Fly Bridge
- Gyro Compass: Auto Pilot S3G Core Pak
- Ray Marine ST 290 - Speed and Depth
- 2 x Ray Marine multi color E120 display 1 @ Pilot House, 1 @ Fly Bridge
- 4kw/4ft open array scanner
- 2 x Raystar 125 /1-Pilot House, 1-Fly Bridge /Plus 1 x PC based Yachtica Chart Plotter
- Weather Fax: Weather Dock
- Mcmurdo – ICS NAV6 Navtex
- 2 x Ray Marine Wind Display ST-290 Weather dock

Flybridge

- Ray 215e DSC VHF Transceiver
- Magnetic Compass: Danforth 3 3/4" Compass Series
- Raystar 125 /Plus 1 x PC based Yachtica Chart Plotter
- Intercom System: Ray 430 Loudhailer/Marine intercom
- Ray Marine multi color E120 display
- Bimini Top
- Teak deck
- Two L-shaped facing sofas w/ long teak tables Port/strbrd
- Two Teak Padded Lounge Chairs on aft FB sun deck
- Bar w/ 2 built-in stools w/ SS stations on aft sun deck
- Stainless Steel safety rails
- Fiberglass w/ teak top staircase to lower aft deck

Aft Deck

- Hard top and Bimini Top Awning
- Teak Deck
- U-shaped Transom Sofa with Hi-Lo teak table
- Stainless Steel safety rail
- Large Swim Platform w/ tall Stainless Steel safety rails

Deck & Hull

- MUIR vertical windless-24V - VCR4500
- 2 x MUIR aft capstan drums - 24V VC4000
- MUIR Claw Anchor 80kg – Galvanized
- 328ft Grade L Galvanized Chain
- Boat Crane & Davits: Steelhead Marine CT900
- Side Ladders:

*Passerelle: OPACMARE Telescoping Gangway 24V

*MARQUIPT Sea Stairs

*Lazarette portable S/S ladder with teak steps

- Swim Platform: Teak Deck with Stainless Steel Tender base
- Awning: Bimini Top Aft Deck Area and Bridge
- Tender: 11.5 Zodiac Jet Boat – 12hrs, brand new

Engine & Mechanical

- Twin 1,500hp MTU Diesel Engines Type 10V 2000 M 93/@2450 rpm
- Stabilizers: Zero Speed Trac System
- ZF-MATHERS ENGINE GEARBOX ZF2050/R.R. 2.519
- Shafts & Propellers: Tail shaft: Dimensions- 3.9 in. diameter x 265 in. overall length
Stainless Steel grade Temet 25
- Water jets: 39.37 in. diameter x 41.3 in. pitch x 5 blades, NiAlBr AB2
- 2 x Separ Dual Fuel water separator (1 x per engine)
- Sewage Treatment Systems: HEADHUNTER tank sentry system
- WC's: 5 x TECMA silence standard toilet system - NC24B
- Air Conditioning: MARINE AIR - MCW 4 Ton, 3 Compressors, and 14 Fan Coils with different BTU's that equal 116,000 btu'S

Auxiliary Machinery & Electrical System

- Generators: (1) Northern Lights *M944 30kw* / (1) Northern Lights *M864 25kw*
- Generator Hours: Port: 578 approx. February 2010 / Strbrd: 583 approx. February 2010
- Electricity: AC- 220/110 DC 24V / 50 KHZ/60 KHZ (Full Global Conversion by Atlas)
- Inverter: MASTER VOLT inverters 24V/110V-60HZ

- Converter: Atlas Global Power Converter 220/110 50/60HZ
- Batteries:
 - *4 x 5 BMASTER VOLT Batteries/Engine
 - *MVG 12V 200 Ah Gel
 - *8 x MASTER VOLT Batteries/Engine Control
 - *2 x MASTER VOLT Batteries/each Generator
 - *MVG 12V 120 Ah Gel
 - *12 x MASTER VOLT House/Service Batteries
 - *2 x MASTER VOLT Batteries / Navigation Battery
 - *MVG 12V 120 Ah Gel

Battery Chargers:

- 2 x Master Volt C3 110V/60Hz for Service Batteries
- 2 x Master Volt C3 110/60Hz for Engine Batteries
- 2 x Master Volt C2 110/60Hz for Navigation and Gen Set Batteries

Safety & Security Equipment

- Safety: Fire Axe, Fire Blanket, and Full US Coast Guard Safety Package
- Firefighting: PYROSHIELD – Arousal Fire Suppression System
- Portable Fire Extinguishers: 12 Total
- Audio and Visual Alarms:
 - *2 x Heat, 12 x Smoke, 4 x Fire in various areas of the Yacht
- G&R ACM401BT 24V Main Fire Pump
- G&R Engine Driven Pump
- G&R Emergency Bilge Pump 230V, hose with Fire Nozzle
- G&R Maxi Sub Emergency Bilge Pump 24V

Additional DeBirs Information

The De Birs 85 RPH (26m) interior comes in a dark wood known as the "Elegance Interior" or in a light wood known as the "Modern Interior." This product has proven to be a worldwide success and was recognized as one of the top five best designed Super Yachts in the world. The Main Salon's open plan & spacious layout offers a full bar/owner's galley, a dining table that also

converts into a coffee & game table arrangement plus a spacious sitting area that allows the owner to entertain a large number of guests. Moreover, there is the popular Forward Salon that offers several functional areas which include a private sitting area/family room, a home theatre and the owner's office; all in one!

Исключения

При продаже яхты исключаются личные вещи владельца.

Отказ от ответственности

Компания предоставляет описание судна или яхты добросовестно, но не может гарантировать точность этой информации, а также не ручается за техническое состояние. Покупатель должен проинструктировать своих агентов или оценщиков исследовать представленную информацию более подробно, по собственному желанию. Продажа судна или яхты, изменение цены или снятие с продажи будет происходить без предварительного уведомления.

ФОТОГРАФИИ







Custom Bridge Bar









Office On Main Deck Level

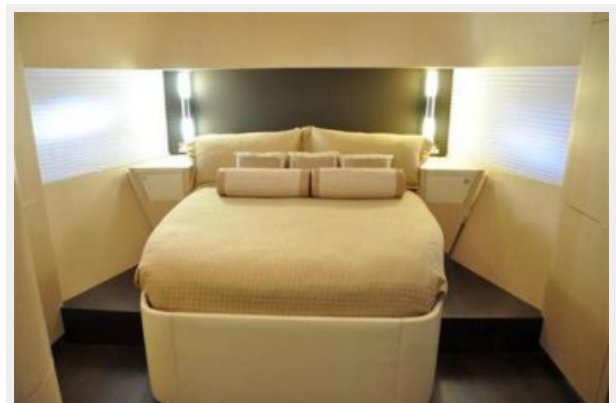




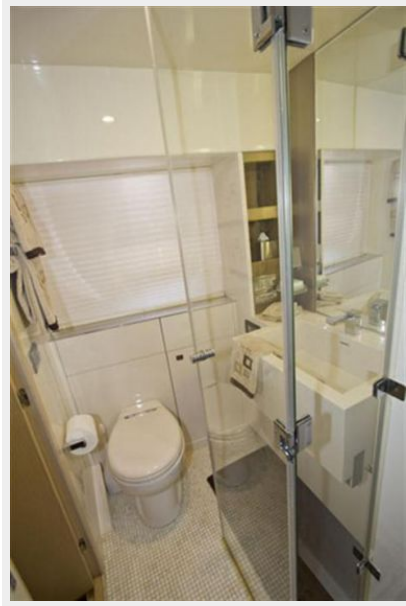




VIP Stateroom











КОНТАКТЫ

Андрей Шестаков (Andrey Shestakov) – ведущий яхтенный брокер отдела продаж яхт и судов компании Shestakov Yacht Sales Inc. Официальный представитель Shestakov Yacht Sales Inc. для русскоговорящих клиентов в центральном офисе компании в Майами/Форт Лодердейл/Флорида/США.

Контактная информация

Email: andrey@shestakovyachtsales.com

Web: shestakovyachtsales.com

Телефоны

Краснодарский край: **+7(918)465-66-44**

США, Майами, Флорида: **+1(954)274-4435**

Время работы

Понедельник – Суббота: **9:00 - 21:00**
EDT

Воскресенье: **Закрето**

Адрес



Harbour Towne Marina, 850 NE 3rd St,
STE 213, Dania, FL 33004