

47' CHEOY LEE LUDERS KETCH — CHEOY LEE



Builder: CHEOY LEE

Year Built: 1973

Model: Cruising Sailboat

Price: PRICE ON APPLICATION

Location: United States

LOA: 46' 0" (14.02m)

Beam: 12' 3" (3.71m)

Max Draft: 6' 11" (2.08m)

Cruise Speed: 6 Kts. (7 MPH)

Max Speed: 7 Kts. (8 MPH)

Our experienced yacht broker, Andrey Shestakov, will help you choose and buy a yacht that best suits your needs 47' Cheoy Lee Luders ketch — CHEOY LEE from our catalogue. Presently, at Shestakov Yacht Sales Inc., we have a wide variety of yachts available on our sale's list. We also work in close contact with all the big yacht manufacturers from all over the world.

If you would like to buy a yacht 47' Cheoy Lee Luders ketch — CHEOY LEE or would like help answering any questions concerning purchasing, selling or chartering a yacht, please call +1(954)274-4435

TABLE OF CONTENTS

TABLE OF CONTENTS	2
SPECIFICATIONS	4
Overview	4
Basic Information	4
Dimensions	4
Speed, Capacities and Weight	4
Accommodations	5
Hull and Deck Information	5
Engine Information	5
DETAILED INFORMATION	6
Accommodations	6
Sails, Deck and Mechanical	6
Electrical and Electronics	7
Additional Information	8
Exclusions	8
Disclaimer	8
PHOTOS	10
Cockpit Instruments	10
Aft Quarter Berths	10
Spacious Galley	10
Main Salon	10
Large Freezer/Fridge	10
Quality Navigation Station	10
Forward V Berth	11
Undated Winches	11
Electric Mainsail Halyard Winch	11
Rebuilt Engine - 2010 Westerbeke	11
Hull	11

Nice Canvas - Full Enclosure	11
Comfortable V Berth	12
Decks Forward	12
Galley	12
Helm Station	12
In Slings	12
At the Dock	12
Proud Bow Lines	13
Classic Stern	13
CONTACTS	14
Contact details	14
Telephones	14
Office hours	14
Address	14

SPECIFICATIONS

Overview

Built in 1973 by Cheoy Lee of traditional design, She is a solid fiberglass, molded hull and a 3/4 length keel with skeg hung rudder and external lead ballast.

Built to sail anywhere with safety and comfort the Cheoy Lee 47 is classic in looks and solidly built with an interior that has volumes of storage space and good off-shore performance.

This particular Cheoy Lee 47 has been lovingly cared for over the past 22 years by one family and has been professionally stored and covered every winter. The interior looks very good and she is ready to sail away this spring to wherever you might wish

Basic Information

Category: Cruising Sailboat

Model Year: 1973

Year Built: 1973

Country: United States

Dimensions

LOA: 46' 0" (14.02m)

Beam: 12' 3" (3.71m)

Max Draft: 6' 11" (2.08m)

Speed, Capacities and Weight

Cruise Speed: 6 Kts. (7 MPH)

Max Speed: 7 Kts. (8 MPH)

Displacement: 27000 Pounds

Water Capacity: 100 Gallons

Holding Tank: 20 Gallons

Fuel Capacity: 105 Gallons

Accommodations

Total Cabins: 2

Total Heads: 2

Hull and Deck Information

Hull Material: Fiberglass

Engine Information

Engines: 1

Manufacturer: Westerbeke

Model: W-54

Engine Type: Inboard

Fuel Type: Diesel

DETAILED INFORMATION

Accommodations

The aft companionway from the cockpit provides access to two single outboard berths and a full head/shower. Hanging locker and drawers for each berth.

Forward through a doorway there is a large chart table, navigation station and spacious deep ice box power by SEAFROST.

To port opposite the ice box is a U shaped galley with three burner SHIPMATE stove and oven and stainless sink with plenty of additional storage of shelves and cupboards.

Forward of the galley and nav station is the main salon with a drop leaf table on centerline and outboard sea berths to port and starboard. The in board table seats pull out to create additional berths if required.

Forward the main salon is a large V berth and additional full head with shower.

All interior surfaces are brightly varnished teak and mahogany with a teak cabin sole.

Propane FORCE 10 cabin heater.

Sails, Deck and Mechanical

Mainsail good condition

140 Genoa - good condition

Mizzen - fair condition

TWO spinnakers - asym with sock and symmetrical - both very good

Inner Furling Working Jib

New Standing Rigging - 2005

New Lifelines

New Feathering 3 Blade Prop

Upgraded Winches.

Electric Main Halyard winch

Fully enclosed canvas for cockpit

Running Rigging very good

\$7,000 Engine rebuild 2010

Electrical and Electronics

ELECTRICAL

Four Batteries - new 2008

AC and DC Electrical Distribution Panel

SVS Battery Monitoring System

SEAFROST DC refrigeration also powered off of Engine

New Compressor for SEAFROST

Electric Windlass

Jensen AM/FM radio with CD 6 disc changer

Sirius Radio

Cockpit and Mainsalon speakers

Forward Deck Washdown Pump

HONDA 2000 W electric generator

ELECTRONICS

Autopilot - Robertson AP300X

FURUNO radar

Horizon GPS 150 chartplotter

B & G Depth

B & G Wind speed

Icom M127 VHF

SEA 322 SSB

Additional Information

Four propane tanks

Cockpit cushions

CQR and Danforth Anchors

200 feet of chain with rode

New overhead opening hatch for mainsalon

Ablative Bottom Paint - good condition

Exclusions

Owner's personal belongings.

Disclaimer

The Company offers the details of this vessel or yacht in good faith but cannot guarantee or warrant the accuracy of this information nor warrant the condition of the vessel. A buyer should instruct his representatives, agents, or his surveyors, to investigate such details as the buyer desires validated. This vessel or yacht is offered subject to prior sale, price change, or withdrawal

without notice.

PHOTOS

Cockpit Instruments



Aft Quarter Berths



Spacious Galley



Main Salon



Large Freezer/Fridge



Quality Navigation Station



Forward V Berth



Undated Winches



Electric Mainsail Halyard Winch



Rebuilt Engine - 2010 Westerbeke



Hull



Nice Canvas - Full Enclosure



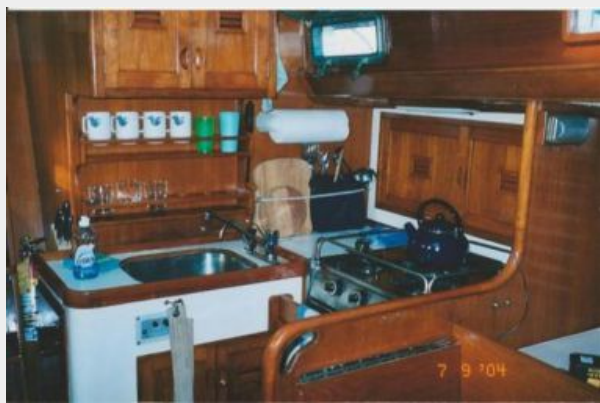
Comfortable V Berth



Decks Forward



Galley



Helm Station



In Slings



At the Dock



Proud Bow Lines



Classic Stern



CONTACTS

Andrey Shestakov, leading yacht broker of the sales department of Shestakov Yacht Sales Inc. Shestakov Yacht Sales Inc., the official representative of the Miami/Fort Lauderdale FL headquarters.

Contact details

Email: andrey@shestakovyachtsales.com

Web: shestakovyachtsales.com/en/

Telephones

USA: +1(954)274-4435

Office hours

Monday – Saturday: **9:00 - 21:00** EDT

Sunday: **closed**

Address



Harbour Towne Marina, 850 NE 3rd St,
STE 213, Dania, FL 33004