

## BRAVEHEART — SWEDESHIP



**Судостроитель:** SWEDESHIP

**Год постройки:** 1989

**Модель:** Моторная яхта

**Цена:** **ЦЕНА ЯХТЫ ПО ЗАПРОСУ**

**Местонахождение:** Hong Kong

**Длина общая:** 162' 1" (49.40m)

**Ширина:** 28' 7" (8.70m)

**Макс. осадка:** 8' 11" (2.70m)

**Крейс. скорость:** 10 Kts. (12 MPH)

**Макс. скорость:** 12 Kts. (14 MPH)

Купить **BRAVEHEART — SWEDESHIP** а также выбрать подходящую вам яхту из нашего каталога яхт вам поможет опытный яхтенный брокер Андрей Шестаков. На сегодняшний день компания **Shestakov Yacht Sales Inc.** имеет большое количество яхт в собственном списке продаж, а также тесно сотрудничает со всеми крупными яхтенными производителями по всему миру.

Для того чтобы купить яхту **BRAVEHEART — SWEDESHIP** а также проконсультироваться по любому вопросу связанному с покупкой, продажей, чартером яхт позвоните по телефону **+7(918)465-66-44**.

# ОГЛАВЛЕНИЕ

ОГЛАВЛЕНИЕ	2
ХАРАКТЕРИСТИКИ	4
Обзор	4
Основная информация	5
Размеры	5
Скорость, вместимость и масса	5
Размещение	5
Корпус и палуба	6
Информация о двигателе	6
ПОДРОБНОЕ ОПИСАНИЕ	7
Accommodations	7
Исключения	17
Отказ от ответственности	17
ФОТОГРАФИИ	18
Top Deck	18
Aft Deck	18
Boat Deck	18
Alfresco Dining	18
Salon	18
Dining	18
Owners Cabin	19
Bathroom	19
Galley	19
Guest Cabin	19
КОНТАКТЫ	20
Контактная информация	20
Телефоны	20
Время работы	20

---

Адрес

20

---

# ХАРАКТЕРИСТИКИ

---

## Обзор

---

“**Braveheart**” has been maintained regardless of cost. A complete W6 MTU overhaul was carried out in September 2011. Both 145KW Northern Light generators were replaced new in September 2011. All KaMeWa controls and electronics were updated in 2012 and the hydraulics were serviced at the same time. The whole galley was rebuilt with new equipment and the sky salon modified in 2011. Previously a successful charter yacht, Braveheart has timeless lines and an ideal choice for you if you are seeking a tri deck yacht.

The owner has reduced price by half a Million demonstrating his serious intent to sell. Now asking USD6,000,000. Call or email for full specification or to arrange an inspection. At this price she will sell soon. Take advantage of this fantastic deal !!

NB: This vessel has been personally inspected by our broker, Miles Clark. We are the owner's WORLD-WIDE CENTRAL AGENTS appointed to sell the vessel. We have a full inventory and extensive photographs of the vessel which we will be pleased to forward to you upon request. Please email us for further information.

### ***Disclaimer***

Yachts are offered subject to being unsold. The above information is given in good faith but it's accuracy cannot be guaranteed and, therefore, cannot be used for contractual purposes.

## Основная информация

Тип судна: Моторная яхта

Подкатегория: Водоизмещение

Модельный год: 1989

Год постройки: 1989

Год обновления: 2011

Страна: Hong Kong

Открытая палуба мостика: Да

## Размеры

Длина общая: 162' 1" (49.40m)

Ширина: 28' 7" (8.70m)

Макс. осадка: 8' 11" (2.70m)

## Скорость, вместимость и масса

Крейс. скорость: 10 Kts. (12 MPH)

Крейсерская скорость поворота: 1400 Kts.

Дальность на крейсерской скорости:  
3800

Макс. скорость: 12 Kts. (14 MPH)

Макс. скорость поворота: 1750 Kts.

Вместимость воды: 1294.4430548  
Gallons

Объем топливного бака: 26997.06285414  
Gallons

## Размещение

Всего кают: 6

Всего коек: 12

Спальные места: 12

Всего ком. состава: 7

Каюта капитана: Да

Койки экипажа: 11

Спальных мест экипажа: 11

Комм. состав экипажа: 5

## Корпус и палуба

---

**Материал корпуса:** Steel

**Материал палубы:** Teak

**Комплектация корпуса:** Full  
Displacement

## Информация о двигателе

---

**Двигатели:** 2

**Производитель:** MTU

**Модель:** 12V 396 TB 93

**Тип двигателя:** Inboard

**Тип топлива:** Diesel

---

# ПОДРОБНОЕ ОПИСАНИЕ

---

## Accommodations

---

### Upper Sundeck

The Sundeck has large sunning areas, a bar with refrigerator, ice maker and sink, BBQ and two dining tables (each seating 8-10 people), and a dinette that seats three to four additional guests. A staircase on the starboard aft side leads down to the Boat Deck.

### Boat Deck

Located forward on the Boat Deck is the bridge with full outside walk-a-rounds. A centerline control position inside with Recaro chair. A separate Canman control unit on umbilical cable with main engine and bow thruster controls replaces the old wing stations. Inside the bridge is an L-shaped settee against the aft bulkhead to port. The **Communication and Navigation Room** is aft to starboard complete with all required equipment and a chart table with extensive chart storage below. Aft of the Wheelhouse to port is the **Captain's Accommodation**, complete with an office and a settee separating the desk from the queen-size bed. Aft of the bed is the ensuite bathroom and shower. Moving just aft of the Communication and Navigation Room on the starboard side is the boat deck's day head / powder room. Aft of the day head is a separate Shower Room. Moving further aft leads to the **Skylounge/Cabin**, which offers full-length vertical windows, an entertainment system, with Flat Screen TV and a DVD/CD player, Sat-TV, Amp and I-pod connection. This lounge is configured to act as a 6th Stateroom but could be converted to a bar and lounge.

Aft and outside of the Sky Lounge is another dining area. A large oval table seating twelve guests with loose furniture around it. This area is well-covered and protected from wind and weather. The aft section of the boat deck is the area for the tenders, which when removed creates a deck area for large comfortable lounge furniture, and is ideally suited for large parties. A staircase on the port side aft leads down to the Main Aft Deck.

## Aft Deck

This area has a five-place bench settee, together with a beautiful oval teak table and chairs, comfortably seating eight guests.

A stairwell on both port and starboard side on the aft deck takes you down to the large integral swim platform, giving easy access to the water. In addition, there is a watertight door into the lazarette and engine room.

## Main Salon

Moving forward from the aft deck through sliding glass doors leads to the light and airy **Main Salon** which has an L-shaped seating area to port with an additional seating area further aft to starboard. Located forward to port in the Main Salon is a dry bar, which offers a wine and champagne fridge. There is ample seating aft of the Main Salon and an entertainment centre which consists of a Sharp Flat Screen TV, 1 Philips Blue Ray DVD player, 1 BG Pro Karaoke Machine, 1 Panasonic telephone, Sat TV, Denon Amplifier and I-Pod connection.

## Dining

Forward of the Main Salon is the **Dining Salon**, which is slightly offset to port.

The Dining area can be closed off from the Salon and Foyer. Continuing past the Dining Room in the Main Salon is the main deck foyer.

Off this Foyer is the main deck Day Head/Powder Room.



---

## Galley

Forward of the Dining Salon is the very well-equipped, spacious L-shaped Galley completely refitted in 2011 consists of:

- 1 5-Ring Miele Ceran hob
- 1 Miele extractor
- 1 Miele Oven
- 1 Miele steam oven
- 1 Double Miele freezer + ice distributor
- 1 Double Miele fridge
- 1 Hoshizaki icemaker
- 1 Double stainless steel sink with mixer tap
- 1 Single sink with insinkerator
- 2 Water purifiers, one for each sink
- 1 Broan Elite trash compactor
- 1 Cuisineart food mixer
- 1 Tiger rice maker
- 1 Cuisineart 4 slice bread toaster
- 1 Delonghi toaster
- 1 Miele Nespresso machine
- 1 Panasonic telephone

## Accommodation

**BRAVEHEART** provides accommodation for twelve owners and guests in six double ensuite staterooms. She sleeps a maximum of eleven crew in four double cabins, a queen sized Captain's Cabin and a double Engineers Cabin.

## Master Stateroom

Forward on the main deck is the **Master Stateroom** with a king-size bed aft. Forward is a full width walk-in closet. A vanity desk and a C-shaped settee are to starboard. The entertainment system and equipment in this stateroom includes:

1 Samsung Flat Screen TV

1 Ipod stand

1 Astro DV3 terminal

1 Marantz amplifier

1 Philips DVD Blue Ray

1 Amx control unit

1 Panasonic telephone

1 Uline fridge

**The Master Bathroom** is aft with separate shower, American Standard toilet and bidet in a cubicle, his and her sink and a circular Jacuzzi. Access from the Master Stateroom, leads down to the lower deck's fully equipped Gym/Store Room.

## Gym/Store Room

Located on the lower deck, with access from the Owner's Bathroom and to the Crew area, is a large space which was previously a well equipped gym. This area is now used for storage but could easily be reconfigured as a gym. The sauna has been converted into storage with refrigerators, freezers and a wine fridge.

### **Crew Accommodation / Laundry On Lower Deck**

The two forward cabins each consist of upper and lower berths and ensuite bathroom and shower. Further aft are two more cabins, each with upper and lower berths, an inboard desk and ensuite bathroom and shower. All crew cabins have a 14" flat screen television and DVD/CD player.

Aft of the crew cabins is the **Crew Galley/Mess** which is equipped with a full height WHIRLPOOL refrigerator/freezer, Sharp carousel microwave oven, Bosch dishwasher and a second full height Bosch refrigerator. The mess is also equipped with a Sony 19" TV, DVD/CD and Sat-TV.

**The Laundry Room** is on the sub deck and equipped with 2 Miele washing machines and 3 Miele dryers and a Miele rolling iron.

### **Guest Staterooms**

Four equal **Guest Staterooms** situated amidships with athwart ship queen berths, and the ensuite bathrooms have stall showers and toilets in separate cubicles. Each cabin has a safe deposit box, torch and fire extinguisher.

### **Entertainment Equipment Fitted in Each Guest Cabin**

- 4094 SeaTel satellite TV throughout
- Samsung TV
- Sony stereo system
- Panasonic telephone
- DV3 Sat TV receiver
- Astro DV3 terminal
- DR Sat Thai
- Philips Blue Ray DVD player
- Denon Amplifier

### **Engineer's Accommodation on the Lower Deck**

The **Engineer's Office/Control room** and the Engineer's accommodation are aft of guest areas. The Engine Room is further aft. A separate generator room is aft to port. All the way aft is the Lazarette housing the Kamewa drives, control system and engine room spare parts storage.

### **Electrical System**

- (2) 145 kw Northern Lights 3-phase (mounted in the sound isolated generator room)

New Sept 2011

Shore power:

- 480v, 150 amp input splits to 208v AC, 300 amps
- Atlas shore power converter fitted
- Main switchboard is in engine room with five load panels. Batteries are installed in the

engine room and in the lazarette. Emergency Radio Batteries are on flybridge.

## Navigation, Communication & Electronics Equipment

- SAAAB AIS/GPS Positioning System
- (2) Furuno Nav/Trac GPS
- Transas Navi-Sailor 3000 Electronic Chart System
- Kelvin Hughes Nucleus-2 5000 Radar
- Furuno FR-7062 Radar
- Robertson AP9-MK3 Autopilot
- Anschutz Gyro Compass
- Furuno colour Nav Net Seemap fishfinder, depth sounder
- B & G Wind Speed Indicator
- Classes & Plath Magnetic Compass
- Standard Horizon quantum GX 5000 S
- Furuno Satellite Compass
- SeaTel 4004 Sat TV system, which provides world-wide Sat TV
- Cruise IP-Broadband At Sea System, which includes two phone lines and provides constant internet connection via satellite
- Sat-com B,C and Mini M
- Multi-zone GSM line (Europe and US)
- Sailor Thrane + Thrane HF/MF DSC + Voice + Telex
- Shipmate – Navtext RS6101
- (2) ICOM Hand-Held VHF
- (13) ICOM Hand-Held VHF

- (2) GMDSS Hand-Held Emergency VHP
- Standard VHF STR 8400
- Panasonic XDP Telephone System
- Servo watch monitoring systems monitoring all tanks, engines and generators
- (2) HP Printers
- (Sony Desktop Computer
- Lenova Computer Network
- Searchlight control x 2
- 2 Spot lights

## **Engine & Mechanical Equipment**

- New KaMeWa Touch Screens + Canman remote control with bow thruster
- (2) MTU 12V396TB93 main engines, 1960hp each driving KaMeWa model 90S62-6 water jet propulsion systems W6 overhaul in Nov. 2011.
- 5.5 stainless steel propeller shaft
- Z.F. BU457 4.294:1 reduction gears serviced 2011
- Naiad stabilizers
- Holland Roer bow thruster
- Sabre York air conditioning system
- Westfalia fuel filtration systems
- Helisep bilge water filtration oily water separator
- 70 gph @ 1400 rpm with 2 gens, 100 gph @1750 rpm with 2 generators
- (2) Water makers Inc. reverse osmosis water makers (3000 gpd each)
- Haman Water Technik waste treatment

- Grundfos fresh water system
- KaMeWa steering system
- KaMeWa backup emergency steering

## **Safety Equipment**

- (4) RFD 12-man life rafts
- (4) Life rings
- Fixed fire system FM 200 Engine Room, Generator Room and Galley
- Sea water fire fighting stations
- (5) Security cameras and (2) monitors
- EPIRB
- (25) Fire extinguishers
- (2) Sart
- MCA medical first aid equipment and supplies
- (2) Immersion suits

## **Deck and Hull**

- (2) Danforth type anchors
- Anchor windlass system
- (2) Deck capstans
- (2) Cranes on boat deck
- Stern boarding gangway

- Main tender with davits
- Accommodation ladders

## Tenders & Toys

- 22' Wide body Nautica with 225 hp Yamaha outboard
- 14' Semi rigid inflatable with 60 hp Yamaha outboard
- (2) Yamaha FX LT 1200 wave runners
- (2) sets of water-skis
- (8) dive tanks with assorted gear

## Construction

The hull and superstructure were built in accordance to Det Norske Veritas steel hull with aluminum superstructure and teak decks.

## CONCLUSION

**BRAVEHEART** has been maintained regardless of cost. Complete W6 overhaul to her main engines and renewed both generators Sept 2011. New teak deck fitted and top sides repainted in 2010/11. She has a beautiful on deck master cabin and 4 equal sized double guest cabins below deck. Her galley was completely refitted with new equipment in 2010/11. Previously a top charter yacht, **BRAVEHEART** has timeless lines and an ideal choice for anyone seeking a tri deck yacht.



---

Cruising South East Asia, call to arrange an inspection. Well priced at USD12.5M.

## Исключения

---

При продаже яхты исключаются личные вещи владельца.

## Отказ от ответственности

---

Компания предоставляет описание судна или яхты добросовестно, но не может гарантировать точность этой информации, а также не ручается за техническое состояние. Покупатель должен проинструктировать своих агентов или оценщиков исследовать представленную информацию более подробно, по собственному желанию. Продажа судна или яхты, изменение цены или снятие с продажи будет происходить без предварительного уведомления.

# ФОТОГРАФИИ

**Top Deck**



**Aft Deck**



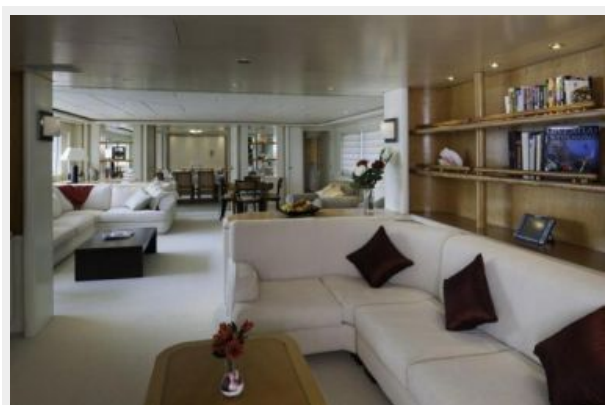
**Boat Deck**



**Alfresco Dining**



**Salon**



**Dining**



### Owners Cabin



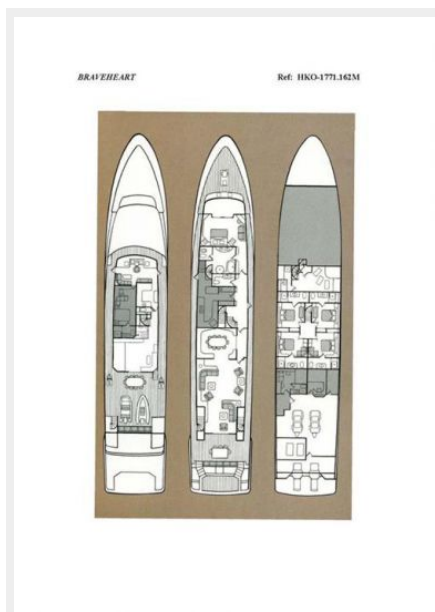
### Bathroom



### Galley



### Guest Cabin



# КОНТАКТЫ

Андрей Шестаков (Andrey Shestakov) – ведущий яхтенный брокер отдела продаж яхт и судов компании Shestakov Yacht Sales Inc. Официальный представитель Shestakov Yacht Sales Inc. для русскоговорящих клиентов в центральном офисе компании в Майами/Форт Лодердейл/Флорида/США.

## Контактная информация

Email: [andrey@shestakovyachtsales.com](mailto:andrey@shestakovyachtsales.com)

Web: [shestakovyachtsales.com](http://shestakovyachtsales.com)

## Телефоны

Краснодарский край: **+7(918)465-66-44**

США, Майами, Флорида: **+1(954)274-4435**

## Время работы

Понедельник – Суббота: **9:00 - 21:00**  
EDT

Воскресенье: **Закрето**

## Адрес



Harbour Towne Marina, 850 NE 3rd St,  
STE 213, Dania, FL 33004